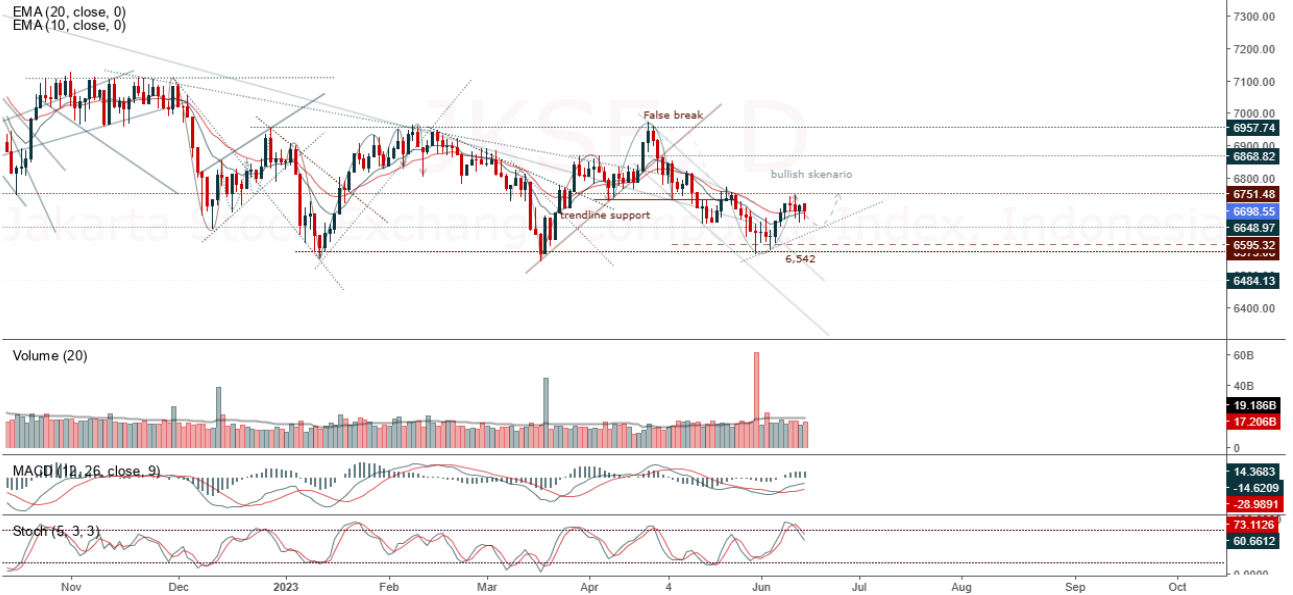


JCI Range Today 6,660 – 6,669 (Support), 6,726 – 6,744 (Resistance)

Jakarta Stock Exchange Composite Index, Indonesia, Jakarta:JKSE, D



JCI closed lower with a bearish candle. Stochastic indicator is bearish, MACD histogram is moving positive (line is bullish) and volume is slightly down. If it moves bearish again, JCI is expected to weaken again to the support range of 6,660 – 6,669. If JCI is able to move bullish, there is a chance for JCI to go to the resistance at the range of 6,726 – 6,744.

AALI

Astra Agro Lestari Tbk, Indonesia, Jakarta:AALI, D

EMA (13, close, 0)
EMA (34, close, 0)



(AALI) The price closed higher with a bullish candle. The price has the opportunity to strengthen to the nearest resistance. Stochastic indicator is bullish, MACD histogram is moving positive (bullish line) and volume is increasing. Confirmation to buy if the next candle is bullish again or buy on support if it goes down first. We suggest being careful if it fails to stay above the support level. **(Trading Buy)**

TRADING STRATEGY:

1. Target Price: The price has a bullish opportunity to test the resistance level 7,700. If it breaks level 7,700 then the price will go to level 7,825. We recommend to be careful if the price fails to break through or turn around the support area.

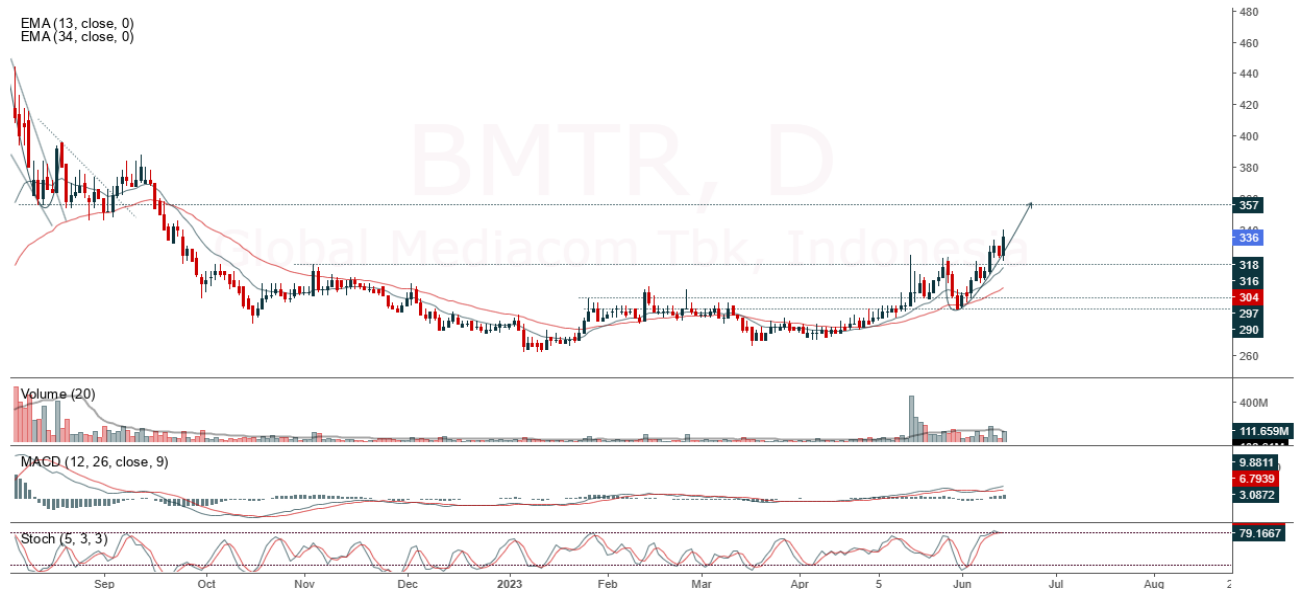
2. Stop Loss: To minimize the risk of loss, we recommend placing a stop loss at level 7,375.

Entry Buy : 7,475 – 7,575
Target Price : 7,700 – 7,825
Support : 7,400 – 7,475
Cutloss : 7,375

BMTR

Global Mediacom Tbk, Indonesia, Jakarta:BMTR, D

EMA (13, close, 0)
EMA (34, close, 0)



(BMTR) The price closed higher and returned to bullish. The price has the opportunity to strengthen again to the next resistance. Stochastic indicator is bullish, MACD histogram is moving positive again (golden cross line) and volume is increasing. Confirmation to buy if the next candle is bullish again or buy on support if it goes down first. We suggest being careful if it fails to stay above the support level. **(Trading Buy)**

TRADING STRATEGY:

1. Target Price: The price has a bullish opportunity to test the resistance level 346. If it breaks level 346 then the price will go to level 354. We recommend to be careful if the price fails to break through or turn around the support area.

2. Stop Loss: To minimize the risk of loss, we recommend placing a stop loss at level 324.

Entry Buy : 330 – 336
Target Price : 346 – 354
Support : 326 – 330
Cutloss : 324

CPIN

Charoen Pokphand Indonesia TBK PT, Indonesia, Jakarta:CPIN, D

EMA (13, close, 0)
EMA (34, close, 0)



(CPIN) The price closed higher and breakout to the closest resistance. The price has the opportunity to strengthen again to the nearest resistance. Stochastic indicator is bullish, MACD histogram is moving positive (bullish line) and volume is increasing. Confirmation to buy if the next candle is bullish again or buy on support if it goes down first. We suggest being careful if it fails to stay above the support level. **(Trading Buy)**

TRADING STRATEGY:

1. Target Price: The price has a bullish opportunity to test the resistance level 5,300. If it breaks level 5,300 then the price will go to level 5,375. We recommend to be careful if the price fails to break through or turn around the support area.

2. Stop Loss: To minimize the risk of loss, we recommend placing a stop loss at level 5,050.

Entry Buy : 5,125 – 5,200
Target Price : 5,300 – 5,375
Support : 5,075 – 5,125
Cutloss : 5,050

SCMA

Surya Citra Media Tbk, Indonesia, Jakarta:SCMA, W



(SCMA) The price closed higher and rallied again. The price has the opportunity to strengthen again to the nearest resistance. Stochastic indicator is bullish, MACD histogram is moving positive (bullish line) and volume is increasing. Confirmation to buy if the next candle is bullish again or buy on support if it goes down first. We suggest being careful if it fails to stay above the support level. **(Trading Buy)**

TRADING STRATEGY:

1. Target Price: The price has a bullish opportunity to test the resistance level 164. If it breaks level 164 then the price will go to level 168. We recommend to be careful if the price fails to break through or turn around the support area.
2. Stop Loss: To minimize the risk of loss, we recommend placing a stop loss at level 153.

Entry Buy : 157 – 160
 Target Price : 164 – 168
 Support : 154 – 157
 Cutloss : 153

Forecast – Technical Analysis

Ticker	MA5	RSI Rec	MACD Trend	Recomm.	Pivot Point	Support		Resistance		Stop Loss Level
						1	2	1	2	
JCI	Negatif	Trading	Positif	Hold	6,700	6,675	6,650	6,750	6,750	6,550
ACES	Positif	Trading	Negatif	Hold	660	645	635	670	685	625
ADRO	Negatif	Trading	Positif	Hold	2,330	2,310	2,280	2,360	2,380	2,245
AKRA	Negatif	Trading	Positif	Hold	1,465	1,435	1,420	1,480	1,510	1,400
AMRT	Positif	Oversold	Negatif	Spec. Buy	2,605	2,555	2,485	2,675	2,725	2,445
ANTM	Negatif	Trading	Positif	Hold	2,050	2,040	2,010	2,080	2,090	1,980
ARTO	Positif	OverBought	Positif	Hold	2,945	2,880	2,855	2,970	3,035	2,810
ASII	Negatif	OverBought	Positif	Sell	6,850	6,800	6,750	6,900	6,950	6,625
BBCA	Positif	Trading	Negatif	Hold	9,050	9,025	8,925	9,150	9,175	8,800
BBNI	Positif	Trading	Positif	Spec. Buy	9,025	9,000	8,900	9,125	9,150	8,775
BBRI	Negatif	Trading	Negatif	Sell	5,500	5,450	5,350	5,600	5,650	5,275
BBTN	Positif	Trading	Negatif	Hold	1,275	1,275	1,260	1,290	1,290	1,240
BMRI	Positif	Trading	Positif	Spec. Buy	5,125	5,100	5,050	5,175	5,200	4,975
BRIS	Positif	Trading	Negatif	Hold	1,675	1,665	1,645	1,695	1,705	1,620
BRPT	Negatif	Trading	Positif	Hold	765	745	735	775	795	720
BUKA	Positif	Trading	Positif	Spec. Buy	224	215	208	231	240	204
CPIN	Negatif	Trading	Positif	Hold	5,175	5,075	5,025	5,225	5,325	4,935
EMTK	Negatif	Trading	Positif	Hold	725	685	635	775	815	625
ESSA	Negatif	Trading	Positif	Hold	640	630	615	655	665	605
EXCL	Positif	Trading	Positif	Spec. Buy	2,035	2,000	1,985	2,050	2,085	1,955
GOTO	Positif	Trading	Negatif	Hold	117	116	115	118	119	113
HRUM	Negatif	Trading	Positif	Hold	1,460	1,445	1,420	1,485	1,500	1,400
ICBP	Positif	OverBought	Negatif	Sell	11,275	11,150	11,075	11,350	11,475	10,900
INCO	Negatif	Trading	Positif	Hold	6,600	6,575	6,475	6,700	6,725	6,375
INDF	Positif	OverBought	Positif	Hold	7,375	7,250	7,175	7,450	7,575	7,050
INDY	Negatif	Trading	Positif	Hold	2,010	1,975	1,945	2,040	2,075	1,915
INKP	Negatif	OverBought	Positif	Sell	7,925	7,775	7,600	8,100	8,250	7,500
INTP	Negatif	Trading	Positif	Hold	9,825	9,750	9,675	9,900	9,975	9,525
ITMG	Negatif	Oversold	Positif	Spec. Buy	24,400	24,025	23,650	24,775	25,150	23,300
JPFA	Negatif	Trading	Positif	Hold	1,240	1,230	1,220	1,250	1,260	1,200
KLBF	Negatif	Trading	Positif	Hold	2,080	2,055	2,020	2,115	2,140	1,985
MDKA	Positif	Oversold	Positif	Buy	3,040	3,010	2,970	3,080	3,110	2,925
MEDC	Positif	Trading	Positif	Spec. Buy	910	900	885	925	935	870
PGAS	Positif	Oversold	Negatif	Spec. Buy	1,320	1,295	1,285	1,330	1,355	1,265
PTBA	Negatif	OverBought	Positif	Sell	3,925	3,790	3,685	4,030	4,165	3,630
SCMA	Negatif	Trading	Positif	Hold	159	154	150	163	168	147
SIDO	Positif	Trading	Positif	Spec. Buy	740	730	715	755	765	705
SMGR	Negatif	Trading	Positif	Hold	6,050	5,975	5,925	6,100	6,175	5,825
SRTG	Negatif	Trading	Positif	Hold	1,705	1,670	1,645	1,730	1,765	1,620
TBIG	Positif	Trading	Negatif	Hold	2,065	2,025	1,995	2,095	2,135	1,965
TINS	Negatif	Trading	Positif	Hold	980	975	965	990	995	950
TLKM	Positif	Trading	Negatif	Hold	3,995	3,960	3,925	4,030	4,065	3,865
TOWR	Negatif	Trading	Positif	Hold	1,020	1,005	990	1,035	1,050	975
TPIA	Negatif	Trading	Positif	Hold	2,085	2,060	2,045	2,100	2,125	2,015
UNTR	Negatif	Trading	Positif	Hold	23,175	22,800	22,525	23,450	23,825	22,175
UNVR	Positif	Trading	Negatif	Hold	4,445	4,390	4,335	4,500	4,555	4,270

OUR TEAM

Sukarno Alatas

Head of Equity Research

sukarno@kiwoom.co.id | 021 5010 5800**Michelle Abadi**

Associate

michelle@kiwoom.co.id | 021 5010 5800**Abdul Azis Setyo Wibowo**

Equity Research Analyst

azis@kiwoom.co.id | 021 5010 5800**OTHER DISCLOSURES**

All Kiwoom's research reports made available to clients are simultaneously available on our own website <http://www.kiwoom.co.id/>. Not all research content is redistributed, e-mailed or made available to third-party aggregators. For all research reports available on a particular stock, please contact your sales representative. Any data discrepancies in this report could be the result of different calculations and/or adjustments.

DISCLAIMER This report has been prepared and issued by PT Kiwoom Sekuritas Indonesia. Information has been obtained from sources believed to be reliable but Kiwoom Securities do not warrant its completeness or accuracy. Forward-looking information or statements in this report contain information that is based on forecast of future results, estimates of amounts not yet determinable, assumptions, and therefore involve known and unknown risks and uncertainties which may cause the actual results, performance or achievements of their subject matter to be materially different from current expectations.

To the fullest extent allowed by law, PT Kiwoom Sekuritas Indonesia shall not be liable for any direct, indirect or consequential losses, loss of profits, damages, costs or expenses incurred or suffered by any person or organization arising from reliance on or use of any information contained on this report. The information that we provide should not be construed in any manner whatsoever as, personalized advice.

No mention of a particular security in this report constitutes a recommendation to buy, sell or hold that or any security, or that any particular security, portfolio of securities, transaction or investment strategy is suitable for any specific person. This report is being supplied to you solely for your information and may not be reproduced by, further distributed to or published in whole or in part by, any other person.