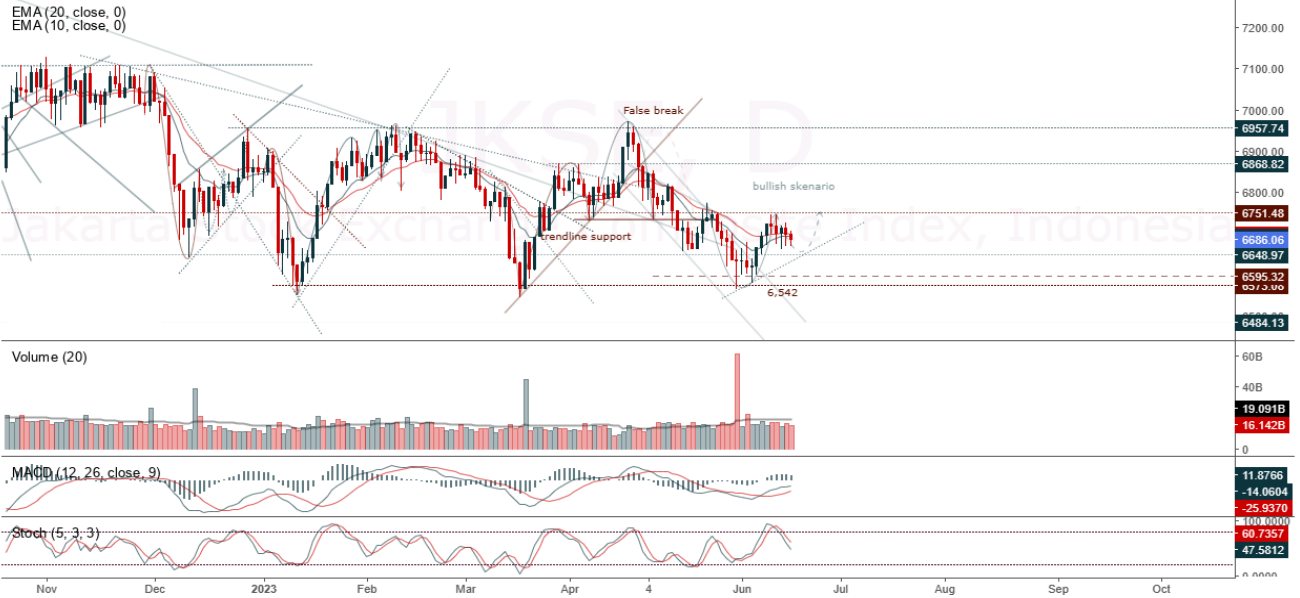


**JCI Range Today 6,648 – 6,660 (Support), 6,717 – 6,726 (Resistance)**

Jakarta Stock Exchange Composite Index, Indonesia, Jakarta:JKSE, D



JCI closed lower with a bearish candle. Stochastic indicator is bearish, MACD histogram is moving positive (line is Bullish) and volume is increasing. If it moves bearish again, JCI is expected to weaken again to the support range of 6,648 – 6,660. If JCI is able to move bullish, there is a chance for JCI to go to the resistance at the range of 6,717 – 6,726.

**ASII**

Astra International Tbk, Indonesia, Jakarta:ASII, D

EMA (13, close, 0)  
EMA (34, close, 0)



**(ASII)** The price closed higher with a bullish candle. The price has the opportunity to strengthen to the nearest resistance. Stochastic indicator is bullish, MACD histogram is moving positive (bullish line) and volume is neutral. Confirmation to buy if the next candle is bullish again or buy on support if it goes down first. We suggest being careful if it fails to stay above the support level. **(Trading Buy)**

**TRADING STRATEGY:**

1. Target Price: The price has a bullish opportunity to test the resistance level 7,000. If it breaks level 7,000 then the price will go to level 7,075. We recommend to be careful if the price fails to break through or turn around the support area.

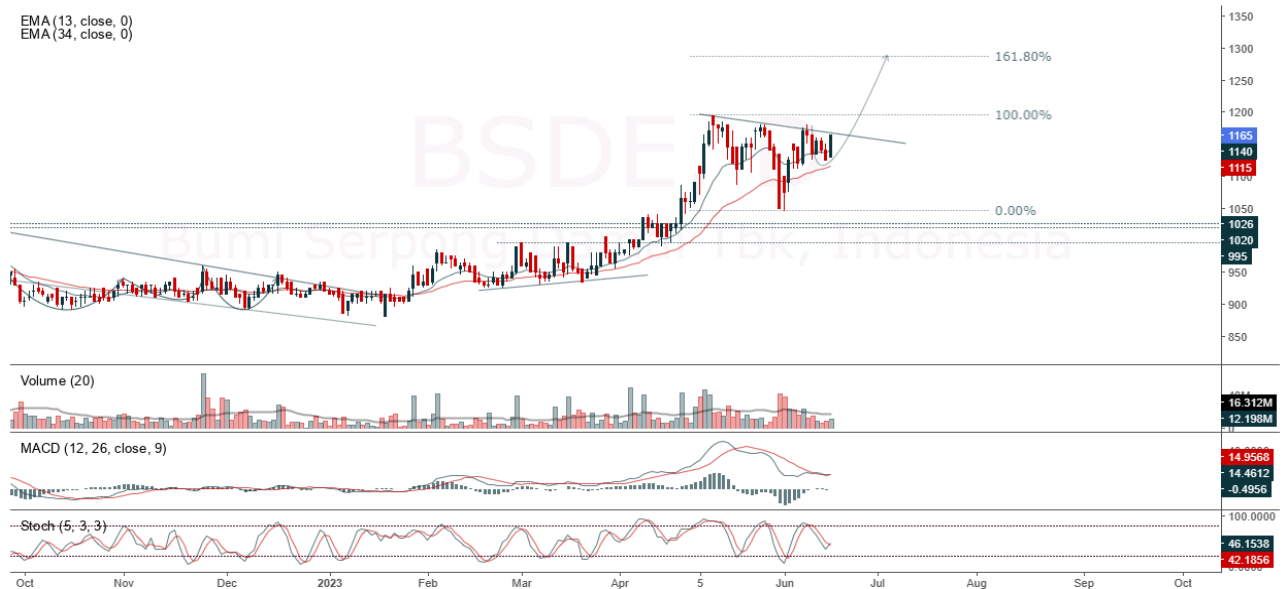
2. Stop Loss: To minimize the risk of loss, we recommend placing a stop loss at level 6,725.

Entry Buy : 6,775 – 6,875  
Target Price : 7,000 – 7,075  
Support : 6,750 – 6,775  
Cutloss : 6,725

**BSDE**

Bumi Serpong Damai Tbk, Indonesia, Jakarta:BSDE, D

EMA (13, close, 0)  
EMA (34, close, 0)



**(BSDE)** The price closed higher and returned to bullish. The price has the opportunity to strengthen again to the nearest resistance. Stochastic indicator is bullish, MACD histogram is moving positive again (potential for golden cross line) and volume is increasing. Confirmation to buy if the next candle is bullish again or buy on support if it goes down first. We suggest being careful if it fails to stay above the support level. **(Trading Buy)**

**TRADING STRATEGY:**

1. Target Price: The price has a bullish opportunity to test the resistance level 1,195. If it breaks level 1,195 then the price will go to level 1,205. We recommend to be careful if the price fails to break through or turn around the support area.

2. Stop Loss: To minimize the risk of loss, we recommend placing a stop loss at level 1,125.

Entry Buy : 1,150 – 1,165  
Target Price : 1,195 – 1,205  
Support : 1,130 – 1,150  
Cutloss : 1,125

**TBIG**

Tower Bersama Infrastructure Tbk PT, Indonesia, Jakarta:TBIG, D



**(TBIG)** The price closed higher and formed a swing low. The price has the opportunity to strengthen again to the nearest resistance. Stochastic indicator is bullish, MACD histogram is moving positive (sloping line) and volume is neutral. Confirmation to buy if the next candle is bullish again or buy on support if it goes down first. We suggest being careful if it fails to stay above the support level. **(Trading Buy)**

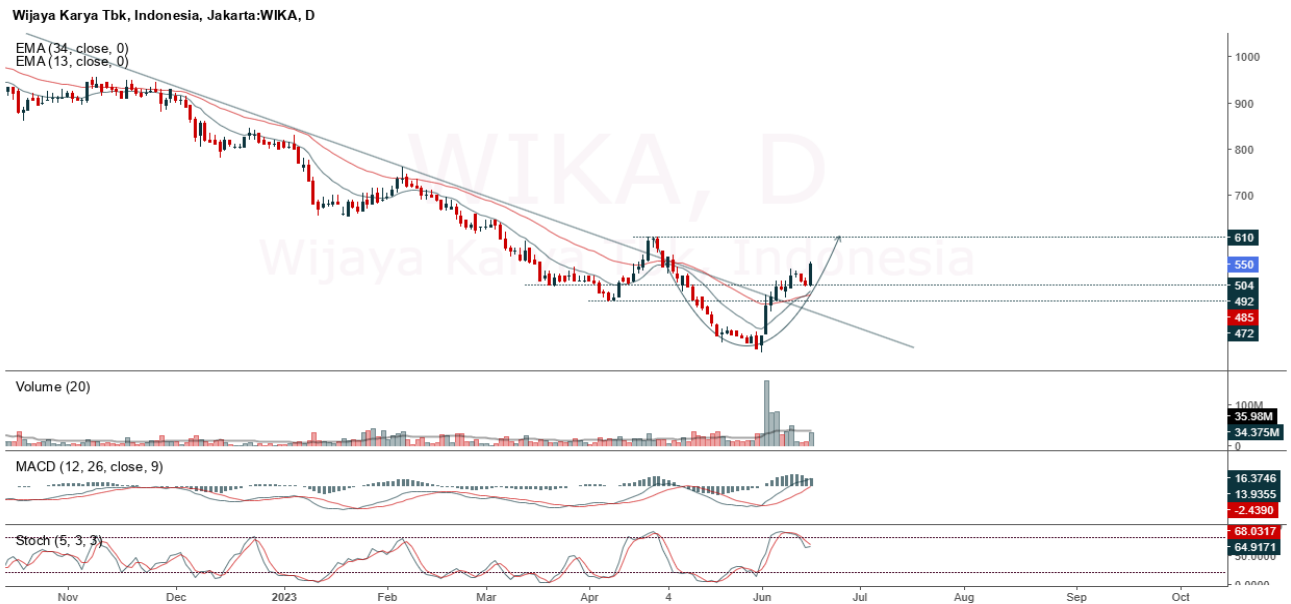
**TRADING STRATEGY:**

1. Target Price: The price has a bullish opportunity to test the resistance level 2,160. If it breaks level 2,160 then the price will go to level 2,180. We recommend to be careful if the price fails to break through or turn around the support area.

2. Stop Loss: To minimize the risk of loss, we recommend placing a stop loss at level 2,050.

Entry Buy : 2,080 – 2,110  
 Target Price : 2,160 – 2,180  
 Support : 2,060 – 2,080  
 Cutloss : 2,050

**WIKA**



**(WIKA)** The price closed higher and broke out from the resistance. The price has the opportunity to strengthen again to the next resistance. Stochastic indicator is bullish, MACD histogram is moving positive (bullish line) and volume is increasing. Confirmation to buy if the next candle is bullish again or buy on support if it goes down first. We suggest being careful if it fails to stay above the support level. **(Trading Buy)**

**TRADING STRATEGY:**

- 1.Target Price: The price has a bullish opportunity to test the resistance level 585. If it breaks level 585 then the price will go to level 600. We recommend to be careful if the price fails to break through or turn around the support area.
2. Stop Loss: To minimize the risk of loss, we recommend placing a stop loss at level 525.

Entry Buy : 540 – 550  
 Target Price : 585 – 600  
 Support : 530 – 540  
 Cutloss : 525

**Forecast – Technical Analysis**

Ticker	MA5	RSI Rec	MACD Trend	Recomm.	Pivot Point	Support		Resistance		Stop Loss Level
						1	2	1	2	
JCI	Positif	Trading	Positif	Spec. Buy	6,675	6,675	6,650	6,700	6,725	6,550
ACES	Positif	Trading	Negatif	Hold	645	630	615	660	675	605
ADRO	Negatif	Trading	Positif	Hold	2,280	2,255	2,230	2,305	2,330	2,195
AKRA	Negatif	Trading	Positif	Hold	1,445	1,435	1,420	1,460	1,470	1,395
AMRT	Positif	Oversold	Negatif	Spec. Buy	2,600	2,565	2,550	2,615	2,650	2,510
ANTM	Negatif	Trading	Positif	Hold	2,045	2,025	2,005	2,065	2,085	1,970
ARTO	Positif	OverBought	Positif	Hold	2,965	2,890	2,825	3,030	3,105	2,785
ASII	Negatif	OverBought	Positif	Sell	6,825	6,800	6,725	6,900	6,925	6,625
BBCA	Positif	Trading	Negatif	Hold	9,025	8,975	8,975	9,025	9,075	8,825
BBNI	Positif	Trading	Positif	Spec. Buy	9,025	9,000	8,925	9,100	9,125	8,775
BBRI	Negatif	Trading	Negatif	Sell	5,500	5,475	5,425	5,550	5,575	5,350
BBTN	Positif	Trading	Negatif	Hold	1,290	1,275	1,255	1,310	1,325	1,235
BMRI	Negatif	Trading	Positif	Hold	5,125	5,100	5,075	5,150	5,175	4,995
BRIS	Positif	Trading	Negatif	Hold	1,665	1,650	1,640	1,675	1,690	1,615
BRPT	Negatif	Trading	Positif	Hold	775	765	750	790	800	740
BUKA	Negatif	Trading	Positif	Hold	223	218	213	228	233	210
CPIN	Negatif	OverBought	Positif	Sell	5,200	5,150	5,100	5,250	5,300	5,000
EMTK	Negatif	OverBought	Positif	Sell	765	740	715	790	815	705
ESSA	Negatif	Trading	Positif	Hold	640	635	620	655	660	610
EXCL	Positif	Trading	Negatif	Hold	2,005	1,950	1,905	2,050	2,105	1,875
GOTO	Positif	Trading	Negatif	Hold	118	117	116	119	120	114
HRUM	Positif	Trading	Positif	Spec. Buy	1,440	1,415	1,380	1,475	1,500	1,355
ICBP	Positif	Trading	Negatif	Hold	11,225	11,200	11,150	11,275	11,300	11,000
INCO	Negatif	Trading	Positif	Hold	6,525	6,450	6,425	6,550	6,625	6,325
INDF	Positif	OverBought	Negatif	Sell	7,350	7,275	7,225	7,400	7,475	7,100
INDY	Negatif	Trading	Positif	Hold	1,950	1,930	1,900	1,980	2,000	1,870
INKP	Negatif	OverBought	Positif	Sell	8,100	7,975	7,875	8,200	8,325	7,750
INTP	Negatif	Trading	Positif	Hold	9,850	9,800	9,725	9,925	9,975	9,575
ITMG	Negatif	Oversold	Positif	Spec. Buy	23,975	23,725	23,400	24,300	24,550	23,050
JPFA	Positif	Trading	Positif	Spec. Buy	1,235	1,230	1,220	1,245	1,250	1,200
KLBF	Negatif	Trading	Positif	Hold	2,065	2,050	2,035	2,080	2,095	2,005
MDKA	Positif	Oversold	Positif	Buy	3,035	3,020	2,995	3,060	3,075	2,950
MEDC	Negatif	Trading	Positif	Hold	910	905	895	920	925	880
PGAS	Positif	Oversold	Negatif	Spec. Buy	1,315	1,310	1,305	1,320	1,325	1,285
PTBA	Negatif	OverBought	Positif	Sell	3,815	3,755	3,715	3,855	3,915	3,655
SCMA	Negatif	Trading	Positif	Hold	163	159	156	166	170	153
SIDO	Positif	Oversold	Positif	Buy	730	725	710	745	750	700
SMGR	Positif	Trading	Positif	Spec. Buy	6,025	5,950	5,875	6,100	6,175	5,775
SRTG	Negatif	Trading	Positif	Hold	1,705	1,685	1,665	1,725	1,745	1,640
TBIG	Positif	Trading	Negatif	Hold	2,080	2,035	2,000	2,115	2,160	1,970
TINS	Positif	Trading	Positif	Spec. Buy	970	960	940	990	1,000	925
TLKM	Positif	Oversold	Negatif	Spec. Buy	3,965	3,940	3,925	3,980	4,005	3,865
TOWR	Negatif	Trading	Positif	Hold	1,015	1,010	995	1,030	1,035	980
TPIA	Negatif	Trading	Positif	Hold	2,085	2,055	2,045	2,095	2,125	2,010
UNTR	Positif	Trading	Positif	Spec. Buy	23,000	22,850	22,575	23,275	23,425	22,225
UNVR	Positif	Trading	Negatif	Hold	4,380	4,335	4,280	4,435	4,480	4,215

## OUR TEAM

**Sukarno Alatas**

Head of Equity Research

[sukarno@kiwoom.co.id](mailto:sukarno@kiwoom.co.id) | 021 5010 5800**Michelle Abadi**

Associate

[michelle@kiwoom.co.id](mailto:michelle@kiwoom.co.id) | 021 5010 5800**Abdul Azis Setyo Wibowo**

Equity Research Analyst

[azis@kiwoom.co.id](mailto:azis@kiwoom.co.id) | 021 5010 5800**OTHER DISCLOSURES**

All Kiwoom's research reports made available to clients are simultaneously available on our own website <http://www.kiwoom.co.id/>. Not all research content is redistributed, e-mailed or made available to third-party aggregators. For all research reports available on a particular stock, please contact your sales representative. Any data discrepancies in this report could be the result of different calculations and/or adjustments.

**DISCLAIMER** This report has been prepared and issued by PT Kiwoom Sekuritas Indonesia. Information has been obtained from sources believed to be reliable but Kiwoom Securities do not warrant its completeness or accuracy. Forward-looking information or statements in this report contain information that is based on forecast of future results, estimates of amounts not yet determinable, assumptions, and therefore involve known and unknown risks and uncertainties which may cause the actual results, performance or achievements of their subject matter to be materially different from current expectations.

To the fullest extent allowed by law, PT Kiwoom Sekuritas Indonesia shall not be liable for any direct, indirect or consequential losses, loss of profits, damages, costs or expenses incurred or suffered by any person or organization arising from reliance on or use of any information contained on this report. The information that we provide should not be construed in any manner whatsoever as, personalized advice.

No mention of a particular security in this report constitutes a recommendation to buy, sell or hold that or any security, or that any particular security, portfolio of securities, transaction or investment strategy is suitable for any specific person. This report is being supplied to you solely for your information and may not be reproduced by, further distributed to or published in whole or in part by, any other person.