

JCI Range Today 6,648 – 6,660 (Support), 6,744 – 6,755 (Resistance)

Jakarta Stock Exchange Composite Index, Indonesia, Jakarta:JKSE, D

EMA (20, close, 0)
EMA (10, close, 0)



JCI managed to close higher and formed a swing low. Stochastic golden cross indicator, MACD histogram is moving positive (bullish line) and volume is neutral. If it moves bearish again, JCI is expected to weaken again to the support range of 6,648 – 6,660. If JCI is able to move bullish, there is a chance for JCI to go to the resistance at the range of 6,744 – 6,755.

ASII

Astra International Tbk, Indonesia, Jakarta:ASII, D

EMA (13, close, 0)
EMA (34, close, 0)



(ASII) The price closed higher with a bullish candle. The price has the opportunity to strengthen to the nearest resistance. The stochastic indicator has a potential golden cross, MACD histogram is moving in the positive direction (bullish line) and volume is increasing. Confirmation to buy if the next candle is bullish again or buy on support if it goes down first. We suggest being careful if it fails to stay above the support level. **(Trading Buy)**

TRADING STRATEGY:

1. Target Price: The price has a bullish opportunity to test the resistance level 7,000. If it breaks level 7,000 then the price will go to level 7,100. We recommend to be careful if the price fails to break through or turn around the support area.

2. Stop Loss: To minimize the risk of loss, we recommend placing a stop loss at level 6,750.

Entry Buy : 6,850 – 6,925
Target Price : 7,000 – 7,100
Support : 6,775 – 6,850
Cutloss : 6,750

BBTN

Bank Tabungan Negara Persero, Indonesia, Jakarta:BBTN, D



(BBTN) The price closed higher and broke out from the resistance. The price has the opportunity to breakout again and head for the next resistance. Stochastic indicator is bullish, MACD histogram is moving positive again (bullish line) and volume is increasing. Confirmation to buy if the next candle is bullish again or buy on support if it goes down first. We suggest being careful if it fails to stay above the support level. **(Trading Buy)**

TRADING STRATEGY:

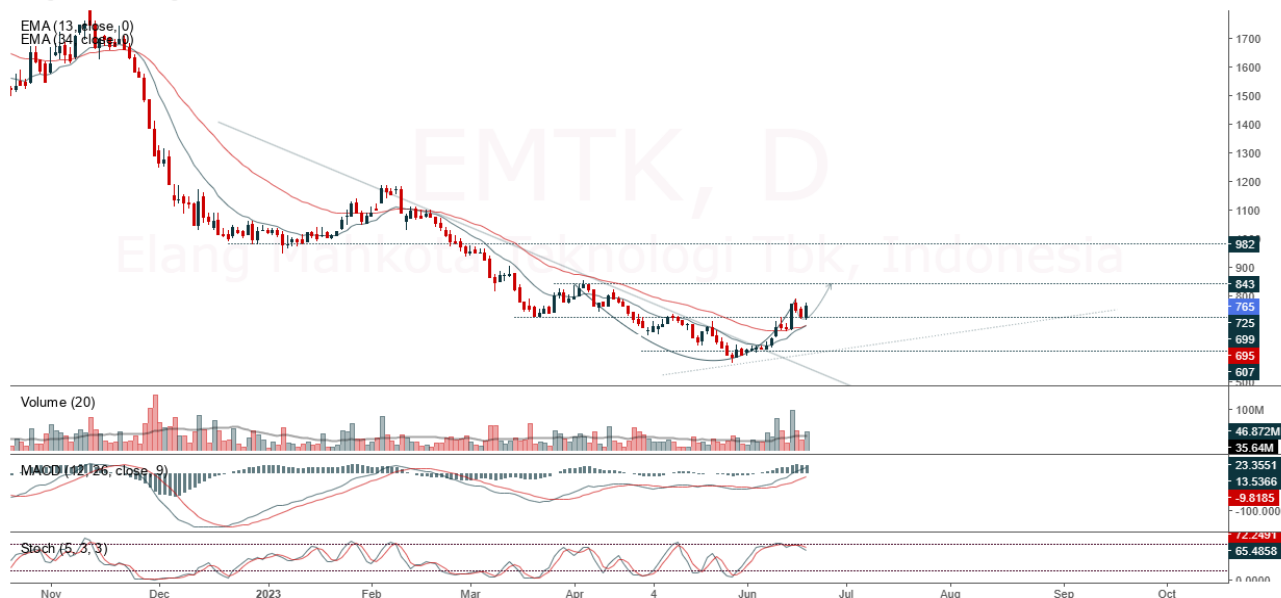
1. Target Price: The price has a bullish opportunity to test the resistance level 1,365. If it breaks level 1,365 then the price will go to level 1,380. We recommend to be careful if the price fails to break through or turn around the support area.

2. Stop Loss: To minimize the risk of loss, we recommend placing a stop loss at level 1,305.

Entry Buy : 1,320 – 1,340
 Target Price : 1,365 – 1,380
 Support : 1,310 – 1,320
 Cutloss : 1,305

EMTK

Elang Mahkota Teknologi Tbk, Indonesia, Jakarta:EMTK, D



(EMTK) The price closed higher and rallied again. The price has the opportunity to strengthen again to the nearest resistance. Stochastic indicator is bearish, MACD histogram is moving positive (bullish line) and volume is increasing. Confirmation to buy if the next candle is bullish again or buy on support if it goes down first. We suggest being careful if it fails to stay above the support level. **(Trading Buy)**

TRADING STRATEGY:

1. Target Price: The price has a bullish opportunity to test the resistance level 790. If it breaks level 790 then the price will go to level 805. We recommend to be careful if the price fails to break through or turn around the support area.

2. Stop Loss: To minimize the risk of loss, we recommend placing a stop loss at level 730.

Entry Buy : 745 – 765
Target Price : 790 – 805
Support : 735 – 745
Cutloss : 730

JPFA

Japfa Comfeed Indonesia Tbk, Indonesia, Jakarta:JPFA, D



(JPFA)** The price closed higher with a bullish candle. The price has the opportunity to strengthen again to the nearest resistance. Stochastic golden cross indicator, MACD histogram is moving positive again (bullish line) and volume is increasing. Confirmation to buy if the next candle is bullish again or buy on support if it goes down first. We suggest being careful if it fails to stay above the support level. **(Trading Buy)

TRADING STRATEGY:

- 1.Target Price: The price has a bullish opportunity to test the resistance level 1,285. If it breaks level 1,285 then the price will go to level 1,300. We recommend to be careful if the price fails to break through or turn around the support area.
2. Stop Loss: To minimize the risk of loss, we recommend placing a stop loss at level 1,215.

Entry Buy : 1,240 – 1,260
 Target Price : 1,285 – 1,300
 Support : 1,220 – 1,240
 Cutloss : 1,215

Forecast – Technical Analysis

Ticker	MA5	RSI Rec	MACD Trend	Recomm.	Pivot Point	Support		Resistance		Stop Loss Level
						1	2	1	2	
JCI	Positif	Trading	Positif	Spec. Buy	6,675	6,650	6,600	6,700	6,750	6,500
ACES	Positif	Trading	Negatif	Hold	655	605	565	695	745	555
ADRO	Negatif	Trading	Positif	Hold	2,270	2,245	2,230	2,285	2,310	2,195
AKRA	Negatif	OverBought	Positif	Sell	1,500	1,485	1,465	1,520	1,535	1,445
AMRT	Positif	Oversold	Negatif	Spec. Buy	2,580	2,545	2,520	2,605	2,640	2,480
ANTM	Negatif	Trading	Positif	Hold	2,015	1,995	1,985	2,025	2,045	1,955
ARTO	Positif	Trading	Positif	Spec. Buy	3,065	2,900	2,735	3,230	3,395	2,695
ASII	Positif	Trading	Negatif	Hold	6,850	6,750	6,625	6,975	7,075	6,525
BBCA	Positif	Trading	Negatif	Hold	9,075	9,025	8,950	9,150	9,200	8,825
BBNI	Negatif	Trading	Positif	Hold	9,075	9,050	8,975	9,150	9,175	8,825
BBRI	Positif	OverBought	Negatif	Sell	5,550	5,500	5,475	5,575	5,625	5,375
BBTN	Negatif	Trading	Positif	Hold	1,325	1,310	1,290	1,345	1,360	1,270
BMRI	Negatif	Trading	Positif	Hold	5,075	5,050	5,025	5,100	5,125	4,950
BRIS	Positif	Trading	Negatif	Hold	1,645	1,635	1,625	1,655	1,665	1,600
BRPT	Negatif	Trading	Positif	Hold	750	740	730	760	770	720
BUKA	Negatif	Trading	Positif	Hold	216	210	206	220	226	203
CPIN	Negatif	OverBought	Positif	Sell	5,225	5,150	5,125	5,250	5,325	5,025
EMTK	Negatif	Trading	Positif	Hold	745	715	685	775	805	675
ESSA	Positif	Trading	Positif	Spec. Buy	590	580	565	605	615	560
EXCL	Positif	Trading	Negatif	Hold	1,955	1,945	1,925	1,975	1,985	1,895
GOTO	Negatif	Trading	Negatif	Sell	118	117	116	119	120	114
HRUM	Positif	Trading	Positif	Spec. Buy	1,415	1,390	1,380	1,425	1,450	1,355
ICBP	Positif	Trading	Negatif	Hold	11,275	11,175	11,075	11,375	11,475	10,900
INCO	Positif	Trading	Positif	Spec. Buy	6,450	6,400	6,350	6,500	6,550	6,250
INDF	Positif	Trading	Negatif	Hold	7,275	7,175	7,050	7,400	7,500	6,950
INDY	Positif	Trading	Positif	Spec. Buy	1,940	1,910	1,900	1,950	1,980	1,870
INKP	Negatif	OverBought	Positif	Sell	8,050	7,925	7,850	8,125	8,250	7,725
INTP	Negatif	Trading	Positif	Hold	9,750	9,700	9,575	9,875	9,925	9,425
ITMG	Negatif	Oversold	Positif	Spec. Buy	24,100	23,800	23,625	24,275	24,575	23,250
JPFA	Negatif	Trading	Negatif	Sell	1,240	1,220	1,195	1,265	1,285	1,175
KLBF	Negatif	Trading	Positif	Hold	2,065	2,050	2,035	2,080	2,095	2,005
MDKA	Positif	Oversold	Positif	Buy	2,960	2,865	2,770	3,055	3,150	2,725
MEDC	Negatif	Trading	Positif	Hold	920	895	875	940	965	860
PGAS	Negatif	Oversold	Negatif	Specu. Buy	1,310	1,300	1,295	1,315	1,325	1,275
PTBA	Negatif	OverBought	Positif	Sell	3,860	3,840	3,820	3,880	3,900	3,765
SCMA	Positif	Trading	Positif	Spec. Buy	165	162	159	168	171	156
SIDO	Positif	Oversold	Negatif	Spec. Buy	730	715	710	735	750	695
SMGR	Negatif	Trading	Positif	Hold	6,000	5,975	5,900	6,075	6,100	5,825
SRTG	Positif	Trading	Positif	Spec. Buy	1,705	1,690	1,665	1,730	1,745	1,640
TBIG	Positif	Trading	Negatif	Hold	2,065	2,040	2,015	2,090	2,115	1,985
TINS	Positif	Trading	Positif	Spec. Buy	955	940	910	985	1,000	900
TLKM	Positif	Trading	Negatif	Hold	3,970	3,960	3,940	3,990	4,000	3,880
TOWR	Positif	Trading	Positif	Spec. Buy	1,030	1,025	1,010	1,045	1,050	995
TPIA	Positif	Trading	Positif	Spec. Buy	2,085	2,070	2,045	2,110	2,125	2,015
UNTR	Negatif	Trading	Positif	Hold	23,225	23,075	22,850	23,450	23,600	22,500
UNVR	Positif	Trading	Negatif	Hold	4,335	4,295	4,265	4,365	4,405	4,200

OUR TEAM

Sukarno Alatas

Head of Equity Research

sukarno@kiwoom.co.id | 021 5010 5800**Michelle Abadi**

Associate

michelle@kiwoom.co.id | 021 5010 5800**Abdul Azis Setyo Wibowo**

Equity Research Analyst

azis@kiwoom.co.id | 021 5010 5800**OTHER DISCLOSURES**

All Kiwoom's research reports made available to clients are simultaneously available on our own website <http://www.kiwoom.co.id/>. Not all research content is redistributed, e-mailed or made available to third-party aggregators. For all research reports available on a particular stock, please contact your sales representative. Any data discrepancies in this report could be the result of different calculations and/or adjustments.

DISCLAIMER This report has been prepared and issued by PT Kiwoom Sekuritas Indonesia. Information has been obtained from sources believed to be reliable but Kiwoom Securities do not warrant its completeness or accuracy. Forward-looking information or statements in this report contain information that is based on forecast of future results, estimates of amounts not yet determinable, assumptions, and therefore involve known and unknown risks and uncertainties which may cause the actual results, performance or achievements of their subject matter to be materially different from current expectations.

To the fullest extent allowed by law, PT Kiwoom Sekuritas Indonesia shall not be liable for any direct, indirect or consequential losses, loss of profits, damages, costs or expenses incurred or suffered by any person or organization arising from reliance on or use of any information contained on this report. The information that we provide should not be construed in any manner whatsoever as, personalized advice.

No mention of a particular security in this report constitutes a recommendation to buy, sell or hold that or any security, or that any particular security, portfolio of securities, transaction or investment strategy is suitable for any specific person. This report is being supplied to you solely for your information and may not be reproduced by, further distributed to or published in whole or in part by, any other person.