

JCI Range Today 6,598 – 6,662 (Support), 6,702 – 6,717 (Resistance)

Jakarta Stock Exchange Composite Index, Indonesia, Jakarta:JKSE, D



JCI closed slightly lower with a bearish candle. Stochastic indicator is sloping, MACD histogram is moving positive (sloping line) and volume is increasing. If it moves bearish again, JCI is expected to weaken again to the support range of 6,598 – 6,662. If JCI is able to move bullish, there is a chance for JCI to go to the resistance at the range of 6,702 – 6,717.

BRIS

Bank BRISyariah Tbk PT, Indonesia, Jakarta:BRIS, D

EMA (13, close, 0)
EMA (34, close, 0)



(BRIS) The price closed higher with a bullish candle. The price has the opportunity to strengthen to the nearest resistance. Stochastic golden cross indicator, MACD histogram is moving positive (golden cross line) and volume is increasing. Confirmation to buy if the next candle is bullish again or buy on support if it goes down first. We suggest being careful if it fails to stay above the support level. **(Trading buy)**

TRADING STRATEGY:

1. Target Price: The price has a bullish opportunity to test the resistance level 1,720. If it breaks level 1,720 then the price will go to level 1,735. We recommend to be careful if the price fails to break through or turn around the support area.

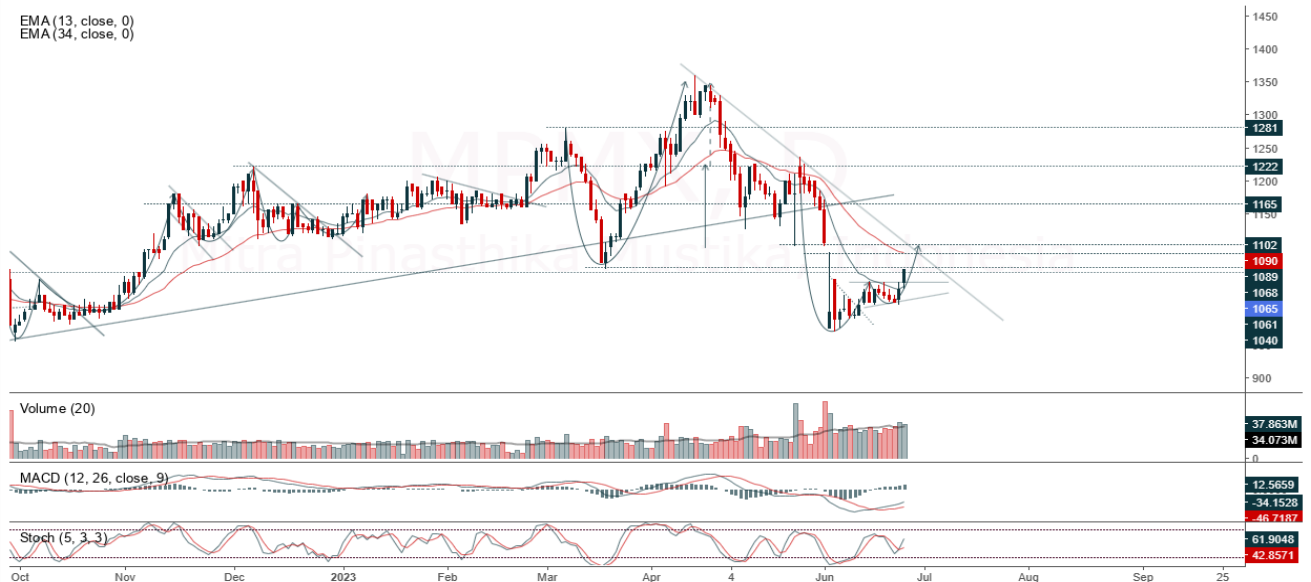
2. Stop Loss: To minimize the risk of loss, we recommend placing a stop loss at level 1,640.

Entry Buy : 1,655 – 1,690
Target Price : 1,720 – 1,735
Support : 1,645 – 1,655
Cutloss : 1,640

MPMX

Mitra Pinasthika Mustika, Indonesia, Jakarta:MPMX, D

EMA (13, close, 0)
EMA (34, close, 0)



(MPMX) The price closed higher with a bullish candle. The price has the opportunity to re-test the nearest resistance. Stochastic golden cross indicator, MACD histogram is moving positive again (bullish line) and volume is decreasing but still high. Confirmation to buy if the next candle is bullish again or buy on support if it goes down first. We suggest being careful if it fails to stay above the support level. **(Trading buy)**

TRADING STRATEGY:

1. Target Price: The price has a bullish opportunity to test the resistance level 1,090. If it breaks level 1,090 then the price will go to level 1,100. We recommend to be careful if the price fails to break through or turn around the support area.

2. Stop Loss: To minimize the risk of loss, we recommend placing a stop loss at level 1,030.

Entry Buy : 1,045 – 1,065
Target Price : 1,090 – 1,100
Support : 1,035 – 1,045
Cutloss : 1,030

PTPP

Pembangunan Perumahan, Indonesia, Jakarta:PTPP, D



(PTPP) The price closed higher and formed a swing low. The price has the opportunity to strengthen again to the nearest resistance. Stochastic golden cross indicator, MACD histogram is moving positive (bullish line) and volume is increasing. Confirmation to buy if the next candle is bullish again or buy on support if it goes down first. We suggest being careful if it fails to stay above the support level. **(Trading buy)**

TRADING STRATEGY:

1. Target Price: The price has a bullish opportunity to test the resistance level 620. If it breaks level 620 then the price will go to level 630. We recommend to be careful if the price fails to break through or turn around the support area.

2. Stop Loss: To minimize the risk of loss, we recommend placing a stop loss at level 580.

Entry Buy : 595 – 605
Target Price : 620 – 630
Support : 585 – 595
Cutloss : 580

SCMA

Surya Citra Media Tbk, Indonesia, Jakarta:SCMA, W



(SCMA) The price closed higher with a bullish candle. The price has the opportunity to re-test the nearest resistance. The stochastic indicator has returned to a golden cross potential, MACD histogram is moving positive again (bullish line) and volume is increasing. Confirmation to buy if the next candle is bullish again or buy on support if it goes down first. We suggest being careful if it fails to stay above the support level. **(Trading buy)**

TRADING STRATEGY:

- 1.Target Price: The price has a bullish opportunity to test the resistance level 167. If it breaks level 167 then the price will go to level 170. We recommend to be careful if the price fails to break through or turn around the support area.
2. Stop Loss: To minimize the risk of loss, we recommend placing a stop loss at level 155.

Entry Buy : 158 – 162
Target Price : 167 – 170
Support : 156 – 158
Cutloss : 155

Forecast – Technical Analysis

Ticker	MA5	RSI Rec	MACD Trend	Recomm.	Pivot Point	Support		Resistance		Stop Loss Level
						1	2	1	2	
JCI	Negatif	Trading	Positif	Hold	6,675	6,650	6,650	6,675	6,700	6,550
ACES	Negatif	Trading	Negatif	Sell	680	670	665	685	695	655
ADRO	Positif	Oversold	Positif	Buy	2,230	2,195	2,180	2,245	2,280	2,145
AKRA	Positif	Trading	Positif	Spec. Buy	1,450	1,405	1,345	1,510	1,555	1,325
AMRT	Negatif	Oversold	Negatif	Specu. Buy	2,590	2,555	2,520	2,625	2,660	2,480
ANTM	Positif	Trading	Negatif	Hold	1,955	1,945	1,940	1,960	1,970	1,910
ARTO	Negatif	OverBought	Positif	Sell	3,225	3,120	3,065	3,280	3,385	3,020
ASII	Negatif	Trading	Negatif	Sell	6,800	6,750	6,725	6,825	6,875	6,625
BBCA	Negatif	Trading	Negatif	Sell	9,100	9,050	9,000	9,150	9,200	8,875
BBNI	Negatif	Trading	Positif	Hold	9,125	9,100	9,025	9,200	9,225	8,900
BBRI	Positif	Trading	Negatif	Hold	5,450	5,400	5,375	5,475	5,525	5,300
BBTN	Negatif	Trading	Positif	Hold	1,320	1,305	1,295	1,330	1,345	1,275
BMRI	Negatif	Trading	Positif	Hold	5,200	5,150	5,100	5,250	5,300	5,025
BRIS	Negatif	Trading	Negatif	Sell	1,675	1,665	1,640	1,700	1,710	1,615
BRPT	Positif	Trading	Positif	Spec. Buy	745	730	720	755	770	710
BUKA	Negatif	Trading	Positif	Hold	210	208	204	214	216	201
CPIN	Positif	OverBought	Positif	Hold	5,275	5,150	5,075	5,350	5,475	5,000
EMTK	Positif	Trading	Positif	Spec. Buy	705	700	685	720	725	675
ESSA	Positif	Trading	Positif	Spec. Buy	570	545	530	585	610	520
EXCL	Positif	Trading	Negatif	Hold	1,975	1,950	1,930	1,995	2,020	1,900
GOTO	Positif	Trading	Negatif	Hold	112	109	107	114	117	105
HRUM	Negatif	Trading	Negatif	Sell	1,420	1,410	1,400	1,430	1,440	1,380
ICBP	Negatif	Trading	Negatif	Sell	11,350	11,250	11,150	11,450	11,550	10,975
INCO	Positif	Oversold	Negatif	Spec. Buy	6,300	6,225	6,125	6,400	6,475	6,025
INDF	Negatif	Trading	Negatif	Sell	7,325	7,300	7,225	7,400	7,425	7,125
INDY	Positif	Trading	Positif	Spec. Buy	1,910	1,900	1,890	1,920	1,930	1,860
INKP	Negatif	OverBought	Positif	Sell	8,575	8,400	8,250	8,725	8,900	8,125
INTP	Negatif	Trading	Positif	Hold	9,850	9,775	9,650	9,975	10,050	9,500
ITMG	Negatif	Oversold	Positif	Spec. Buy	24,075	24,025	23,950	24,150	24,200	23,600
JPFA	Negatif	OverBought	Positif	Sell	1,320	1,295	1,270	1,345	1,370	1,250
KLBF	Positif	Trading	Positif	Spec. Buy	2,050	2,035	2,030	2,055	2,070	1,995
MDKA	Negatif	Trading	Positif	Hold	3,080	3,050	3,020	3,110	3,140	2,975
MEDC	Negatif	Trading	Positif	Hold	895	885	875	905	915	860
PGAS	Positif	Oversold	Negatif	Spec. Buy	1,310	1,300	1,300	1,310	1,320	1,280
PTBA	Positif	Oversold	Positif	Buy	2,680	2,680	2,680	2,680	2,680	2,640
SCMA	Negatif	Trading	Positif	Hold	160	157	153	164	167	150
SIDO	Positif	Trading	Positif	Spec. Buy	735	725	720	740	750	710
SMGR	Negatif	OverBought	Positif	Sell	6,150	6,075	6,025	6,200	6,275	5,925
SRTG	Negatif	Trading	Positif	Hold	1,665	1,640	1,615	1,690	1,715	1,590
TBIG	Positif	Trading	Negatif	Hold	2,035	1,995	1,975	2,055	2,095	1,945
TINS	Positif	Oversold	Negatif	Spec. Buy	895	880	870	905	920	855
TLKM	Positif	Trading	Negatif	Hold	4,015	3,995	3,975	4,035	4,055	3,915
TOWR	Negatif	OverBought	Positif	Sell	1,060	1,055	1,050	1,065	1,070	1,035
TPIA	Negatif	Trading	Positif	Hold	2,095	2,065	2,045	2,115	2,145	2,010
UNTR	Negatif	Trading	Positif	Hold	23,250	23,175	23,050	23,375	23,450	22,700
UNVR	Positif	Oversold	Negatif	Spec. Buy	4,250	4,220	4,200	4,270	4,300	4,135

OUR TEAM

Sukarno Alatas

Head of Equity Research

sukarno@kiwoom.co.id | 021 5010 5800**Michelle Abadi**

Associate

michelle@kiwoom.co.id | 021 5010 5800**Abdul Azis Setyo Wibowo**

Equity Research Analyst

azis@kiwoom.co.id | 021 5010 5800**OTHER DISCLOSURES**

All Kiwoom's research reports made available to clients are simultaneously available on our own website <http://www.kiwoom.co.id/>. Not all research content is redistributed, e-mailed or made available to third-party aggregators. For all research reports available on a particular stock, please contact your sales representative. Any data discrepancies in this report could be the result of different calculations and/or adjustments.

DISCLAIMER This report has been prepared and issued by PT Kiwoom Sekuritas Indonesia. Information has been obtained from sources believed to be reliable but Kiwoom Securities do not warrant its completeness or accuracy. Forward-looking information or statements in this report contain information that is based on forecast of future results, estimates of amounts not yet determinable, assumptions, and therefore involve known and unknown risks and uncertainties which may cause the actual results, performance or achievements of their subject matter to be materially different from current expectations.

To the fullest extent allowed by law, PT Kiwoom Sekuritas Indonesia shall not be liable for any direct, indirect or consequential losses, loss of profits, damages, costs or expenses incurred or suffered by any person or organization arising from reliance on or use of any information contained on this report. The information that we provide should not be construed in any manner whatsoever as, personalized advice.

No mention of a particular security in this report constitutes a recommendation to buy, sell or hold that or any security, or that any particular security, portfolio of securities, transaction or investment strategy is suitable for any specific person. This report is being supplied to you solely for your information and may not be reproduced by, further distributed to or published in whole or in part by, any other person.