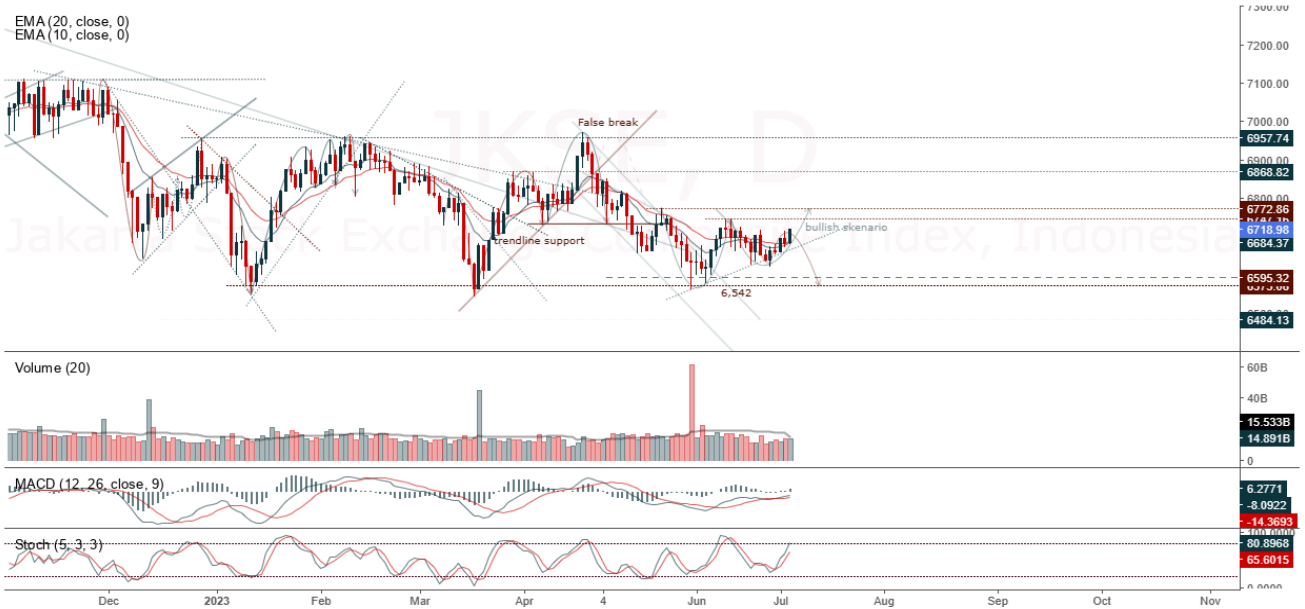




JCI Range Today 6,679 – 6,696 (Support), 6,757 – 6,772 (Resistance)

Jakarta Stock Exchange Composite Index, Indonesia, Jakarta:JKSE, D

EMA (20, close, 0)
EMA (10, close, 0)



JCI closed higher with a bullish candle. Stochastic indicator is bullish, MACD histogram is moving positive (bullish line) and volume is increasing. If it moves bearish again, JCI is expected to weaken again to the support range of 6,635 – 6,652. If JCI is able to move bullish, there is a chance for JCI to go to the resistance at the range of 6,757 – 6,772.

ADHI

Adhi Karya Persero Tbk, Indonesia, Jakarta:ADHI, D

EMA (13, close, 0)
EMA (34, close, 0)



(ADHI) The price closed higher and formed a swing low. The price has the opportunity to strengthen to the nearest resistance. Stochastic golden cross indicator, MACD histogram is moving in the positive direction (dead line cross) and volume is increasing. Confirmation to buy if the next candle is bullish again or buy on support if it goes down first. We suggest being careful if it fails to stay above the support level. **(Trading buy)**

TRADING STRATEGY:

1. Target Price: The price has a bullish opportunity to test the resistance level 476. If it breaks level 476 then the price will go to level 482. We recommend to be careful if the price fails to break through or turn around the support area.

2. Stop Loss: To minimize the risk of loss, we recommend placing a stop loss at level 452.

Entry Buy : 458 – 466
Target Price : 476 – 482
Support : 454 – 458
Cutloss : 452

INKP

Indah Kiat Pulp & Paper Tbk, Indonesia, Jakarta:INKP, D

EMA (13, close, 0)
EMA (34, close, 0)



(INKP) The price closed higher with a bullish candle. The price has the opportunity to re-test the nearest resistance. Stochastic indicator is bullish, MACD histogram is moving positive again (sloping line) and volume is increasing. Confirmation to buy if the next candle is bullish again (buy on break at level of 8.775) or buy on support if it goes down first. We suggest being careful if it fails to stay above the support level. **(Buy on break or Trading buy)**

TRADING STRATEGY:

1. Target Price: The price has a bullish opportunity to test the resistance level 8,925. If it breaks level 8,925 then the price will go to level 9,025. We recommend to be careful if the price fails to break through or turn around the support area.

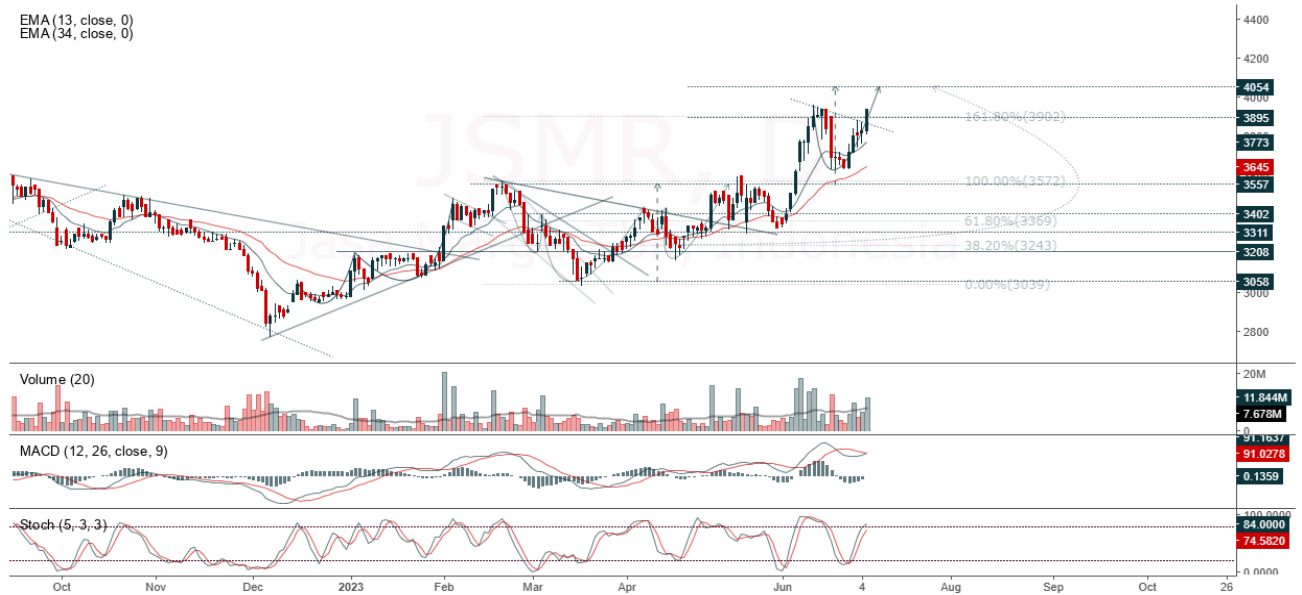
2. Stop Loss: To minimize the risk of loss, we recommend placing a stop loss at level 8,425.

Entry Buy : 8,550 – 8,725
Target Price : 8,925 – 9,025
Support : 8,450 – 8,550
Cutloss : 8,425

JSMR

Jasa Marga Tbk, Indonesia, Jakarta:JSMR, D

EMA (13, close, 0)
EMA (34, close, 0)



(JSMR) The price closed higher and is testing resistance. The price has the opportunity to breakout and strengthen to the next resistance. Stochastic indicator is bullish, MACD histogram is moving positive (golden cross line) and volume is increasing. Confirmation to buy if the next candle is bullish again (Buy on Break at level of 3,960) or buy on support if it goes down first. We suggest being careful if it fails to stay above the support level. **(Trading buy)**

TRADING STRATEGY:

1. Target Price: The price has a bullish opportunity to test the resistance level 4,050. If it breaks level 4,050 then the price will go to level 4,090. We recommend to be careful if the price fails to break through or turn around the support area.

2. Stop Loss: To minimize the risk of loss, we recommend placing a stop loss at level 3,830.

Entry Buy : 3,870 – 3,940
Target Price : 4,050 – 4,090
Support : 3,840 – 3,870
Cutloss : 3,830

MYOR

Mayora Indah Tbk, Indonesia, Jakarta:MYOR, D

EMA
EMA



(MYOR) The price closed higher with a bullish candle. The price has the opportunity to re-test the nearest resistance. The stochastic indicator is back to the golden cross, MACD histogram is moving in the positive direction (golden cross line) again and volume is increasing. Confirmation to buy if the next candle is bullish again or buy on support if it goes down first. We suggest being careful if it fails to stay above the support level. **(Trading buy)**

TRADING STRATEGY:

1. Target Price: The price has a bullish opportunity to test the resistance level 2,760. If it breaks level 2,760 then the price will go to level 2,790. We recommend to be careful if the price fails to break through or turn around the support area.

2. Stop Loss: To minimize the risk of loss, we recommend placing a stop loss at level 2,710.

Entry Buy : 2,640 – 2,700
 Target Price : 2,760 – 2,790
 Support : 2,620 – 2,640
 Cutloss : 2,610


Forecast – Technical Analysis

Ticker	MA5	RSI Rec	MACD Trend	Recomm.	Pivot Point	Support		Resistance		Stop Loss Level
						1	2	1	2	
JCI	Negatif	Trading	Positif	Hold	6,700	6,675	6,650	6,725	6,750	6,550
ACES	Positif	Trading	Negatif	Hold	640	625	615	650	665	605
ADRO	Negatif	Trading	Positif	Hold	2,390	2,340	2,300	2,430	2,480	2,265
AKRA	Positif	Trading	Negatif	Hold	1,400	1,385	1,370	1,415	1,430	1,350
AMRT	Positif	Oversold	Positif	Buy	2,605	2,590	2,565	2,630	2,645	2,525
ANTM	Positif	Trading	Negatif	Hold	1,975	1,965	1,945	1,995	2,005	1,915
ARTO	Negatif	OverBought	Positif	Sell	3,420	3,320	3,230	3,510	3,610	3,180
ASII	Negatif	Trading	Negatif	Sell	6,750	6,750	6,675	6,825	6,825	6,575
BBCA	Negatif	Trading	Negatif	Sell	9,050	9,025	9,000	9,075	9,100	8,875
BBNI	Negatif	Trading	Positif	Hold	9,125	9,100	9,050	9,175	9,200	8,925
BBRI	Negatif	Trading	Negatif	Sell	5,425	5,400	5,375	5,450	5,475	5,300
BBTN	Positif	Trading	Positif	Spec. Buy	1,310	1,295	1,275	1,330	1,345	1,255
BMRI	Negatif	Trading	Positif	Hold	5,300	5,250	5,225	5,325	5,375	5,125
BRIS	Negatif	OverBought	Positif	Sell	1,770	1,745	1,725	1,790	1,815	1,695
BRPT	Negatif	Trading	Positif	Hold	760	755	745	770	775	735
BUKA	Negatif	Trading	Positif	Hold	214	210	208	216	220	205
CPIN	Negatif	OverBought	Positif	Sell	5,475	5,425	5,300	5,600	5,650	5,225
EMTK	Negatif	Trading	Positif	Hold	750	740	730	760	770	720
ESSA	Negatif	Trading	Positif	Hold	610	585	560	635	660	550
EXCL	Negatif	Trading	Negatif	Sell	1,990	1,955	1,925	2,020	2,055	1,895
GOTO	Positif	Trading	Negatif	Hold	109	108	106	111	112	104
HRUM	Negatif	OverBought	Positif	Sell	1,600	1,565	1,545	1,620	1,655	1,520
ICBP	Negatif	OverBought	Negatif	Strong Sell	11,475	11,375	11,275	11,575	11,675	11,100
INCO	Positif	Oversold	Negatif	Spec. Buy	6,300	6,200	6,100	6,400	6,500	6,025
INDF	Negatif	Trading	Negatif	Sell	7,400	7,350	7,275	7,475	7,525	7,175
INDY	Negatif	Trading	Positif	Hold	2,025	1,955	1,895	2,085	2,155	1,865
INKP	Negatif	OverBought	Positif	Sell	8,600	8,425	8,250	8,775	8,950	8,125
INTP	Positif	Trading	Positif	Spec. Buy	9,675	9,550	9,450	9,775	9,900	9,300
ITMG	Negatif	Trading	Positif	Hold	24,950	24,750	24,650	25,050	25,250	24,275
JPFA	Negatif	OverBought	Positif	Sell	1,395	1,375	1,360	1,410	1,430	1,335
KLBF	Positif	Oversold	Negatif	Spec. Buy	2,005	1,975	1,960	2,020	2,050	1,930
MDKA	Negatif	Trading	Positif	Hold	3,300	3,210	3,120	3,390	3,480	3,075
MEDC	Positif	Trading	Positif	Spec. Buy	920	910	895	935	945	880
PGAS	Negatif	Trading	Positif	Hold	1,345	1,335	1,325	1,355	1,365	1,305
PTBA	Positif	Oversold	Negatif	Spec. Buy	2,770	2,725	2,700	2,795	2,840	2,655
SCMA	Negatif	OverBought	Positif	Sell	173	169	168	174	178	165
SIDO	Positif	Oversold	Positif	Buy	725	720	715	730	735	705
SMGR	Positif	Trading	Positif	Spec. Buy	6,125	6,075	6,000	6,200	6,250	5,900
SRTG	Positif	Trading	Positif	Spec. Buy	1,735	1,710	1,680	1,765	1,790	1,655
TBIG	Positif	Trading	Negatif	Hold	2,025	1,995	1,985	2,035	2,065	1,955
TINS	Positif	Oversold	Negatif	Spec. Buy	925	910	900	935	950	885
TLKM	Negatif	Trading	Negatif	Sell	3,970	3,960	3,940	3,990	4,000	3,880
TOWR	Negatif	OverBought	Positif	Sell	1,105	1,075	1,055	1,125	1,155	1,035
TPIA	Negatif	Trading	Positif	Hold	2,085	2,065	2,035	2,115	2,135	2,000
UNTR	Positif	Trading	Positif	Spec. Buy	23,450	23,150	22,825	23,775	24,075	22,500
UNVR	Negatif	Trading	Negatif	Sell	4,315	4,295	4,265	4,345	4,365	4,200

OUR TEAM

Sukarno Alatas

Head of Equity Research

sukarno@kiwoom.co.id | 021 5010 5800**Michelle Abadi**

Associate

michelle@kiwoom.co.id | 021 5010 5800**Abdul Azis Setyo Wibowo**

Equity Research Analyst

azis@kiwoom.co.id | 021 5010 5800**Dali Fikriana**

Research Intern

dali@kiwoom.co.id | 021 5010 5800**OTHER DISCLOSURES**

All Kiwoom's research reports made available to clients are simultaneously available on our own website <http://www.kiwoom.co.id/>. Not all research content is redistributed, e-mailed or made available to third-party aggregators. For all research reports available on a particular stock, please contact your sales representative. Any data discrepancies in this report could be the result of different calculations and/or adjustments.

DISCLAIMER This report has been prepared and issued by PT Kiwoom Sekuritas Indonesia. Information has been obtained from sources believed to be reliable but Kiwoom Securities do not warrant its completeness or accuracy. Forward-looking information or statements in this report contain information that is based on forecast of future results, estimates of amounts not yet determinable, assumptions, and therefore involve known and unknown risks and uncertainties which may cause the actual results, performance or achievements of their subject matter to be materially different from current expectations.

To the fullest extent allowed by law, PT Kiwoom Sekuritas Indonesia shall not be liable for any direct, indirect or consequential losses, loss of profits, damages, costs or expenses incurred or suffered by any person or organization arising from reliance on or use of any information contained on this report. The information that we provide should not be construed in any manner whatsoever as, personalized advice.

No mention of a particular security in this report constitutes a recommendation to buy, sell or hold that or any security, or that any particular security, portfolio of securities, transaction or investment strategy is suitable for any specific person. This report is being supplied to you solely for your information and may not be reproduced by, further distributed to or published in whole or in part by, any other person.