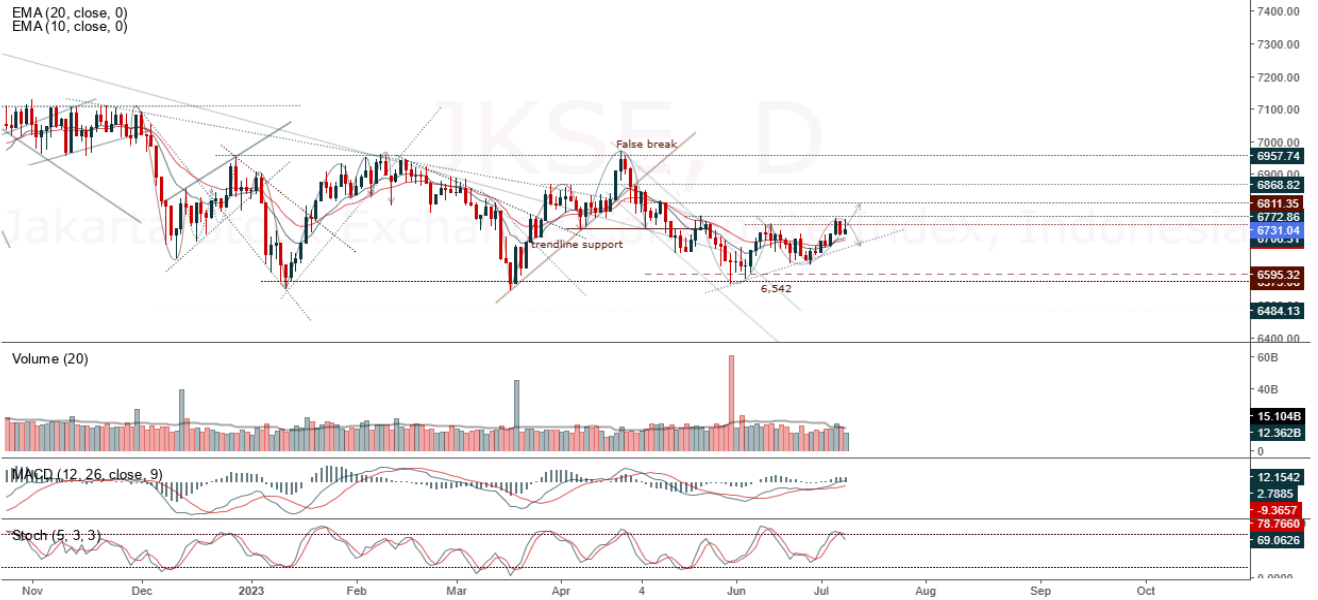


JCI Range Today 6,676 – 6,696 (Support), 6,763 – 6,772 (Resistance)

Jakarta Stock Exchange Composite Index, Indonesia, Jakarta:JKSE, D



JCI closed higher with a bullish candle. Stochastic indicator is flat, MACD histogram is moving positive (bullish line) and volume is decreasing. If it moves bearish again, JCI is expected to weaken again to the support range of 6,676 – 6,696. If JCI is able to move bullish, there is a chance for JCI to go to the resistance at the range of 6,763 – 6,772.

CLEO

Sariguna Primatirta PT, Indonesia, Jakarta:CLEO, D

EMA (34, close, 0)
EMA (13, close, 0)



(CLEO) The price closed higher with a bullish candle. The price has the opportunity to strengthen to the nearest resistance. The stochastic indicator has a golden cross potential, MACD histogram is moving positive (bullish line) and volume is neutral. Confirmation to buy if the next candle is bullish again or buy on support if it goes down first. We suggest being careful if it fails to stay above the support level. **(Trading buy)**

TRADING STRATEGY:

1. Target Price: The price has a bullish opportunity to test the resistance level 660. If it breaks level 660 then the price will go to level 670. We recommend to be careful if the price fails to break through or turn around the support area.

2. Stop Loss: To minimize the risk of loss, we recommend placing a stop loss at level 615.

Entry Buy : 630 – 640
Target Price : 660 – 670
Support : 620 – 630
Cutloss : 615

MPMX

Mitra Pinasthika Mustika, Indonesia, Jakarta:MPMX, D

EMA (13, close, 0)
EMA (34, close, 0)



(MPMX) The price closed higher with a bullish candle. The price has the opportunity to re-test the nearest resistance. The stochastic indicator has a potential golden cross, MACD histogram is moving positive again (bullish line) and volume is increasing. Confirmation to buy if the next candle is bullish again or buy on support if it goes down first. We suggest being careful if it fails to stay above the support level. **(Trading buy)**

TRADING STRATEGY:

1.Target Price: The price has a bullish opportunity to test the resistance level 1,100. If it breaks level 1,100 then the price will go to level 1,115. We recommend to be careful if the price fails to break through or turn around the support area.

2. Stop Loss: To minimize the risk of loss, we recommend placing a stop loss at level 1,040.

Entry Buy : 1,060 – 1,075
Target Price : 1,100 – 1,115
Support : 1,045 – 1,060
Cutloss : 1,040

PWON

Pakuwon Jati Tbk, Indonesia, Jakarta:PWON, D

EMA (13, close, 0)
EMA (34, close, 0)



(PWON) The price closed higher and formed a swing low. The price has the opportunity to continue strengthening to the nearest resistance. The stochastic golden cross indicator, MACD histogram is moving in the positive direction (bullish line) and the volume trend is increasing. Confirmation to buy if the next candle is bullish again or buy on support if it goes down first. We suggest being careful if it fails to stay above the support level.
(Trading buy)

TRADING STRATEGY:

1. Target Price: The price has a bullish opportunity to test the resistance level 500. If it breaks level 500 then the price will go to level 510. We recommend to be careful if the price fails to break through or turn around the support area.

2. Stop Loss: To minimize the risk of loss, we recommend placing a stop loss at level 474.

Entry Buy : 480 – 490
Target Price : 500 – 510
Support : 476 – 480
Cutloss : 474

SAME

Sarana Meditama Metropolitan, Indonesia, Jakarta: SAME, D

EMA (34, close, 0)
EMA (13, close, 0)



(SAME) The price closed higher with a bullish candle. The price has the opportunity to re-test the nearest resistance. The stochastic indicator is back to a golden cross, MACD histogram is moving positive again (golden cross line) and volume is increasing. Confirmation to buy if the next candle is bullish again or buy on support if it goes down first. We suggest being careful if it fails to stay above the support level. **(Trading buy)**

TRADING STRATEGY:

- 1.Target Price: The price has a bullish opportunity to test the resistance level 370. If it breaks level 370 then the price will go to level 376. We recommend to be careful if the price fails to break through or turn around the support area.
2. Stop Loss: To minimize the risk of loss, we recommend placing a stop loss at level 346.

Entry Buy : 352 – 360
Target Price : 370 – 376
Support : 348 – 352
Cutloss : 346

Forecast – Technical Analysis

Ticker	MAS	RSI Rec	MACD Trend	Recomm.	Pivot Point	Support		Resistance		Stop Loss Level
						1	2	1	2	
JCI	Negatif	Trading	Positif	Hold	6,750	6,700	6,700	6,750	6,775	6,600
ACES	Negatif	OverBought	Negatif	Strong Sell	720	705	690	735	750	680
ADRO	Negatif	Trading	Positif	Hold	2,400	2,375	2,350	2,425	2,450	2,310
AKRA	Negatif	Trading	Negatif	Sell	1,455	1,440	1,430	1,465	1,480	1,410
AMRT	Negatif	Trading	Positif	Hold	2,700	2,670	2,650	2,720	2,750	2,610
ANTM	Negatif	Trading	Negatif	Sell	1,985	1,975	1,970	1,990	2,000	1,940
ARTO	Negatif	Trading	Negatif	Sell	3,210	3,105	3,050	3,265	3,370	3,000
ASII	Positif	Trading	Negatif	Hold	6,800	6,775	6,750	6,825	6,850	6,650
BBCA	Positif	Trading	Negatif	Hold	9,075	9,050	9,025	9,100	9,125	8,900
BBNI	Positif	Trading	Positif	Spec. Buy	9,075	9,025	9,000	9,100	9,150	8,875
BBRI	Positif	Trading	Negatif	Hold	5,425	5,375	5,325	5,475	5,525	5,250
BBTN	Positif	Trading	Negatif	Hold	1,310	1,305	1,295	1,320	1,325	1,275
BMRI	Positif	Trading	Positif	Spec. Buy	5,175	5,150	5,100	5,225	5,250	5,025
BRIS	Negatif	Trading	Positif	Hold	1,725	1,710	1,690	1,745	1,760	1,665
BRPT	Negatif	Trading	Positif	Hold	760	750	740	770	780	730
BUKA	Negatif	Trading	Positif	Hold	216	213	212	217	220	208
CPIN	Negatif	OverBought	Positif	Sell	5,400	5,325	5,275	5,450	5,525	5,200
EMTK	Negatif	Trading	Positif	Hold	730	715	705	740	755	695
ESSA	Negatif	OverBought	Positif	Sell	675	650	635	690	715	625
EXCL	Negatif	OverBought	Positif	Sell	2,050	2,020	2,000	2,070	2,100	1,970
GOTO	Positif	Trading	Negatif	Hold	108	107	106	109	110	104
HRUM	Negatif	OverBought	Positif	Sell	1,605	1,570	1,555	1,620	1,655	1,530
ICBP	Positif	Trading	Negatif	Hold	11,350	11,225	11,150	11,425	11,550	10,975
INCO	Negatif	Trading	Negatif	Sell	6,300	6,250	6,200	6,350	6,400	6,125
INDF	Negatif	Trading	Negatif	Sell	7,275	7,250	7,200	7,325	7,350	7,100
INDY	Negatif	Trading	Positif	Hold	2,045	2,020	2,005	2,060	2,085	1,975
INKP	Negatif	OverBought	Positif	Sell	8,900	8,775	8,625	9,050	9,175	8,475
INTP	Negatif	Trading	Positif	Hold	10,125	10,025	9,950	10,200	10,300	9,800
ITMG	Negatif	Trading	Positif	Hold	25,225	24,800	24,475	25,550	25,975	24,100
JPFA	Positif	OverBought	Positif	Hold	1,370	1,350	1,330	1,390	1,410	1,310
KLBF	Positif	Trading	Negatif	Hold	2,000	1,980	1,970	2,010	2,030	1,940
MDKA	Negatif	Trading	Positif	Hold	3,340	3,290	3,240	3,390	3,440	3,190
MEDC	Negatif	Trading	Positif	Hold	920	905	895	930	945	880
PGAS	Negatif	Trading	Positif	Hold	1,355	1,345	1,340	1,360	1,370	1,320
PTBA	Negatif	Oversold	Negatif	Specu. Buy	2,780	2,760	2,750	2,790	2,810	2,710
SCMA	Negatif	OverBought	Positif	Sell	170	167	163	174	177	161
SIDO	Negatif	Trading	Positif	Hold	730	730	725	735	735	715
SMGR	Negatif	OverBought	Positif	Sell	6,425	6,400	6,325	6,500	6,525	6,225
SRTG	Negatif	Trading	Positif	Hold	1,760	1,735	1,710	1,785	1,810	1,685
TBIG	Negatif	Trading	Negatif	Sell	2,010	1,990	1,975	2,025	2,045	1,945
TINS	Negatif	Trading	Positif	Hold	955	950	940	965	970	925
TLKM	Positif	Trading	Positif	Spec. Buy	3,960	3,935	3,920	3,975	4,000	3,860
TOWR	Negatif	OverBought	Positif	Sell	1,110	1,090	1,075	1,125	1,145	1,060
TPIA	Positif	Trading	Positif	Spec. Buy	2,075	2,060	2,035	2,100	2,115	2,005
UNTR	Negatif	Trading	Positif	Hold	24,000	23,875	23,725	24,150	24,275	23,375
UNVR	Positif	Trading	Negatif	Hold	4,265	4,205	4,185	4,285	4,345	4,120

OUR TEAM

Sukarno Alatas

Head of Equity Research

sukarno@kiwoom.co.id | 021 5010 5800**Michelle Abadi**

Associate

michelle@kiwoom.co.id | 021 5010 5800**Abdul Azis Setyo Wibowo**

Equity Research Analyst

azis@kiwoom.co.id | 021 5010 5800**Dali Fikriana**

Research Intern

dali@kiwoom.co.id | 021 5010 5800**OTHER DISCLOSURES**

All Kiwoom's research reports made available to clients are simultaneously available on our own website <http://www.kiwoom.co.id/>. Not all research content is redistributed, e-mailed or made available to third-party aggregators. For all research reports available on a particular stock, please contact your sales representative. Any data discrepancies in this report could be the result of different calculations and/or adjustments.

DISCLAIMER This report has been prepared and issued by PT Kiwoom Sekuritas Indonesia. Information has been obtained from sources believed to be reliable but Kiwoom Securities do not warrant its completeness or accuracy. Forward-looking information or statements in this report contain information that is based on forecast of future results, estimates of amounts not yet determinable, assumptions, and therefore involve known and unknown risks and uncertainties which may cause the actual results, performance or achievements of their subject matter to be materially different from current expectations.

To the fullest extent allowed by law, PT Kiwoom Sekuritas Indonesia shall not be liable for any direct, indirect or consequential losses, loss of profits, damages, costs or expenses incurred or suffered by any person or organization arising from reliance on or use of any information contained on this report. The information that we provide should not be construed in any manner whatsoever as, personalized advice.

No mention of a particular security in this report constitutes a recommendation to buy, sell or hold that or any security, or that any particular security, portfolio of securities, transaction or investment strategy is suitable for any specific person. This report is being supplied to you solely for your information and may not be reproduced by, further distributed to or published in whole or in part by, any other person.