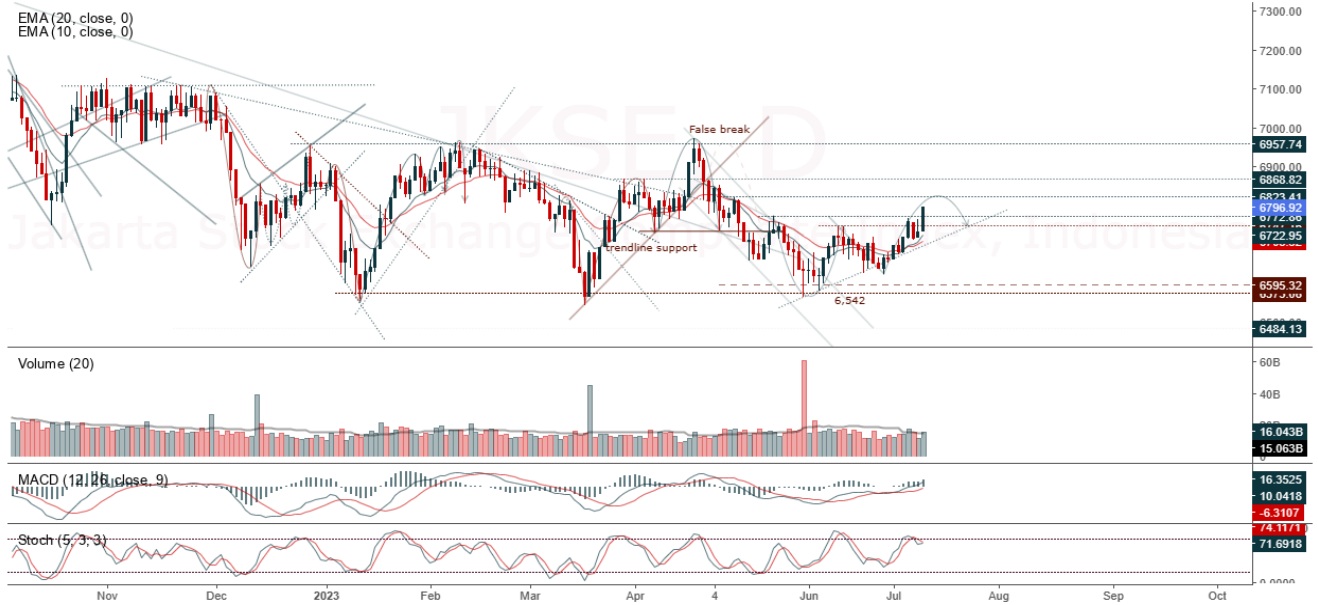


**JCI Range Today 6,676 – 6,696 (Support), 6,763 – 6,772 (Resistance)**

Jakarta Stock Exchange Composite Index, Indonesia, Jakarta:JKSE, D



JCI closed higher with a bullish candle. Stochastic indicator is flat, MACD histogram is moving positive (bullish line) and volume is decreasing. If it moves bearish again, JCI is expected to weaken again to the support range of 6,676 – 6,696. If JCI is able to move bullish, there is a chance for JCI to go to the resistance at the range of 6,763 – 6,772.

## AMRT

Sumber Alfaria Trijaya Tbk, Indonesia, Jakarta:AMRT, D

EMA (13, close, 0)  
EMA (34, close, 0)



**(AMRT)** The price closed higher with a bullish candle. The price has the opportunity to strengthen to the nearest resistance. Stochastic indicator is bullish, MACD histogram is moving positive (bullish line) and volume is increasing. Confirmation to buy if the next candle is bullish again or buy on support if it goes down first. We suggest being careful if it fails to stay above the support level. **(Trading buy)**

### TRADING STRATEGY:

1. Target Price: The price has a bullish opportunity to test the resistance level 2,830. If it breaks level 2,830 then the price will go to level 2,860. We recommend to be careful if the price fails to break through or turn around the support area.

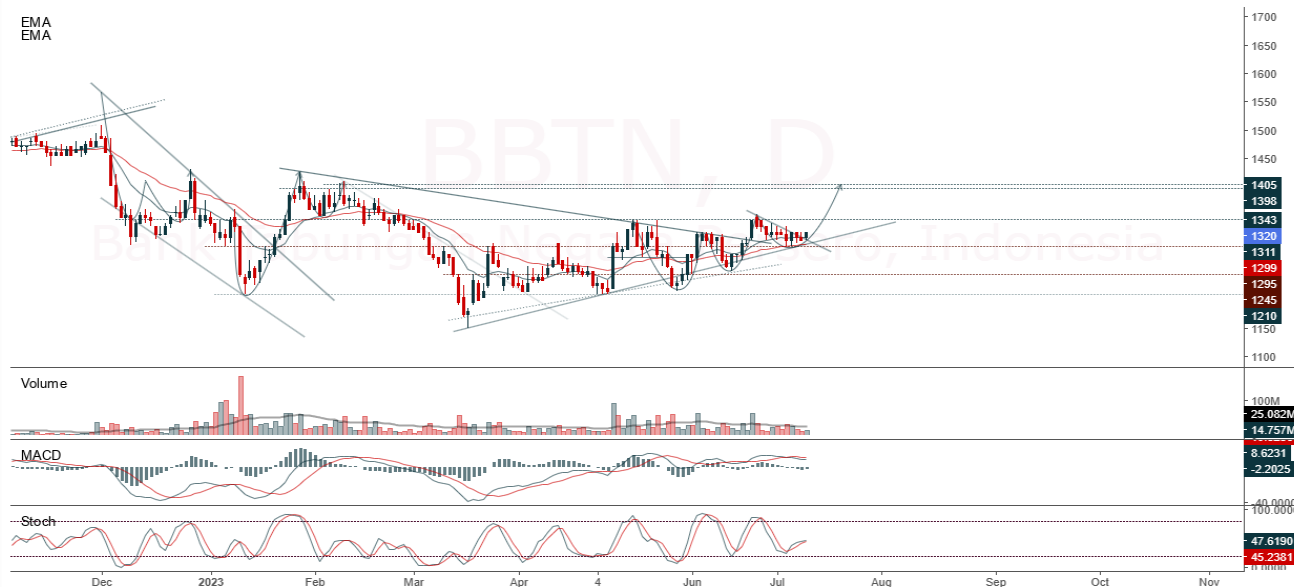
2. Stop Loss: To minimize the risk of loss, we recommend placing a stop loss at level 2,690.

Entry Buy : 2,730 – 2,770  
Target Price : 2,830 – 2,860  
Support : 2,700 – 2,730  
Cutloss : 2,690

**BBTN**

Bank Tabungan Negara Persero, Indonesia, Jakarta:BBTN, D

EMA  
EMA



**(BBTN)** The price closed higher with a bullish candle. The price has the opportunity to re-test the nearest resistance. Stochastic indicator is bullish, MACD histogram is moving in the positive direction (sloping line) and volume is increasing. Confirmation to buy if the next candle is bullish again or buy on support if it goes down first. We suggest being careful if it fails to stay above the support level. **(Trading buy)**

**TRADING STRATEGY:**

1. Target Price: The price has a bullish opportunity to test the resistance level 1,350. If it breaks level 1,350 then the price will go to level 1,360. We recommend to be careful if the price fails to break through or turn around the support area.

2. Stop Loss: To minimize the risk of loss, we recommend placing a stop loss at level 1,290.

Entry Buy : 1,305 – 1,325  
 Target Price : 1,350 – 1,360  
 Support : 1,295 – 1,305  
 Cutloss : 1,290

**EMTK**

Elang Mahkota Teknologi Tbk, Indonesia, Jakarta:EMTK, D

EMA (13, close, 0)  
EMA (34, close, 0)



**(EMTK)** The price closed higher and formed a swing low. The price has the opportunity to continue strengthening to the nearest resistance. The stochastic indicator has a golden cross potential, MACD histogram is moving in the positive direction (bullish line) and volume is increasing. Confirmation to buy if the next candle is bullish again or buy on support if it goes down first. We suggest being careful if it fails to stay above the support level. **(Trading buy)**

**TRADING STRATEGY:**

1.Target Price: The price has a bullish opportunity to test the resistance level 790. If it breaks level 790 then the price will go to level 805. We recommend to be careful if the price fails to break through or turn around the support area.

2. Stop Loss: To minimize the risk of loss, we recommend placing a stop loss at level 725.

Entry Buy : 745 – 760  
Target Price : 790 – 805  
Support : 730 – 745  
Cutloss : 725

**TKIM**

Pabrik Kertas Tjiwi Kimia Tbk, Indonesia, Jakarta:TKIM, D



**(TKIM)** The price closed higher with a bullish candle. The price has the opportunity to re-test the nearest resistance. The stochastic indicator is still bullish, MACD histogram is moving positive again (bullish line) and volume is increasing. Confirmation to buy if the next candle is bullish again or buy on support if it goes down first. We suggest being careful if it fails to stay above the support level. **(Trading buy)**

**TRADING STRATEGY:**

- 1.Target Price: The price has a bullish opportunity to test the resistance level 6,825. If it breaks level 6,825 then the price will go to level 6,925. We recommend to be careful if the price fails to break through or turn around the support area.
2. Stop Loss: To minimize the risk of loss, we recommend placing a stop loss at level 6,475.

Entry Buy : 6,550 – 6,675  
 Target Price : 6,825 – 6,925  
 Support : 6,500 – 6,550  
 Cutloss : 6,475

**Forecast – Technical Analysis**

| Ticker | MA5     | RSI Rec    | MACD Trend | Recomm.     | Pivot Point | Support |        | Resistance |        | Stop Loss Level |
|--------|---------|------------|------------|-------------|-------------|---------|--------|------------|--------|-----------------|
|        |         |            |            |             |             | 1       | 2      | 1          | 2      |                 |
| JCI    | Negatif | Trading    | Positif    | Hold        | 6,775       | 6,725   | 6,700  | 6,800      | 6,825  | 6,600           |
| ACES   | Negatif | OverBought | Negatif    | Strong Sell | 715         | 700     | 695    | 720        | 735    | 680             |
| ADRO   | Negatif | Trading    | Positif    | Hold        | 2,415       | 2,390   | 2,365  | 2,440      | 2,465  | 2,330           |
| AKRA   | Negatif | Trading    | Negatif    | Sell        | 1,465       | 1,450   | 1,435  | 1,480      | 1,495  | 1,415           |
| AMRT   | Negatif | Trading    | Positif    | Hold        | 2,740       | 2,700   | 2,660  | 2,780      | 2,820  | 2,620           |
| ANTM   | Negatif | Trading    | Negatif    | Sell        | 1,990       | 1,985   | 1,970  | 2,005      | 2,010  | 1,940           |
| ARTO   | Positif | Trading    | Negatif    | Hold        | 3,180       | 3,105   | 3,080  | 3,205      | 3,280  | 3,030           |
| ASII   | Negatif | Trading    | Negatif    | Sell        | 6,775       | 6,775   | 6,725  | 6,825      | 6,825  | 6,625           |
| BBCA   | Positif | Trading    | Negatif    | Hold        | 9,075       | 9,025   | 9,000  | 9,100      | 9,150  | 8,850           |
| BBNI   | Positif | Trading    | Negatif    | Hold        | 9,025       | 8,950   | 8,925  | 9,050      | 9,125  | 8,775           |
| BBRI   | Positif | Trading    | Negatif    | Hold        | 5,400       | 5,375   | 5,325  | 5,450      | 5,475  | 5,250           |
| BBTN   | Positif | Trading    | Negatif    | Hold        | 1,315       | 1,310   | 1,295  | 1,330      | 1,335  | 1,275           |
| BMRI   | Positif | Trading    | Positif    | Spec. Buy   | 5,250       | 5,175   | 5,125  | 5,300      | 5,375  | 5,025           |
| BRIS   | Positif | Trading    | Positif    | Spec. Buy   | 1,720       | 1,710   | 1,700  | 1,730      | 1,740  | 1,675           |
| BRPT   | Negatif | Trading    | Positif    | Hold        | 760         | 755     | 750    | 765        | 770    | 740             |
| BUKA   | Negatif | Trading    | Positif    | Hold        | 218         | 212     | 208    | 222        | 228    | 205             |
| CPIN   | Positif | OverBought | Positif    | Hold        | 5,425       | 5,400   | 5,325  | 5,500      | 5,525  | 5,250           |
| EMTK   | Positif | Trading    | Positif    | Spec. Buy   | 745         | 715     | 695    | 765        | 795    | 680             |
| ESSA   | Negatif | OverBought | Positif    | Sell        | 685         | 660     | 645    | 700        | 725    | 635             |
| EXCL   | Negatif | Trading    | Positif    | Hold        | 2,040       | 2,015   | 1,990  | 2,065      | 2,090  | 1,960           |
| GOTO   | Positif | Trading    | Negatif    | Hold        | 108         | 105     | 104    | 109        | 112    | 102             |
| HRUM   | Negatif | OverBought | Positif    | Sell        | 1,610       | 1,595   | 1,575  | 1,630      | 1,645  | 1,550           |
| ICBP   | Positif | Trading    | Negatif    | Hold        | 11,500      | 11,375  | 11,275 | 11,600     | 11,725 | 11,100          |
| INCO   | Negatif | Trading    | Negatif    | Sell        | 6,400       | 6,325   | 6,225  | 6,500      | 6,575  | 6,125           |
| INDF   | Positif | Trading    | Negatif    | Hold        | 7,275       | 7,250   | 7,200  | 7,325      | 7,350  | 7,100           |
| INDY   | Negatif | Trading    | Positif    | Hold        | 2,050       | 2,030   | 2,020  | 2,060      | 2,080  | 1,990           |
| INKP   | Negatif | OverBought | Positif    | Sell        | 9,225       | 8,975   | 8,725  | 9,475      | 9,725  | 8,600           |
| INTP   | Negatif | Trading    | Positif    | Hold        | 10,175      | 10,100  | 9,950  | 10,325     | 10,400 | 9,800           |
| ITMG   | Negatif | Trading    | Positif    | Hold        | 25,600      | 25,375  | 25,250 | 25,725     | 25,950 | 24,850          |
| JPFA   | Positif | OverBought | Positif    | Hold        | 1,360       | 1,340   | 1,330  | 1,370      | 1,390  | 1,310           |
| KLBF   | Negatif | Trading    | Negatif    | Sell        | 2,015       | 2,000   | 1,980  | 2,035      | 2,050  | 1,950           |
| MDKA   | Negatif | Trading    | Positif    | Hold        | 3,360       | 3,300   | 3,250  | 3,410      | 3,470  | 3,200           |
| MEDC   | Negatif | Trading    | Positif    | Hold        | 905         | 895     | 875    | 925        | 935    | 865             |
| PGAS   | Negatif | Trading    | Positif    | Hold        | 1,345       | 1,335   | 1,315  | 1,365      | 1,375  | 1,295           |
| PTBA   | Negatif | Oversold   | Negatif    | Specu. Buy  | 2,760       | 2,745   | 2,720  | 2,785      | 2,800  | 2,675           |
| SCMA   | Negatif | Trading    | Positif    | Hold        | 171         | 167     | 164    | 174        | 178    | 161             |
| SIDO   | Negatif | Trading    | Positif    | Hold        | 740         | 730     | 715    | 755        | 765    | 705             |
| SMGR   | Negatif | OverBought | Positif    | Sell        | 6,500       | 6,425   | 6,350  | 6,575      | 6,650  | 6,250           |
| SRTG   | Negatif | Trading    | Positif    | Hold        | 1,755       | 1,735   | 1,720  | 1,770      | 1,790  | 1,695           |
| TBIG   | Negatif | Trading    | Negatif    | Sell        | 1,995       | 1,990   | 1,985  | 2,000      | 2,005  | 1,955           |
| TINS   | Negatif | Trading    | Positif    | Hold        | 955         | 950     | 940    | 965        | 970    | 925             |
| TLKM   | Positif | Trading    | Negatif    | Hold        | 3,970       | 3,945   | 3,930  | 3,985      | 4,010  | 3,870           |
| TOWR   | Negatif | OverBought | Positif    | Sell        | 1,095       | 1,085   | 1,075  | 1,105      | 1,115  | 1,060           |
| TPIA   | Negatif | Trading    | Positif    | Hold        | 2,070       | 2,055   | 2,040  | 2,085      | 2,100  | 2,005           |
| UNTR   | Negatif | Trading    | Positif    | Hold        | 24,275      | 24,100  | 23,875 | 24,500     | 24,675 | 23,525          |
| UNVR   | Positif | Trading    | Negatif    | Hold        | 4,260       | 4,235   | 4,220  | 4,275      | 4,300  | 4,155           |

## OUR TEAM

**Sukarno Alatas**

Head of Equity Research

[sukarno@kiwoom.co.id](mailto:sukarno@kiwoom.co.id) | 021 5010 5800

**Michelle Abadi**

Associate

[michelle@kiwoom.co.id](mailto:michelle@kiwoom.co.id) | 021 5010 5800

**Abdul Azis Setyo Wibowo**

Equity Research Analyst

[azis@kiwoom.co.id](mailto:azis@kiwoom.co.id) | 021 5010 5800

**Dali Fikriana**

Research Intern

[dali@kiwoom.co.id](mailto:dali@kiwoom.co.id) | 021 5010 5800



### OTHER DISCLOSURES

All Kiwoom's research reports made available to clients are simultaneously available on our own website <http://www.kiwoom.co.id/>. Not all research content is redistributed, e-mailed or made available to third-party aggregators. For all research reports available on a particular stock, please contact your sales representative. Any data discrepancies in this report could be the result of different calculations and/or adjustments.

**DISCLAIMER** This report has been prepared and issued by PT Kiwoom Sekuritas Indonesia. Information has been obtained from sources believed to be reliable but Kiwoom Securities do not warrant its completeness or accuracy. Forward-looking information or statements in this report contain information that is based on forecast of future results, estimates of amounts not yet determinable, assumptions, and therefore involve known and unknown risks and uncertainties which may cause the actual results, performance or achievements of their subject matter to be materially different from current expectations.

To the fullest extent allowed by law, PT Kiwoom Sekuritas Indonesia shall not be liable for any direct, indirect or consequential losses, loss of profits, damages, costs or expenses incurred or suffered by any person or organization arising from reliance on or use of any information contained on this report. The information that we provide should not be construed in any manner whatsoever as, personalized advice.

No mention of a particular security in this report constitutes a recommendation to buy, sell or hold that or any security, or that any particular security, portfolio of securities, transaction or investment strategy is suitable for any specific person. This report is being supplied to you solely for your information and may not be reproduced by, further distributed to or published in whole or in part by, any other person.