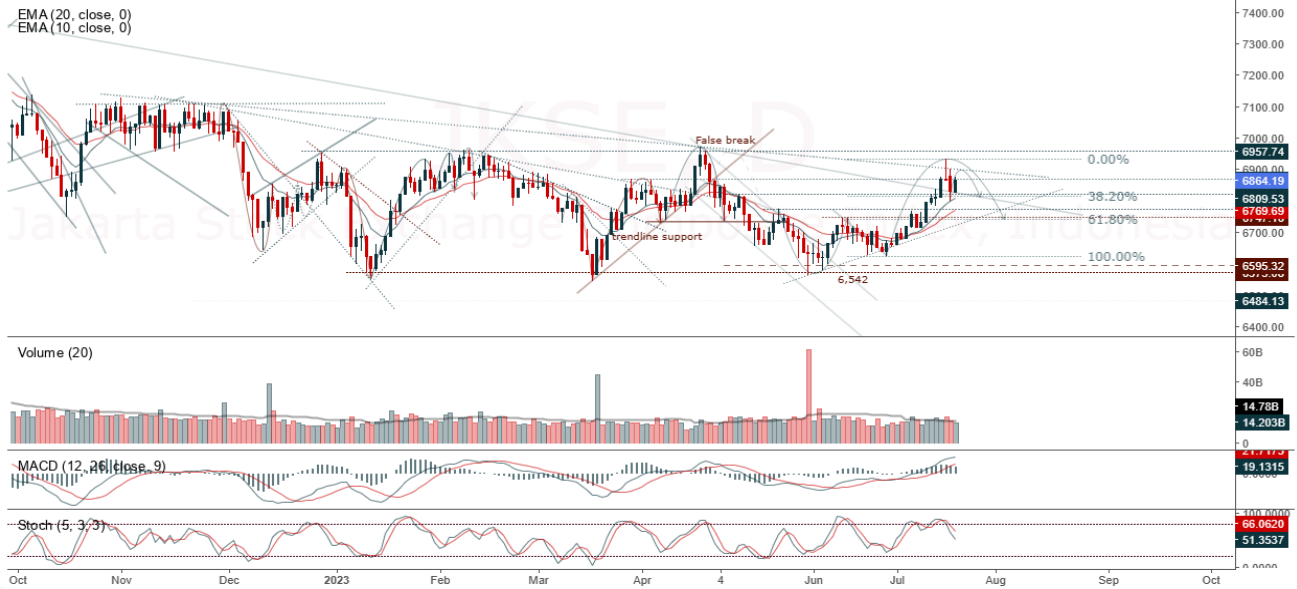


**JCI Range Today 6,810 – 6,827 (Support), 6,902 – 6,920 (Resistance)**

Jakarta Stock Exchange Composite Index, Indonesia, Jakarta:JKSE, D

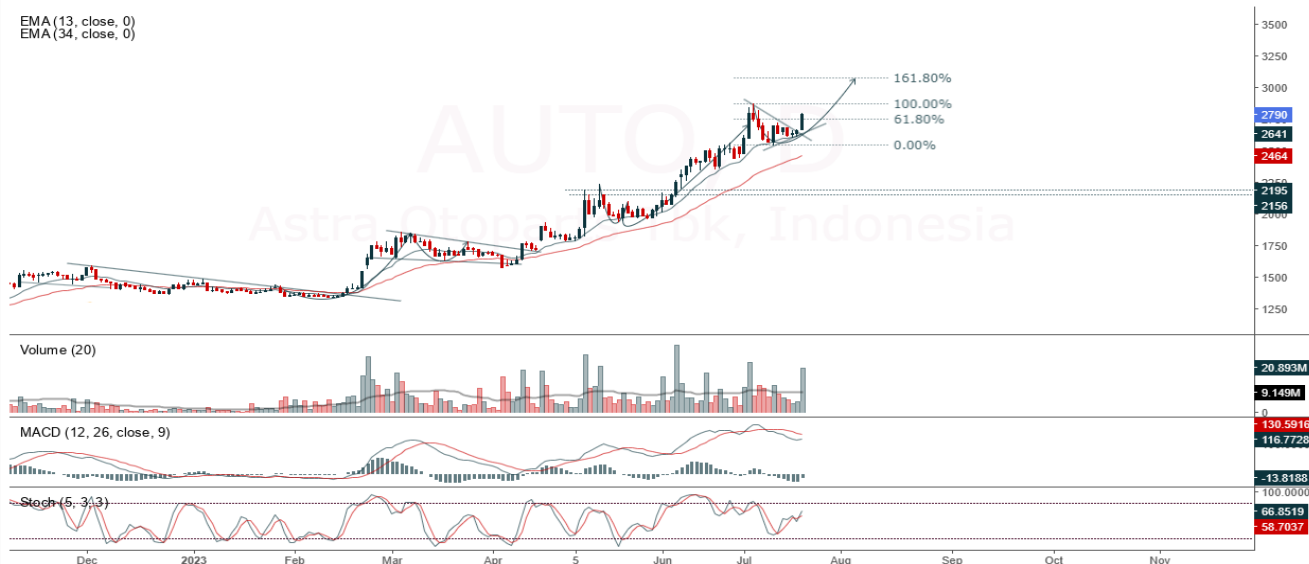


JCI closed higher with a bullish candle. Stochastic indicator is bearish, MACD histogram is moving positive (bullish line) and volume is decreasing. If it moves bearish again, JCI is expected to weaken again to the support range of 6,810 – 6,827. If JCI is able to move bullish, there is a chance for JCI to go to the resistance at the range of 6,902 – 6,920.

## AUTO

Astra Otoparts Tbk, Indonesia, Jakarta:AUTO, D

EMA (13, close, 0)  
EMA (34, close, 0)



**(AUTO)** The price closed higher and broke up to the bullish pennant pattern. The price has the opportunity to strengthen to test the nearest resistance. Stochastic indicator is bullish, MACD histogram is moving positive (bullish line) and volume is increasing. Confirmation to buy if the next candle is bullish again or buy on support if it goes down first. We suggest being careful if it fails to stay above the support level. **(Trading Buy)**

### TRADING STRATEGY:

1. Target Price: The price has a bullish opportunity to test the resistance level 2,840. If it breaks level 2,840 then the price will go to level 2,870. We recommend to be careful if the price fails to break through or turn around the support area.

2. Stop Loss: To minimize the risk of loss, we recommend placing a stop loss at level 2,710.

Entry Buy : 2,750 – 2,790  
Target Price : 2,840 – 2,870  
Support : 2,720 – 2750  
Cutloss : 2,710

**BSDE**

Bumi Serpong Damai Tbk, Indonesia, Jakarta:BSDE, D

EMA (13, close, 0)  
EMA (34, close, 0)



**(BSDE)** The price closed higher with a bullish candle. The price has the opportunity to test the nearest resistance again. Stochastic indicator is bullish, MACD histogram is moving positive again (bullish line) and volume is increasing. Confirmation to buy if the next candle is bullish again or buy on support if it goes down first. We suggest being careful if it fails to stay above the support level. **(Trading Buy)**

**TRADING STRATEGY:**

1. Target Price: The price has a bullish opportunity to test the resistance level 1,205. If it breaks level 1,205 then the price will go to level 1,225. We recommend to be careful if the price fails to break through or turn around the support area.

2. Stop Loss: To minimize the risk of loss, we recommend placing a stop loss at level 1,140.

Entry Buy : 1,160 – 1,180  
Target Price : 1,205 – 1,225  
Support : 1,145 – 1,160  
Cutloss : 1,140

**BTPS**

Bank Tabungan Pensiunan Nasional Syariah PT, Indonesia, Jakarta:BTPS, D



**(BTPS)** The price closed higher and broke up to the resistance. The price has the opportunity to continue strengthening to the next resistance. Stochastic indicator is bullish, MACD histogram is moving positive (golden cross line) and volume is increasing. Confirmation to buy if the next candle is bullish again or buy on support if it goes down first. We suggest being careful if it fails to stay above the support level. **(Trading Buy)**

**TRADING STRATEGY:**

1. Target Price: The price has a bullish opportunity to test the resistance level 2,370. If it breaks level 2,370 then the price will go to level 2,400. We recommend to be careful if the price fails to break through or turn around the support area.
2. Stop Loss: To minimize the risk of loss, we recommend placing a stop loss at level 2,250.

Entry Buy : 2,280 – 2,320  
 Target Price : 2,370 – 2,400  
 Support : 2,260 – 2,280  
 Cutloss : 2,250

**WOOD**

Integra Indocabinet Tbk PT, Indonesia, Jakarta:WOOD, D



**(WOOD)** The price closed higher with a bullish candle. The price has the opportunity to continue strengthening to the nearest resistance. Stochastic indicator is bullish, MACD histogram is moving positive (bullish line) and volume is increasing. Confirmation to buy if the next candle is bullish again or buy on support if it goes down first. We suggest being careful if it fails to stay above the support level. **(Trading Buy)**

**TRADING STRATEGY:**

- 1.Target Price: The price has a bullish opportunity to test the resistance level 450. If it breaks level 450 then the price will go to level 454. We recommend to be careful if the price fails to break through or turn around the support area.
2. Stop Loss: To minimize the risk of loss, we recommend placing a stop loss at level 426.

Entry Buy : 432 – 440  
Target Price : 450 – 454  
Support : 428– 432  
Cutloss : 426

**Forecast – Technical Analysis**

Ticker	MA5	RSI Rec	MACD Trend	Recomm.	Pivot Point	Support		Resistance		Stop Loss Level
						1	2	1	2	
JCI	Negatif	OverBought	Positif	Sell	6,850	6,825	6,800	6,875	6,900	6,700
ACES	Negatif	OverBought	Positif	Sell	735	675	635	775	835	625
ADRO	Positif	Trading	Positif	Spec. Buy	2,365	2,345	2,335	2,375	2,395	2,300
AKRA	Positif	Trading	Negatif	Hold	1,395	1,385	1,375	1,405	1,415	1,355
AMRT	Positif	Trading	Positif	Spec. Buy	2,785	2,750	2,715	2,820	2,855	2,675
ANTM	Negatif	Trading	Positif	Hold	1,995	1,980	1,965	2,010	2,025	1,935
ARTO	Positif	Trading	Negatif	Hold	3,040	2,995	2,970	3,065	3,110	2,925
ASII	Positif	Oversold	Negatif	Spec. Buy	6,525	6,500	6,400	6,625	6,650	6,300
BBCA	Positif	Trading	Positif	Spec. Buy	9,175	9,125	9,075	9,225	9,275	8,950
BBNI	Positif	Trading	Negatif	Hold	9,000	8,925	8,875	9,050	9,125	8,725
BBRI	Negatif	OverBought	Positif	Sell	5,600	5,550	5,500	5,650	5,700	5,425
BBTN	Negatif	OverBought	Positif	Sell	1,370	1,365	1,355	1,380	1,385	1,335
BMRI	Negatif	Trading	Positif	Hold	5,475	5,400	5,325	5,550	5,625	5,250
BRIS	Positif	Trading	Negatif	Hold	1,680	1,660	1,650	1,690	1,710	1,625
BRPT	Negatif	Trading	Positif	Hold	775	770	765	780	785	755
BUKA	Negatif	OverBought	Positif	Sell	238	231	228	241	248	224
CPIN	Positif	Trading	Negatif	Hold	5,275	5,175	5,075	5,375	5,475	4,995
EMTK	Negatif	Trading	Positif	Hold	760	735	720	775	800	710
ESSA	Negatif	OverBought	Positif	Sell	690	675	650	715	730	640
EXCL	Positif	Trading	Negatif	Hold	2,035	1,985	1,930	2,090	2,140	1,900
GOTO	Negatif	Trading	Positif	Hold	115	114	113	116	117	111
HRUM	Positif	Trading	Negatif	Hold	1,520	1,500	1,480	1,540	1,560	1,460
ICBP	Negatif	OverBought	Positif	Sell	11,575	11,425	11,175	11,825	11,975	11,025
INCO	Negatif	Trading	Positif	Hold	6,525	6,475	6,400	6,600	6,650	6,300
INDF	Positif	Trading	Negatif	Hold	7,325	7,275	7,200	7,400	7,450	7,100
INDY	Negatif	Trading	Positif	Hold	2,050	2,040	2,030	2,060	2,070	2,000
INKP	Positif	Trading	Negatif	Hold	8,900	8,700	8,575	9,025	9,225	8,425
INTP	Negatif	Trading	Positif	Hold	10,225	10,125	10,000	10,350	10,450	9,850
ITMG	Negatif	Trading	Positif	Hold	25,525	25,250	25,125	25,650	25,925	24,750
JPFA	Negatif	OverBought	Negatif	Strong Sell	1,360	1,355	1,345	1,370	1,375	1,325
KLBF	Negatif	Trading	Positif	Hold	1,975	1,945	1,925	1,995	2,025	1,895
MDKA	Positif	Trading	Positif	Spec. Buy	3,265	3,190	3,115	3,340	3,415	3,070
MEDC	Negatif	Trading	Positif	Hold	930	915	900	945	960	885
PGAS	Negatif	Trading	Positif	Hold	1,365	1,360	1,350	1,375	1,380	1,330
PTBA	Negatif	Oversold	Negatif	Specu. Buy	2,775	2,755	2,745	2,785	2,805	2,700
SCMA	Positif	Trading	Positif	Spec. Buy	171	170	169	172	173	166
SIDO	Positif	Oversold	Positif	Buy	705	685	670	720	740	655
SMGR	Negatif	OverBought	Positif	Sell	6,750	6,675	6,625	6,800	6,875	6,525
SRTG	Positif	Trading	Negatif	Hold	1,680	1,645	1,610	1,715	1,750	1,585
TBIG	Positif	Oversold	Negatif	Spec. Buy	1,965	1,950	1,945	1,970	1,985	1,915
TINS	Negatif	Trading	Positif	Hold	990	985	975	1,000	1,005	960
TLKM	Positif	Oversold	Negatif	Spec. Buy	3,835	3,810	3,785	3,860	3,885	3,730
TOWR	Positif	Trading	Negatif	Hold	1,045	1,035	1,030	1,050	1,060	1,010
TPIA	Negatif	Trading	Positif	Hold	2,055	2,035	2,025	2,065	2,085	1,990
UNTR	Negatif	Trading	Positif	Hold	24,450	24,300	24,100	24,650	24,800	23,725
UNVR	Negatif	Trading	Positif	Hold	4,240	4,210	4,180	4,270	4,300	4,115

## OUR TEAM

**Sukarno Alatas**

Head of Equity Research

[sukarno@kiwoom.co.id](mailto:sukarno@kiwoom.co.id) | 021 5010 5800

**Michelle Abadi**

Associate

[michelle@kiwoom.co.id](mailto:michelle@kiwoom.co.id) | 021 5010 5800

**Abdul Azis Setyo Wibowo**

Equity Research Analyst

[azis@kiwoom.co.id](mailto:azis@kiwoom.co.id) | 021 5010 5800

**Dali Fikriana**

Research Intern

[dali@kiwoom.co.id](mailto:dali@kiwoom.co.id) | 021 5010 5800



### OTHER DISCLOSURES

All Kiwoom's research reports made available to clients are simultaneously available on our own website <http://www.kiwoom.co.id/>. Not all research content is redistributed, e-mailed or made available to third-party aggregators. For all research reports available on a particular stock, please contact your sales representative. Any data discrepancies in this report could be the result of different calculations and/or adjustments.

**DISCLAIMER** This report has been prepared and issued by PT Kiwoom Sekuritas Indonesia. Information has been obtained from sources believed to be reliable but Kiwoom Securities do not warrant its completeness or accuracy. Forward-looking information or statements in this report contain information that is based on forecast of future results, estimates of amounts not yet determinable, assumptions, and therefore involve known and unknown risks and uncertainties which may cause the actual results, performance or achievements of their subject matter to be materially different from current expectations.

To the fullest extent allowed by law, PT Kiwoom Sekuritas Indonesia shall not be liable for any direct, indirect or consequential losses, loss of profits, damages, costs or expenses incurred or suffered by any person or organization arising from reliance on or use of any information contained on this report. The information that we provide should not be construed in any manner whatsoever as, personalized advice.

No mention of a particular security in this report constitutes a recommendation to buy, sell or hold that or any security, or that any particular security, portfolio of securities, transaction or investment strategy is suitable for any specific person. This report is being supplied to you solely for your information and may not be reproduced by, further distributed to or published in whole or in part by, any other person.