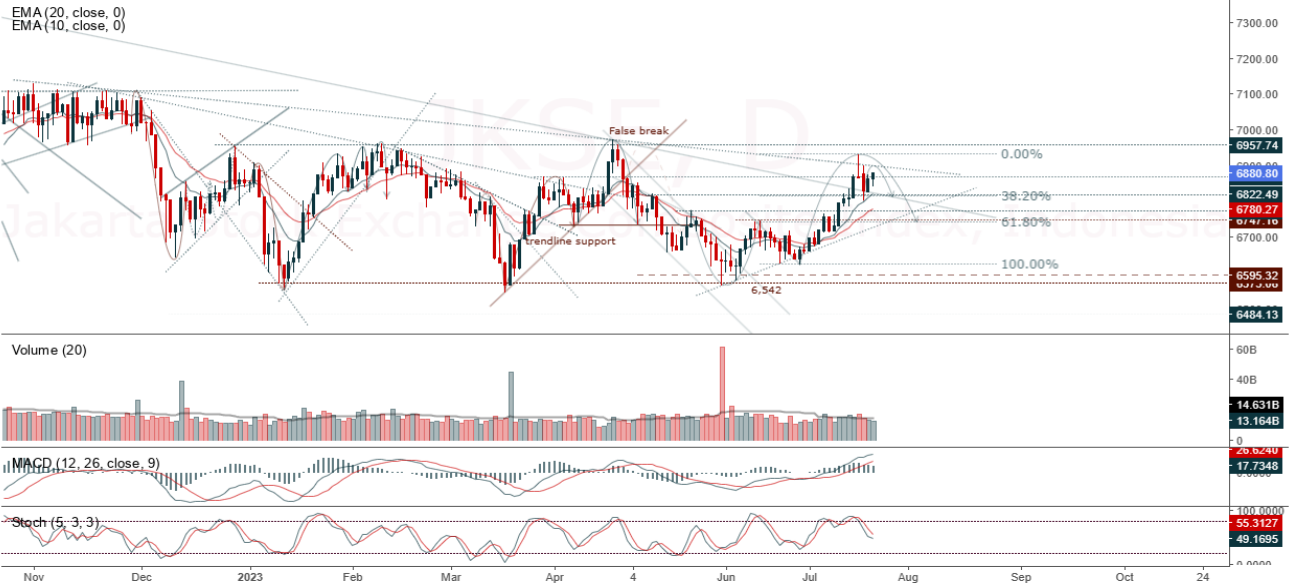


**JCI Range Today 6,827 – 6,837 (Support), 6,902 – 6,931 (Resistance)**

Jakarta Stock Exchange Composite Index, Indonesia, Jakarta:JKSE, D

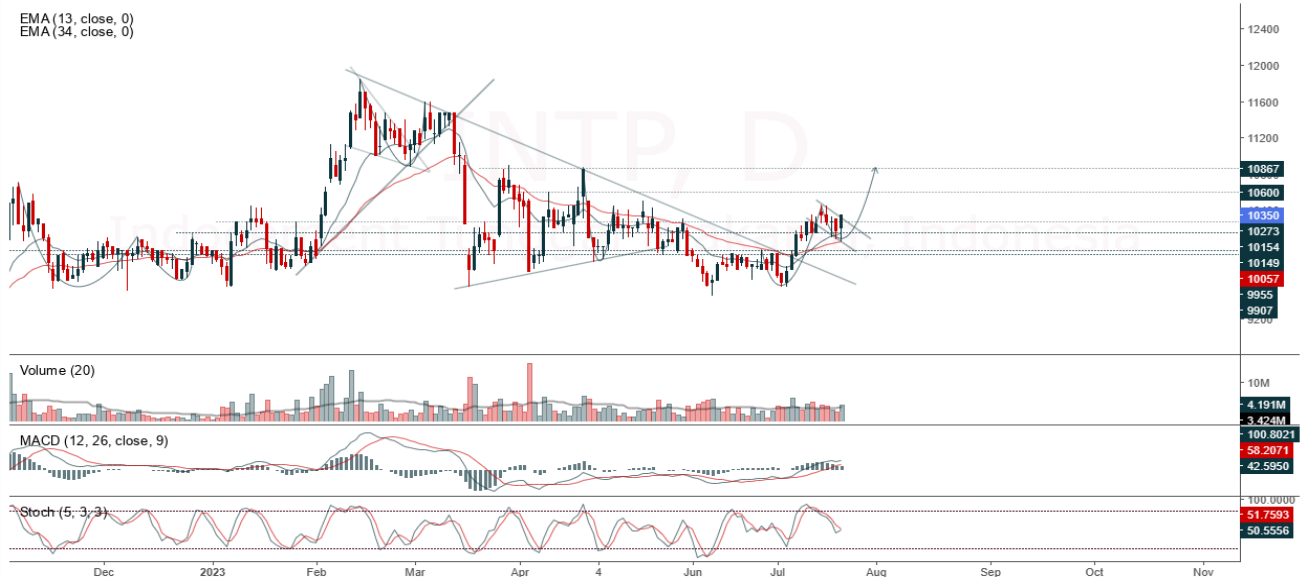


JCI closed higher with a bullish candle. Stochastic indicator is bearish, MACD histogram is moving positive (bullish line) and volume is increasing. If it moves bearish again, JCI is expected to weaken again to the support range of 6,827 – 6,837. If JCI is able to move bullish, there is a chance for JCI to go to the resistance at the range of 6,902 – 6,931.

## INTP

Indocement Tunggal Prakarsa, Indonesia, Jakarta:INTP, D

EMA (13, close, 0)  
EMA (34, close, 0)



**(INTP)** The price closed higher and broke up to the bullish pennant pattern. The price has the opportunity to strengthen to test the nearest resistance. Stochastic indicator is bullish, MACD histogram is moving positive (bullish line) and volume is increasing. Confirmation to buy if the next candle is bullish again or buy on support if it goes down first. We suggest being careful if it fails to stay above the support level. **(Trading Buy)**

### TRADING STRATEGY:

1. Target Price: The price has a bullish opportunity to test the resistance level 10,600. If it breaks level 10,600 then the price will go to level 10,650. We recommend to be careful if the price fails to break through or turn around the support area.

2. Stop Loss: To minimize the risk of loss, we recommend placing a stop loss at level 10,150.

Entry Buy : 10,275 – 10,350  
Target Price : 10,600 – 10,650  
Support : 10,175 - 10,225  
Cutloss : 10,150

**LSIP**

Perusahaan Perkebunan London Sumatra Indonesia Tbk PT, Indonesia, Jakarta:LSIP, D

EMA (13, close, 0)  
EMA (34, close, 0)



**(LSIP)** The price closed higher with a bullish candle. The price has the opportunity to test the nearest resistance again. Stochastic indicator is bullish, MACD histogram is moving positive again (bullish line) and volume is increasing. Confirmation to buy if the next candle is bullish again (buy on break at level of 1,120) or buy on support if it goes down first. We suggest being careful if it fails to stay above the support level. **(Buy on break or Trading buy)**

**TRADING STRATEGY:**

1. Target Price: The price has a bullish opportunity to test the resistance level 1,135. If it breaks level 1,135 then the price will go to level 1,145. We recommend to be careful if the price fails to break through or turn around the support area.

2. Stop Loss: To minimize the risk of loss, we recommend placing a stop loss at level 1,075.

Entry Buy : 1,100 – 1,110  
Target Price : 1,135 – 1,145  
Support : 1,080 – 1,090  
Cutloss : 1,075

## MIKA

Mitra Keluarga Karyasehat Tbk PT, Indonesia, Jakarta:MIKA, D

EMA (13, close, 0)  
EMA (34, close, 0)



**(MIKA)** The price closed higher and broke up to the resistance. The price has the opportunity to continue strengthening to the next resistance. Stochastic indicator is bullish, MACD histogram is moving positive (golden cross line) and volume is increasing. Confirmation to buy if the next candle is bullish again or buy on support if it goes down first. We suggest being careful if it fails to stay above the support level. **(Trading Buy)**

### TRADING STRATEGY:

1. Target Price: The price has a bullish opportunity to test the resistance level 3,070. If it breaks level 3,070 then the price will go to level 3,100. We recommend to be careful if the price fails to break through or turn around the support area.

2. Stop Loss: To minimize the risk of loss, we recommend placing a stop loss at level 2,910.

Entry Buy : 2,940 – 3,000  
Target Price : 3,070 – 3,100  
Support : 2,920 – 2,940  
Cutloss : 2,910

**TOWR**

Sarana Menara Nusantara Tbk, Indonesia, Jakarta:TOWR, D

EMA (13, close, 0)  
EMA (34, close, 0)



**(TOWR)** The price closed higher with a bullish candle. The price has the opportunity to continue strengthening to the nearest resistance. Stochastic golden cross indicator, MACD histogram is moving in the positive direction (bullish line) and volume is increasing. Confirmation to buy if the next candle is bullish again or buy on support if it goes down first. We suggest being careful if it fails to stay above the support level. **(Trading Buy)**

**TRADING STRATEGY:**

- 1.Target Price: The price has a bullish opportunity to test the resistance level 1,075. If it breaks level 1,075 then the price will go to level 1,090. We recommend to be careful if the price fails to break through or turn around the support area.
2. Stop Loss: To minimize the risk of loss, we recommend placing a stop loss at level 1,035.

Entry Buy : 1,050 – 1,060  
 Target Price : 1,075 – 1,090  
 Support : 1,040 – 1,050  
 Cutloss : 1,035

**Forecast – Technical Analysis**

Ticker	MA5	RSI Rec	MACD Trend	Recomm.	Pivot Point	Support		Resistance		Stop Loss Level
						1	2	1	2	
JCI	Negatif	OverBought	Positif	Sell	6,875	6,850	6,825	6,900	6,900	6,725
ACES	Negatif	Trading	Positif	Hold	700	690	675	715	725	665
ADRO	Negatif	Trading	Positif	Hold	2,405	2,375	2,355	2,425	2,455	2,315
AKRA	Positif	Trading	Negatif	Hold	1,385	1,370	1,350	1,405	1,420	1,330
AMRT	Negatif	OverBought	Positif	Sell	2,840	2,800	2,760	2,880	2,920	2,720
ANTM	Positif	Trading	Positif	Spec. Buy	1,990	1,975	1,965	2,000	2,015	1,935
ARTO	Positif	Trading	Negatif	Hold	3,030	3,005	2,980	3,055	3,080	2,935
ASII	Positif	Oversold	Negatif	Spec. Buy	6,475	6,400	6,325	6,550	6,625	6,225
BBCA	Negatif	Trading	Positif	Hold	9,150	9,125	9,100	9,175	9,200	8,975
BBNI	Negatif	Trading	Negatif	Sell	9,050	9,025	9,000	9,075	9,100	8,850
BBRI	Negatif	OverBought	Positif	Sell	5,600	5,600	5,550	5,650	5,650	5,475
BBTN	Negatif	OverBought	Positif	Sell	1,355	1,345	1,320	1,380	1,390	1,300
BMRI	Negatif	OverBought	Positif	Sell	5,525	5,500	5,400	5,625	5,650	5,325
BRIS	Positif	Trading	Negatif	Hold	1,685	1,680	1,670	1,695	1,700	1,645
BRPT	Negatif	Trading	Positif	Hold	770	765	750	785	790	740
BUKA	Negatif	Trading	Positif	Hold	230	219	210	239	250	206
CPIN	Positif	Trading	Negatif	Hold	5,150	5,075	4,895	5,325	5,400	4,820
EMTK	Negatif	Trading	Positif	Hold	730	715	690	755	770	680
ESSA	Negatif	Trading	Positif	Hold	660	635	605	690	715	595
EXCL	Negatif	Trading	Positif	Hold	2,070	2,045	2,030	2,085	2,110	1,995
GOTO	Negatif	Trading	Positif	Hold	113	112	110	115	116	108
HRUM	Negatif	Trading	Negatif	Sell	1,550	1,535	1,525	1,560	1,575	1,500
ICBP	Positif	Trading	Positif	Spec. Buy	11,500	11,425	11,325	11,600	11,675	11,150
INCO	Positif	Trading	Positif	Spec. Buy	6,575	6,500	6,425	6,650	6,725	6,325
INDF	Positif	Trading	Negatif	Hold	7,325	7,275	7,225	7,375	7,425	7,100
INDY	Negatif	Trading	Positif	Hold	2,080	2,055	2,040	2,095	2,120	2,005
INKP	Positif	OverBought	Negatif	Sell	8,925	8,825	8,650	9,100	9,200	8,500
INTP	Negatif	Trading	Positif	Hold	10,250	10,125	9,925	10,450	10,575	9,775
ITMG	Negatif	Trading	Positif	Hold	26,200	25,550	24,925	26,825	27,475	24,550
JPFA	Positif	Trading	Negatif	Hold	1,325	1,290	1,240	1,375	1,410	1,220
KLBF	Positif	Oversold	Negatif	Spec. Buy	1,955	1,940	1,910	1,985	2,000	1,880
MDKA	Positif	Trading	Positif	Spec. Buy	3,355	3,315	3,285	3,385	3,425	3,235
MEDC	Negatif	Trading	Positif	Hold	945	935	920	960	970	905
PGAS	Negatif	Trading	Positif	Hold	1,380	1,370	1,360	1,390	1,400	1,340
PTBA	Negatif	Oversold	Negatif	Specu. Buy	2,785	2,770	2,755	2,800	2,815	2,715
SCMA	Positif	Trading	Negatif	Hold	170	169	166	173	174	164
SIDO	Positif	Oversold	Negatif	Spec. Buy	695	690	685	700	705	675
SMGR	Negatif	OverBought	Positif	Sell	6,800	6,550	6,250	7,100	7,350	6,150
SRTG	Negatif	Trading	Negatif	Sell	1,700	1,680	1,660	1,720	1,740	1,635
TBIG	Negatif	Trading	Negatif	Sell	1,975	1,970	1,960	1,985	1,990	1,930
TINS	Negatif	OverBought	Positif	Sell	990	975	965	1,000	1,015	950
TLKM	Positif	Oversold	Negatif	Spec. Buy	3,855	3,835	3,825	3,865	3,885	3,765
TOWR	Positif	Trading	Negatif	Hold	1,050	1,035	1,020	1,065	1,080	1,005
TPIA	Positif	Trading	Positif	Spec. Buy	2,045	2,035	2,025	2,055	2,065	1,990
UNTR	Negatif	Trading	Positif	Hold	24,425	24,350	24,200	24,575	24,650	23,825
UNVR	Negatif	Trading	Positif	Hold	4,255	4,220	4,185	4,290	4,325	4,120

## OUR TEAM

**Sukarno Alatas**

Head of Equity Research

[sukarno@kiwoom.co.id](mailto:sukarno@kiwoom.co.id) | 021 5010 5800**Michelle Abadi**

Associate

[michelle@kiwoom.co.id](mailto:michelle@kiwoom.co.id) | 021 5010 5800**Abdul Azis Setyo Wibowo**

Equity Research Analyst

[azis@kiwoom.co.id](mailto:azis@kiwoom.co.id) | 021 5010 5800**Dali Fikriana**

Research Intern

[dali@kiwoom.co.id](mailto:dali@kiwoom.co.id) | 021 5010 5800**OTHER DISCLOSURES**

All Kiwoom's research reports made available to clients are simultaneously available on our own website <http://www.kiwoom.co.id/>. Not all research content is redistributed, e-mailed or made available to third-party aggregators. For all research reports available on a particular stock, please contact your sales representative. Any data discrepancies in this report could be the result of different calculations and/or adjustments.

**DISCLAIMER** This report has been prepared and issued by PT Kiwoom Sekuritas Indonesia. Information has been obtained from sources believed to be reliable but Kiwoom Securities do not warrant its completeness or accuracy. Forward-looking information or statements in this report contain information that is based on forecast of future results, estimates of amounts not yet determinable, assumptions, and therefore involve known and unknown risks and uncertainties which may cause the actual results, performance or achievements of their subject matter to be materially different from current expectations.

To the fullest extent allowed by law, PT Kiwoom Sekuritas Indonesia shall not be liable for any direct, indirect or consequential losses, loss of profits, damages, costs or expenses incurred or suffered by any person or organization arising from reliance on or use of any information contained on this report. The information that we provide should not be construed in any manner whatsoever as, personalized advice.

No mention of a particular security in this report constitutes a recommendation to buy, sell or hold that or any security, or that any particular security, portfolio of securities, transaction or investment strategy is suitable for any specific person. This report is being supplied to you solely for your information and may not be reproduced by, further distributed to or published in whole or in part by, any other person.