

**JCI Range Today 6,906 – 6,957 (Support), 6,963 – 7,020 (Resistance)**



**Jakarta Composite Index** closed higher with a bullish candle. Primary trend is sideways, secondary trend is uptrend, and short swing is sideways in the accumulation phase. The stochastic line indicator is bullish, the MACD histogram is moving gently (sloping line) and volume is increasing. Bearish scenario: If it moves bearish again, JCI is expected to weaken again to the support range of 6,906 – 6,957. Bullish scenario: If JCI is able to move bullish, JCI has the opportunity to go to resistance at the range of 6,963 – 7,020.

**Stock Pick Today : AUTO, BBNI, BIRD, PGEO.**

## AUTO

Astra Otoparts Tbk, Indonesia, Jakarta:AUTO, D

EMA (13, close, 0)  
EMA (34, close, 0)



**(AUTO)** The price closed stronger with a bullish candle. Price has the opportunity to strengthen to test the nearest resistance. The stochastic indicator is bearish, the MACD histogram is moving gently (sloping line) and volume is increasing significantly. Confirmation to buy if the next candle returns bullish or buy on support if it goes down first. We suggest to be careful if it fails to stay above the support level. **(Trading Buy)**

### TRADING STRATEGY:

1. Target Price: The price has a bullish opportunity to test the resistance level 3,220. If it breaks level 3,220 then the price will go to level 3,300. We recommend to be careful if the price fails to break through or turn around the support area.
2. Stop Loss: To minimize the risk of loss, we recommend placing a stop loss at level 3,120.

Entry Buy : 3,160 – 3,190  
Target Price : 3,220 – 3,300  
Support : 3,130 – 3,160  
Cutloss : 3,120

## BBNI

Bank Negara Indonesia Tbk, Indonesia, Jakarta:BBNI, D

EMA (13, close, 0)  
EMA (34, close, 0)



**(BBNI)** The price closed stronger with a bullish candle. Price has the opportunity to strengthen to test the nearest resistance. The golden cross stochastic indicator, MACD histogram is moving bullish (bullish line) and volume is increasing. Confirmation to buy if the next candle returns bullish or buy on support if it goes down first. Be careful if it fails to stay above the support level. **(Trading Buy)**

### TRADING STRATEGY:

1. Target Price: The price has a bullish opportunity to test the resistance level 9,525. If it breaks level 9,525 then the price will go to level 9,675. We recommend to be careful if the price fails to break through or turn around the support area.

2. Stop Loss: To minimize the risk of loss, we recommend placing a stop loss at level 9,275.

Entry Buy : 9,375 – 9,450  
Target Price : 9,525 – 9,675  
Support : 9,300 – 9,375  
Cutloss : 9,275

## BIRD

Blue Bird Tbk, Indonesia, Jakarta: BIRD, D

EMA (13, close, 0)  
EMA (34, close, 0)



**(BIRD)** The price closed stronger with a bullish candle. Price has the opportunity to strengthen to test the nearest resistance. The stochastic indicator is bullish, the MACD histogram is moving gently (sloping line) and volume is falling. Confirmation to buy if the next candle returns bullish or buy on support if it goes down first. Be careful if it fails to stay above the support level. **(Trading Buy)**

### TRADING STRATEGY:

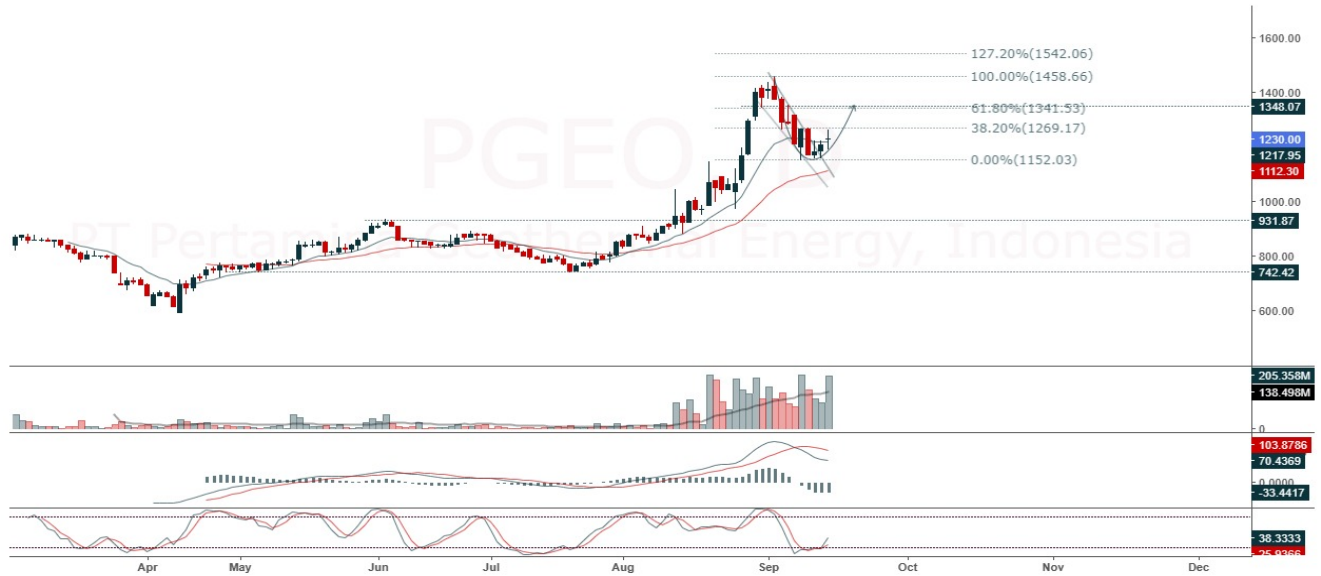
1. Target Price: The price has a bullish opportunity to test the resistance level 1,980. If it breaks level 1,980 then the price will go to level 2,020. We recommend to be careful if the price fails to break through or turn around the support area.

2. Stop Loss: To minimize the risk of loss, we recommend placing a stop loss at level 1,915.

Entry Buy : 1,940 – 1,960  
Target Price : 1,980 – 2,020  
Support : 1,920 – 1,940  
Cutloss : 1,915

**PGEO**

PT Pertamina Geothermal Energy, Indonesia, Jakarta:PGEO, D



**(PGEO)** The price closed stronger with a bullish candle. Price has the opportunity to continue strengthening to the nearest resistance. The stochastic indicator is bullish, MACD histogram is bearish (line bearish) and volume is rising. Confirmation to buy if the next candle returns bullish or buy on support if it goes down first. Be careful if it fails to stay above the support level. **(Trading Buy)**

**TRADING STRATEGY:**

1. Target Price: The price has a bullish opportunity to test the resistance level 1,245. If it breaks level 1,245 then the price will go to level 1,280. We recommend to be careful if the price fails to break through or turn around the support area.

2. Stop Loss: To minimize the risk of loss, we recommend placing a stop loss at level 1,200.

Entry Buy : 1,215 – 1,230  
 Target Price : 1,245 – 1,280  
 Support : 1,205 – 1,215  
 Cutloss : 1,200

## Forecast – Technical Analysis

Ticker	MA5	RSI Rec	MACD Trend	Recomm.	Pivot Point	Support		Resistance		Stop Loss Level
						1	2	1	2	
JCI	Positif	Trading	Negatif	Hold	6,950	6,925	6,900	6,975	6,975	6,800
ACES	Negatif	OverBought	Positif	Sell	740	735	725	750	755	715
ADRO	Negatif	OverBought	Positif	Sell	2,910	2,880	2,860	2,930	2,960	2,815
AKRA	Positif	Trading	Positif	Spec. Buy	1,475	1,460	1,445	1,490	1,505	1,425
AMRT	Positif	Trading	Positif	Spec. Buy	2,900	2,835	2,780	2,955	3,020	2,735
ANTM	Positif	Trading	Negatif	Hold	1,915	1,890	1,875	1,930	1,955	1,845
ARTO	Positif	Oversold	Negatif	Spec. Buy	2,355	2,310	2,275	2,390	2,435	2,240
ASII	Positif	Trading	Negatif	Hold	6,325	6,275	6,200	6,400	6,450	6,100
BBCA	Positif	Trading	Negatif	Hold	9,050	9,000	8,925	9,125	9,175	8,800
BBNI	Positif	Trading	Positif	Spec. Buy	9,425	9,350	9,275	9,500	9,575	9,125
BBRI	Negatif	Trading	Negatif	Sell	5,375	5,325	5,275	5,425	5,475	5,200
BBTN	Positif	Oversold	Negatif	Spec. Buy	1,235	1,230	1,220	1,245	1,250	1,205
BMRI	Negatif	Trading	Negatif	Sell	5,825	5,775	5,725	5,875	5,925	5,650
BRIS	Positif	Trading	Positif	Spec. Buy	1,660	1,650	1,635	1,675	1,685	1,610
BRPT	Positif	OverBought	Positif	Hold	1,255	1,195	1,150	1,300	1,360	1,130
BUKA	Negatif	Trading	Positif	Hold	251	243	239	255	263	235
CPIN	Positif	Trading	Negatif	Hold	5,025	4,960	4,915	5,075	5,125	4,840
EMTK	Positif	Oversold	Positif	Buy	575	570	560	585	590	555
ESSA	Negatif	Trading	Positif	Hold	745	730	720	755	770	705
EXCL	Negatif	OverBought	Positif	Sell	2,375	2,345	2,295	2,425	2,455	2,260
GGRM	Positif	Oversold	Negatif	Spec. Buy	24,275	23,900	23,725	24,450	24,825	23,375
GOTO	Positif	Oversold	Negatif	Spec. Buy	89	86	85	90	93	83
HRUM	Negatif	Trading	Negatif	Sell	1,800	1,750	1,725	1,825	1,875	1,695
ICBP	Positif	Trading	Positif	Spec. Buy	11,100	11,000	10,875	11,225	11,325	10,725
INCO	Positif	Oversold	Negatif	Spec. Buy	5,850	5,775	5,725	5,900	5,975	5,650
INDF	Positif	Trading	Positif	Spec. Buy	6,775	6,700	6,600	6,875	6,950	6,500
INDY	Negatif	Trading	Positif	Hold	2,075	2,035	2,005	2,105	2,145	1,970
INKP	Positif	Trading	Negatif	Hold	10,600	10,375	10,250	10,725	10,950	10,100
INTP	Positif	OverBought	Negatif	Sell	10,950	10,900	10,800	11,050	11,100	10,650
ITMG	Negatif	OverBought	Positif	Sell	29,100	28,600	28,225	29,475	29,975	27,800
KLBF	Positif	Oversold	Positif	Buy	1,795	1,760	1,745	1,810	1,845	1,715
MAPI	Negatif	Trading	Negatif	Sell	1,835	1,815	1,790	1,860	1,880	1,765
MDKA	Negatif	Trading	Negatif	Sell	3,160	3,140	3,120	3,180	3,200	3,075
MEDC	Negatif	OverBought	Negatif	Strong Sell	1,555	1,540	1,510	1,585	1,600	1,490
PGAS	Negatif	OverBought	Positif	Sell	1,435	1,390	1,360	1,465	1,510	1,340
PTBA	Negatif	OverBought	Positif	Sell	2,880	2,850	2,830	2,900	2,930	2,790
SCMA	Positif	Trading	Positif	Spec. Buy	163	161	159	165	167	156
SIDO	Negatif	Trading	Positif	Hold	605	600	595	610	615	585
SMGR	Positif	Trading	Negatif	Hold	7,000	6,950	6,900	7,050	7,100	6,800
SRTG	Negatif	Trading	Positif	Hold	1,700	1,680	1,655	1,725	1,745	1,630
TBIG	Positif	OverBought	Positif	Hold	2,050	2,025	2,000	2,075	2,100	1,970
TLKM	Positif	Trading	Positif	Spec. Buy	3,700	3,675	3,660	3,715	3,740	3,605
TOWR	Negatif	Trading	Positif	Hold	1,035	1,025	1,010	1,050	1,060	995
TPIA	Positif	Trading	Positif	Spec. Buy	2,200	2,105	2,020	2,285	2,380	1,985
UNTR	Positif	OverBought	Negatif	Sell	27,425	27,225	27,150	27,500	27,700	26,725
UNVR	Positif	Oversold	Positif	Buy	3,580	3,545	3,530	3,595	3,630	3,475

## OUR TEAM

**Sukarno Alatas**

Head of Equity Research

[sukarno@kiwoom.co.id](mailto:sukarno@kiwoom.co.id) | 021 5010 5800**Michelle Abadi**

Associate

[michelle@kiwoom.co.id](mailto:michelle@kiwoom.co.id) | 021 5010 5800**Abdul Azis Setyo Wibowo**

Equity Research Analyst

[azis@kiwoom.co.id](mailto:azis@kiwoom.co.id) | 021 5010 5800**Dali Fikriana**

Research Intern

[dali@kiwoom.co.id](mailto:dali@kiwoom.co.id) | 021 5010 5800**OTHER DISCLOSURES**

All Kiwoom's research reports made available to clients are simultaneously available on our own website <http://www.kiwoom.co.id/>. Not all research content is redistributed, e-mailed or made available to third-party aggregators. For all research reports available on a particular stock, please contact your sales representative. Any data discrepancies in this report could be the result of different calculations and/or adjustments.

**DISCLAIMER** This report has been prepared and issued by PT Kiwoom Sekuritas Indonesia. Information has been obtained from sources believed to be reliable but Kiwoom Securities do not warrant its completeness or accuracy. Forward-looking information or statements in this report contain information that is based on forecast of future results, estimates of amounts not yet determinable, assumptions, and therefore involve known and unknown risks and uncertainties which may cause the actual results, performance or achievements of their subject matter to be materially different from current expectations.

To the fullest extent allowed by law, PT Kiwoom Sekuritas Indonesia shall not be liable for any direct, indirect or consequential losses, loss of profits, damages, costs or expenses incurred or suffered by any person or organization arising from reliance on or use of any information contained on this report. The information that we provide should not be construed in any manner whatsoever as, personalized advice.

No mention of a particular security in this report constitutes a recommendation to buy, sell or hold that or any security, or that any particular security, portfolio of securities, transaction or investment strategy is suitable for any specific person. This report is being supplied to you solely for your information and may not be reproduced by, further distributed to or published in whole or in part by, any other person.