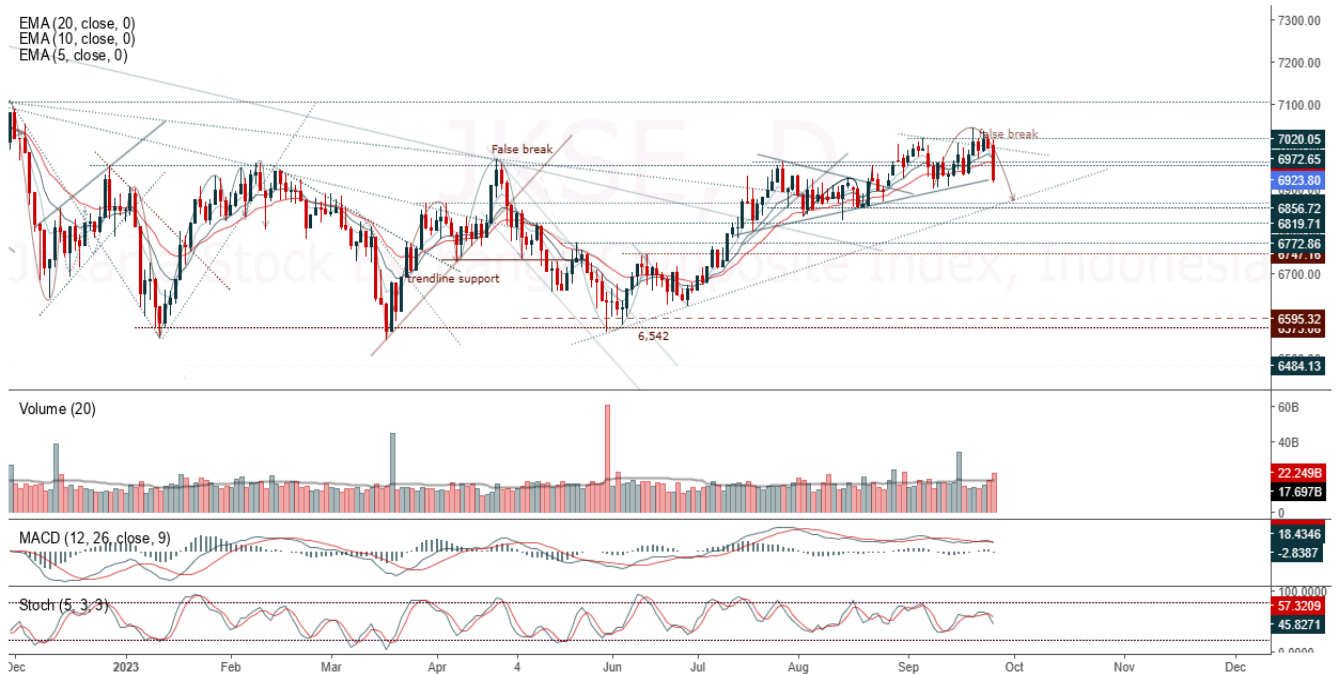


## JCI Range Today 6,860 – 6,914 (Support), 6,928 – 7,003 (Resistance)

Jakarta Stock Exchange Composite Index, Indonesia, Jakarta:JKSE, D

EMA (20, close, 0)  
EMA (10, close, 0)  
EMA (5, close, 0)



**Jakarta Composite Index** closed lower with a bearish candle. Primary trend is sideways, secondary trend is sideways, and short swing is downtrend in the distribution phase. The stochastic indicator is sloping, the MACD histogram is sloping (sloping line) and volume is increasing. Bearish scenario: If it moves bearish again, JCI is expected to weaken again to the support range of 6,860 – 6,914. Bullish scenario: If JCI is able to move bullish, JCI has the opportunity to go to resistance at the range of 6,928 – 7,003.

**Stock Pick Today : AMRT, AUTO, BMRI, JAPFA.**

## AMRT

Sumber Alfaria Trijaya Tbk, Indonesia, Jakarta:AMRT, D

EMA (13, close, 0)  
EMA (34, close, 0)



**(AMRT).** Price closed stronger with a bullish candle. Price has the opportunity to strengthen to test the nearest resistance. The stochastic indicator is bullish, the MACD histogram is sloping (sloping line) and volume is increasing. Confirmation to buy if the next candle returns bullish or buy on support if it goes down first. Be careful if it fails to stay above the support level. **(Trading Buy)**

### TRADING STRATEGY:

1. Target Price: The price has a bullish opportunity to test the resistance level 3,020. If it breaks level 3,020 then the price will go to level 3,050. We recommend to be careful if the price fails to break through or turn around the support area.

2. Stop Loss: To minimize the risk of loss, we recommend placing a stop loss at level 2,890.

Entry Buy : 2,930 – 2,960  
Target Price : 3,020 – 3,050  
Support : 2,900 – 2,930  
Cutloss : 2,890

## AUTO

Astra Otoparts Tbk, Indonesia, Jakarta:AUTO, D

EMA (13, close, 0)  
EMA (34, close, 0)



**(AUTO).** Price closed stronger with a bullish candle. Price has the opportunity to strengthen to test the nearest resistance. The stochastic indicator is oversold, the MACD histogram is sloping (sloping line) and volume is falling. Confirmation to buy if the next candle returns bullish or buy on support if it goes down first. Be careful if it fails to stay above the support level. **(Trading Buy)**

### TRADING STRATEGY:

1. Target Price: The price has a bullish opportunity to test the resistance level 3,220. If it breaks level 3,220 then the price will go to level 3,260. We recommend to be careful if the price fails to break through or turn around the support area.

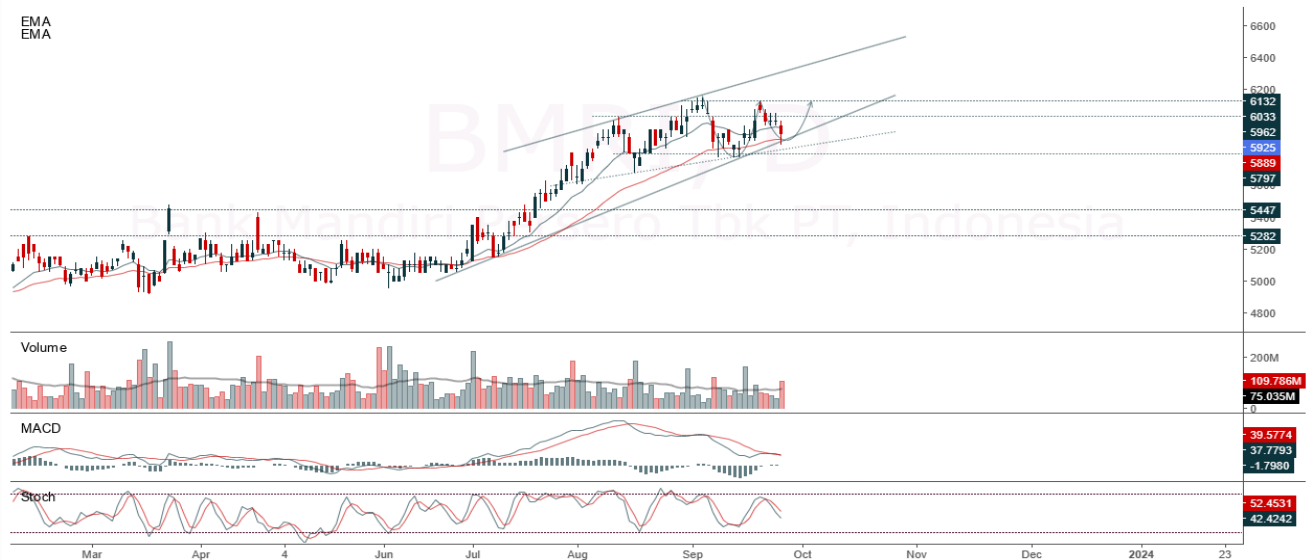
2. Stop Loss: To minimize the risk of loss, we recommend placing a stop loss at level 3,090.

Entry Buy : 3,130 – 3,160  
Target Price : 3,220 – 3,260  
Support : 3,100 – 3,130  
Cutloss : 3,090

## BMRI

Bank Mandiri Persero Tbk PT, Indonesia, Jakarta:BMRI, D

EMA  
EMA



**(BMRI).** Price closed stronger with a bullish candle. Price has the opportunity to strengthen to test the nearest resistance. The stochastic indicator is bearish, the MACD histogram is sloping (sloping line) and volume is increasing. Confirmation to buy if the next candle returns bullish or buy on support if it goes down first. Be careful if it fails to stay above the support level. **(Trading Buy)**

### TRADING STRATEGY:

1.Target Price: The price has a bullish opportunity to test the resistance level 6,050. If it breaks level 6,050 then the price will go to level 6,125. We recommend to be careful if the price fails to break through or turn around the support area.

2. Stop Loss: To minimize the risk of loss, we recommend placing a stop loss at level 5,750.

Entry Buy : 5,850 – 5,925  
Target Price : 6,050 – 6,125  
Support : 5,775 – 5,850  
Cutloss : 5,750

**JPFA**

Japfa Comfeed Indonesia Tbk, Indonesia, Jakarta:JPFA, D

EMA (13, close, 0)  
EMA (34, close, 0)



**(JPFA).** Price closed stronger with a bullish candle. Price has the opportunity to continue strengthening to the nearest resistance. The stochastic indicator is bullish, MACD histogram is sloping (sloping line) and volume is rising. Confirmation to buy if the next candle returns bullish or buy on support if it goes down first. Be careful if it fails to stay above the support level. **(Trading Buy)**

**TRADING STRATEGY:**

1.Target Price: The price has a bullish opportunity to test the resistance level 1,360. If it breaks level 1,360 then the price will go to level 1,380. We recommend to be careful if the price fails to break through or turn around the support area.

2. Stop Loss: To minimize the risk of loss, we recommend placing a stop loss at level 1,305.

Entry Buy : 1,320 – 1,335  
Target Price : 1,360 – 1,380  
Support : 1,310 – 1,320  
Cutloss : 1,305

**Forecast – Technical Analysis**

Ticker	MA5	RSI Rec	MACD Trend	Recomm.	Pivot Point	Support 1	Support 2	Resistance 1	Resistance 2	Stop Loss Level
JCI	Positif	Trading	Negatif	Hold	6,975	6,900	6,850	7,025	7,075	6,750
ACES	Negatif	OverBought	Positif	Sell	770	745	705	810	835	695
ADRO	Negatif	OverBought	Positif	Sell	2,865	2,755	2,645	2,975	3,085	2,605
AKRA	Positif	Trading	Positif	Spec. Buy	1,460	1,455	1,440	1,475	1,480	1,420
AMRT	Positif	Trading	Positif	Spec. Buy	2,950	2,920	2,900	2,970	3,000	2,855
ANTM	Positif	Trading	Negatif	Hold	1,845	1,835	1,820	1,860	1,870	1,790
ARTO	Positif	Oversold	Negatif	Spec. Buy	2,180	2,090	2,020	2,250	2,340	1,990
ASII	Positif	Trading	Negatif	Hold	6,225	6,175	6,125	6,275	6,325	6,050
BBCA	Positif	Trading	Negatif	Hold	8,975	8,950	8,900	9,025	9,050	8,775
BBNI	Positif	Trading	Positif	Spec. Buy	10,025	9,950	9,875	10,100	10,175	9,725
BBRI	Negatif	Trading	Negatif	Sell	5,225	5,200	5,150	5,275	5,300	5,075
BBTN	Positif	Oversold	Negatif	Spec. Buy	1,230	1,220	1,215	1,235	1,245	1,195
BMRI	Negatif	Trading	Negatif	Sell	5,950	5,875	5,800	6,025	6,100	5,700
BRIS	Positif	Trading	Positif	Spec. Buy	1,615	1,595	1,580	1,630	1,650	1,555
BRPT	Positif	OverBought	Positif	Hold	1,410	1,325	1,230	1,505	1,590	1,210
BUKA	Negatif	Trading	Positif	Hold	215	203	195	223	235	192
CPIN	Positif	Trading	Negatif	Hold	5,200	4,990	4,775	5,400	5,625	4,705
EMTK	Positif	Oversold	Positif	Buy	560	540	515	585	605	510
ESSA	Negatif	Trading	Positif	Hold	760	715	665	810	855	655
EXCL	Negatif	OverBought	Positif	Sell	2,375	2,315	2,275	2,415	2,475	2,240
GGRM	Positif	Oversold	Negatif	Spec. Buy	24,400	24,025	23,775	24,650	25,025	23,400
GOTO	Positif	Oversold	Negatif	Spec. Buy	89	87	84	92	94	83
HRUM	Negatif	Trading	Negatif	Sell	1,780	1,720	1,660	1,840	1,900	1,635
ICBP	Positif	Trading	Positif	Spec. Buy	11,200	11,100	10,950	11,350	11,450	10,775
INCO	Positif	Oversold	Negatif	Spec. Buy	5,625	5,525	5,425	5,725	5,825	5,350
INDF	Positif	Trading	Positif	Spec. Buy	6,750	6,700	6,650	6,800	6,850	6,550
INDY	Negatif	Trading	Positif	Hold	2,270	2,160	2,060	2,370	2,480	2,030
INKP	Positif	Trading	Negatif	Hold	11,550	11,250	11,025	11,775	12,075	10,850
INTP	Positif	OverBought	Negatif	Sell	9,925	9,750	9,525	10,150	10,325	9,400
ITMG	Negatif	OverBought	Positif	Sell	28,800	28,400	27,975	29,225	29,625	27,550
KLBF	Positif	Oversold	Positif	Buy	1,795	1,780	1,765	1,810	1,825	1,735
MAPI	Negatif	Trading	Negatif	Sell	1,840	1,815	1,795	1,860	1,885	1,765
MDKA	Negatif	Trading	Negatif	Sell	3,045	2,960	2,855	3,150	3,235	2,810
MEDC	Negatif	OverBought	Negatif	Strong Sell	1,575	1,505	1,425	1,655	1,725	1,405
PGAS	Negatif	OverBought	Positif	Sell	1,395	1,380	1,370	1,405	1,420	1,345
PTBA	Negatif	OverBought	Positif	Sell	2,840	2,805	2,770	2,875	2,910	2,725
SCMA	Positif	Trading	Positif	Spec. Buy	160	157	152	165	168	150
SIDO	Negatif	Trading	Positif	Hold	595	590	585	600	605	575
SMGR	Positif	Trading	Negatif	Hold	6,625	6,500	6,400	6,725	6,850	6,300
SRTG	Negatif	Trading	Positif	Hold	1,890	1,815	1,760	1,945	2,020	1,730
TBIG	Positif	OverBought	Positif	Hold	2,000	1,985	1,970	2,015	2,030	1,940
TLKM	Positif	Trading	Positif	Spec. Buy	3,770	3,740	3,720	3,790	3,820	3,665
TOWR	Negatif	Trading	Positif	Hold	970	955	950	975	990	935
TPIA	Positif	Trading	Positif	Spec. Buy	2,615	2,565	2,535	2,645	2,695	2,495
UNTR	Positif	OverBought	Negatif	Sell	28,025	27,625	27,250	28,400	28,800	26,825
UNVR	Positif	Oversold	Positif	Buy	3,805	3,785	3,755	3,835	3,855	3,695

## OUR TEAM

**Sukarno Alatas**

Head of Equity Research

[sukarno@kiwoom.co.id](mailto:sukarno@kiwoom.co.id) | 021 5010 5800**Michelle Abadi**

Associate

[michelle@kiwoom.co.id](mailto:michelle@kiwoom.co.id) | 021 5010 5800**Abdul Azis Setyo Wibowo**

Equity Research Analyst

[azis@kiwoom.co.id](mailto:azis@kiwoom.co.id) | 021 5010 5800**Dali Fikriana**

Research Intern

[dali@kiwoom.co.id](mailto:dali@kiwoom.co.id) | 021 5010 5800**OTHER DISCLOSURES**

All Kiwoom's research reports made available to clients are simultaneously available on our own website <http://www.kiwoom.co.id/>. Not all research content is redistributed, e-mailed or made available to third-party aggregators. For all research reports available on a particular stock, please contact your sales representative. Any data discrepancies in this report could be the result of different calculations and/or adjustments.

**DISCLAIMER** This report has been prepared and issued by PT Kiwoom Sekuritas Indonesia. Information has been obtained from sources believed to be reliable but Kiwoom Securities do not warrant its completeness or accuracy. Forward-looking information or statements in this report contain information that is based on forecast of future results, estimates of amounts not yet determinable, assumptions, and therefore involve known and unknown risks and uncertainties which may cause the actual results, performance or achievements of their subject matter to be materially different from current expectations.

To the fullest extent allowed by law, PT Kiwoom Sekuritas Indonesia shall not be liable for any direct, indirect or consequential losses, loss of profits, damages, costs or expenses incurred or suffered by any person or organization arising from reliance on or use of any information contained on this report. The information that we provide should not be construed in any manner whatsoever as, personalized advice.

No mention of a particular security in this report constitutes a recommendation to buy, sell or hold that or any security, or that any particular security, portfolio of securities, transaction or investment strategy is suitable for any specific person. This report is being supplied to you solely for your information and may not be reproduced by, further distributed to or published in whole or in part by, any other person.