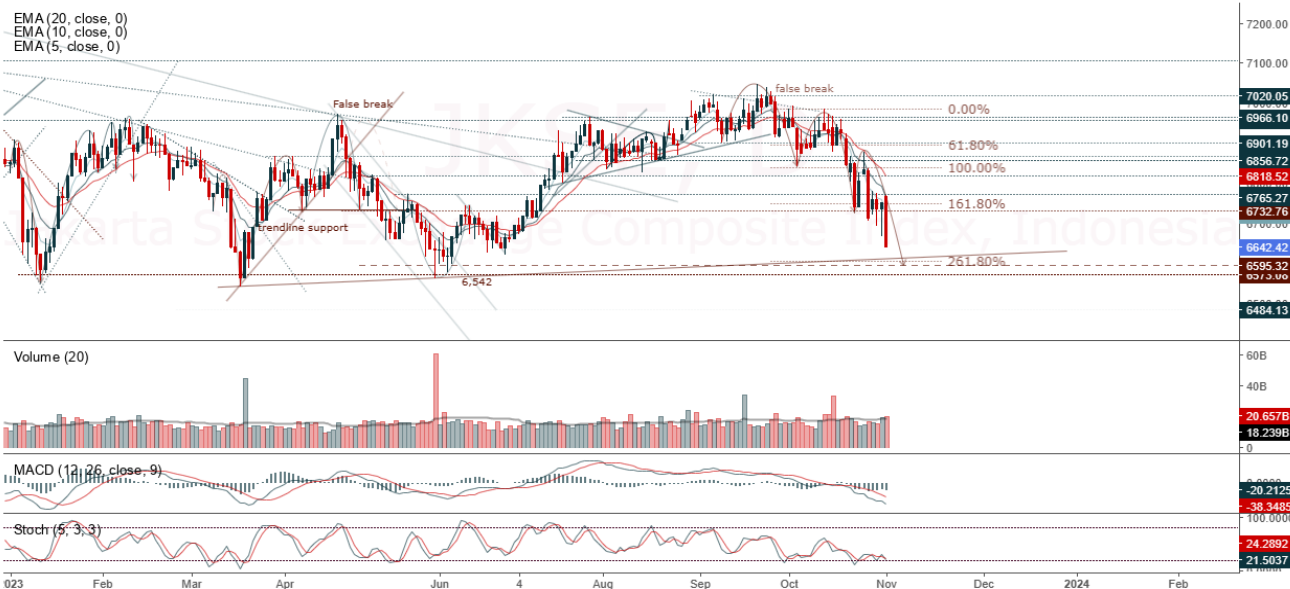


## JCI Range Today 6,562 – 6,578 (Support), 6,692 – 6,704 (Resistance)

Jakarta Stock Exchange Composite Index, Indonesia, Jakarta:JKSE, D



**Jakarta Composite Index**, closed lower and breakdown support yesterday. Primary trend is sideways, secondary trend is downtrend, and minor trend is sideways. The stochastic indicator weakened again, the MACD histogram moved negative (bearish line) and volume fell. Bearish scenario: If it moves bearish again, JCI is expected to weaken again to the support range of 6,562 – 6,578. Bullish scenario: If JCI is able to move bullish, there is a chance for JCI to reach resistance 6,692 – 6,704.

**Stock Pick Today : DRMA, ICBP, PTRO, TSPC**

## DRMA

Dharma Polimetal Tbk PT, Indonesia, Jakarta:DRMA, D

EMA (13, close, 0)  
EMA (34, close, 0)



**(DRMA).** Price closed stronger with a bullish candle. Prices has the opportunity to strengthen to test the nearest resistance. Stochastic is neutral, MACD histogram is moving in a positive direction (sloping line) and volume is increasing slightly. Confirm buy if the next candle returns bullish or buy on support if it goes down first. Be careful if you fail to stay above the support level or become a support breakdown. **(Trading Buy)**

### TRADING STRATEGY:

1. Target Price: The price has a bullish opportunity to test the resistance level 1,415. If it breaks level 1,415 then the price will go to level 1,430. We recommend to be careful if the price fails to break through or turn around the support area.

2. Stop Loss: To minimize the risk of loss, we recommend placing a stop loss at level 1,345.

Entry Buy : 1,360 – 1,385  
Target Price : 1,415 – 1,430  
Support : 1,350 – 1,360  
Cutloss : 1,345

**ICBP**

Indofood Cbp Sukses Makmur Tbk, Indonesia, Jakarta:ICBP, D

EMA (13, close, 0)  
EMA (34, close, 0)



**(ICBP).** Price closed stronger with a bullish candle. Prices has the opportunity to strengthen to test the nearest resistance. Stochastic is bullish, MACD histogram is moving in a positive direction (sloping line) and volume is increasing. Confirm buy if the next candle returns bullish or buy on support if it goes down first. Be careful if you fail to stay above the support level or become a support breakdown.  
**(Trading Buy)**

**TRADING STRATEGY:**

- 1.Target Price: The price has a bullish opportunity to test the resistance level 10,600. If it breaks level 10,600 then the price will go to level 10,675. We recommend to be careful if the price fails to break through or turn around the support area.
2. Stop Loss: To minimize the risk of loss, we recommend placing a stop loss at level 10,100.

Entry Buy : 10,175 – 10,375  
Target Price : 10,600 – 10,675  
Support : 10,125 – 10,175  
Cutloss : 10,100

## PTRO

Petrosea Tbk, Indonesia, Jakarta:PTRO, D

EMA (34, close, 0)  
EMA (13, close, 0)



**(PTRO).** Price closed stronger limited within the previous candle area. Price has the opportunity to strengthen to the nearest resistance. Stochastic is approaching the oversold area, MACD histogram is moving positive (bullish line) and volume is decrease. Confirm buy if the next candle returns bullish or buy on support if it goes down first. Be careful if you fail to stay above the support level or become a support breakdown. **(Trading Buy)**

### TRADING STRATEGY:

1. Target Price: The price has a bullish opportunity to test the resistance level 4,030. If it breaks level 4,030 then the price will go to level 4,160. We recommend to be careful if the price fails to break through or turn around the support area.

2. Stop Loss: To minimize the risk of loss, we recommend placing a stop loss at level 3,720.

Entry Buy : 3,780 – 3,900  
Target Price : 4,030 – 4,160  
Support : 3,730 – 3,780  
Cutloss : 3,720

**TSPC**

Tempo Scan Pacific Tbk, Indonesia, Jakarta:TSPC, D

EMA (13, close, 0)  
EMA (34, close, 0)



**(TSPC).** Price closed stronger and breakout resistance. Prices has the opportunity to continue strengthening to the nearest resistance. Stochastic is bullish, MACD histogram is moving in a positive direction (sloping line) and the volume trend is increasing. Confirm buy if the next candle returns bullish or buy on support if it goes down first. Be careful if you fail to stay above the support level or become a support breakdown. **(Trading Buy)**

**TRADING STRATEGY:**

1.Target Price: The price has a bullish opportunity to test the resistance level 1,840. If it breaks level 1,840 then the price will go to level 1,870. We recommend to be careful if the price fails to break through or turn around the support area.

2. Stop Loss: To minimize the risk of loss, we recommend placing a stop loss at level 1,740.

Entry Buy : 1,755 – 1,800  
Target Price : 1,840 – 1,870  
Support : 1,745 – 1,755  
Cutloss : 1,740

## Forecast – Technical Analysis

Ticker	MA5	RSI Rec	MACD Trend	Recomm.	Pivot Point	Support		Resistance		Stop Loss Level
						1	2	1	2	
JCI	Positive	Trading	Negative	Hold	6,950	6,925	6,900	6,975	7,000	6,800
ACES	Positive	Trading	Negative	Hold	775	760	755	780	795	745
ADRO	Positive	Trading	Negative	Hold	2,725	2,665	2,635	2,755	2,815	2,595
AKRA	Negative	Trading	Negative	Sell	1,460	1,420	1,385	1,495	1,535	1,365
AMRT	Negative	Trading	Positive	Hold	2,945	2,905	2,865	2,985	3,025	2,820
ANTM	Positive	Oversold	Negative	Spec. Buy	1,785	1,760	1,740	1,805	1,830	1,715
ARTO	Positive	Oversold	Negative	Spec. Buy	2,035	2,000	1,985	2,050	2,085	1,955
ASII	Positive	Oversold	Positive	Buy	6,225	6,150	6,125	6,250	6,325	6,025
BBCA	Negative	Trading	Positive	Hold	9,125	9,075	8,950	9,250	9,300	8,825
BBNI	Negative	OverBought	Positive	Sell	10,375	10,275	10,250	10,400	10,500	10,075
BBRI	Positive	Oversold	Negative	Spec. Buy	5,250	5,225	5,200	5,275	5,300	5,125
BBTN	Negative	Trading	Positive	Hold	1,245	1,230	1,215	1,260	1,275	1,200
BMRI	Negative	Trading	Positive	Hold	6,025	5,975	5,950	6,050	6,100	5,850
BRIS	Positive	Oversold	Negative	Spec. Buy	1,570	1,520	1,485	1,605	1,655	1,465
BRPT	Positive	OverBought	Negative	Sell	1,335	1,270	1,250	1,355	1,420	1,230
BUKA	Positive	Oversold	Negative	Spec. Buy	209	205	205	209	213	201
CPIN	Negative	OverBought	Positive	Sell	5,525	5,375	5,325	5,575	5,725	5,225
EMTK	Negative	Trading	Positive	Hold	600	585	580	605	620	570
ESSA	Positive	Trading	Negative	Hold	735	715	700	750	770	690
EXCL	Negative	Trading	Positive	Hold	2,410	2,370	2,360	2,420	2,460	2,325
GGRM	Negative	Trading	Positive	Hold	24,875	24,450	24,050	25,275	25,700	23,700
GOTO	Positive	Oversold	Negative	Spec. Buy	85	83	82	86	88	80
HRUM	Positive	Trading	Negative	Hold	1,760	1,690	1,670	1,780	1,850	1,640
ICBP	Positive	Trading	Positive	Spec. Buy	11,075	10,950	10,850	11,175	11,300	10,675
INCO	Positive	Oversold	Negative	Spec. Buy	5,525	5,450	5,350	5,625	5,700	5,275
INDF	Positive	Trading	Positive	Spec. Buy	6,750	6,700	6,650	6,800	6,850	6,550
INDY	Positive	Trading	Negative	Hold	2,095	2,050	2,025	2,120	2,165	1,995
INKP	Positive	Trading	Negative	Hold	10,675	10,225	10,150	10,750	11,200	10,000
INTP	Positive	Trading	Negative	Hold	10,075	9,950	9,925	10,100	10,225	9,775
ITMG	Positive	Trading	Negative	Hold	28,200	27,725	27,525	28,400	28,875	27,100
KLBF	Negative	Trading	Positive	Hold	1,780	1,760	1,740	1,800	1,820	1,715
MAPI	Negative	Trading	Positive	Hold	1,915	1,875	1,840	1,950	1,990	1,810
MDKA	Positive	Oversold	Negative	Spec. Buy	2,590	2,455	2,370	2,675	2,810	2,330
MEDC	Positive	Trading	Negative	Hold	1,485	1,420	1,385	1,520	1,585	1,365
PGAS	Positive	Trading	Negative	Hold	1,365	1,360	1,345	1,380	1,385	1,325
PTBA	Positive	Oversold	Negative	Spec. Buy	2,760	2,710	2,690	2,780	2,830	2,650
SCMA	Positive	Trading	Negative	Hold	153	150	147	156	159	145
SIDO	Positive	Oversold	Positive	Buy	585	580	580	585	590	570
SMGR	Positive	Oversold	Negative	Spec. Buy	6,425	6,375	6,300	6,500	6,550	6,200
SRTG	Positive	Trading	Negative	Hold	1,730	1,650	1,610	1,770	1,850	1,585
TBIG	Positive	Oversold	Negative	Spec. Buy	1,970	1,940	1,900	2,010	2,040	1,870
TLKM	Positive	Trading	Positive	Spec. Buy	3,765	3,730	3,705	3,790	3,825	3,650
TOWR	Positive	Oversold	Negative	Spec. Buy	960	950	945	965	975	930
TPIA	Positive	OverBought	Positive	Hold	2,575	2,545	2,525	2,595	2,625	2,485
UNTR	Positive	Trading	Negative	Hold	27,325	26,725	26,400	27,650	28,250	26,000
UNVR	Positive	Trading	Positive	Spec. Buy	3,635	3,570	3,525	3,680	3,745	3,470

## OUR TEAM

**Sukarno Alatas**

Head of Equity Research

[sukarno@kiwoom.co.id](mailto:sukarno@kiwoom.co.id) | 021 5010 5800**Michelle Abadi**

Associate

[michelle@kiwoom.co.id](mailto:michelle@kiwoom.co.id) | 021 5010 5800**Abdul Azis Setyo Wibowo**

Equity Research Analyst

[azis@kiwoom.co.id](mailto:azis@kiwoom.co.id) | 021 5010 5800**Vicky Rosalinda**

Equity Research Analyst

[vicky.rosalinda@kiwoom.co.id](mailto:vicky.rosalinda@kiwoom.co.id) | 021 5010 5800**OTHER DISCLOSURES**

All Kiwoom's research reports made available to clients are simultaneously available on our own website <http://www.kiwoom.co.id/>. Not all research content is redistributed, e-mailed or made available to third-party aggregators. For all research reports available on a particular stock, please contact your sales representative. Any data discrepancies in this report could be the result of different calculations and/or adjustments.

**DISCLAIMER** This report has been prepared and issued by PT Kiwoom Sekuritas Indonesia. Information has been obtained from sources believed to be reliable but Kiwoom Securities do not warrant its completeness or accuracy. Forward-looking information or statements in this report contain information that is based on forecast of future results, estimates of amounts not yet determinable, assumptions, and therefore involve known and unknown risks and uncertainties which may cause the actual results, performance or achievements of their subject matter to be materially different from current expectations.

To the fullest extent allowed by law, PT Kiwoom Sekuritas Indonesia shall not be liable for any direct, indirect or consequential losses, loss of profits, damages, costs or expenses incurred or suffered by any person or organization arising from reliance on or use of any information contained on this report. The information that we provide should not be construed in any manner whatsoever as, personalized advice.

No mention of a particular security in this report constitutes a recommendation to buy, sell or hold that or any security, or that any particular security, portfolio of securities, transaction or investment strategy is suitable for any specific person. This report is being supplied to you solely for your information and may not be reproduced by, further distributed to or published in whole or in part by, any other person.