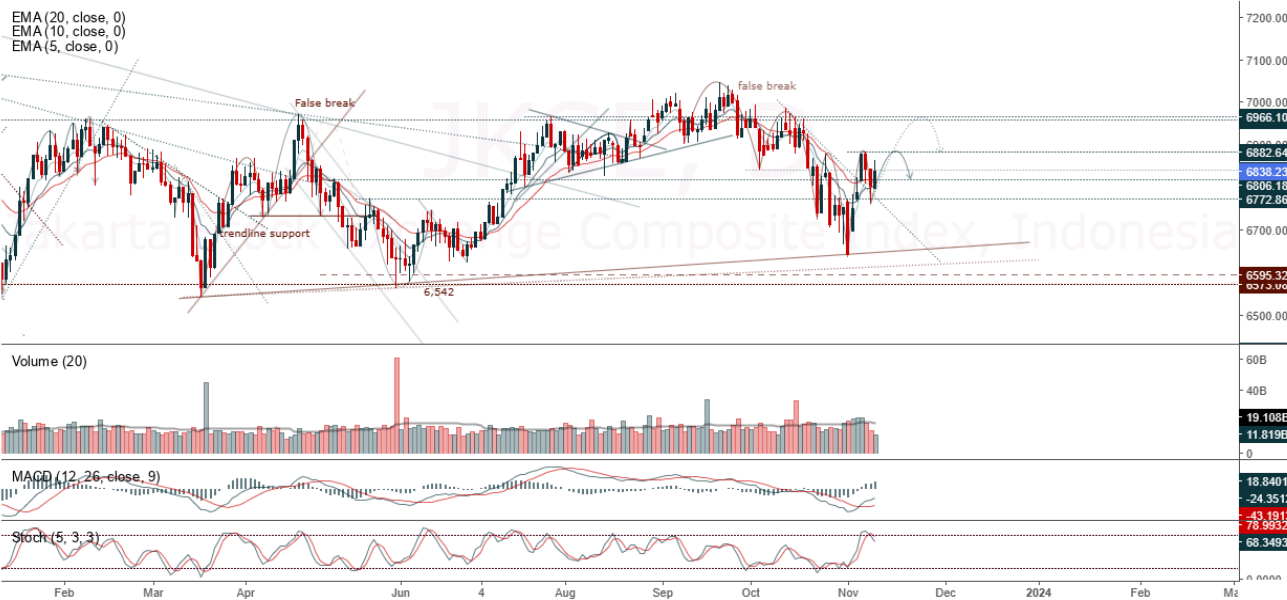


JCI Range Today 6,784 – 6,793 (Support), 6,878 – 6,908 (Resistance)

Jakarta Stock Exchange Composite Index, Indonesia, Jakarta:JKSE, D



Jakarta Composite Index, JCI closed higher with a bullish candle and back to above 6,826. The short-term index is sideways condition. Indicator from stochastic is flat, MACD histogram is moving positive (line is bullish) and volume is decreasing. Bearish scenario: If it moves bearish again, JCI is expected to weaken again to the support range of 6,784 – 6,793. Bullish scenario: If JCI is able to move bullish, JCI has a chance to reach resistance 6,878 – 6,908.

Stock Pick Today : *BFIN, BRPT, MYOR, TKIM*

BFIN

BFI Finance Indonesia Tbk, Indonesia, Jakarta: BFIN, D

EMA (13, close, 0)
EMA (34, close, 0)



(BFIN). Price closed back to rally and breakout resistance. Price has the opportunity to strengthen next resistance. Stochastic is bullish, MACD histogram is moving positive (line is bullish) and volume is increasing. Confirm buy if the next candle returns bullish or buy on support if it goes down first. Be careful if you fail to stay above the support level or become a support breakdown. **(Trading Buy)**

TRADING STRATEGY:

1. Target Price: The price has a bullish opportunity to test the resistance level 1,130. If it breaks level 1,130 then the price will go to level 1,145. We recommend to be careful if the price fails to break through or turn around the support area.

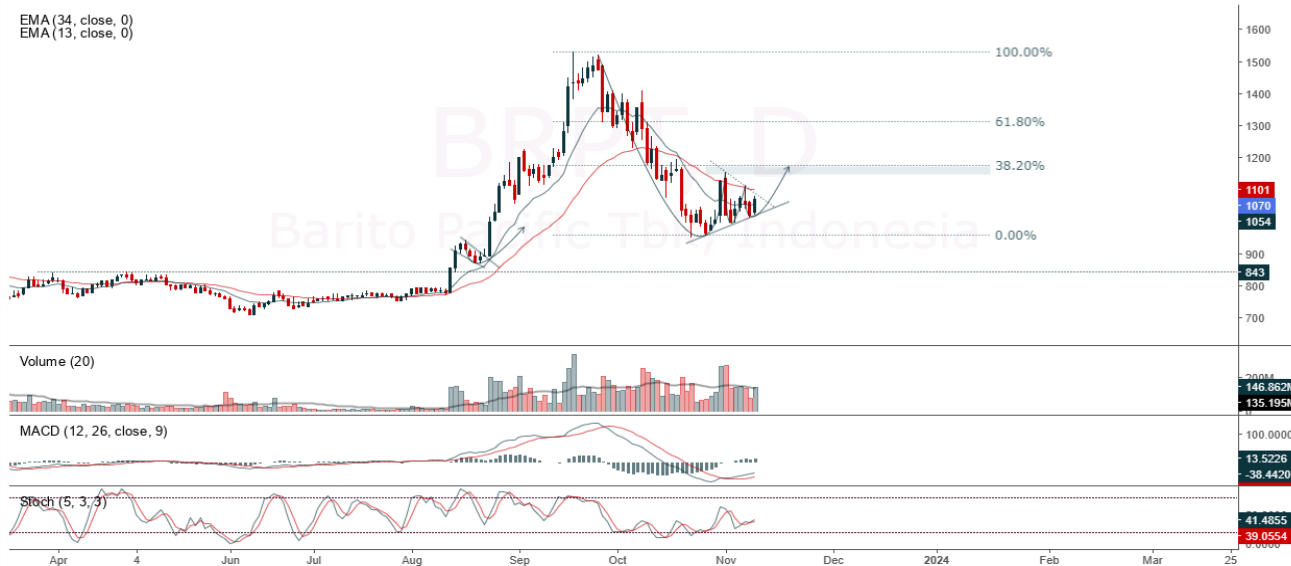
2. Stop Loss: To minimize the risk of loss, we recommend placing a stop loss at level 1,065.

Entry Buy : 1,080 – 1,105
Target Price : 1,130 – 1,145
Support : 1,070 – 1,080
Cutloss : 1,065

BRPT

Barito Pacific Tbk, Indonesia, Jakarta:BRPT, D

EMA (34, close, 0)
EMA (13, close, 0)



(BRPT). Price closed stronger with a bullish candle. Price has the opportunity moving to test the nearest resistance. Stochastic is bullish, MACD histogram is moving in a positive (line is bullish) and volume is increasing. Confirm buy if the next candle returns bullish or buy on support if it goes down first. Be careful if you fail to stay above the support level or become a support breakdown. **(Trading Buy)**

TRADING STRATEGY:

1. Target Price: The price has a bullish opportunity to test the resistance level 1,110. If it breaks level 1,110 then the price will go to level 1,130. We recommend to be careful if the price fails to break through or turn around the support area.

2. Stop Loss: To minimize the risk of loss, we recommend placing a stop loss at level 1,030.

Entry Buy : 1,055 – 1,070
Target Price : 1,110 – 1,130
Support : 1,035 – 1,055
Cutloss : 1,030

MYOR

Mayora Indah Tbk, Indonesia, Jakarta:MYOR, D

EMA
EMA



(MYOR). Price closed stronger with bullish candle. Price has the opportunity strengthen to the nearest resistance. Stochastic is bullish, MACD histogram is positive (line is golden cross potential) and volume is increasing. Confirm buy if the next candle returns bullish or buy on support if it goes down first. Be careful if you fail to stay above the support level or become a support breakdown. **(Trading Buy)**

TRADING STRATEGY:

1. Target Price: The price has a bullish opportunity to test the resistance level 2,720. If it breaks level 2,720 then the price will go to level 2,770. We recommend to be careful if the price fails to break through or turn around the support area.

2. Stop Loss: To minimize the risk of loss, we recommend placing a stop loss at level 2,590.

Entry Buy : 2,620 – 2,670
Target Price : 2,720 – 2,770
Support : 2,600 – 2,620
Cutloss : 2,590

TKIM

Pabrik Kertas Tjiwi Kimia Tbk, Indonesia, Jakarta:TKIM, D

EMA (13, close, 0)
EMA (34, close, 0)



(TKIM). Price closed stronger and breakout resistance. Prices has the opportunity continue strengthening to the next resistance. Stochastic is bullish, MACD histogram is moving positive direction (line is golden cross potential) and the volume trend is increasing. Confirm buy if the next candle returns bullish or buy on support if it goes down first. Be careful if you fail to stay above the support level or become a support breakdown. **(Trading Buy)**

TRADING STRATEGY:

- 1.Target Price: The price has a bullish opportunity to test the resistance level 7,950. If it breaks level 7,950 then the price will go to level 8,050. We recommend to be careful if the price fails to break through or turn around the support area.
2. Stop Loss: To minimize the risk of loss, we recommend placing a stop loss at level 7,475.

Entry Buy : 7,575 – 7,725
 Target Price : 7,950 – 8,050
 Support : 7,500 – 7,575
 Cutloss : 7,475

Forecast – Technical Analysis

| Ticker | MA5 | RSI Rec | MACD Trend | Recomm. | Pivot Point | Support | | Resistance | | Stop Loss Level |
|--------|----------|------------|------------|-------------|-------------|---------|--------|------------|--------|-----------------|
| | | | | | | 1 | 2 | 1 | 2 | |
| JCI | Negative | Trading | Positive | Hold | 6,850 | 6,825 | 6,775 | 6,900 | 6,925 | 6,675 |
| ACES | Negative | OverBought | Negative | Strong Sell | 845 | 830 | 810 | 865 | 880 | 795 |
| ADRO | Negative | Trading | Negative | Hold | 2,475 | 2,435 | 2,375 | 2,535 | 2,575 | 2,335 |
| AKRA | Positive | Trading | Positive | Hold | 1,500 | 1,485 | 1,470 | 1,515 | 1,530 | 1,445 |
| AMRT | Negative | Trading | Positive | Spec. Buy | 2,855 | 2,820 | 2,785 | 2,890 | 2,925 | 2,745 |
| ANTM | Negative | Trading | Negative | Hold | 1,700 | 1,680 | 1,660 | 1,720 | 1,740 | 1,635 |
| ARTO | Negative | Trading | Positive | Hold | 1,965 | 1,900 | 1,840 | 2,025 | 2,090 | 1,810 |
| ASII | Negative | Trading | Positive | Hold | 5,875 | 5,800 | 5,700 | 5,975 | 6,050 | 5,600 |
| BBCA | Negative | Trading | Positive | Hold | 8,975 | 8,925 | 8,850 | 9,050 | 9,100 | 8,725 |
| BBNI | Negative | Trading | Negative | Sell | 4,950 | 4,925 | 4,890 | 4,985 | 5,000 | 4,815 |
| BBRI | Negative | Trading | Positive | Hold | 5,225 | 5,200 | 5,125 | 5,300 | 5,325 | 5,050 |
| BBTN | Negative | Trading | Positive | Spec. Buy | 1,215 | 1,205 | 1,195 | 1,225 | 1,235 | 1,175 |
| BMRI | Negative | Trading | Positive | Hold | 5,900 | 5,825 | 5,725 | 6,000 | 6,075 | 5,650 |
| BRIS | Negative | Trading | Positive | Hold | 1,505 | 1,490 | 1,460 | 1,535 | 1,550 | 1,440 |
| BRPT | Negative | Trading | Positive | Spec. Buy | 1,070 | 1,025 | 1,000 | 1,095 | 1,140 | 985 |
| BUKA | Negative | Trading | Positive | Spec. Buy | 210 | 207 | 204 | 213 | 216 | 200 |
| CPIN | Negative | Trading | Positive | Spec. Buy | 5,500 | 5,450 | 5,325 | 5,625 | 5,675 | 5,250 |
| EMTK | Negative | Trading | Negative | Sell | 535 | 530 | 515 | 550 | 555 | 510 |
| ESSA | Negative | Oversold | Negative | Spec. Buy | 585 | 570 | 550 | 605 | 620 | 540 |
| EXCL | Negative | Trading | Negative | Hold | 2,105 | 2,080 | 2,045 | 2,140 | 2,165 | 2,015 |
| GGRM | Positive | Oversold | Negative | Spec. Buy | 22,225 | 21,525 | 20,875 | 22,875 | 23,575 | 20,550 |
| GOTO | Negative | Trading | Positive | Hold | 77 | 75 | 72 | 80 | 82 | 70 |
| HRUM | Positive | Oversold | Negative | Spec. Buy | 1,490 | 1,465 | 1,435 | 1,520 | 1,545 | 1,415 |
| ICBP | Negative | Trading | Positive | Hold | 10,450 | 10,400 | 10,250 | 10,600 | 10,650 | 10,100 |
| INCO | Negative | Oversold | Negative | Spec. Buy | 4,920 | 4,885 | 4,830 | 4,975 | 5,000 | 4,755 |
| INDF | Positive | Oversold | Negative | Spec. Buy | 6,375 | 6,325 | 6,300 | 6,400 | 6,450 | 6,200 |
| INDY | Positive | Oversold | Negative | Spec. Buy | 1,610 | 1,565 | 1,525 | 1,650 | 1,695 | 1,500 |
| INKP | Negative | Oversold | Negative | Spec. Buy | 8,575 | 8,425 | 8,225 | 8,775 | 8,925 | 8,100 |
| INTP | Negative | Trading | Positive | Hold | 9,900 | 9,600 | 9,400 | 10,100 | 10,400 | 9,250 |
| ITMG | Negative | Oversold | Negative | Spec. Buy | 25,450 | 25,350 | 25,225 | 25,575 | 25,675 | 24,850 |
| KLBF | Negative | Oversold | Negative | Spec. Buy | 1,610 | 1,595 | 1,580 | 1,625 | 1,640 | 1,555 |
| MAPI | Negative | Oversold | Negative | Spec. Buy | 1,635 | 1,580 | 1,510 | 1,705 | 1,760 | 1,485 |
| MDKA | Negative | Trading | Positive | Hold | 2,490 | 2,460 | 2,390 | 2,560 | 2,590 | 2,355 |
| MEDC | Negative | Oversold | Negative | Spec. Buy | 1,190 | 1,160 | 1,115 | 1,235 | 1,265 | 1,100 |
| PGAS | Positive | Oversold | Negative | Spec. Buy | 1,220 | 1,205 | 1,185 | 1,240 | 1,255 | 1,165 |
| PTBA | Negative | Oversold | Negative | Spec. Buy | 2,380 | 2,350 | 2,320 | 2,410 | 2,440 | 2,285 |
| SCMA | Negative | Trading | Negative | Hold | 150 | 147 | 144 | 153 | 156 | 141 |
| SIDO | Negative | Oversold | Negative | Spec. Buy | 500 | 496 | 492 | 505 | 510 | 484 |
| SMGR | Negative | Trading | Positive | Hold | 6,450 | 6,425 | 6,350 | 6,525 | 6,550 | 6,250 |
| SRTG | Negative | Trading | Positive | Sell | 1,480 | 1,455 | 1,425 | 1,510 | 1,535 | 1,405 |
| TBIG | Negative | Trading | Positive | Hold | 2,085 | 2,030 | 1,985 | 2,130 | 2,185 | 1,955 |
| TLKM | Positive | Trading | Positive | Hold | 3,585 | 3,555 | 3,525 | 3,615 | 3,645 | 3,470 |
| TOWR | Negative | Trading | Positive | Hold | 960 | 950 | 940 | 970 | 980 | 925 |
| TPIA | Negative | OverBought | Positive | Hold | 2,945 | 2,895 | 2,835 | 3,005 | 3,055 | 2,790 |
| UNTR | Positive | Oversold | Negative | Spec. Buy | 23,625 | 23,150 | 22,775 | 24,000 | 24,475 | 22,425 |
| UNVR | Negative | Trading | Negative | Hold | 3,590 | 3,560 | 3,520 | 3,630 | 3,660 | 3,465 |

OUR TEAM

Sukarno Alatas

Head of Equity Research

sukarno@kiwoom.co.id | 021 5010 5800**Abdul Azis Setyo Wibowo**

Equity Research Analyst

azis@kiwoom.co.id | 021 5010 5800**Vicky Rosalinda**

Equity Research Analyst

vicky.rosalinda@kiwoom.co.id | 021 5010 5800**OTHER DISCLOSURES**

All Kiwoom's research reports made available to clients are simultaneously available on our own website <http://www.kiwoom.co.id/>. Not all research content is redistributed, e-mailed or made available to third-party aggregators. For all research reports available on a particular stock, please contact your sales representative. Any data discrepancies in this report could be the result of different calculations and/or adjustments.

DISCLAIMER This report has been prepared and issued by PT Kiwoom Sekuritas Indonesia. Information has been obtained from sources believed to be reliable but Kiwoom Securities do not warrant its completeness or accuracy. Forward-looking information or statements in this report contain information that is based on forecast of future results, estimates of amounts not yet determinable, assumptions, and therefore involve known and unknown risks and uncertainties which may cause the actual results, performance or achievements of their subject matter to be materially different from current expectations.

To the fullest extent allowed by law, PT Kiwoom Sekuritas Indonesia shall not be liable for any direct, indirect or consequential losses, loss of profits, damages, costs or expenses incurred or suffered by any person or organization arising from reliance on or use of any information contained on this report. The information that we provide should not be construed in any manner whatsoever as, personalized advice.

No mention of a particular security in this report constitutes a recommendation to buy, sell or hold that or any security, or that any particular security, portfolio of securities, transaction or investment strategy is suitable for any specific person. This report is being supplied to you solely for your information and may not be reproduced by, further distributed to or published in whole or in part by, any other person.