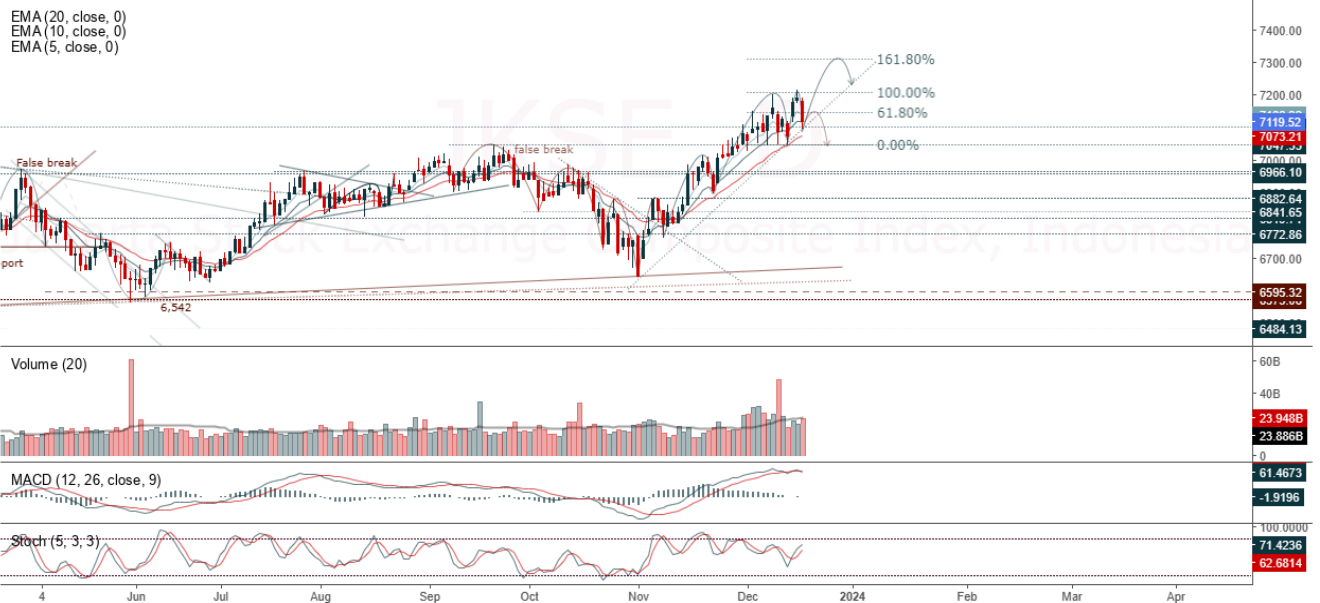


**JCI Range Today 7,045 – 7,072 (Support), 7,160 – 7,191 (Resistance)**

Jakarta Stock Exchange Composite Index, Indonesia, Jakarta:JKSE, D



**Jakarta Composite Index**, JCI closed negative, false break and double top pattern risk. The short-term index is still to uptrend condition. Indicator from stochastic is neutral, MACD histogram is moving positive (line is back to bullish) and volume is increasing. Bearish scenario: If it moves bearish again, JCI is expected to weaken again to the support range of 7,045 – 7,072. Bullish scenario: If JCI is able to move bullish, JCI has a chance to reach resistance 7,160 – 7,191.

**Stock Pick Today: BMRI, ICBP, KLBF, MAPA**

**BMRI**

Bank Mandiri Persero Tbk PT, Indonesia, Jakarta:BMRI, D



**(BMRI).** Price closed lower with bullish candle. Price has opportunity to continue to the nearest resistance. Stochastic is bullish, MACD histogram is moving positive (line is bullish) and volume is increasing. Confirm buy if the next candle returns bullish or buy on support if it goes down first. Be careful if you fail to stay above the support level or become a support breakdown. **(Trading Buy)**

**TRADING STRATEGY:**

1. Target Price: The price has a bullish opportunity to test the resistance level 6,025. If it breaks level 6,025 then the price will go to level 6,100. We recommend to be careful if the price fails to break through or turn around the support area.

2. Stop Loss: To minimize the risk of loss, we recommend placing a stop loss at level 5,775.

Entry Buy : 5,850 – 5,925  
Target Price : 6,025 – 6,100  
Support : 5,800 – 5,850  
Cut loss : 5,775

**ICBP**

Indofood Cbp Sukses Makmur Tbk, Indonesia, Jakarta:ICBP, D

EMA (13, close, 0)  
EMA (34, close, 0)



**(ICBP).** Price closed higher with bullish candle. Price has the opportunity strengthen to the nearest resistance. Stochastic is golden cross, MACD histogram is positive direction (line is golden cross) and volume is neutral. Confirm buy if the next candle returns bullish or buy on support if it goes down first. Be careful if you fail to stay above the support level or become a support breakdown. **(Trading Buy)**

**TRADING STRATEGY:**

1.Target Price: The price has a bullish opportunity to test the resistance level 10,750. If it breaks level 10,750 then the price will go to level 10,900. We recommend to be careful if the price fails to break through or turn around the support area.

2. Stop Loss: To minimize the risk of loss, we recommend placing a stop loss at level 10,350.

Entry Buy : 10,400 – 10,600  
Target Price : 10,750 – 10,900  
Support : 10,375 – 10,400  
Cut loss : 10,350

## KLBF

Kalbe Farma Tbk PT, Indonesia, Jakarta:KLBF, D



**(KLBF).** Price closed stronger with bullish candle. Price has the opportunity strengthen to the next resistance. Stochastic is bullish, MACD histogram is negative (line is neutral) and volume decreasing. Confirm buy if the next candle returns bullish or buy on support if it goes down first. Be careful if you fail to stay above the support level or become a support breakdown. **(Trading Buy)**

### TRADING STRATEGY:

1.Target Price: The price has a bullish opportunity to test the resistance level 1,645. If it breaks level 1,645 then the price will go to level 1,670. We recommend to be careful if the price fails to break through or turn around the support area.

2. Stop Loss: To minimize the risk of loss, we recommend placing a stop loss at level 1,570.

Entry Buy : 1,590 – 1,615  
Target Price : 1,645 – 1,670  
Support : 1,575 – 1,590  
Cut loss : 1,570

**MAPA**

MAP Aktif Adiperkasa Tbk PT, Indonesia, Jakarta:MAPA, D



**(MAPA).** Price closed higher with bullish candle. Price has the opportunity continue to the nearest resistance. Stochastic is golden cross, MACD histogram is positive direction (line is golden cross potential) and volume is increasing. Confirm buy if the next candle returns bullish or buy on support if it goes down first. Be careful if you fail to stay above the support level or become a support breakdown.  
**(Trading Buy)**

**TRADING STRATEGY:**

- 1.Target Price: The price has a bullish opportunity to test the resistance level 815. If it breaks level 815 then the price will go to level 825. We recommend to be careful if the price fails to break through or turn around the support area.
2. Stop Loss: To minimize the risk of loss, we recommend placing a stop loss at level 770.

Entry Buy : 785 – 800  
Target Price : 815 – 825  
Support : 775 – 785  
Cut loss : 770

## Forecast – Technical Analysis

Ticker	MA5	RSI Rec	MACD Trend	Recomm.	Pivot Point	Support		Resistance		Stop Loss Level
						1	2	1	2	
JCI	Negative	OverBought	Positive	Sell	7,150	7,100	7,050	7,200	7,250	6,950
ACES	Positive	Oversold	Negative	Spec. Buy	710	680	660	730	760	650
ADRO	Positive	Trading	Negative	Hold	2,515	2,480	2,435	2,560	2,595	2,400
AKRA	Negative	Trading	Positive	Hold	1,455	1,435	1,415	1,475	1,495	1,395
AMRT	Negative	Trading	Negative	Sell	2,690	2,630	2,470	2,850	2,910	2,435
ANTM	Positive	Trading	Negative	Hold	1,660	1,640	1,605	1,695	1,715	1,580
ARTO	Negative	Trading	Negative	Sell	3,055	2,900	2,695	3,260	3,415	2,655
ASII	Positive	Trading	Positive	Spec. Buy	5,625	5,575	5,525	5,675	5,725	5,425
BBCA	Negative	OverBought	Positive	Sell	9,200	9,175	9,125	9,250	9,275	8,975
BBNI	Negative	Trading	Negative	Sell	5,225	5,175	5,100	5,300	5,350	5,025
BBRI	Negative	OverBought	Positive	Sell	5,550	5,500	5,475	5,575	5,625	5,375
BBTN	Negative	Trading	Negative	Sell	1,225	1,220	1,205	1,240	1,245	1,190
BMRI	Negative	Trading	Positive	Hold	5,900	5,850	5,800	5,950	6,000	5,700
BRIS	Negative	OverBought	Negative	Strong Sell	1,690	1,675	1,655	1,710	1,725	1,630
BRPT	Positive	OverBought	Positive	Hold	1,530	1,385	1,210	1,705	1,850	1,190
BUKA	Negative	Trading	Negative	Sell	207	203	199	211	215	196
CPIN	Positive	Trading	Negative	Hold	4,985	4,950	4,910	5,025	5,050	4,840
EMTK	Negative	Trading	Negative	Sell	570	560	545	585	595	535
ESSA	Positive	Oversold	Negative	Spec. Buy	510	497	486	520	530	479
EXCL	Positive	Oversold	Negative	Spec. Buy	1,915	1,885	1,860	1,940	1,970	1,830
GGRM	Positive	Oversold	Positive	Buy	20,575	20,275	20,000	20,850	21,150	19,700
GOTO	Negative	Trading	Negative	Sell	88	85	79	94	97	78
HRUM	Positive	Trading	Positive	Spec. Buy	1,325	1,295	1,265	1,355	1,385	1,245
ICBP	Negative	Trading	Negative	Sell	10,500	10,425	10,275	10,650	10,725	10,125
INCO	Positive	Oversold	Positive	Buy	4,205	4,190	4,155	4,240	4,255	4,095
INDF	Positive	Trading	Positive	Spec. Buy	6,300	6,250	6,175	6,375	6,425	6,100
INDY	Positive	Oversold	Positive	Buy	1,420	1,395	1,375	1,440	1,465	1,355
INKP	Negative	Oversold	Negative	Specu. Buy	8,025	7,925	7,850	8,100	8,200	7,750
INTP	Positive	Trading	Negative	Hold	9,300	9,225	9,200	9,325	9,400	9,050
ITMG	Negative	Trading	Positive	Hold	24,325	24,050	23,750	24,625	24,900	23,400
KLBF	Positive	Trading	Negative	Hold	1,610	1,600	1,580	1,630	1,640	1,555
MAPI	Negative	Trading	Positive	Hold	1,670	1,660	1,630	1,700	1,710	1,605
MDKA	Positive	Trading	Negative	Hold	2,305	2,260	2,215	2,350	2,395	2,180
MEDC	Negative	Trading	Positive	Hold	1,115	1,085	1,050	1,150	1,180	1,035
PGAS	Positive	Oversold	Positive	Buy	1,075	1,060	1,045	1,090	1,105	1,030
PTBA	Positive	Oversold	Negative	Spec. Buy	2,330	2,300	2,280	2,350	2,380	2,245
SCMA	Negative	Trading	Negative	Sell	149	147	145	151	153	143
SIDO	Negative	Trading	Positive	Hold	545	545	535	555	555	530
SMGR	Negative	Trading	Negative	Sell	6,175	6,125	6,100	6,200	6,250	6,000
SRTG	Negative	Trading	Negative	Sell	1,555	1,530	1,500	1,585	1,610	1,480
TBIG	Negative	Trading	Positive	Hold	2,070	2,055	2,040	2,085	2,100	2,005
TLKM	Positive	OverBought	Positive	Hold	3,955	3,935	3,915	3,975	3,995	3,855
TOWR	Negative	Trading	Positive	Hold	975	950	920	1,005	1,030	905
TPIA	Negative	Strong Sell	Positive	Sell	5,100	4,730	4,520	5,300	5,650	4,450
UNTR	Positive	Oversold	Positive	Buy	21,625	21,375	21,150	21,850	22,100	20,825
UNVR	Positive	Trading	Negative	Hold	3,440	3,395	3,340	3,495	3,540	3,285

## OUR TEAM

**Sukarno Alatas**

Head of Equity Research

[sukarno@kiwoom.co.id](mailto:sukarno@kiwoom.co.id) | 021 5010 5800**Abdul Azis Setyo Wibowo**

Equity Research Analyst

[azis@kiwoom.co.id](mailto:azis@kiwoom.co.id) | 021 5010 5800**Miftahul Khaer**

Equity Research Analyst

[khaer.miftahul@kiwoom.co.id](mailto:khaer.miftahul@kiwoom.co.id) | 021 5010 5800**Vicky Rosalinda**

Equity Research Analyst

[vicky.rosalinda@kiwoom.co.id](mailto:vicky.rosalinda@kiwoom.co.id) | 021 5010 5800**OTHER DISCLOSURES**

All Kiwoom's research reports made available to clients are simultaneously available on our own website <http://www.kiwoom.co.id/>. Not all research content is redistributed, e-mailed or made available to third-party aggregators. For all research reports available on a particular stock, please contact your sales representative. Any data discrepancies in this report could be the result of different calculations and/or adjustments.

**DISCLAIMER** This report has been prepared and issued by PT Kiwoom Sekuritas Indonesia. Information has been obtained from sources believed to be reliable but Kiwoom Securities do not warrant its completeness or accuracy. Forward-looking information or statements in this report contain information that is based on forecast of future results, estimates of amounts not yet determinable, assumptions, and therefore involve known and unknown risks and uncertainties which may cause the actual results, performance or achievements of their subject matter to be materially different from current expectations.

To the fullest extent allowed by law, PT Kiwoom Sekuritas Indonesia shall not be liable for any direct, indirect or consequential losses, loss of profits, damages, costs or expenses incurred or suffered by any person or organization arising from reliance on or use of any information contained on this report. The information that we provide should not be construed in any manner whatsoever as, personalized advice.

No mention of a particular security in this report constitutes a recommendation to buy, sell or hold that or any security, or that any particular security, portfolio of securities, transaction or investment strategy is suitable for any specific person. This report is being supplied to you solely for your information and may not be reproduced by, further distributed to or published in whole or in part by, any other person.