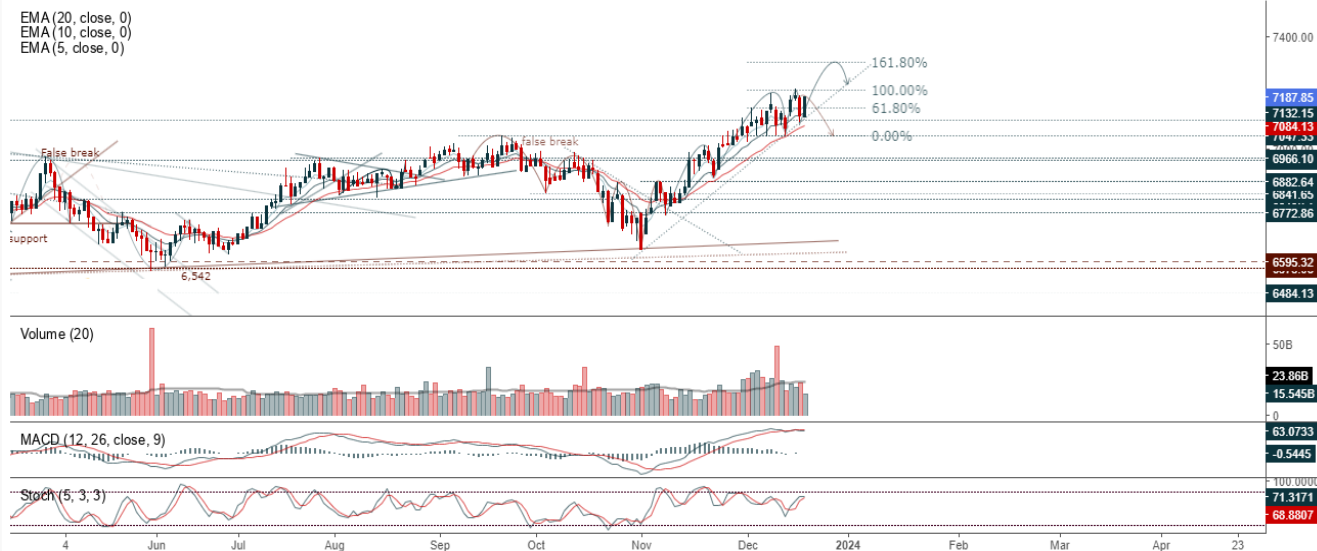


JCI Range Today 7,125 – 7,149 (Support), 7,215 – 7,230 (Resistance)

Jakarta Stock Exchange Composite Index, Indonesia, Jakarta:JKSE, D

EMA (20, close, 0)
EMA (10, close, 0)
EMA (5, close, 0)



Jakarta Composite Index, JCI closed higher with bullish candle. The short-term index is still to uptrend condition. Indicator from stochastic is bullish, MACD histogram is moving positive (line is bullish) and volume is decreasing. Bearish scenario: If it moves bearish again, JCI is expected to weaken again to the support range of 7,125 – 7,149. Bullish scenario: If JCI is able to move bullish, JCI has a chance to reach resistance 7,215 – 7,230.

Stock Pick Today: ENRG, JSMR, PGAS, MYOR

ENRG

Energi Mega Persada Tbk, Indonesia, Jakarta:ENRG, D

EMA (13, close, 0)
EMA (34, close, 0)



(ENRG). Price closed lower with bullish candle. Price has opportunity to continue to the nearest resistance. Stochastic is bullish, MACD histogram is moving positive (line is bullish) and volume is increasing. Confirm buy if the next candle returns bullish or buy on support if it goes down first. Be careful if you fail to stay above the support level or become a support breakdown. **(Trading Buy)**

TRADING STRATEGY:

1. Target Price: The price has a bullish opportunity to test the resistance level 232. If it breaks level 232 then the price will go to level 236. We recommend to be careful if the price fails to break through or turn around the support area.

2. Stop Loss: To minimize the risk of loss, we recommend placing a stop loss at level 218.

Entry Buy : 222 – 226
Target Price : 232 – 236
Support : 220 – 222
Cut loss : 218

JSMR

Jasa Marga Tbk, Indonesia, Jakarta:JSMR, D

EMA (13, close, 0)
EMA (34, close, 0)



(JSMR). Price closed higher with bullish candle. Price has the opportunity strengthen to the next resistance. Stochastic is golden cross, MACD histogram is negative (line is bearish) and volume is neutral. Confirm buy if the next candle returns bullish or buy on support if it goes down first. Be careful if you fail to stay above the support level or become a support breakdown. **(Trading Buy)**

TRADING STRATEGY:

1.Target Price: The price has a bullish opportunity to test the resistance level 4,980. If it breaks level 4,980 then the price will go to level 5,050. We recommend to be careful if the price fails to break through or turn around the support area.

2. Stop Loss: To minimize the risk of loss, we recommend placing a stop loss at level 4,740.

- Entry Buy : 4,790 – 4,880
- Target Price : 4,980 – 5,050
- Support : 4,750 – 4,790
- Cut loss : 4,740

PGAS

Perusahaan Gas Negara Persero, Indonesia, Jakarta:PGAS, D



(PGAS). Price closed stronger with bullish candle. Price has the opportunity strengthen to the next resistance. Stochastic is bullish, MACD histogram is positive (line is bullish) and volume increasing. Confirm buy if the next candle returns bullish or buy on support if it goes down first. Be careful if you fail to stay above the support level or become a support breakdown. **(Trading Buy)**

TRADING STRATEGY:

1.Target Price: The price has a bullish opportunity to test the resistance level 1,115. If it breaks level 1,115 then the price will go to level 1,130. We recommend to be careful if the price fails to break through or turn around the support area.

2. Stop Loss: To minimize the risk of loss, we recommend placing a stop loss at level 1,065.

Entry Buy : 1,080 – 1,095
Target Price : 1,115 – 1,130
Support : 1,070 – 1,080
Cut loss : 1,065

MYOR

Mayora Indah Tbk, Indonesia, Jakarta:MYOR, D



(MYOR). Price closed higher and false breakdown. Price has the opportunity continue to the nearest resistance. Stochastic is golden cross, MACD histogram is positive direction (line is golden cross potential) and volume is increasing. Confirm buy if the next candle returns bullish or buy on support if it goes down first. Be careful if you fail to stay above the support level or become a support breakdown.
(Trading Buy)

TRADING STRATEGY:

1.Target Price: The price has a bullish opportunity to test the resistance level 2,470. If it breaks level 2,470 then the price will go to level 2,500. We recommend to be careful if the price fails to break through or turn around the support area.

2. Stop Loss: To minimize the risk of loss, we recommend placing a stop loss at level 2,330.

Entry Buy : 2,390 – 2,420
Target Price : 2,470 – 2,500
Support : 2,340 – 2,390
Cut loss : 2,330

Forecast – Technical Analysis

Ticker	MA5	RSI Rec	MACD Trend	Recomm.	Pivot Point	Support		Resistance		Stop Loss Level
						1	2	1	2	
JCI	Negative	OverBought	Positive	Sell	7,150	7,125	7,075	7,200	7,225	6,975
ACES	Negative	Trading	Negative	Sell	730	710	685	755	775	675
ADRO	Positive	Trading	Negative	Hold	2,595	2,565	2,545	2,615	2,645	2,505
AKRA	Negative	Trading	Positive	Hold	1,455	1,445	1,435	1,465	1,475	1,415
AMRT	Positive	Oversold	Negative	Spec. Buy	2,770	2,715	2,650	2,835	2,890	2,610
ANTM	Negative	Trading	Positive	Hold	1,640	1,635	1,615	1,660	1,665	1,590
ARTO	Positive	Trading	Negative	Hold	2,980	2,875	2,810	3,045	3,150	2,765
ASII	Negative	Trading	Positive	Hold	5,625	5,600	5,575	5,650	5,675	5,500
BBCA	Negative	OverBought	Positive	Sell	9,200	9,125	9,075	9,250	9,325	8,925
BBNI	Positive	Trading	Negative	Hold	5,200	5,175	5,125	5,250	5,275	5,050
BBRI	Negative	Trading	Positive	Hold	5,500	5,450	5,400	5,550	5,600	5,325
BBTN	Negative	Trading	Negative	Sell	1,225	1,220	1,215	1,230	1,235	1,195
BMRI	Negative	Trading	Positive	Hold	5,950	5,950	5,900	6,000	6,000	5,825
BRIS	Negative	Trading	Negative	Sell	1,700	1,695	1,680	1,715	1,720	1,655
BRPT	Positive	Trading	Positive	Spec. Buy	1,510	1,450	1,370	1,590	1,650	1,350
BUKA	Negative	Trading	Positive	Hold	212	207	204	215	220	200
CPIN	Negative	Trading	Negative	Sell	5,025	4,985	4,935	5,075	5,125	4,860
EMTK	Negative	Trading	Negative	Sell	570	565	555	580	585	545
ESSA	Positive	Oversold	Negative	Spec. Buy	510	498	486	525	535	479
EXCL	Positive	Oversold	Negative	Spec. Buy	1,925	1,885	1,855	1,955	1,995	1,825
GGRM	Negative	Oversold	Positive	Spec. Buy	20,300	20,250	20,175	20,375	20,425	19,875
GOTO	Positive	Trading	Negative	Hold	87	83	79	91	95	78
HRUM	Positive	Oversold	Positive	Buy	1,305	1,295	1,280	1,320	1,330	1,260
ICBP	Positive	Trading	Negative	Hold	10,600	10,550	10,450	10,700	10,750	10,300
INCO	Positive	Oversold	Positive	Buy	4,170	4,105	4,060	4,215	4,280	3,995
INDF	Positive	Oversold	Negative	Spec. Buy	6,300	6,250	6,200	6,350	6,400	6,100
INDY	Positive	Oversold	Positive	Buy	1,430	1,405	1,380	1,455	1,480	1,360
INKP	Positive	Trading	Negative	Hold	8,000	7,925	7,800	8,125	8,200	7,700
INTP	Positive	Trading	Negative	Hold	9,275	9,175	9,100	9,350	9,450	8,950
ITMG	Negative	Trading	Positive	Hold	24,325	24,100	23,775	24,650	24,875	23,425
KLBF	Negative	Trading	Negative	Sell	1,635	1,610	1,570	1,675	1,700	1,550
MAPI	Negative	Trading	Positive	Hold	1,690	1,665	1,645	1,710	1,735	1,620
MDKA	Positive	Trading	Negative	Hold	2,295	2,275	2,245	2,325	2,345	2,210
MEDC	Negative	Trading	Positive	Hold	1,120	1,105	1,090	1,135	1,150	1,075
PGAS	Positive	Oversold	Positive	Buy	1,080	1,055	1,035	1,100	1,125	1,020
PTBA	Positive	Oversold	Negative	Spec. Buy	2,355	2,335	2,315	2,375	2,395	2,280
SCMA	Positive	Trading	Negative	Hold	149	148	147	150	151	144
SIDO	Negative	Trading	Positive	Hold	550	545	535	560	565	530
SMGR	Negative	Oversold	Negative	Specu. Buy	6,150	6,125	6,075	6,200	6,225	5,975
SRTG	Negative	Trading	Negative	Sell	1,580	1,530	1,495	1,615	1,665	1,475
TBIG	Positive	Trading	Negative	Hold	2,065	2,045	2,025	2,085	2,105	1,990
TLKM	Negative	OverBought	Positive	Sell	3,960	3,945	3,930	3,975	3,990	3,870
TOWR	Negative	Trading	Positive	Hold	965	960	945	980	985	930
TPIA	Negative	Strong Sell	Positive	Sell	5,225	5,075	4,890	5,400	5,550	4,815
UNTR	Positive	Trading	Positive	Spec. Buy	21,725	21,600	21,350	21,975	22,100	21,025
UNVR	Negative	Oversold	Negative	Spec. Buy	3,415	3,390	3,355	3,450	3,475	3,305

OUR TEAM

Sukarno Alatas

Head of Equity Research

sukarno@kiwoom.co.id | 021 5010 5800**Abdul Azis Setyo Wibowo**

Equity Research Analyst

azis@kiwoom.co.id | 021 5010 5800**Miftahul Khaer**

Equity Research Analyst

khaer.miftahul@kiwoom.co.id | 021 5010 5800**Vicky Rosalinda**

Equity Research Analyst

vicky.rosalinda@kiwoom.co.id | 021 5010 5800**OTHER DISCLOSURES**

All Kiwoom's research reports made available to clients are simultaneously available on our own website <http://www.kiwoom.co.id/>. Not all research content is redistributed, e-mailed or made available to third-party aggregators. For all research reports available on a particular stock, please contact your sales representative. Any data discrepancies in this report could be the result of different calculations and/or adjustments.

DISCLAIMER This report has been prepared and issued by PT Kiwoom Sekuritas Indonesia. Information has been obtained from sources believed to be reliable but Kiwoom Securities do not warrant its completeness or accuracy. Forward-looking information or statements in this report contain information that is based on forecast of future results, estimates of amounts not yet determinable, assumptions, and therefore involve known and unknown risks and uncertainties which may cause the actual results, performance or achievements of their subject matter to be materially different from current expectations.

To the fullest extent allowed by law, PT Kiwoom Sekuritas Indonesia shall not be liable for any direct, indirect or consequential losses, loss of profits, damages, costs or expenses incurred or suffered by any person or organization arising from reliance on or use of any information contained on this report. The information that we provide should not be construed in any manner whatsoever as, personalized advice.

No mention of a particular security in this report constitutes a recommendation to buy, sell or hold that or any security, or that any particular security, portfolio of securities, transaction or investment strategy is suitable for any specific person. This report is being supplied to you solely for your information and may not be reproduced by, further distributed to or published in whole or in part by, any other person.