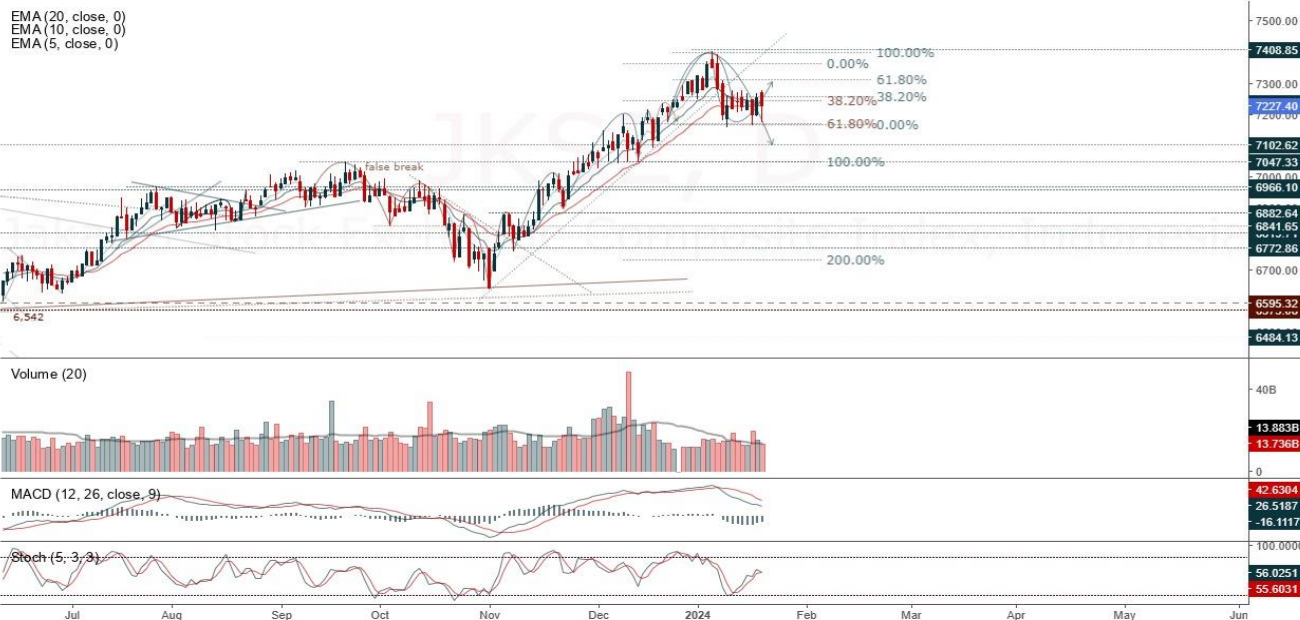


**JCI Range Today 7,152 – 7,162 (Support), 7,277 – 7,293 (Resistance)**

Jakarta Stock Exchange Composite Index, Indonesia, Jakarta:JKSE, D



**Jakarta Composite Index**, JCI closed negative and moving sideways trend. Indicator from stochastic is neutral, MACD histogram is moving negative but positive direction (line is bearish) and volume is decreasing. Bearish scenario: If it moves bearish again, JCI is expected to weaken again to the support range of 7,152 – 7,162. Bullish scenario: If JCI is able to move bullish, JCI has a chance to reach resistance 7,277 – 7,293.

**Stock Pick Today: AKRA, BIRD, EXCL, ICBP**

## AKRA

Akr Corporindo Tbk, Indonesia, Jakarta:AKRA, D

EMA (13, close, 0)  
EMA (34, close, 0)



**(AKRA).** Price closed higher and still in uptrend. Price has opportunity to continue to the next resistance. Stochastic is bullish, MACD histogram is moving positive (line is bullish) and volume is neutral. Confirm buy if the next candle returns bullish or buy on support if it goes down first. Be careful if you fail to stay above the support level or become a support breakdown. **(Trading Buy)**

### TRADING STRATEGY:

1. Target Price: The price has a bullish opportunity to test the resistance level 1,660. If it breaks level 1,660 then the price will go to level 1,680. We recommend to be careful if the price fails to break through or turn around the support area.

2. Stop Loss: To minimize the risk of loss, we recommend placing a stop loss at level 1,580.

Entry Buy : 1,595 – 1,625  
Target Price : 1,660 – 1,680  
Support : 1,585 – 1,595  
Cut loss : 1,580

**BIRD**

Blue Bird Tbk, Indonesia, Jakarta:BIRD, D

EMA (13, close, 0)  
EMA (34, close, 0)



**(BIRD).** Price closed higher and transition pattern potential. Price has the opportunity strengthen to the next resistance. Stochastic is bullish, MACD histogram is moving positive (line is bullish) and volume is increasing. Confirm buy if the next candle returns bullish or buy on support if it goes down first. Be careful if you fail to stay above the support level or become a support breakdown. **(Trading Buy)**

**TRADING STRATEGY:**

1.Target Price: The price has a bullish opportunity to test the resistance level 1,900. If it breaks level 1,900 then the price will go to level 1,920. We recommend to be careful if the price fails to break through or turn around the support area.

2. Stop Loss: To minimize the risk of loss, we recommend placing a stop loss at level 1,805.

Entry Buy : 1,825 – 1,860  
Target Price : 1,900 – 1,920  
Support : 1,810 – 1,825  
Cut loss : 1,805

**EXCL**

XL Axiata Tbk PT, Indonesia, Jakarta:EXCL, D

EMA (13, close, 0)  
EMA (34, close, 0)



**(EXCL).** Price closed higher and still in uptrend. Price has the opportunity strengthen to the nearest resistance. Stochastic is neutral, MACD histogram is positive (line is bullish) and volume is increasing significantly. Confirm buy if the next candle returns bullish or buy on support if it goes down first. Be careful if you fail to stay above the support level or become a support breakdown. **(Trading Buy)**

**TRADING STRATEGY:**

1.Target Price: The price has a bullish opportunity to test the resistance level 2,420. If it breaks level 2,420 then the price will go to level 2,460. We recommend to be careful if the price fails to break through or turn around the support area.

2. Stop Loss: To minimize the risk of loss, we recommend placing a stop loss at level 2,300.

Entry Buy : 2,320 – 2,370  
Target Price : 2,420 – 2,460  
Support : 2,310 – 2,320  
Cut loss : 2,300

**ICBP**

Indofood Cbp Sukses Makmur Tbk, Indonesia, Jakarta:ICBP, D

EMA (13, close, 0)  
EMA (34, close, 0)



**(ICBP).** Price closed higher and breakout resistance. Price has the opportunity strengthen to the nearest resistance. Stochastic is golden cross, MACD histogram is positive (line is bullish) and volume is increasing. Confirm buy if the next candle returns bullish or buy on support if it goes down first. Be careful if you fail to stay above the support level or become a support breakdown. **(Trading Buy)**

**TRADING STRATEGY:**

1. Target Price: The price has a bullish opportunity to test the resistance level 11,775. If it breaks level 11,775 then the price will go to level 11,875. We recommend to be careful if the price fails to break through or turn around the support area.

2. Stop Loss: To minimize the risk of loss, we recommend placing a stop loss at level 11,275.

Entry Buy : 11,350 – 11,550  
Target Price : 11,775 – 11,875  
Support : 11,300 – 11,350  
Cut loss : 11,275

## Forecast – Technical Analysis

Ticker	MA5	RSI Rec	MACD Trend	Recomm.	Pivot Point	Support		Resistance		Stop Loss Level
						1	2	1	2	
JCI	Positive	Trading	Negative	Hold	7,225	7,200	7,125	7,300	7,350	7,025
ACES	Positive	Overbought	Positive	Hold	800	785	770	815	830	755
ADRO	Positive	Trading	Positive	Spec. Buy	2,450	2,420	2,400	2,470	2,500	2,365
AKRA	Negative	Overbought	Positive	Sell	1,615	1,590	1,570	1,635	1,660	1,545
AMRT	Negative	Oversold	Negative	Spec. Buy	2,665	2,625	2,605	2,685	2,725	2,565
ANTM	Positive	Trading	Negative	Hold	1,665	1,625	1,600	1,690	1,730	1,575
ARTO	Negative	Overbought	Positive	Sell	3,460	3,345	3,260	3,545	3,660	3,210
ASII	Positive	Oversold	Negative	Spec. Buy	5,350	5,325	5,250	5,425	5,450	5,175
BBCA	Positive	Overbought	Negative	Sell	9,700	9,625	9,525	9,800	9,875	9,375
BBNI	Positive	Trading	Negative	Hold	5,525	5,500	5,425	5,600	5,625	5,350
BBRI	Positive	Overbought	Negative	Sell	5,775	5,725	5,675	5,825	5,875	5,575
BBTN	Positive	Overbought	Positive	Hold	1,350	1,330	1,315	1,365	1,385	1,295
BMRI	Positive	Overbought	Positive	Hold	6,500	6,475	6,400	6,575	6,600	6,300
BRIS	Positive	Overbought	Positive	Hold	2,020	2,000	1,975	2,045	2,065	1,945
BRPT	Negative	Oversold	Negative	Spec. Buy	1,100	1,075	1,040	1,135	1,160	1,025
BUKA	Positive	Oversold	Negative	Spec. Buy	196	194	191	199	201	188
CPIN	Negative	Oversold	Negative	Spec. Buy	4,670	4,630	4,590	4,710	4,750	4,520
EMTK	Positive	Oversold	Negative	Spec. Buy	545	535	525	555	565	515
ESSA	Positive	Trading	Positive	Spec. Buy	580	570	555	595	605	545
EXCL	Negative	Overbought	Positive	Sell	2,350	2,280	2,220	2,410	2,480	2,185
GGRM	Positive	Trading	Positive	Spec. Buy	20,300	20,200	20,000	20,500	20,600	19,700
GOTO	Positive	Trading	Negative	Hold	87	86	84	89	90	83
HRUM	Positive	Trading	Negative	Hold	1,315	1,300	1,285	1,330	1,345	1,265
ICBP	Negative	Overbought	Positive	Sell	11,475	11,300	11,150	11,625	11,800	10,975
INCO	Positive	Oversold	Negative	Spec. Buy	4,125	4,060	4,015	4,170	4,235	3,955
INDF	Negative	Trading	Positive	Hold	6,425	6,375	6,300	6,500	6,550	6,200
INDY	Positive	Trading	Positive	Spec. Buy	1,540	1,515	1,485	1,570	1,595	1,460
INKP	Positive	Trading	Negative	Hold	8,000	7,950	7,850	8,100	8,150	7,725
INTP	Positive	Trading	Negative	Hold	9,200	9,150	9,100	9,250	9,300	8,950
ITMG	Negative	Trading	Positive	Hold	26,950	26,675	26,325	27,300	27,575	25,925
KLBF	Positive	Oversold	Negative	Spec. Buy	1,570	1,555	1,545	1,580	1,595	1,520
MAPI	Negative	Overbought	Positive	Sell	1,935	1,905	1,880	1,960	1,990	1,850
MDKA	Negative	Trading	Positive	Hold	2,710	2,640	2,610	2,740	2,810	2,570
MEDC	Positive	Trading	Positive	Spec. Buy	1,250	1,225	1,205	1,270	1,295	1,185
PGAS	Negative	Trading	Positive	Hold	1,150	1,130	1,120	1,160	1,180	1,100
PTBA	Negative	Trading	Positive	Hold	2,635	2,615	2,595	2,655	2,675	2,555
SCMA	Positive	Trading	Negative	Hold	157	155	151	161	163	149
SIDO	Negative	Trading	Negative	Sell	520	515	515	520	525	505
SMGR	Positive	Oversold	Negative	Spec. Buy	6,050	6,025	5,975	6,100	6,125	5,900
SRTG	Positive	Trading	Negative	Hold	1,620	1,600	1,585	1,635	1,655	1,560
TBIG	Positive	Oversold	Negative	Spec. Buy	1,860	1,815	1,755	1,920	1,965	1,725
TLKM	Positive	Trading	Negative	Hold	3,935	3,910	3,865	3,980	4,005	3,805
TOWR	Positive	Trading	Negative	Hold	945	930	925	950	965	910
TPIA	Negative	Trading	Negative	Sell	4,435	4,200	4,085	4,550	4,785	4,025
UNTR	Negative	Overbought	Positive	Sell	24,100	23,900	23,625	24,375	24,575	23,275
UNVR	Positive	Oversold	Negative	Spec. Buy	3,265	3,225	3,175	3,315	3,355	3,125

## OUR TEAM

**Sukarno Alatas**

Head of Equity Research

[sukarno@kiwoom.co.id](mailto:sukarno@kiwoom.co.id) | 021 5010 5800**Abdul Azis Setyo Wibowo**

Equity Research Analyst

[azis@kiwoom.co.id](mailto:azis@kiwoom.co.id) | 021 5010 5800**Miftahul Khaer**

Equity Research Analyst

[khaer.miftahul@kiwoom.co.id](mailto:khaer.miftahul@kiwoom.co.id) | 021 5010 5800**Vicky Rosalinda**

Equity Research Analyst

[vicky.rosalinda@kiwoom.co.id](mailto:vicky.rosalinda@kiwoom.co.id) | 021 5010 5800**Wahyu Saputra**

Research Associate

[wahyu.saputra@kiwoom.co.id](mailto:wahyu.saputra@kiwoom.co.id) | 021 5010 5800**OTHER DISCLOSURES**

All Kiwoom's research reports made available to clients are simultaneously available on our own website <http://www.kiwoom.co.id/>. Not all research content is redistributed, e-mailed or made available to third-party aggregators. For all research reports available on a particular stock, please contact your sales representative. Any data discrepancies in this report could be the result of different calculations and/or adjustments.

**DISCLAIMER** This report has been prepared and issued by PT Kiwoom Sekuritas Indonesia. Information has been obtained from sources believed to be reliable but Kiwoom Securities do not warrant its completeness or accuracy. Forward-looking information or statements in this report contain information that is based on forecast of future results, estimates of amounts not yet determinable, assumptions, and therefore involve known and unknown risks and uncertainties which may cause the actual results, performance or achievements of their subject matter to be materially different from current expectations.

To the fullest extent allowed by law, PT Kiwoom Sekuritas Indonesia shall not be liable for any direct, indirect or consequential losses, loss of profits, damages, costs or expenses incurred or suffered by any person or organization arising from reliance on or use of any information contained on this report. The information that we provide should not be construed in any manner whatsoever as, personalized advice.

No mention of a particular security in this report constitutes a recommendation to buy, sell or hold that or any security, or that any particular security, portfolio of securities, transaction or investment strategy is suitable for any specific person. This report is being supplied to you solely for your information and may not be reproduced by, further distributed to or published in whole or in part by, any other person.