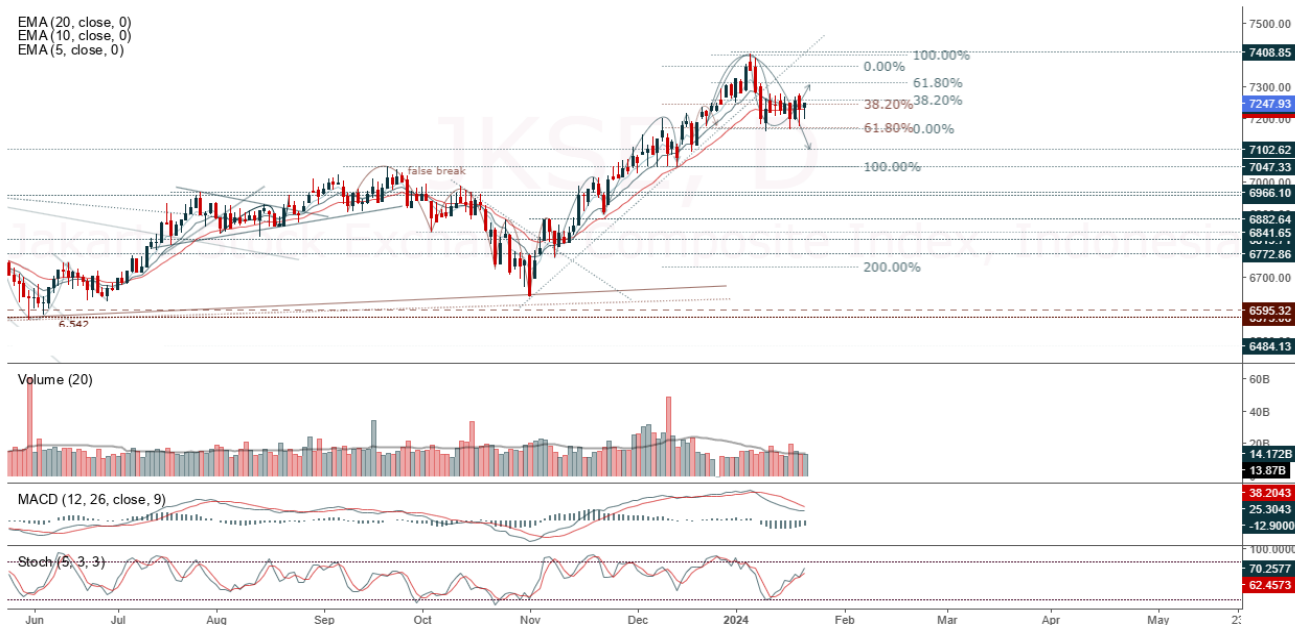


JCI Range Today 7,185 – 7,201 (Support), 7,293 – 7,311 (Resistance)

Jakarta Stock Exchange Composite Index, Indonesia, Jakarta:JKSE, D

EMA (20, close, 0)
EMA (10, close, 0)
EMA (5, close, 0)



Jakarta Composite Index, JCI closed positive and moving sideways trend. Indicator from stochastic is neutral, MACD histogram is moving negative but positive direction (line is bearish) and volume is decreasing. Bearish scenario: If it moves bearish again, JCI is expected to weaken again to the support range of 7,185 – 7,201. Bullish scenario: If JCI is able to move bullish, JCI has a chance to reach resistance 7,293 – 7,311.

Stock Pick Today: ACES, ADMR, AMMN, AVIA

ACES

Ace Hardware Indonesia Tbk, Indonesia, Jakarta:ACES, D

EMA (13, close, 0)
EMA (34, close, 0)



(ACES). Price closed higher and break resistance. Price has opportunity to continue to the next resistance. Stochastic is bullish, MACD histogram is moving positive (line is bullish) and volume is increasing. Confirm buy if the next candle returns bullish or buy on support if it goes down first. Be careful if you fail to stay above the support level or become a support breakdown. **(Trading Buy)**

TRADING STRATEGY:

1. Target Price: The price has a bullish opportunity to test the resistance level 840. If it breaks level 840 then the price will go to level 855. We recommend to be careful if the price fails to break through or turn around the support area.

2. Stop Loss: To minimize the risk of loss, we recommend placing a stop loss at level 805.

Entry Buy : 815 – 825
Target Price : 840 – 855
Support : 810 – 815
Cut loss : 805

ADMR

Adaro Minerals Indonesia Tbk PT, Indonesia, Jakarta:ADMR, D

EMA (13, close, 0)
EMA (34, close, 0)



(ADMR). Price closed higher and break dynamic resistance. Price has the opportunity strengthen to the nearest resistance. Stochastic is golden cross, MACD histogram is moving positive direction (line is flat) and volume is increasing. Confirm buy if the next candle returns bullish or buy on support if it goes down first. Be careful if you fail to stay above the support level or become a support breakdown.
(Trading Buy)

TRADING STRATEGY:

1. Target Price: The price has a bullish opportunity to test the resistance level 1,380. If it breaks level 1,380 then the price will go to level 1,400. We recommend to be careful if the price fails to break through or turn around the support area.
2. Stop Loss: To minimize the risk of loss, we recommend placing a stop loss at level 1,310.

Entry Buy : 1,330 – 1,355
Target Price : 1,380 – 1,400
Support : 1,315 – 1,330
Cut loss : 1,310

AMMN

Amman Mineral Internasional Tbk PT, Indonesia, Jakarta:AMMN, D

EMA (13, close, 0)
EMA (34, close, 0)



(AMMN). Price closed higher with bullish candle. Price has the opportunity strengthen to the nearest resistance. Stochastic is still bullish, MACD histogram is positive (line is bullish) and volume is increasing. Confirm buy if the next candle returns bullish or buy on support if it goes down first. Be careful if you fail to stay above the support level or become a support breakdown. **(Trading Buy)**

TRADING STRATEGY:

1.Target Price: The price has a bullish opportunity to test the resistance level 7,800. If it breaks level 7,800 then the price will go to level 7,925. We recommend to be careful if the price fails to break through or turn around the support area.

2. Stop Loss: To minimize the risk of loss, we recommend placing a stop loss at level 7,450.

Entry Buy : 7,575 – 7,675
Target Price : 7,800 – 7,925
Support : 7,475 – 7,575
Cut loss : 7,450

AVIA

Avia Avian PT Tbk, Indonesia, Jakarta:AVIA, D

EMA (13, close, 0)
EMA (34, close, 0)



(AVIA). Price closed higher and break resistance. Price has opportunity to continue to the next resistance. Stochastic is bullish, MACD histogram is moving positive (line is bullish) and volume is increasing. Confirm buy if the next candle returns bullish or buy on support if it goes down first. Be careful if you fail to stay above the support level or become a support breakdown. **(Trading Buy)**

TRADING STRATEGY:

1. Target Price: The price has a bullish opportunity to test the resistance level 590. If it breaks level 590 then the price will go to level 600. We recommend to be careful if the price fails to break through or turn around the support area.

2. Stop Loss: To minimize the risk of loss, we recommend placing a stop loss at level 555.

Entry Buy : 570 – 580
Target Price : 590 – 600
Support : 560 – 570
Cut loss : 555

Forecast – Technical Analysis

Ticker	MA5	RSI Rec	MACD Trend	Recomm.	Pivot Point	Support		Resistance		Stop Loss Level
						1	2	1	2	
JCI	Positive	Trading	Negative	Hold	7,225	7,225	7,175	7,275	7,300	7,075
ACES	Positive	Overbought	Positive	Hold	820	810	800	830	840	785
ADRO	Positive	Oversold	Negative	Spec. Buy	2,370	2,330	2,280	2,420	2,460	2,245
AKRA	Negative	Overbought	Positive	Sell	1,650	1,630	1,610	1,670	1,690	1,585
AMRT	Positive	Trading	Negative	Hold	2,700	2,670	2,620	2,750	2,780	2,580
ANTM	Negative	Trading	Negative	Sell	1,630	1,605	1,585	1,650	1,675	1,560
ARTO	Negative	Overbought	Positive	Sell	3,615	3,540	3,475	3,680	3,755	3,425
ASII	Positive	Oversold	Negative	Spec. Buy	5,150	5,075	5,025	5,200	5,275	4,935
BBCA	Positive	Overbought	Negative	Sell	9,525	9,450	9,375	9,600	9,675	9,225
BBNI	Positive	Trading	Negative	Hold	5,475	5,400	5,325	5,550	5,625	5,225
BBRI	Positive	Trading	Negative	Hold	5,700	5,650	5,600	5,750	5,800	5,525
BBTN	Negative	Overbought	Positive	Sell	1,350	1,325	1,295	1,380	1,405	1,275
BMRI	Positive	Overbought	Positive	Hold	6,500	6,475	6,400	6,575	6,600	6,300
BRIS	Negative	Overbought	Positive	Sell	2,135	2,080	2,035	2,180	2,235	2,005
BRPT	Negative	Trading	Negative	Sell	1,105	1,095	1,075	1,125	1,135	1,060
BUKA	Positive	Oversold	Negative	Spec. Buy	189	185	177	197	201	174
CPIN	Positive	Oversold	Negative	Spec. Buy	4,550	4,510	4,450	4,610	4,650	4,385
EMTK	Positive	Oversold	Negative	Spec. Buy	530	530	515	545	545	510
ESSA	Positive	Trading	Positive	Spec. Buy	580	565	545	600	615	535
EXCL	Negative	Overbought	Positive	Sell	2,415	2,385	2,355	2,445	2,475	2,315
GGRM	Positive	Oversold	Negative	Spec. Buy	20,100	20,025	19,925	20,200	20,275	19,625
GOTO	Positive	Trading	Negative	Hold	86	85	84	87	88	83
HRUM	Positive	Oversold	Negative	Spec. Buy	1,260	1,230	1,195	1,295	1,325	1,175
ICBP	Negative	Overbought	Positive	Sell	11,350	11,300	11,175	11,475	11,525	11,000
INCO	Positive	Oversold	Negative	Spec. Buy	3,995	3,900	3,815	4,080	4,175	3,760
INDF	Positive	Trading	Positive	Spec. Buy	6,400	6,375	6,325	6,450	6,475	6,225
INDY	Positive	Trading	Negative	Hold	1,435	1,410	1,380	1,465	1,490	1,360
INKP	Positive	Oversold	Negative	Spec. Buy	7,800	7,625	7,450	7,975	8,150	7,325
INTP	Positive	Oversold	Negative	Spec. Buy	9,025	8,950	8,875	9,100	9,175	8,725
ITMG	Positive	Trading	Negative	Hold	26,075	25,775	25,500	26,350	26,650	25,125
KLBF	Positive	Oversold	Negative	Spec. Buy	1,550	1,540	1,515	1,575	1,585	1,490
MAPI	Negative	Overbought	Positive	Sell	1,990	1,950	1,920	2,020	2,060	1,890
MDKA	Negative	Trading	Positive	Hold	2,645	2,565	2,495	2,715	2,795	2,455
MEDC	Positive	Trading	Positive	Spec. Buy	1,190	1,170	1,155	1,205	1,225	1,135
PGAS	Positive	Trading	Positive	Spec. Buy	1,120	1,110	1,100	1,130	1,140	1,080
PTBA	Positive	Trading	Negative	Hold	2,550	2,510	2,480	2,580	2,620	2,445
SCMA	Negative	Trading	Positive	Hold	160	157	153	164	167	151
SIDO	Positive	Trading	Negative	Hold	510	498	489	520	530	481
SMGR	Positive	Oversold	Negative	Spec. Buy	5,975	5,900	5,800	6,075	6,150	5,700
SRTG	Positive	Trading	Negative	Hold	1,600	1,580	1,555	1,625	1,645	1,535
TBIG	Positive	Trading	Negative	Hold	1,965	1,940	1,920	1,985	2,010	1,890
TLKM	Positive	Trading	Negative	Hold	3,970	3,925	3,870	4,025	4,070	3,810
TOWR	Positive	Trading	Negative	Hold	960	955	940	975	980	925
TPIA	Negative	Trading	Negative	Sell	5,200	4,755	4,385	5,575	6,025	4,315
UNTR	Positive	Trading	Positive	Spec. Buy	22,950	22,475	21,925	23,500	23,975	21,600
UNVR	Positive	Oversold	Negative	Spec. Buy	3,165	3,125	3,095	3,195	3,235	3,045

OUR TEAM

Sukarno Alatas

Head of Equity Research

sukarno@kiwoom.co.id | 021 5010 5800**Abdul Azis Setyo Wibowo**

Equity Research Analyst

azis@kiwoom.co.id | 021 5010 5800**Miftahul Khaer**

Equity Research Analyst

khaer.miftahul@kiwoom.co.id | 021 5010 5800**Vicky Rosalinda**

Equity Research Analyst

vicky.rosalinda@kiwoom.co.id | 021 5010 5800**Wahyu Saputra**

Research Associate

wahyu.saputra@kiwoom.co.id | 021 5010 5800**OTHER DISCLOSURES**

All Kiwoom's research reports made available to clients are simultaneously available on our own website <http://www.kiwoom.co.id/>. Not all research content is redistributed, e-mailed or made available to third-party aggregators. For all research reports available on a particular stock, please contact your sales representative. Any data discrepancies in this report could be the result of different calculations and/or adjustments.

DISCLAIMER This report has been prepared and issued by PT Kiwoom Sekuritas Indonesia. Information has been obtained from sources believed to be reliable but Kiwoom Securities do not warrant its completeness or accuracy. Forward-looking information or statements in this report contain information that is based on forecast of future results, estimates of amounts not yet determinable, assumptions, and therefore involve known and unknown risks and uncertainties which may cause the actual results, performance or achievements of their subject matter to be materially different from current expectations.

To the fullest extent allowed by law, PT Kiwoom Sekuritas Indonesia shall not be liable for any direct, indirect or consequential losses, loss of profits, damages, costs or expenses incurred or suffered by any person or organization arising from reliance on or use of any information contained on this report. The information that we provide should not be construed in any manner whatsoever as, personalized advice.

No mention of a particular security in this report constitutes a recommendation to buy, sell or hold that or any security, or that any particular security, portfolio of securities, transaction or investment strategy is suitable for any specific person. This report is being supplied to you solely for your information and may not be reproduced by, further distributed to or published in whole or in part by, any other person.