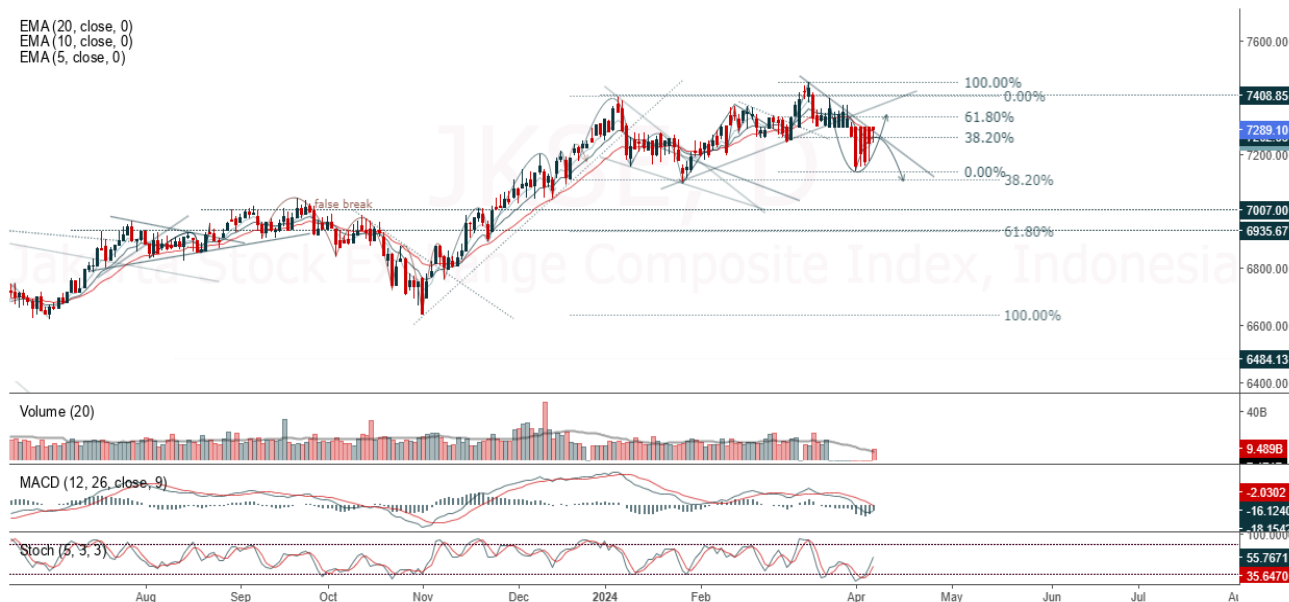


**JCI Range Today 7,239 – 7,254 (Support), 7,316 – 7,331 (Resistance)**

Jakarta Stock Exchange Composite Index, Indonesia, Jakarta:JKSE, D

EMA(20, close, 0)  
EMA(10, close, 0)  
EMA(5, close, 0)



**Jakarta Composite Index**, Price closed higher and testing resistance. Indicator from stochastic is still bullish, MACD histogram is moving positive direction (line is golden cross potential) and volume is neutral. Bearish scenario: If it moves bearish again, JCI is expected to weaken again to the support range of 7,239 – 7,254. Bullish scenario: If JCI is able to move bullish, JCI has the opportunity to break resistance 7,316 – 7,331.

**Stock Pick Today: ASII, AUTO, CFIN, TUGU**

## ASII

Astra International Tbk, Indonesia, Jakarta:ASII, D



**(ASII).** Price closed higher and breakup minor trendline resistance. Price has the opportunity strengthen to the next resistance. Stochastic is golden cross, MACD histogram is moving positive direction (line is golden cross potential) and volume is increasing. Confirm buy if the next candle returns bullish or buy on support if it goes down first. Be careful if you fail to stay above the support level or become a support breakdown. **(Trading Buy)**

### TRADING STRATEGY:

1. **Target Price:** The price has a bullish opportunity to test the resistance level 5,425. If it breaks level 5,425 then the price will go to level 5,525. We recommend to be careful if the price fails to break through or turn around the support area.

2. **Stop Loss:** To minimize the risk of loss, we recommend placing a stop loss at level 5,125.

Entry Buy : 5,175 – 5,275  
 Target Price : 5,425 – 5,525  
 Support : 5,150 – 5,175  
 Cut loss : 5,125

## AUTO

Astra Otoparts Tbk, Indonesia, Jakarta:AUTO, D



**(AUTO).** Price closed positive and breakup trendline resistance. Price has the opportunity strengthen to the next resistance. Stochastic is golden cross, MACD histogram is moving positive direction (line is golden cross potential) and volume is increasing significantly. Confirm buy if the next candle returns bullish or buy on support if it goes down first. Be careful if you fail to stay above the support level or become a support breakdown. **(Trading Buy)**

### TRADING STRATEGY:

1. **Target Price:** The price has a bullish opportunity to test the resistance level 2,250. If it breaks level 2,250 then the price will go to level 2,290. We recommend to be careful if the price fails to break through or turn around the support area.

2. **Stop Loss:** To minimize the risk of loss, we recommend placing a stop loss at level 2,160.

Entry Buy : 2,180 – 2,210  
 Target Price : 2,250 – 2,290  
 Support : 2,170 – 2,180  
 Cut loss : 2,160

**CFIN**

Clipan Finance Indonesia Tbk, Indonesia, Jakarta:CFIN, D



**(CFIN).** Price closed higher and breakup dynamic resistance at EMA 5 & 10. Price has the opportunity strengthen to the next resistance. Stochastic is still bullish, MACD histogram is moving positive direction (line is golden cross potential) and volume is increasing. Confirm buy if the next candle returns bullish or buy on support if it goes down first. Be careful if you fail to stay above the support level or become a support breakdown. **(Trading Buy)**

**TRADING STRATEGY:**

1. **Target Price:** The price has a bullish opportunity to test the resistance level 535. If it breaks level 535 then the price will go to level 550. We recommend to be careful if the price fails to break through or turn around the support area.

2. **Stop Loss:** To minimize the risk of loss, we recommend placing a stop loss at level 500.

Entry Buy : 510 – 520  
Target Price : 535 – 550  
Support : 505 – 510  
Cut loss : 500

## TUGU

Asuransi Tugu Pratama Indonesia Tbk PT, Indonesia, Jakarta:TUGU, D



**(TUGU).** Price closed higher and breakout resistance. Price has the opportunity strengthen to the next resistance. Stochastic is still bullish, MACD histogram is moving positive (line is bullish) and volume is increasing. Confirm buy if the next candle returns bullish or buy on support if it goes down first. Be careful if you fail to stay above the support level or become a support breakdown. **(Trading Buy)**

### TRADING STRATEGY:

1. **Target Price:** The price has a bullish opportunity to test the resistance level 1,300. If it breaks level 1,300 then the price will go to level 1,330. We recommend to be careful if the price fails to break through or turn around the support area.

2. **Stop Loss:** To minimize the risk of loss, we recommend placing a stop loss at level 1,240.

Entry Buy : 1,250 – 1,275  
 Target Price : 1,300 – 1,330  
 Support : 1,245 – 1,250  
 Cut loss : 1,240

## Forecast – Technical Analysis

Ticker	MA5	RSI Rec	MACD Trend	Recomm.	Pivot Point	Support		Resistance		Stop Loss Level
						1	2	1	2	
JCI	Positive	Trading	Negative	Hold	7,275	7,225	7,200	7,300	7,325	7,100
ACES	Negative	Overbought	Positive	Sell	955	950	940	965	970	925
ADRO	Positive	Trading	Negative	Hold	2,695	2,670	2,645	2,720	2,745	2,605
AKRA	Negative	Trading	Negative	Sell	1,750	1,730	1,705	1,775	1,795	1,680
AMRT	Positive	Overbought	Negative	Sell	2,890	2,875	2,860	2,905	2,920	2,815
ANTM	Negative	Trading	Negative	Sell	1,665	1,655	1,635	1,685	1,695	1,610
ARTO	Positive	Trading	Positive	Spec. Buy	2,555	2,515	2,485	2,585	2,625	2,445
ASII	Negative	Trading	Negative	Sell	5,225	5,125	5,050	5,300	5,400	4,975
BBCA	Positive	Trading	Negative	Hold	9,900	9,825	9,775	9,950	10,025	9,625
BBNI	Positive	Oversold	Negative	Spec. Buy	5,325	5,275	5,250	5,350	5,400	5,175
BBRI	Positive	Oversold	Negative	Spec. Buy	5,650	5,600	5,575	5,675	5,725	5,500
BBTN	Positive	Trading	Negative	Hold	1,510	1,495	1,480	1,525	1,540	1,455
BMRI	Positive	Trading	Negative	Hold	6,850	6,800	6,775	6,875	6,925	6,675
BRIS	Positive	Trading	Negative	Hold	2,720	2,685	2,660	2,745	2,780	2,620
BRPT	Negative	Trading	Positive	Hold	990	965	940	1,015	1,040	925
BUKA	Positive	Trading	Positive	Spec. Buy	147	146	143	150	151	141
CPIN	Negative	Trading	Negative	Sell	5,325	5,250	5,200	5,375	5,450	5,125
EMTK	Positive	Trading	Positive	Spec. Buy	427	423	419	431	435	412
ESSA	Negative	Overbought	Positive	Sell	725	700	675	750	775	660
EXCL	Negative	Trading	Negative	Sell	2,335	2,295	2,265	2,365	2,405	2,230
GGRM	Positive	Trading	Positive	Spec. Buy	19,950	19,875	19,750	20,075	20,150	19,450
GOTO	Positive	Trading	Positive	Spec. Buy	68	68	66	70	70	65
HRUM	Negative	Overbought	Positive	Sell	1,445	1,425	1,390	1,480	1,500	1,370
ICBP	Positive	Trading	Positive	Spec. Buy	10,950	10,850	10,750	11,050	11,150	10,600
INCO	Negative	Trading	Negative	Sell	4,110	4,080	4,050	4,140	4,170	3,990
INDF	Negative	Trading	Positive	Hold	6,525	6,475	6,450	6,550	6,600	6,350
INKP	Negative	Overbought	Positive	Sell	9,650	9,475	9,375	9,750	9,925	9,225
INTP	Negative	Trading	Positive	Hold	8,650	8,625	8,575	8,700	8,725	8,450
ITMG	Negative	Trading	Negative	Sell	26,900	26,800	26,650	27,050	27,150	26,250
KLBF	Negative	Trading	Positive	Hold	1,490	1,480	1,470	1,500	1,510	1,450
MAPI	Negative	Trading	Positive	Hold	1,900	1,875	1,860	1,915	1,940	1,830
MBMA	Negative	Trading	Positive	Hold	565	550	525	590	605	515
MDKA	Negative	Overbought	Positive	Sell	2,655	2,580	2,525	2,710	2,785	2,485
MEDC	Negative	Overbought	Positive	Sell	1,570	1,545	1,530	1,585	1,610	1,505
MTEL	Negative	Trading	Positive	Hold	635	630	625	640	645	615
PGAS	Negative	Overbought	Positive	Sell	1,370	1,370	1,360	1,380	1,380	1,340
PGEO	Positive	Trading	Negative	Hold	1,195	1,175	1,165	1,205	1,225	1,150
PTBA	Positive	Overbought	Negative	Sell	2,930	2,915	2,900	2,945	2,960	2,855
PTMP	Positive	Oversold	Negative	Spec. Buy	157	151	147	161	167	144
SIDO	Negative	Overbought	Negative	Strong Sell	675	645	625	695	725	615
SMGR	Positive	Oversold	Positive	Buy	5,675	5,650	5,625	5,700	5,725	5,550
SRTG	Negative	Trading	Positive	Hold	1,500	1,480	1,465	1,515	1,535	1,445
TLKM	Positive	Oversold	Negative	Spec. Buy	3,435	3,420	3,405	3,450	3,465	3,355
TOWR	Positive	Trading	Positive	Spec. Buy	855	845	840	860	870	825
UNTR	Negative	Overbought	Positive	Sell	25,225	25,050	24,925	25,350	25,525	24,550
UNVR	Negative	Trading	Positive	Hold	2,700	2,670	2,650	2,720	2,750	2,610

## OUR TEAM

**Sukarno Alatas**

Head of Equity Research

[sukarno@kiwoom.co.id](mailto:sukarno@kiwoom.co.id) | 021 5010 5800

**Abdul Azis Setyo Wibowo**

Equity Research Analyst

[azis@kiwoom.co.id](mailto:azis@kiwoom.co.id) | 021 5010 5800

**Miftahul Khaer**

Equity Research Analyst

[khaer.miftahul@kiwoom.co.id](mailto:khaer.miftahul@kiwoom.co.id) | 021 5010 5800

**Vicky Rosalinda**

Equity Research Analyst

[vicky.rosalinda@kiwoom.co.id](mailto:vicky.rosalinda@kiwoom.co.id) | 021 5010 5800

**Wahyu Saputra**

Research Associate

[wahyu.saputra@kiwoom.co.id](mailto:wahyu.saputra@kiwoom.co.id) | 021 5010 5800



### OTHER DISCLOSURES

All Kiwoom's research reports made available to clients are simultaneously available on our own website <http://www.kiwoom.co.id/>. Not all research content is redistributed, e-mailed or made available to third-party aggregators. For all research reports available on a particular stock, please contact your sales representative. Any data discrepancies in this report could be the result of different calculations and/or adjustments.

**DISCLAIMER** This report has been prepared and issued by PT Kiwoom Sekuritas Indonesia. Information has been obtained from sources believed to be reliable but Kiwoom Securities do not warrant its completeness or accuracy. Forward-looking information or statements in this report contain information that is based on forecast of future results, estimates of amounts not yet determinable, assumptions, and therefore involve known and unknown risks and uncertainties which may cause the actual results, performance or achievements of their subject matter to be materially different from current expectations.

To the fullest extent allowed by law, PT Kiwoom Sekuritas Indonesia shall not be liable for any direct, indirect or consequential losses, loss of profits, damages, costs or expenses incurred or suffered by any person or organization arising from reliance on or use of any information contained on this report. The information that we provide should not be construed in any manner whatsoever as, personalized advice.

No mention of a particular security in this report constitutes a recommendation to buy, sell or hold that or any security, or that any particular security, portfolio of securities, transaction or investment strategy is suitable for any specific person. This report is being supplied to you solely for your information and may not be reproduced by, further distributed to or published in whole or in part by, any other person.