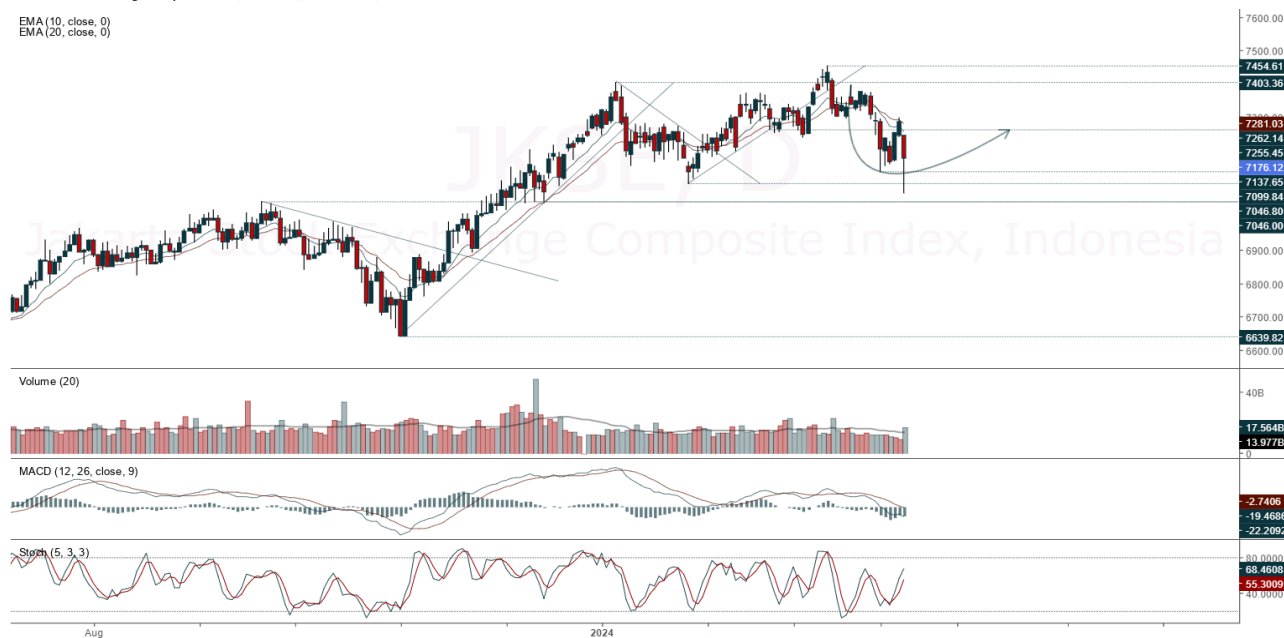


## JCI Range Today 7,045 – 7,066 (Support), 7,262 – 7,285 (Resistance)

Jakarta Stock Exchange Composite Index, Indonesia, Jakarta:JKSE, D

EMA (10, close, 0)  
EMA (20, close, 0)



**Jakarta Composite Index**, Price closed negative and breakdown dynamic resistance at EMA 5 & 10. Indicator from stochastic is still bullish, MACD histogram is moving negative (line is sloping) and volume is increasing. Bearish scenario: If it moves bearish again, JCI is expected to weaken again to the support range of 7,045 – 7,066. Bullish scenario: If JCI is able to move bullish, JCI has the opportunity to break resistance 7,262 – 7,285.

**Stock Pick Today: AKRA, HRTA, INCO, PTBA**

## AKRA

Akr Corporindo Tbk, Indonesia, Jakarta:AKRA, D  
EMA (10, close, 0)  
EMA (20, close, 0)



**(AKRA).** Price closed higher and breakup dynamic resistance at EMA 5 & 10. Price has the opportunity strengthen to the next resistance. Stochastic is bearish, MACD histogram is moving positive (line is golden cross) and volume is increasing significantly. Confirm buy if the next candle returns bullish or buy on support if it goes down first. Be careful if you fail to stay above the support level or become a support breakdown. **(Trading Buy)**

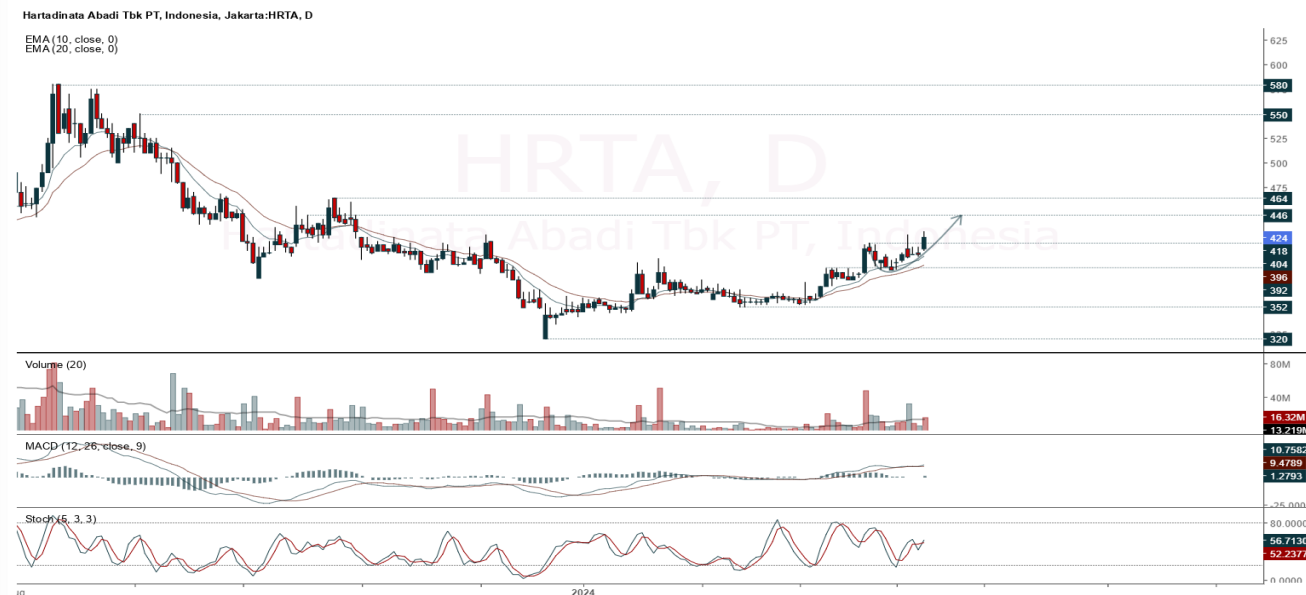
### TRADING STRATEGY:

1. **Target Price:** The price has a bullish opportunity to test the resistance level 1,845. If it breaks level 1,845 then the price will go to level 1,865. We recommend to be careful if the price fails to break through or turn around the support area.

2. **Stop Loss:** To minimize the risk of loss, we recommend placing a stop loss at level 1,785.

Entry Buy : 1,795 – 1,815  
Target Price : 1,845 – 1,865  
Support : 1,790 – 1,795  
Cut loss : 1,785

## HRTA



**(HRTA).** Price closed higher and breakout resistance. Price has the opportunity strengthen to the next resistance. Stochastic is golden cross, MACD histogram is moving positive (line is bullish) and volume is increasing. Confirm buy if the next candle returns bullish or buy on support if it goes down first. Be careful if you fail to stay above the support level or become a support breakdown. **(Trading Buy)**

### TRADING STRATEGY:

1. **Target Price:** The price has a bullish opportunity to test the resistance level 436. If it breaks level 436 then the price will go to level 446. We recommend to be careful if the price fails to break through or turn around the support area.

2. **Stop Loss:** To minimize the risk of loss, we recommend placing a stop loss at level 412.

Entry Buy : 418 – 424

Target Price : 436 – 446

Support : 414 – 418

Cut loss : 412

**INCO**



**(INCO).** Price closed higher and breakup minor trendline resistance. Price has the opportunity strengthen to the next resistance. Stochastic is golden cross, MACD histogram is moving positive (line is golden cross) and volume is increasing significantly. Confirm buy if the next candle returns bullish or buy on support if it goes down first. Be careful if you fail to stay above the support level or become a support breakdown. **(Trading Buy)**

**TRADING STRATEGY:**

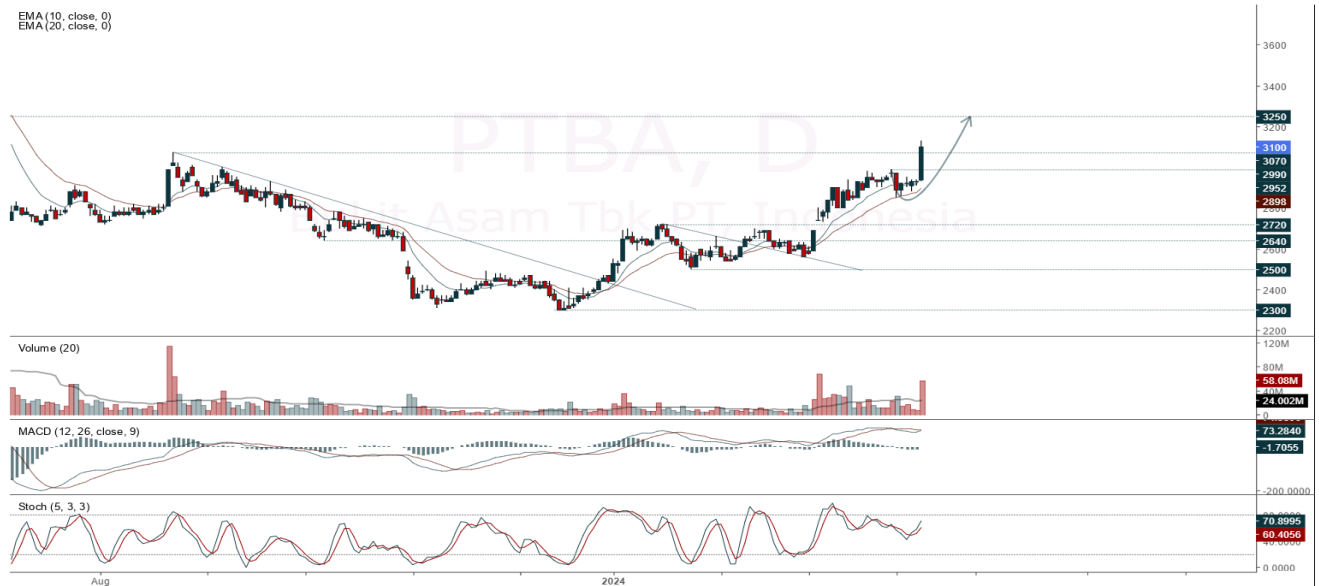
1. **Target Price:** The price has a bullish opportunity to test the resistance level 4,510. If it breaks level 4,510 then the price will go to level 4,560. We recommend to be careful if the price fails to break through or turn around the support area.

2. **Stop Loss:** To minimize the risk of loss, we recommend placing a stop loss at level 4,310.

Entry Buy : 4,350 – 4,400  
Target Price : 4,510 – 4,560  
Support : 4,320 – 4,350  
Cut loss : 4,310

**PTBA**

Bukit Asam Tbk PT, Indonesia, Jakarta:PTBA, D  
EMA (10, close, 0)  
EMA (20, close, 0)



**(PTBA).** Price closed higher and breakout resistance. Price has the opportunity strengthen to the next resistance. Stochastic is still bullish, MACD histogram is moving positive (line is golden cross) and volume is increasing significantly. Confirm buy if the next candle returns bullish or buy on support if it goes down first. Be careful if you fail to stay above the support level or become a support breakdown.  
**(Trading Buy)**

**TRADING STRATEGY:**

1. **Target Price:** The price has a bullish opportunity to test the resistance level 3,180. If it breaks level 3,180 then the price will go to level 3,240. We recommend to be careful if the price fails to break through or turn around the support area.

2. **Stop Loss:** To minimize the risk of loss, we recommend placing a stop loss at level 3,020.

Entry Buy : 3,060 – 3,100  
Target Price : 3,180 – 3,240  
Support : 3,030 – 3,060  
Cut loss : 3,020

## Forecast – Technical Analysis

Ticker	MA5	RSI Rec	MACD Trend	Recomm.	Pivot Point	Support		Resistance		Stop Loss Level
						1	2	1	2	
JCI	Negative	Trading	Negative	Sell	7,150	7,075	7,025	7,200	7,250	6,900
ACES	Negative	Overbought	Positive	Sell	915	900	865	950	965	855
ADRO	Negative	Overbought	Negative	Strong Sell	2,780	2,720	2,670	2,830	2,890	2,630
AKRA	Negative	Trading	Negative	Sell	1,790	1,720	1,665	1,845	1,915	1,640
AMRT	Positive	Trading	Negative	Hold	2,705	2,620	2,575	2,750	2,835	2,535
ANTM	Negative	Trading	Negative	Sell	1,745	1,685	1,615	1,815	1,875	1,590
ARTO	Positive	Oversold	Negative	Spec. Buy	2,315	2,250	2,145	2,420	2,485	2,115
ASII	Negative	Trading	Negative	Sell	5,150	5,075	5,025	5,200	5,275	4,950
BBCA	Positive	Trading	Negative	Hold	9,425	9,250	9,100	9,575	9,750	8,950
BBNI	Positive	Oversold	Negative	Spec. Buy	5,150	5,025	4,905	5,275	5,400	4,835
BBRI	Positive	Oversold	Negative	Spec. Buy	5,425	5,250	5,200	5,475	5,650	5,100
BBTN	Positive	Trading	Negative	Hold	1,425	1,385	1,345	1,465	1,505	1,325
BMRI	Positive	Trading	Negative	Hold	6,500	6,275	6,075	6,700	6,925	5,975
BRIS	Negative	Trading	Negative	Sell	2,575	2,510	2,455	2,630	2,695	2,420
BRPT	Negative	Trading	Positive	Hold	995	975	940	1,030	1,050	925
BUKA	Positive	Trading	Positive	Spec. Buy	137	131	121	147	153	119
CPIN	Negative	Trading	Negative	Sell	5,200	5,025	4,805	5,425	5,600	4,735
EMTK	Positive	Trading	Positive	Spec. Buy	419	410	399	430	439	393
ESSA	Negative	Overbought	Positive	Sell	730	705	675	760	785	665
EXCL	Negative	Trading	Negative	Sell	2,275	2,245	2,195	2,325	2,355	2,160
GGRM	Negative	Trading	Positive	Hold	19,800	19,725	19,500	20,025	20,100	19,200
GOTO	Negative	Trading	Positive	Hold	66	64	62	68	70	61
HRUM	Negative	Overbought	Positive	Sell	1,505	1,435	1,355	1,585	1,655	1,335
ICBP	Positive	Trading	Negative	Hold	10,275	9,925	9,725	10,475	10,825	9,575
INCO	Negative	Trading	Negative	Sell	4,275	4,100	3,945	4,430	4,605	3,885
INDF	Negative	Trading	Positive	Hold	6,250	6,100	6,000	6,350	6,500	5,900
INKP	Negative	Overbought	Positive	Sell	9,525	9,275	9,025	9,775	10,025	8,900
INTP	Positive	Trading	Positive	Spec. Buy	8,675	8,575	8,450	8,800	8,900	8,325
ITMG	Negative	Trading	Negative	Sell	27,350	27,225	26,950	27,625	27,750	26,525
KLBF	Negative	Trading	Positive	Hold	1,480	1,445	1,410	1,515	1,550	1,385
MAPI	Negative	Trading	Positive	Hold	1,820	1,805	1,790	1,835	1,850	1,765
MBMA	Negative	Overbought	Positive	Sell	580	565	540	605	620	530
MDKA	Negative	Overbought	Positive	Sell	2,795	2,700	2,595	2,900	2,995	2,555
MEDC	Negative	Overbought	Positive	Sell	1,605	1,575	1,535	1,645	1,675	1,510
MTEL	Negative	Trading	Positive	Hold	615	595	580	630	650	570
PGAS	Negative	Overbought	Positive	Sell	1,380	1,350	1,335	1,395	1,425	1,315
PGEO	Negative	Trading	Positive	Hold	1,185	1,170	1,145	1,210	1,225	1,130
PTBA	Negative	Overbought	Negative	Strong Sell	3,025	2,920	2,825	3,120	3,225	2,785
PTMP	Negative	Oversold	Negative	Spec. Buy	153	149	141	161	165	139
SIDO	Negative	Overbought	Positive	Sell	665	655	625	695	705	615
SMGR	Positive	Oversold	Negative	Spec. Buy	5,600	5,550	5,450	5,700	5,750	5,350
SRTG	Negative	Trading	Positive	Hold	1,525	1,485	1,435	1,575	1,615	1,410
TLKM	Positive	Oversold	Negative	Spec. Buy	3,230	3,175	3,100	3,305	3,360	3,050
TOWR	Positive	Trading	Positive	Spec. Buy	825	810	785	850	865	775
UNTR	Negative	Overbought	Positive	Sell	25,725	25,050	24,325	26,450	27,125	23,950
UNVR	Positive	Trading	Positive	Spec. Buy	2,580	2,525	2,490	2,615	2,670	2,450

## OUR TEAM

**Sukarno Alatas**

Head of Equity Research

[sukarno@kiwoom.co.id](mailto:sukarno@kiwoom.co.id) | 021 5010 5800

**Abdul Azis Setyo Wibowo**

Equity Research Analyst

[azis@kiwoom.co.id](mailto:azis@kiwoom.co.id) | 021 5010 5800

**Miftahul Khaer**

Equity Research Analyst

[khaer.miftahul@kiwoom.co.id](mailto:khaer.miftahul@kiwoom.co.id) | 021 5010 5800

**Vicky Rosalinda**

Equity Research Analyst

[vicky.rosalinda@kiwoom.co.id](mailto:vicky.rosalinda@kiwoom.co.id) | 021 5010 5800

**Wahyu Saputra**

Research Associate

[wahyu.saputra@kiwoom.co.id](mailto:wahyu.saputra@kiwoom.co.id) | 021 5010 5800



### OTHER DISCLOSURES

All Kiwoom's research reports made available to clients are simultaneously available on our own website <http://www.kiwoom.co.id/>. Not all research content is redistributed, e-mailed or made available to third-party aggregators. For all research reports available on a particular stock, please contact your sales representative. Any data discrepancies in this report could be the result of different calculations and/or adjustments.

**DISCLAIMER** This report has been prepared and issued by PT Kiwoom Sekuritas Indonesia. Information has been obtained from sources believed to be reliable but Kiwoom Securities do not warrant its completeness or accuracy. Forward-looking information or statements in this report contain information that is based on forecast of future results, estimates of amounts not yet determinable, assumptions, and therefore involve known and unknown risks and uncertainties which may cause the actual results, performance or achievements of their subject matter to be materially different from current expectations.

To the fullest extent allowed by law, PT Kiwoom Sekuritas Indonesia shall not be liable for any direct, indirect or consequential losses, loss of profits, damages, costs or expenses incurred or suffered by any person or organization arising from reliance on or use of any information contained on this report. The information that we provide should not be construed in any manner whatsoever as, personalized advice.

No mention of a particular security in this report constitutes a recommendation to buy, sell or hold that or any security, or that any particular security, portfolio of securities, transaction or investment strategy is suitable for any specific person. This report is being supplied to you solely for your information and may not be reproduced by, further distributed to or published in whole or in part by, any other person.