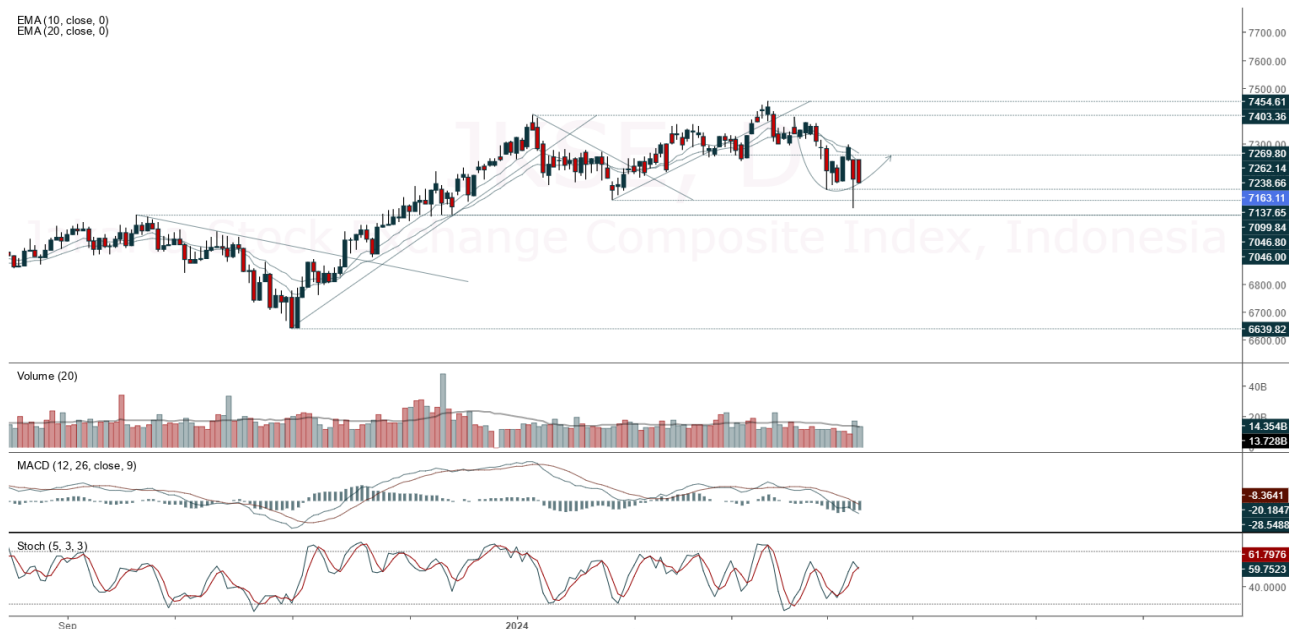


JCI Range Today 7,029 – 7,066 (Support), 7,197 – 7,234 (Resistance)

Jakarta Stock Exchange Composite Index, Indonesia, Jakarta:JKSE, D

EMA (10, close, 0)
EMA (20, close, 0)



Jakarta Composite Index, Price closed negative and testing dynamic resistance at EMA 10. Indicator from stochastic is death cross, MACD histogram is moving negative (line is sloping) and volume is neutral. Bearish scenario: If it moves bearish again, JCI is expected to weaken again to the support range of 7,029 – 7,066. Bullish scenario: If JCI is able to move bullish, JCI has the opportunity to break resistance 7,197 – 7,234.

Stock Pick Today: FILM, MAHA, PTRO, TKIM

FILM

MD Pictures Tbk PT, Indonesia, Jakarta: FILM, D

EMA (10, close, 0)
EMA (20, close, 0)



(FILM). Price closed higher and breakout resistance dynamic (FR 38.20%). Price has the opportunity strengthen to the next resistance. Stochastic is still bearish, MACD histogram is moving positive (line is bullish) and volume is increasing. Confirm buy if the next candle returns bullish or buy on support if it goes down first. Be careful if you fail to stay above the support level or become a support breakdown.

(Trading Buy)

TRADING STRATEGY:

1. **Target Price:** The price has a bullish opportunity to test the resistance level 5,125. If it breaks level 5,125 then the price will go to level 5,250. We recommend to be careful if the price fails to break through or turn around the support area.

2. **Stop Loss:** To minimize the risk of loss, we recommend placing a stop loss at level 4,950.

Entry Buy : 4,980 – 5,050
Target Price : 5,125 – 5,250
Support : 4,960 – 4,980
Cut loss : 4,950

MAHA

Mandiri Herindo Adiperkasa Tbk PT, Indonesia, Jakarta:MAHA, D

EMA (10, close, 0)
EMA (20, close, 0)



(MAHA). Price closed higher and breakout resistance. Price has the opportunity strengthen to the next resistance. Stochastic is still bullish, MACD histogram is moving positive (line is bullish) and volume is increasing. Confirm buy if the next candle returns bullish or buy on support if it goes down first. Be careful if you fail to stay above the support level or become a support breakdown. **(Trading Buy)**

TRADING STRATEGY:

1. **Target Price:** The price has a bullish opportunity to test the resistance level 222. If it breaks level 222 then the price will go to level 228. We recommend to be careful if the price fails to break through or turn around the support area.

2. **Stop Loss:** To minimize the risk of loss, we recommend placing a stop loss at level 208.

Entry Buy : 212 – 216
Target Price : 222 – 228
Support : 210 – 212
Cut loss : 208

PTRO

Petrosea Tbk, Indonesia, Jakarta:PTRO, D

EMA(10, close, 0)
EMA(20, close, 0)



(PTRO). Price closed higher with bullish candle. Price has the opportunity strengthen to the nearest resistance. Stochastic is neutral, MACD histogram is moving positive (line is bullish) and volume is increasing. Confirm buy if the next candle returns bullish or buy on support if it goes down first. Be careful if you fail to stay above the support level or become a support breakdown. **(Trading Buy)**

TRADING STRATEGY:

1. Target Price: The price has a bullish opportunity to test the resistance level 4,770. If it breaks level 4,770 then the price will go to level 4,820. We recommend to be careful if the price fails to break through or turn around the support area.

2. Stop Loss: To minimize the risk of loss, we recommend placing a stop loss at level 4,620.

Entry Buy : 4,660 – 4,700
Target Price : 4,770 – 4,820
Support : 4,630 – 4,660
Cut loss : 4,620

TKIM

Pabrik Kertas Tjiwi Kimia Tbk, Indonesia, Jakarta:TKIM, D



(TKIM). Price closed higher and testing resistance. Price is expected to test the nearest resistance and continue strengthening to the next resistance. Stochastic is neutral, MACD histogram is moving positive (line is bullish) and volume is increasing. Confirm buy if the next candle returns bullish or buy on support if it goes down first. Be careful if you fail to stay above the support level or become a support breakdown. **(Trading Buy)**

TRADING STRATEGY:

1. **Target Price:** The price has a bullish opportunity to test the resistance level 7,775. If it breaks level 7,775 then the price will go to level 7,875. We recommend to be careful if the price fails to break through or turn around the support area.

2. **Stop Loss:** To minimize the risk of loss, we recommend placing a stop loss at level 7,550.

Entry Buy : 7,600 – 7,675

Target Price : 7,775 – 7,875

Support : 7,575 – 7,600

Cut loss : 7,550

Forecast – Technical Analysis

Ticker	MA5	RSI Rec	MACD Trend	Recomm.	Pivot Point	Support		Resistance		Stop Loss Level
						1	2	1	2	
JCI	Positive	Oversold	Negative	Spec. Buy	7,175	7,125	7,075	7,225	7,275	6,975
ACES	Positive	Trading	Positive	Spec. Buy	920	905	900	925	940	885
ADRO	Negative	Overbought	Positive	Sell	2,785	2,740	2,705	2,820	2,865	2,665
AKRA	Positive	Overbought	Negative	Sell	1,805	1,765	1,720	1,850	1,890	1,695
AMRT	Positive	Oversold	Negative	Spec. Buy	2,765	2,710	2,655	2,820	2,875	2,615
ANTM	Negative	Overbought	Positive	Sell	1,810	1,770	1,740	1,840	1,880	1,710
ARTO	Positive	Oversold	Negative	Spec. Buy	2,225	2,095	1,985	2,335	2,465	1,955
ASII	Positive	Trading	Negative	Hold	5,150	5,100	5,075	5,175	5,225	4,985
BBCA	Positive	Oversold	Negative	Spec. Buy	9,575	9,475	9,425	9,625	9,725	9,275
BBNI	Positive	Oversold	Negative	Spec. Buy	5,275	5,200	5,175	5,300	5,375	5,100
BBRI	Positive	Oversold	Negative	Spec. Buy	5,400	5,300	5,200	5,500	5,600	5,125
BBTN	Positive	Trading	Negative	Hold	1,395	1,360	1,335	1,420	1,455	1,315
BMRI	Positive	Oversold	Negative	Spec. Buy	6,675	6,600	6,525	6,750	6,825	6,425
BRIS	Positive	Trading	Negative	Hold	2,530	2,455	2,390	2,595	2,670	2,350
BRPT	Positive	Trading	Positive	Spec. Buy	1,010	980	960	1,030	1,060	945
BUKA	Positive	Oversold	Positive	Buy	130	126	122	134	138	120
CPIN	Positive	Trading	Negative	Hold	5,125	4,975	4,915	5,175	5,325	4,840
EMTK	Positive	Oversold	Negative	Spec. Buy	405	392	379	418	431	373
ESSA	Negative	Overbought	Positive	Sell	740	720	695	765	785	685
EXCL	Positive	Trading	Negative	Hold	2,200	2,105	2,020	2,285	2,380	1,985
GGRM	Negative	Trading	Positive	Hold	19,725	19,600	19,500	19,825	19,950	19,200
GOTO	Positive	Trading	Positive	Spec. Buy	64	62	60	66	68	59
HRUM	Negative	Overbought	Positive	Sell	1,560	1,545	1,515	1,590	1,605	1,495
ICBP	Positive	Oversold	Negative	Spec. Buy	10,150	9,975	9,900	10,225	10,400	9,750
INCO	Negative	Overbought	Positive	Sell	4,350	4,245	4,150	4,445	4,550	4,085
INDF	Positive	Oversold	Negative	Spec. Buy	6,125	6,050	5,975	6,200	6,275	5,875
INKP	Negative	Overbought	Negative	Strong Sell	9,600	9,425	9,225	9,800	9,975	9,075
INTP	Positive	Trading	Positive	Spec. Buy	8,625	8,450	8,300	8,775	8,950	8,175
ITMG	Negative	Trading	Negative	Sell	25,800	25,675	25,500	25,975	26,100	25,125
KLBF	Negative	Trading	Positive	Hold	1,475	1,430	1,400	1,505	1,550	1,380
MAPI	Positive	Trading	Positive	Spec. Buy	1,810	1,780	1,760	1,830	1,860	1,735
MBMA	Negative	Overbought	Positive	Sell	565	540	505	600	625	499
MDKA	Negative	Overbought	Positive	Sell	2,855	2,775	2,685	2,945	3,025	2,640
MEDC	Negative	Overbought	Positive	Sell	1,590	1,560	1,525	1,625	1,655	1,500
MTEL	Positive	Oversold	Positive	Buy	600	590	585	605	615	575
PGAS	Negative	Overbought	Positive	Sell	1,385	1,370	1,350	1,405	1,420	1,330
PGEO	Negative	Trading	Positive	Hold	1,210	1,175	1,155	1,230	1,265	1,140
PTBA	Negative	Overbought	Positive	Sell	3,110	3,055	3,010	3,155	3,210	2,960
PTMP	Negative	Oversold	Negative	Spec. Buy	151	148	143	156	159	141
SIDO	Negative	Overbought	Positive	Sell	670	665	655	680	685	645
SMGR	Positive	Oversold	Negative	Spec. Buy	5,450	5,350	5,225	5,575	5,675	5,150
SRTG	Negative	Overbought	Positive	Sell	1,560	1,545	1,520	1,585	1,600	1,495
TLKM	Positive	Strong Buy	Negative	Buy	3,215	3,190	3,175	3,230	3,255	3,125
TOWR	Positive	Oversold	Negative	Spec. Buy	805	795	780	820	830	770
UNTR	Negative	Overbought	Positive	Sell	25,950	25,575	25,225	26,300	26,675	24,825
UNVR	Positive	Oversold	Negative	Spec. Buy	2,460	2,365	2,280	2,545	2,640	2,245

OUR TEAM

Sukarno Alatas

Head of Equity Research

sukarno@kiwoom.co.id | 021 5010 5800**Abdul Azis Setyo Wibowo**

Equity Research Analyst

azis@kiwoom.co.id | 021 5010 5800**Miftahul Khaer**

Equity Research Analyst

khaer.miftahul@kiwoom.co.id | 021 5010 5800**Vicky Rosalinda**

Equity Research Analyst

vicky.rosalinda@kiwoom.co.id | 021 5010 5800**Wahyu Saputra**

Research Associate

wahyu.saputra@kiwoom.co.id | 021 5010 5800**OTHER DISCLOSURES**

All Kiwoom's research reports made available to clients are simultaneously available on our own website <http://www.kiwoom.co.id/>. Not all research content is redistributed, e-mailed or made available to third-party aggregators. For all research reports available on a particular stock, please contact your sales representative. Any data discrepancies in this report could be the result of different calculations and/or adjustments.

DISCLAIMER This report has been prepared and issued by PT Kiwoom Sekuritas Indonesia. Information has been obtained from sources believed to be reliable but Kiwoom Securities do not warrant its completeness or accuracy. Forward-looking information or statements in this report contain information that is based on forecast of future results, estimates of amounts not yet determinable, assumptions, and therefore involve known and unknown risks and uncertainties which may cause the actual results, performance or achievements of their subject matter to be materially different from current expectations.

To the fullest extent allowed by law, PT Kiwoom Sekuritas Indonesia shall not be liable for any direct, indirect or consequential losses, loss of profits, damages, costs or expenses incurred or suffered by any person or organization arising from reliance on or use of any information contained on this report. The information that we provide should not be construed in any manner whatsoever as, personalized advice.

No mention of a particular security in this report constitutes a recommendation to buy, sell or hold that or any security, or that any particular security, portfolio of securities, transaction or investment strategy is suitable for any specific person. This report is being supplied to you solely for your information and may not be reproduced by, further distributed to or published in whole or in part by, any other person.