

**JCI Range Today 7,099 – 7,123 (Support), 7,210 – 7,234 (Resistance)**



**Jakarta Composite Index**, Price closed positive with bullish candle. Indicator from stochastic is bearish, MACD histogram is moving negative (line is sloping) and volume is decreasing. Bearish scenario: If it moves bearish again, JCI is expected to weaken again to the support range of 7,099 – 7,123. Bullish scenario: If JCI is able to move bullish, JCI has the opportunity to break resistance 7,210 – 7,234.

**Stock Pick Today: AKRA, BBRI, TINS, TLKM**

## AKRA

Akr Corporindo Tbk, Indonesia, Jakarta:AKRA, D

EMA(10, close, 0)  
EMA(20, close, 0)



**(AKRA).** Price closed higher and breakout resistance. Price has the opportunity strengthen to the next resistance. Stochastic is golden cross, MACD histogram is moving positive (line is bullish) and volume is increasing significantly. Confirm buy if the next candle returns bullish or buy on support if it goes down first. Be careful if you fail to stay above the support level or become a support breakdown. **(Trading Buy)**

### TRADING STRATEGY:

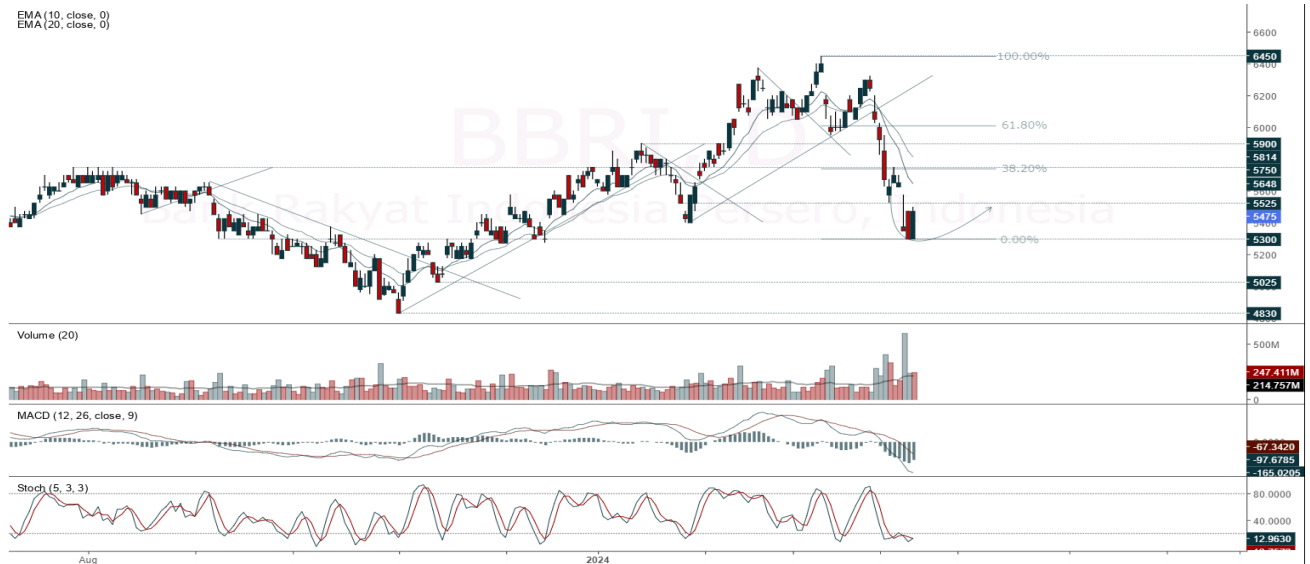
- 1. Target Price:** The price has a bullish opportunity to test the resistance level 1,895. If it breaks level 1,895 then the price will go to level 1,925. We recommend to be careful if the price fails to break through or turn around the support area.
- 2. Stop Loss:** To minimize the risk of loss, we recommend placing a stop loss at level 1,805.

Entry Buy : 1,825 – 1,850  
Target Price : 1,895 – 1,925  
Support : 1,810 – 1,825  
Cut loss : 1,805

**BBRI**

Bank Rakyat Indonesia Persero, Indonesia, Jakarta:BBRI, D

EMA (10, close, 0)  
EMA (20, close, 0)



**(BBRI).** Price closed higher with bullish candle. Price has the opportunity strengthen to the nearest resistance. Stochastic is golden cross, MACD histogram is moving negative (line is sloping) and volume is increasing. Confirm buy if the next candle returns bullish or buy on support if it goes down first. Be careful if you fail to stay above the support level or become a support breakdown. **(Trading Buy)**

**TRADING STRATEGY:**

1. **Target Price:** The price has a bullish opportunity to test the resistance level 5,625. If it breaks level 5,625 then the price will go to level 5,725. We recommend to be careful if the price fails to break through or turn around the support area.
2. **Stop Loss:** To minimize the risk of loss, we recommend placing a stop loss at level 5,325.

Entry Buy : 5,375 – 5,475  
 Target Price : 5,625 – 5,725  
 Support : 5,350 – 5,375  
 Cut loss : 5,325

**TINS**

Timah Persero Tbk, Indonesia, Jakarta:TINS, D

EMA(10, close, 0)  
EMA(20, close, 0)



**(TINS).** Price closed positive with bullish candle. Price has the opportunity strengthen to the nearest resistance. Stochastic is golden cross, MACD histogram is moving positive (line is bullish) and volume is increasing. Confirm buy if the next candle returns bullish or buy on support if it goes down first. Be careful if you fail to stay above the support level or become a support breakdown. **(Trading Buy)**

**TRADING STRATEGY:**

1. **Target Price:** The price has a bullish opportunity to test the resistance level 1,025. If it breaks level 1,025 then the price will go to level 1,045. We recommend to be careful if the price fails to break through or turn around the support area.
2. **Stop Loss:** To minimize the risk of loss, we recommend placing a stop loss at level 970.

Entry Buy : 980 – 1,000  
Target Price : 1,025 – 1,045  
Support : 975 – 980  
Cut loss : 970

**TLKM**

Telkom Indonesia (Persero) Tbk PT, Indonesia, Jakarta:TLKM, D

EMA (10, close, 0)  
EMA (20, close, 0)



**(TLKM).** Price closed higher with bullish candle. Price has the opportunity strengthen to the nearest resistance. Stochastic is golden cross, MACD histogram is moving negative (line is sloping) and volume is increasing. Confirm buy if the next candle returns bullish or buy on support if it goes down first. Be careful if you fail to stay above the support level or become a support breakdown. **(Trading Buy)**

**TRADING STRATEGY:**

1. **Target Price:** The price has a bullish opportunity to test the resistance level 3,310. If it breaks level 3,310 then the price will go to level 3,350. We recommend to be careful if the price fails to break through or turn around the support area.

2. **Stop Loss:** To minimize the risk of loss, we recommend placing a stop loss at level 3,190.

Entry Buy : 3,210 – 3,250  
Target Price : 3,310 – 3,350  
Support : 3,200 – 3,210  
Cut loss : 3,190

**Forecast – Technical Analysis**

Ticker	MA5	RSI Rec	MACD Trend	Recomm.	Pivot Point	Support		Resistance		Stop Loss Level
						1	2	1	2	
JCI	Negative	Oversold	Negative	Spec. Buy	7,150	7,125	7,125	7,175	7,200	7,000
ACES	Positive	Trading	Negative	Hold	935	920	910	945	960	895
ADRO	Negative	Overbought	Positive	Sell	2,745	2,720	2,685	2,780	2,805	2,645
AKRA	Negative	Trading	Positive	Hold	1,815	1,770	1,720	1,865	1,910	1,695
AMRT	Positive	Trading	Negative	Hold	2,790	2,755	2,710	2,835	2,870	2,665
ANTM	Negative	Overbought	Positive	Sell	1,765	1,710	1,660	1,815	1,870	1,635
ARTO	Positive	Oversold	Negative	Spec. Buy	2,155	2,090	2,055	2,190	2,255	2,025
ASII	Positive	Trading	Negative	Hold	5,125	5,075	5,025	5,175	5,225	4,935
BBCA	Negative	Oversold	Negative	Spec. Buy	9,500	9,450	9,375	9,575	9,625	9,250
BBNI	Positive	Oversold	Negative	Spec. Buy	5,300	5,225	5,200	5,325	5,400	5,100
BBRI	Positive	Oversold	Negative	Spec. Buy	5,400	5,300	5,200	5,500	5,600	5,125
BBTN	Positive	Trading	Negative	Hold	1,400	1,385	1,360	1,425	1,440	1,340
BMRI	Positive	Oversold	Negative	Spec. Buy	6,800	6,725	6,625	6,900	6,975	6,525
BRIS	Positive	Trading	Negative	Hold	2,560	2,500	2,450	2,610	2,670	2,415
BRPT	Negative	Trading	Positive	Hold	980	955	930	1,005	1,030	915
BUKA	Positive	Oversold	Negative	Spec. Buy	126	122	118	130	134	116
CPIN	Positive	Trading	Negative	Hold	4,975	4,850	4,735	5,100	5,225	4,665
EMTK	Positive	Oversold	Negative	Spec. Buy	394	388	382	400	406	376
ESSA	Negative	Overbought	Positive	Sell	735	715	685	765	785	675
EXCL	Positive	Oversold	Negative	Spec. Buy	2,170	2,090	2,040	2,220	2,300	2,010
GGRM	Negative	Trading	Positive	Hold	19,600	19,500	19,400	19,700	19,800	19,100
GOTO	Positive	Oversold	Negative	Spec. Buy	63	61	60	64	66	59
HRUM	Negative	Overbought	Positive	Sell	1,470	1,350	1,225	1,595	1,715	1,205
ICBP	Positive	Oversold	Negative	Spec. Buy	10,050	9,950	9,675	10,325	10,425	9,525
INCO	Negative	Trading	Positive	Hold	4,310	4,225	4,150	4,385	4,470	4,085
INDF	Positive	Oversold	Negative	Spec. Buy	6,100	6,050	6,025	6,125	6,175	5,925
INKP	Positive	Trading	Negative	Hold	9,625	9,425	9,275	9,775	9,975	9,150
INTP	Positive	Oversold	Negative	Spec. Buy	8,375	8,225	8,100	8,500	8,650	7,975
ITMG	Positive	Oversold	Negative	Spec. Buy	26,000	25,725	25,575	26,150	26,425	25,200
KLBF	Positive	Trading	Positive	Spec. Buy	1,440	1,415	1,385	1,470	1,495	1,365
MAPI	Positive	Trading	Negative	Hold	1,795	1,760	1,735	1,820	1,855	1,710
MBMA	Negative	Trading	Positive	Hold	560	540	530	570	590	520
MDKA	Negative	Overbought	Positive	Sell	2,780	2,740	2,680	2,840	2,880	2,640
MEDC	Negative	Overbought	Positive	Sell	1,515	1,500	1,475	1,540	1,555	1,455
MTEL	Positive	Oversold	Positive	Buy	600	590	585	605	615	575
PGAS	Negative	Overbought	Positive	Sell	1,380	1,370	1,350	1,400	1,410	1,330
PGEO	Negative	Trading	Positive	Hold	1,225	1,215	1,200	1,240	1,250	1,185
PTBA	Negative	Overbought	Positive	Sell	3,100	3,065	3,000	3,165	3,200	2,955
PTMP	Negative	Oversold	Negative	Spec. Buy	147	143	135	155	159	132
SIDO	Negative	Overbought	Positive	Sell	665	660	650	675	680	640
SMGR	Positive	Oversold	Negative	Spec. Buy	5,350	5,300	5,225	5,425	5,475	5,150
SRTG	Negative	Trading	Positive	Hold	1,530	1,505	1,475	1,560	1,585	1,450
TLKM	Positive	Strong Buy	Negative	Buy	3,215	3,120	3,015	3,320	3,415	2,970
TOWR	Positive	Oversold	Negative	Spec. Buy	805	790	775	820	835	765
UNTR	Negative	Overbought	Positive	Sell	25,525	25,250	24,900	25,875	26,150	24,525
UNVR	Positive	Oversold	Negative	Spec. Buy	2,390	2,350	2,330	2,410	2,450	2,295

## OUR TEAM

**Sukarno Alatas**

Head of Equity Research

[sukarno@kiwoom.co.id](mailto:sukarno@kiwoom.co.id) | 021 5010 5800

**Abdul Azis Setyo Wibowo**

Equity Research Analyst

[azis@kiwoom.co.id](mailto:azis@kiwoom.co.id) | 021 5010 5800

**Miftahul Khaer**

Equity Research Analyst

[khaer.miftahul@kiwoom.co.id](mailto:khaer.miftahul@kiwoom.co.id) | 021 5010 5800

**Vicky Rosalinda**

Equity Research Analyst

[vicky.rosalinda@kiwoom.co.id](mailto:vicky.rosalinda@kiwoom.co.id) | 021 5010 5800

**Wahyu Saputra**

Research Associate

[wahyu.saputra@kiwoom.co.id](mailto:wahyu.saputra@kiwoom.co.id) | 021 5010 5800



### OTHER DISCLOSURES

All Kiwoom's research reports made available to clients are simultaneously available on our own website <http://www.kiwoom.co.id/>. Not all research content is redistributed, e-mailed or made available to third-party aggregators. For all research reports available on a particular stock, please contact your sales representative. Any data discrepancies in this report could be the result of different calculations and/or adjustments.

**DISCLAIMER** This report has been prepared and issued by PT Kiwoom Sekuritas Indonesia. Information has been obtained from sources believed to be reliable but Kiwoom Securities do not warrant its completeness or accuracy. Forward-looking information or statements in this report contain information that is based on forecast of future results, estimates of amounts not yet determinable, assumptions, and therefore involve known and unknown risks and uncertainties which may cause the actual results, performance or achievements of their subject matter to be materially different from current expectations.

To the fullest extent allowed by law, PT Kiwoom Sekuritas Indonesia shall not be liable for any direct, indirect or consequential losses, loss of profits, damages, costs or expenses incurred or suffered by any person or organization arising from reliance on or use of any information contained on this report. The information that we provide should not be construed in any manner whatsoever as, personalized advice.

No mention of a particular security in this report constitutes a recommendation to buy, sell or hold that or any security, or that any particular security, portfolio of securities, transaction or investment strategy is suitable for any specific person. This report is being supplied to you solely for your information and may not be reproduced by, further distributed to or published in whole or in part by, any other person.