

JCI Range Today 7,011 – 7,036 (Support), 7,140 – 7,167 (Resistance)



Jakarta Composite Index, Price closed negative and breakdown previous support at 7,099. Indicator from stochastic is still bearish, MACD histogram is moving negative (line is sloping) and volume is increasing. Bearish scenario: If it moves bearish again, JCI is expected to weaken again to the support range of 7,011 – 7,036. Bullish scenario: If JCI is able to move bullish, JCI has the opportunity to break resistance 7,140 – 7,167.

Stock Pick Today: ELSA, INCO, PTMP, SIDO

ELSA

Elnusa Tbk, Indonesia, Jakarta:ELSA, D

EMA (10, close, 0)

EMA (20, close, 0)



(ELSA). Price closed higher and testing dynamic resistance (FR 38.20%). Price is expected to test the nearest resistance and continue strengthening to the next resistance. Stochastic is bearish, MACD histogram is moving positive (line is bullish) and volume is increasing significantly. Confirm buy if the next candle returns bullish or buy on support if it goes down first. Be careful if you fail to stay above the support level or become a support breakdown. **(Trading Buy)**

TRADING STRATEGY:

1. **Target Price:** The price has a bullish opportunity to test the resistance level 420. If it breaks level 420 then the price will go to level 428. We recommend to be careful if the price fails to break through or turn around the support area.

2. **Stop Loss:** To minimize the risk of loss, we recommend placing a stop loss at level 394.

Entry Buy : 398 – 406
Target Price : 420 – 428
Support : 396 – 398
Cut loss : 394

INCO

Vale Indonesia Tbk, Indonesia, Jakarta:INCO, D

EMA (10, close, 0)
EMA (20, close, 0)



(INCO). Price closed higher and breakout resistance. Price has the opportunity strengthen to the next resistance. Stochastic is neutral, MACD histogram is moving positive (line is bullish) and volume is increasing. Confirm buy if the next candle returns bullish or buy on support if it goes down first. Be careful if you fail to stay above the support level or become a support breakdown. **(Trading Buy)**

TRADING STRATEGY:

1. **Target Price:** The price has a bullish opportunity to test the resistance level 4,510. If it breaks level 4,510 then the price will go to level 4,560. We recommend to be careful if the price fails to break through or turn around the support area.

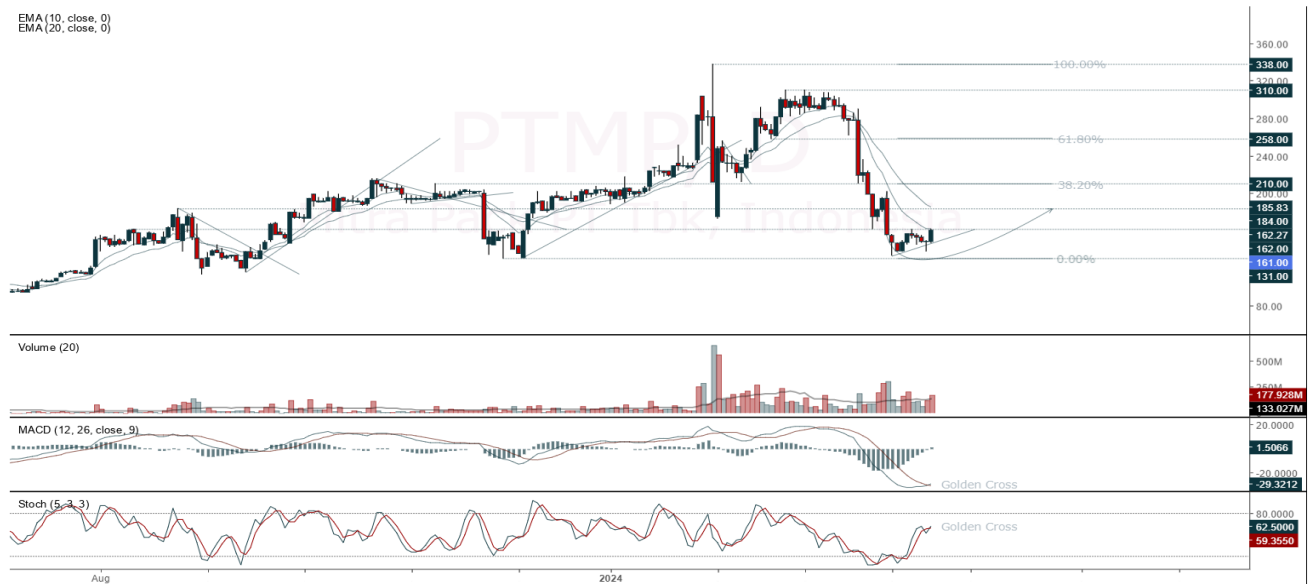
2. **Stop Loss:** To minimize the risk of loss, we recommend placing a stop loss at level 4,310.

- Entry Buy : 4,350 – 4,400
- Target Price : 4,510 – 4,560
- Support : 4,320 – 4,350
- Cut loss : 4,310

PTMP

Mitra Pack PT Tbk, Indonesia, Jakarta:PTMP, D

EMA (10, close, 0)
EMA (20, close, 0)



(PTMP). Price closed higher and testing dynamic resistance at EMA 10. Price is expected to test the nearest resistance and continue strengthening to the next resistance. Stochastic is golden cross, MACD histogram is moving positive (line is golden cross) and volume is increasing. Confirm buy if the next candle returns bullish or buy on support if it goes down first. Be careful if you fail to stay above the support level or become a support breakdown. **(Trading Buy)**

TRADING STRATEGY:

1. **Target Price:** The price has a bullish opportunity to test the resistance level 166. If it breaks level 166 then the price will go to level 170. We recommend to be careful if the price fails to break through or turn around the support area.

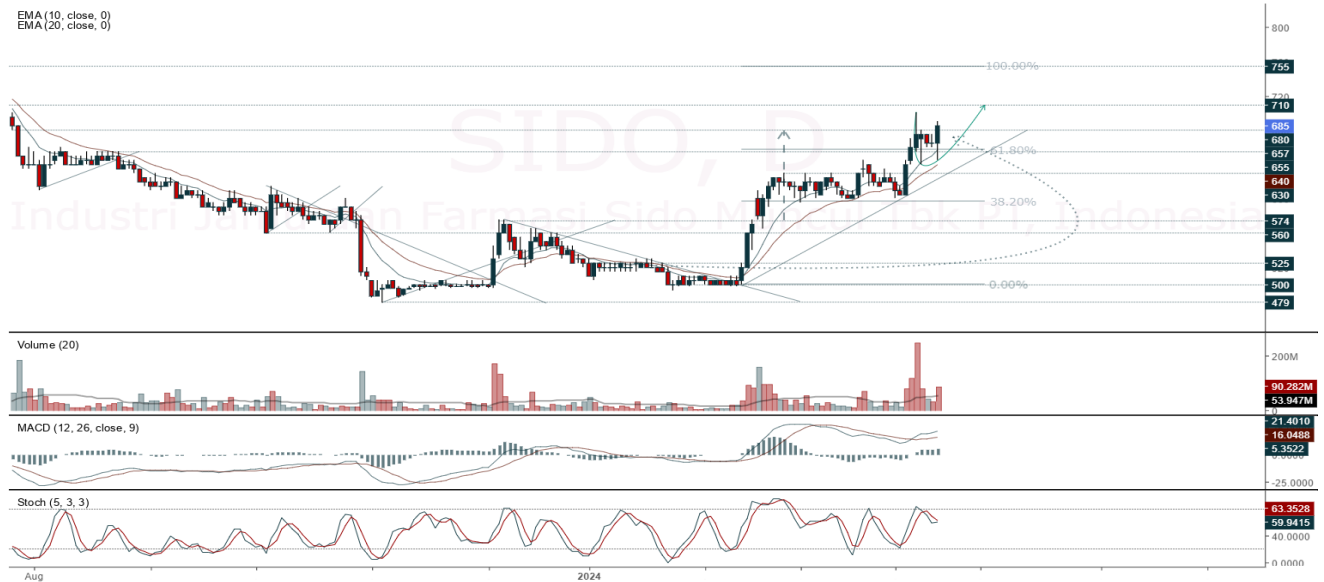
2. **Stop Loss:** To minimize the risk of loss, we recommend placing a stop loss at level 155.

Entry Buy : 157 – 161
Target Price : 166 – 170
Support : 156 – 157
Cut loss : 155

SIDO

Industri Jamu dan Farmasi Sido Muncul Tbk PT, Indonesia:SIDO, D

EMA(10, close, 0)
EMA(20, close, 0)



(SIDO). Price closed higher and breakout resistance. Price has the opportunity strengthen to the next resistance. Stochastic is golden cross potential, MACD histogram is moving positive (line is bullish) and volume is increasing significantly. Confirm buy if the next candle returns bullish or buy on support if it goes down first. Be careful if you fail to stay above the support level or become a support breakdown. **(Trading Buy)**

TRADING STRATEGY:

1. **Target Price:** The price has a bullish opportunity to test the resistance level 705. If it breaks level 705 then the price will go to level 725. We recommend to be careful if the price fails to break through or turn around the support area.
2. **Stop Loss:** To minimize the risk of loss, we recommend placing a stop loss at level 660.

Entry Buy : 670 – 685
 Target Price : 705 – 725
 Support : 665 – 670
 Cut loss : 660

Forecast – Technical Analysis

Ticker	MA5	RSI Rec	MACD Trend	Recomm.	Pivot Point	Support		Resistance		Stop Loss Level
						1	2	1	2	
JCI	Positive	Oversold	Negative	Spec. Buy	7,100	7,050	7,000	7,150	7,200	6,900
ACES	Positive	Trading	Negative	Hold	930	915	900	945	960	885
ADRO	Negative	Overbought	Positive	Sell	2,750	2,710	2,670	2,790	2,830	2,630
AKRA	Negative	Overbought	Positive	Sell	1,850	1,835	1,820	1,865	1,880	1,790
AMRT	Positive	Trading	Negative	Hold	2,800	2,755	2,700	2,855	2,900	2,655
ANTM	Negative	Overbought	Positive	Sell	1,755	1,740	1,710	1,785	1,800	1,685
ARTO	Positive	Oversold	Negative	Spec. Buy	2,130	2,070	2,020	2,180	2,240	1,990
ASII	Positive	Oversold	Negative	Spec. Buy	4,975	4,875	4,770	5,075	5,175	4,695
BBCA	Positive	Oversold	Negative	Spec. Buy	9,400	9,325	9,200	9,525	9,600	9,075
BBNI	Positive	Oversold	Negative	Spec. Buy	5,225	5,200	5,125	5,300	5,325	5,050
BBRI	Positive	Oversold	Negative	Spec. Buy	5,325	5,250	5,200	5,375	5,450	5,100
BBTN	Positive	Trading	Negative	Hold	1,380	1,365	1,330	1,415	1,430	1,310
BMRI	Positive	Trading	Negative	Hold	6,725	6,650	6,575	6,800	6,875	6,475
BRIS	Positive	Trading	Negative	Hold	2,535	2,500	2,435	2,600	2,635	2,400
BRPT	Negative	Trading	Positive	Hold	955	940	925	970	985	910
BUKA	Positive	Oversold	Negative	Spec. Buy	120	115	110	125	130	108
CPIN	Positive	Trading	Negative	Hold	4,910	4,795	4,705	5,000	5,125	4,635
EMTK	Positive	Oversold	Negative	Spec. Buy	378	368	356	390	400	351
ESSA	Negative	Overbought	Positive	Sell	745	740	720	765	770	710
EXCL	Positive	Trading	Negative	Hold	2,165	2,110	2,025	2,250	2,305	1,995
GGRM	Positive	Trading	Negative	Hold	19,600	19,475	19,400	19,675	19,800	19,100
GOTO	Positive	Oversold	Negative	Spec. Buy	60	59	57	62	63	56
HRUM	Positive	Trading	Negative	Hold	1,335	1,270	1,210	1,395	1,460	1,190
ICBP	Positive	Oversold	Negative	Spec. Buy	9,825	9,650	9,425	10,050	10,225	9,275
INCO	Negative	Overbought	Positive	Sell	4,335	4,255	4,105	4,485	4,565	4,040
INDF	Positive	Oversold	Negative	Spec. Buy	6,075	6,075	6,000	6,150	6,150	5,925
INKP	Positive	Overbought	Negative	Sell	9,650	9,525	9,375	9,800	9,925	9,225
INTP	Positive	Oversold	Negative	Spec. Buy	7,925	7,650	7,400	8,175	8,450	7,275
ITMG	Positive	Oversold	Negative	Spec. Buy	25,800	25,625	25,325	26,100	26,275	24,950
KLBF	Positive	Oversold	Negative	Spec. Buy	1,405	1,390	1,360	1,435	1,450	1,340
MAPI	Positive	Oversold	Negative	Spec. Buy	1,725	1,675	1,605	1,795	1,845	1,580
MBMA	Negative	Trading	Positive	Hold	565	550	520	595	610	510
MDKA	Negative	Overbought	Positive	Sell	2,810	2,760	2,720	2,850	2,900	2,680
MEDC	Positive	Overbought	Positive	Hold	1,565	1,510	1,475	1,600	1,655	1,455
MTEL	Positive	Oversold	Negative	Spec. Buy	585	580	560	605	610	555
PGAS	Positive	Overbought	Negative	Sell	1,360	1,350	1,330	1,380	1,390	1,310
PGEO	Negative	Trading	Positive	Hold	1,220	1,200	1,170	1,250	1,270	1,150
PTBA	Negative	Overbought	Positive	Sell	3,130	3,105	3,070	3,165	3,190	3,020
PTMP	Positive	Oversold	Negative	Spec. Buy	155	147	139	163	171	136
SIDO	Negative	Overbought	Positive	Sell	670	655	625	700	715	615
SMGR	Positive	Strong Buy	Negative	Buy	5,225	5,075	4,920	5,375	5,525	4,845
SRTG	Negative	Trading	Positive	Hold	1,525	1,490	1,455	1,560	1,595	1,430
TLKM	Positive	Oversold	Negative	Spec. Buy	3,185	3,140	3,085	3,240	3,285	3,040
TOWR	Positive	Oversold	Negative	Spec. Buy	795	785	770	810	820	755
UNTR	Negative	Trading	Positive	Hold	25,500	25,250	24,975	25,775	26,025	24,600
UNVR	Positive	Oversold	Negative	Spec. Buy	2,385	2,325	2,275	2,435	2,495	2,240

OUR TEAM

Sukarno Alatas

Head of Equity Research

sukarno@kiwoom.co.id | 021 5010 5800**Abdul Azis Setyo Wibowo**

Equity Research Analyst

azis@kiwoom.co.id | 021 5010 5800**Miftahul Khaer**

Equity Research Analyst

khaer.miftahul@kiwoom.co.id | 021 5010 5800**Vicky Rosalinda**

Equity Research Analyst

vicky.rosalinda@kiwoom.co.id | 021 5010 5800**Wahyu Saputra**

Research Associate

wahyu.saputra@kiwoom.co.id | 021 5010 5800**OTHER DISCLOSURES**

All Kiwoom's research reports made available to clients are simultaneously available on our own website <http://www.kiwoom.co.id/>. Not all research content is redistributed, e-mailed or made available to third-party aggregators. For all research reports available on a particular stock, please contact your sales representative. Any data discrepancies in this report could be the result of different calculations and/or adjustments.

DISCLAIMER This report has been prepared and issued by PT Kiwoom Sekuritas Indonesia. Information has been obtained from sources believed to be reliable but Kiwoom Securities do not warrant its completeness or accuracy. Forward-looking information or statements in this report contain information that is based on forecast of future results, estimates of amounts not yet determinable, assumptions, and therefore involve known and unknown risks and uncertainties which may cause the actual results, performance or achievements of their subject matter to be materially different from current expectations.

To the fullest extent allowed by law, PT Kiwoom Sekuritas Indonesia shall not be liable for any direct, indirect or consequential losses, loss of profits, damages, costs or expenses incurred or suffered by any person or organization arising from reliance on or use of any information contained on this report. The information that we provide should not be construed in any manner whatsoever as, personalized advice.

No mention of a particular security in this report constitutes a recommendation to buy, sell or hold that or any security, or that any particular security, portfolio of securities, transaction or investment strategy is suitable for any specific person. This report is being supplied to you solely for your information and may not be reproduced by, further distributed to or published in whole or in part by, any other person.