

JCI Range Today 6,985 – 7,026 (Support), 7,117 – 7,137 (Resistance)

Jakarta Stock Exchange Composite Index, Indonesia, Jakarta:JKSE, D

EMA (20, close, 0)
EMA (10, close, 0)
EMA (5, close, 0)



Jakarta Composite Index, Price closed negative and testing support. Indicator from stochastic is golden cross potential, MACD histogram is moving negative (line is sloping) and volume is neutral. Bearish scenario: If it moves bearish again, JCI is expected to weaken again to the support range of 6,985 – 7,026. Bullish scenario: If JCI is able to move bullish, JCI has the opportunity to break resistance 7,117 – 7,137.

Stock Pick Today: AMRT, CMRY, INKP, PTPP

AMRT

Sumber Alfaria Trijaya Tbk, Indonesia, Jakarta:AMRT, D

EMA (13, close, 0)
EMA (34, close, 0)



(AMRT). Price closed higher and breakup dynamic resistance at EMA 10 & 20. Price has the opportunity strengthen to the nearest resistance. Stochastic is golden cross potential, MACD histogram is moving positive (line is bullish) and volume is increasing. Confirm buy if the next candle returns bullish or buy on support if it goes down first. Be careful if you fail to stay above the support level or become a support breakdown. **(Trading Buy)**

TRADING STRATEGY:

1. **Target Price:** The price has a bullish opportunity to test the resistance level 2,940. If it breaks level 2,940 then the price will go to level 2,980. We recommend to be careful if the price fails to break through or turn around the support area.

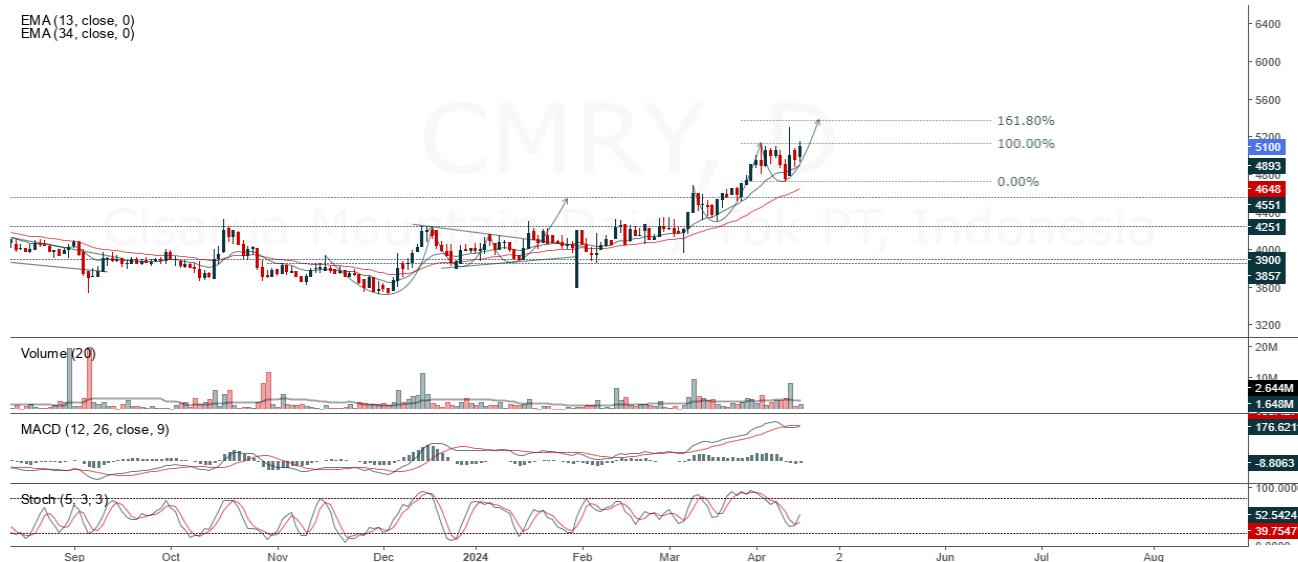
2. **Stop Loss:** To minimize the risk of loss, we recommend placing a stop loss at level 2,820.

Entry Buy : 2,840 – 2,880
Target Price : 2,940 – 2,980
Support : 2,830 – 2,840
Cut loss : 2,820

CMRY

Cisarua Mountain Dairy Tbk PT, Indonesia, Jakarta:CMRY, D

EMA (13, close, 0)
EMA (34, close, 0)



(CMRY). Price closed higher and testing dynamic resistance (FR 100%). Price is expected to test the nearest resistance and continue strengthening to the next resistance. Stochastic is bullish, MACD histogram is moving positive direction (line is flat) and volume is increasing. Confirm buy if the next candle returns bullish or buy on support if it goes down first. Be careful if you fail to stay above the support level or become a support breakdown. **(Trading Buy)**

TRADING STRATEGY:

1. **Target Price:** The price has a bullish opportunity to test the resistance level 5,250. If it breaks level 5,250 then the price will go to level 5,350. We recommend to be careful if the price fails to break through or turn around the support area.
2. **Stop Loss:** To minimize the risk of loss, we recommend placing a stop loss at level 4,970.

Entry Buy : 5,000 – 5,100
Target Price : 5,250 – 5,350
Support : 4,980 – 5,000
Cut loss : 4,970

INKP

Indah Kiat Pulp & Paper Tbk, Indonesia, Jakarta:INKP, D

EMA (13, close, 0)
EMA (34, close, 0)



(INKP). Price closed higher and breakup minor trendline resistance. Price is expected to test the nearest resistance and continue strengthening to the next resistance. Stochastic is bullish, MACD histogram is moving positive direction (line is sloping) and volume is neutral. Confirm buy if the next candle returns bullish or buy on support if it goes down first. Be careful if you fail to stay above the support level or become a support breakdown. **(Trading Buy)**

TRADING STRATEGY:

1. **Target Price:** The price has a bullish opportunity to test the resistance level 10,000. If it breaks level 10,000 then the price will go to level 10,100. We recommend to be careful if the price fails to break through or turn around the support area.

2. **Stop Loss:** To minimize the risk of loss, we recommend placing a stop loss at level 9,700.

- Entry Buy : 9,750 – 9,850
- Target Price : 10,000 – 10,100
- Support : 9,725 – 9,750
- Cut loss : 9,700

PTPP

Pembangunan Perumahan, Indonesia, Jakarta:PTPP, D



(PTPP). Price closed higher and testing dynamic resistance at EMA 10. Price is expected to test the nearest resistance and continue strengthening to the next resistance. Stochastic is still bullish, MACD histogram is moving positive direction (line is sloping) and volume is increasing. Confirm buy if the next candle returns bullish or buy on support if it goes down first. Be careful if you fail to stay above the support level or become a support breakdown. **(Trading Buy)**

TRADING STRATEGY:

1. **Target Price:** The price has a bullish opportunity to test the resistance level 454. If it breaks level 454 then the price will go to level 464. We recommend to be careful if the price fails to break through or turn around the support area.

2. **Stop Loss:** To minimize the risk of loss, we recommend placing a stop loss at level 426.

Entry Buy : 430 – 440

Target Price : 454 – 464

Support : 428 – 430

Cut loss : 426

Forecast – Technical Analysis

Ticker	MA5	RSI Rec	MACD Trend	Recomm.	Pivot Point	Support		Resistance		Stop Loss Level
						1	2	1	2	
JCI	Positive	Oversold	Negative	Spec. Buy	7,075	7,050	7,000	7,125	7,175	6,875
ACES	Positive	Trading	Negative	Hold	945	925	915	955	975	900
ADRO	Negative	Overbought	Positive	Sell	2,770	2,735	2,720	2,785	2,820	2,675
AKRA	Negative	Overbought	Positive	Sell	1,815	1,785	1,735	1,865	1,895	1,710
AMRT	Positive	Trading	Negative	Hold	2,850	2,810	2,760	2,900	2,940	2,720
ANTM	Negative	Overbought	Positive	Sell	1,780	1,755	1,740	1,795	1,820	1,710
ARTO	Positive	Oversold	Negative	Spec. Buy	2,160	2,115	2,070	2,205	2,250	2,035
ASII	Positive	Oversold	Negative	Spec. Buy	4,955	4,920	4,905	4,970	5,000	4,830
BBCA	Positive	Oversold	Negative	Spec. Buy	9,375	9,350	9,300	9,425	9,450	9,175
BBNI	Positive	Oversold	Negative	Spec. Buy	5,275	5,200	5,075	5,400	5,475	5,000
BBRI	Positive	Oversold	Negative	Spec. Buy	5,250	5,175	5,075	5,350	5,425	4,995
BBTN	Positive	Trading	Negative	Hold	1,365	1,340	1,305	1,400	1,425	1,285
BMRI	Positive	Trading	Negative	Hold	6,775	6,650	6,475	6,950	7,075	6,375
BRIS	Positive	Trading	Negative	Hold	2,530	2,500	2,450	2,580	2,610	2,415
BRPT	Positive	Trading	Positive	Spec. Buy	955	940	930	965	980	915
BUKA	Positive	Oversold	Negative	Spec. Buy	117	114	112	119	122	110
CPIN	Positive	Trading	Negative	Hold	4,990	4,960	4,915	5,025	5,075	4,845
EMTK	Positive	Oversold	Negative	Spec. Buy	371	363	355	379	387	349
ESSA	Negative	Overbought	Positive	Sell	750	740	730	760	770	720
EXCL	Positive	Trading	Negative	Hold	2,270	2,210	2,160	2,320	2,380	2,130
GGRM	Positive	Trading	Negative	Hold	19,625	19,550	19,450	19,725	19,800	19,175
GOTO	Positive	Oversold	Negative	Spec. Buy	60	57	56	61	64	55
HRUM	Positive	Trading	Negative	Hold	1,320	1,285	1,250	1,355	1,390	1,230
ICBP	Positive	Oversold	Negative	Spec. Buy	9,825	9,675	9,500	10,000	10,150	9,350
INCO	Negative	Overbought	Positive	Sell	4,450	4,365	4,320	4,495	4,580	4,255
INDF	Positive	Oversold	Negative	Spec. Buy	6,100	6,075	5,975	6,200	6,225	5,900
INKP	Negative	Overbought	Negative	Strong Sell	9,775	9,625	9,525	9,875	10,025	9,375
INTP	Positive	Oversold	Negative	Spec. Buy	7,725	7,625	7,525	7,825	7,925	7,425
ITMG	Positive	Oversold	Negative	Spec. Buy	25,650	25,500	25,350	25,800	25,950	24,975
KLBF	Positive	Oversold	Negative	Spec. Buy	1,405	1,390	1,370	1,425	1,440	1,350
MAPI	Positive	Oversold	Negative	Spec. Buy	1,690	1,635	1,560	1,765	1,820	1,535
MBMA	Positive	Trading	Positive	Spec. Buy	580	570	555	595	605	550
MDKA	Negative	Overbought	Positive	Sell	2,760	2,680	2,600	2,840	2,920	2,560
MEDC	Positive	Overbought	Positive	Hold	1,510	1,470	1,415	1,565	1,605	1,395
MTEL	Positive	Oversold	Negative	Spec. Buy	585	580	570	595	600	560
PGAS	Positive	Overbought	Negative	Sell	1,355	1,330	1,320	1,365	1,390	1,300
PGEO	Negative	Trading	Positive	Hold	1,215	1,205	1,190	1,230	1,240	1,170
PTBA	Negative	Overbought	Positive	Sell	3,110	3,065	3,020	3,155	3,200	2,970
PTMP	Negative	Oversold	Negative	Spec. Buy	161	157	152	166	170	150
SIDO	Negative	Overbought	Positive	Sell	700	690	675	715	725	665
SMGR	Positive	Strong Buy	Negative	Buy	5,075	4,955	4,855	5,175	5,300	4,785
SRTG	Negative	Trading	Positive	Hold	1,525	1,505	1,480	1,550	1,570	1,460
TLKM	Positive	Oversold	Negative	Spec. Buy	3,165	3,125	3,095	3,195	3,235	3,045
TOWR	Positive	Oversold	Negative	Spec. Buy	790	770	755	805	825	740
UNTR	Negative	Trading	Positive	Hold	25,425	25,200	24,975	25,650	25,875	24,600
UNVR	Positive	Oversold	Negative	Spec. Buy	2,405	2,375	2,345	2,435	2,465	2,305

OUR TEAM

Sukarno Alatas

Head of Equity Research

sukarno@kiwoom.co.id | 021 5010 5800

Abdul Azis Setyo Wibowo

Equity Research Analyst

azis@kiwoom.co.id | 021 5010 5800

Miftahul Khaer

Equity Research Analyst

khaer.miftahul@kiwoom.co.id | 021 5010 5800

Vicky Rosalinda

Equity Research Analyst

vicky.rosalinda@kiwoom.co.id | 021 5010 5800

Wahyu Saputra

Research Associate

wahyu.saputra@kiwoom.co.id | 021 5010 5800



OTHER DISCLOSURES

All Kiwoom's research reports made available to clients are simultaneously available on our own website <http://www.kiwoom.co.id/>. Not all research content is redistributed, e-mailed or made available to third-party aggregators. For all research reports available on a particular stock, please contact your sales representative. Any data discrepancies in this report could be the result of different calculations and/or adjustments.

DISCLAIMER This report has been prepared and issued by PT Kiwoom Sekuritas Indonesia. Information has been obtained from sources believed to be reliable but Kiwoom Securities do not warrant its completeness or accuracy. Forward-looking information or statements in this report contain information that is based on forecast of future results, estimates of amounts not yet determinable, assumptions, and therefore involve known and unknown risks and uncertainties which may cause the actual results, performance or achievements of their subject matter to be materially different from current expectations.

To the fullest extent allowed by law, PT Kiwoom Sekuritas Indonesia shall not be liable for any direct, indirect or consequential losses, loss of profits, damages, costs or expenses incurred or suffered by any person or organization arising from reliance on or use of any information contained on this report. The information that we provide should not be construed in any manner whatsoever as, personalized advice.

No mention of a particular security in this report constitutes a recommendation to buy, sell or hold that or any security, or that any particular security, portfolio of securities, transaction or investment strategy is suitable for any specific person. This report is being supplied to you solely for your information and may not be reproduced by, further distributed to or published in whole or in part by, any other person.