

JCI Range Today 7,052 – 7,081 (Support), 7,192 – 7,234 (Resistance)

Jakarta Stock Exchange Composite Index, Indonesia, Jakarta:JKSE, D

EMA (20, close, 0)
EMA (10, close, 0)
EMA (5, close, 0)



Jakarta Composite Index, Price closed negative and breakdown support. Indicator from stochastic is back to bearish, MACD histogram is moving negative direction (line is sloping) and volume is decreasing. Bearish scenario: If it moves bearish again, JCI is expected to weaken again to the support range of 7,052 – 7,081. Bullish scenario: If JCI is able to move bullish, JCI has the opportunity to break resistance 7,192 – 7,234.

Stock Pick Today: AKRA, BULL, ERAA, JPFA

AKRA

Akr Corporindo Tbk, Indonesia, Jakarta:AKRA, D

 EMA(13, close, 0)
 EMA(34, close, 0)


(AKRA). Price closed higher and breakout resistance. Price has the opportunity strengthen to the next resistance. Stochastic is bullish, MACD histogram is moving positive (line is golden cross) and volume is increasing. Confirm buy if the next candle returns bullish or buy on support if it goes down first. Be careful if you fail to stay above the support level or become a support breakdown. **(Trading Buy)**

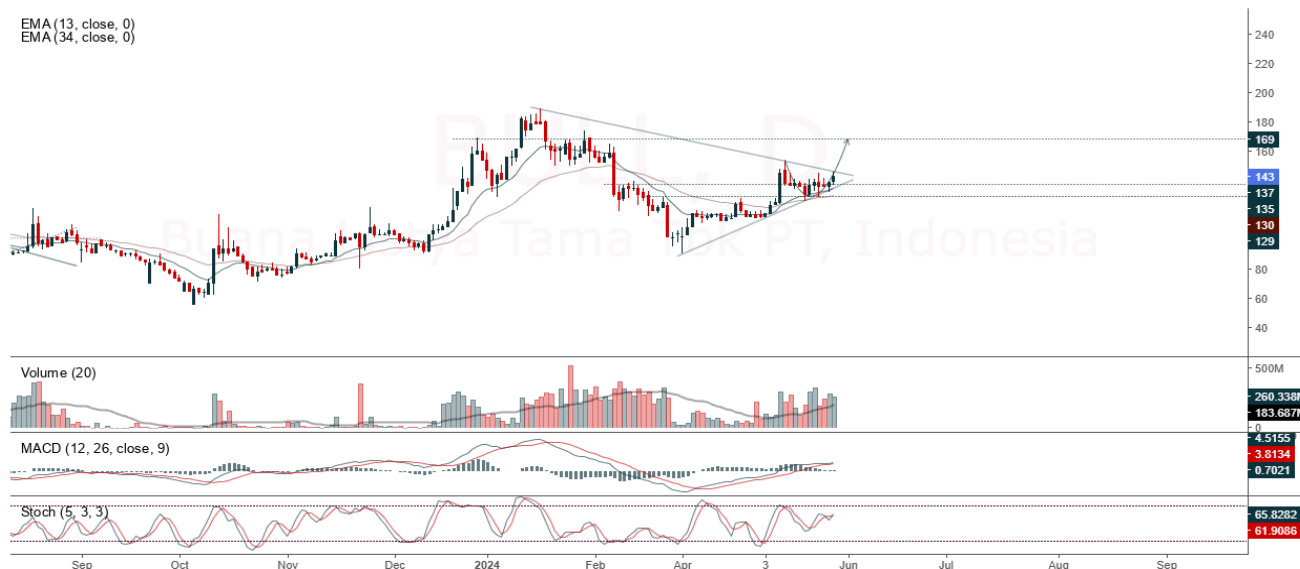
TRADING STRATEGY:

- 1. Target Price:** The price has a bullish opportunity to test the resistance level 1,700. If it breaks level 1,700 then the price will go to level 1,730. We recommend to be careful if the price fails to break through or turn around the support area.
- 2. Stop Loss:** To minimize the risk of loss, we recommend placing a stop loss at level 1,605.

Entry Buy : 1,625 – 1,650
 Target Price : 1,700 – 1,730
 Support : 1,610 – 1,625
 Cut loss : 1,605

BULL

Buana Listya Tama Tbk PT, Indonesia, Jakarta: BULL, D

 EMA (13, close, 0)
 EMA (34, close, 0)


(BULL). Price closed higher and testing trendline resistance. Price has the opportunity strengthen to the nearest resistance. Stochastic is golden cross, MACD histogram is moving positive (line is bullish) and volume is neutral. Confirm buy if the next candle returns bullish or buy on support if it goes down first. Be careful if you fail to stay above the support level or become a support breakdown. **(Trading Buy)**

TRADING STRATEGY:

1. **Target Price:** The price has a bullish opportunity to test the resistance level 146. If it breaks level 146 then the price will go to level 150. We recommend to be careful if the price fails to break through or turn around the support area.

2. **Stop Loss:** To minimize the risk of loss, we recommend placing a stop loss at level 139.

Entry Buy : 141 – 143
 Target Price : 146 – 150
 Support : 140 – 141
 Cut loss : 139

ERAA

Erajaya Swasembada Tbk, Indonesia, Jakarta:ERAA, D



(ERAA). Price closed higher and breakup trendline resistance. Price has the opportunity strengthen to the next resistance. Stochastic is golden cross, MACD histogram is moving positive (line is bullish) and volume is increasing. Confirm buy if the next candle returns bullish or buy on support if it goes down first. Be careful if you fail to stay above the support level or become a support breakdown. **(Trading Buy)**

TRADING STRATEGY:

1. **Target Price:** The price has a bullish opportunity to test the resistance level 414. If it breaks level 414 then the price will go to level 420. We recommend to be careful if the price fails to break through or turn around the support area.

2. **Stop Loss:** To minimize the risk of loss, we recommend placing a stop loss at level 394.

Entry Buy : 398 – 404

Target Price : 414 – 420

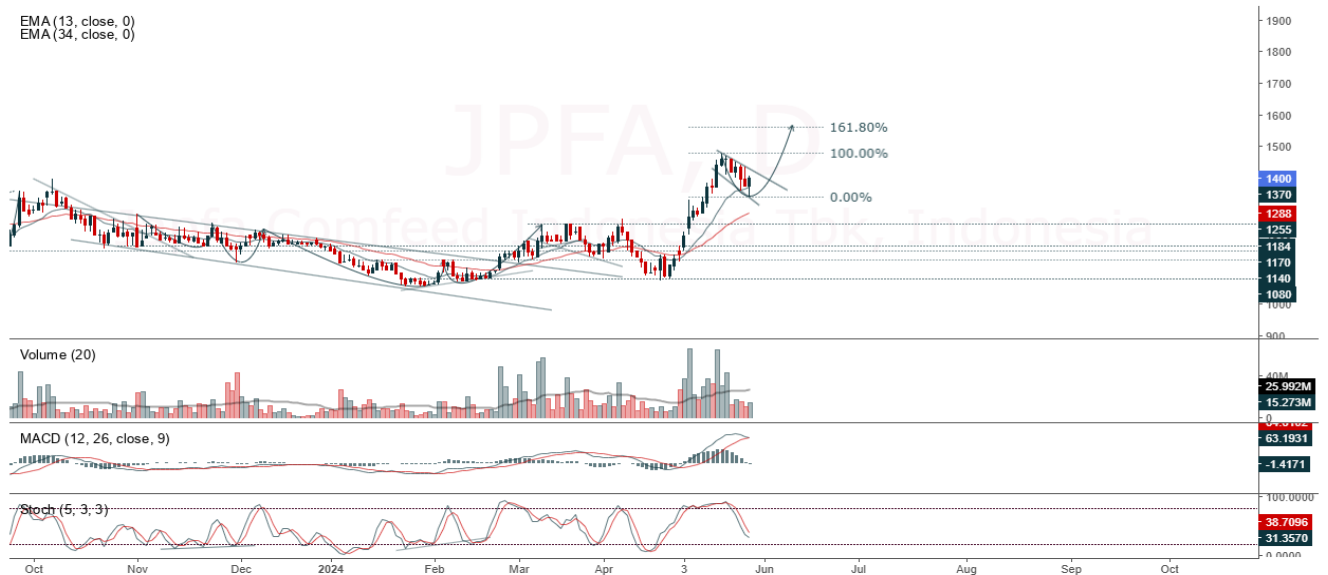
Support : 396 – 398

Cut loss : 394

JPFA

Japfa Comfeed Indonesia Tbk, Indonesia, Jakarta:JPFA, D

EMA (13, close, 0)
EMA (34, close, 0)



(JPFA). Price closed higher and breakup dynamic resistance at EMA 10. Price has the opportunity strengthen to the next resistance. Stochastic is golden cross potential, MACD histogram is moving bearish (line is sloping) and volume is increasing. Confirm buy if the next candle returns bullish or buy on support if it goes down first. Be careful if you fail to stay above the support level or become a support breakdown. **(Trading Buy)**

TRADING STRATEGY:

1. Target Price: The price has a bullish opportunity to test the resistance level 1,435. If it breaks level 1,435 then the price will go to level 1,460. We recommend to be careful if the price fails to break through or turn around the support area.
2. Stop Loss: To minimize the risk of loss, we recommend placing a stop loss at level 1,365.

Entry Buy : 1,375 – 1,400
Target Price : 1,435 – 1,460
Support : 1,370 – 1,375
Cut loss : 1,365

Forecast – Technical Analysis

Ticker	MA5	RSI Rec	MACD Trend	Recomm.	Pivot Point	Support 1	Support 2	Resistance 1	Resistance 2	Stop Loss Level
JCI	Positive	Trading	Positive	Spec. Buy	7,200	7,125	7,050	7,275	7,350	6,950
ACES	Positive	Oversold	Negative	Spec. Buy	820	805	790	835	850	775
ADRO	Positive	Trading	Negative	Hold	2,685	2,660	2,635	2,710	2,735	2,595
AKRA	Positive	Oversold	Negative	Spec. Buy	1,620	1,575	1,530	1,665	1,710	1,510
AMRT	Negative	Strong Sell	Positive	Sell	13,575	13,175	12,700	14,050	14,450	12,525
ANTM	Negative	Trading	Negative	Sell	2,810	2,775	2,740	2,845	2,880	2,695
ARTO	Positive	Trading	Negative	Hold	1,525	1,510	1,490	1,545	1,560	1,465
ASII	Positive	Trading	Positive	Spec. Buy	2,340	2,275	2,210	2,405	2,470	2,175
BBCA	Positive	Oversold	Negative	Spec. Buy	4,610	4,415	4,180	4,845	5,050	4,115
BBNI	Positive	Trading	Negative	Hold	9,225	9,125	9,050	9,300	9,400	8,925
BBRI	Positive	Oversold	Positive	Buy	4,600	4,510	4,410	4,700	4,790	4,345
BBTN	Positive	Oversold	Positive	Buy	4,450	4,395	4,350	4,495	4,550	4,280
BMRI	Positive	Trading	Positive	Spec. Buy	1,250	1,240	1,215	1,275	1,285	1,200
BRIS	Positive	Oversold	Negative	Spec. Buy	5,800	5,725	5,625	5,900	5,975	5,550
BRPT	Positive	Trading	Negative	Hold	2,240	2,175	2,100	2,315	2,380	2,065
BUKA	Positive	Trading	Positive	Spec. Buy	1,120	1,060	1,005	1,175	1,235	985
CPIN	Negative	Trading	Positive	Hold	132	128	123	137	141	121
EMTK	Positive	Trading	Positive	Spec. Buy	5,200	5,150	5,100	5,250	5,300	5,025
ESSA	Positive	Trading	Negative	Hold	810	805	795	820	825	780
EXCL	Positive	Trading	Negative	Hold	2,425	2,395	2,365	2,455	2,485	2,325
GGRM	Positive	Trading	Positive	Spec. Buy	19,200	19,100	18,975	19,325	19,425	18,700
GOTO	Negative	Overbought	Positive	Sell	72	71	69	74	75	68
HRUM	Positive	Trading	Negative	Hold	1,390	1,370	1,350	1,410	1,430	1,330
ICBP	Positive	Trading	Positive	Spec. Buy	10,500	10,400	10,275	10,625	10,725	10,125
INCO	Positive	Overbought	Positive	Hold	5,175	5,025	4,915	5,275	5,425	4,840
INDF	Positive	Trading	Positive	Spec. Buy	6,100	6,075	6,025	6,150	6,175	5,925
INKP	Positive	Trading	Negative	Hold	9,550	9,425	9,300	9,675	9,800	9,150
INTP	Positive	Oversold	Positive	Buy	6,625	6,575	6,525	6,675	6,725	6,425
ITMG	Positive	Trading	Negative	Hold	10,450	10,250	10,025	10,675	10,875	9,850
KLBF	Positive	Oversold	Positive	Buy	24,375	24,250	24,175	24,450	24,575	23,800
MAPI	Negative	Overbought	Positive	Sell	1,515	1,495	1,460	1,550	1,570	1,440
MBMA	Positive	Oversold	Negative	Spec. Buy	1,320	1,295	1,255	1,360	1,385	1,235
MDKA	Negative	Overbought	Positive	Sell	675	665	645	695	705	635
MEDC	Positive	Overbought	Positive	Hold	2,900	2,825	2,720	3,005	3,080	2,675
MTEL	Positive	Trading	Positive	Spec. Buy	1,435	1,405	1,370	1,470	1,500	1,350
PGAS	Negative	Trading	Positive	Hold	610	600	595	615	625	585
PGEO	Negative	Overbought	Positive	Sell	1,620	1,605	1,580	1,645	1,660	1,555
PTBA	Negative	Trading	Negative	Sell	1,275	1,255	1,230	1,300	1,320	1,210
PTMP	Positive	Oversold	Negative	Spec. Buy	2,495	2,460	2,425	2,530	2,565	2,390
SIDO	Positive	Trading	Negative	Hold	705	690	680	715	730	665
SMGR	Positive	Strong Buy	Negative	Buy	3,760	3,730	3,680	3,810	3,840	3,625
SRTG	Positive	Trading	Positive	Spec. Buy	1,500	1,475	1,445	1,530	1,555	1,425
TLKM	Positive	Oversold	Negative	Spec. Buy	2,835	2,805	2,785	2,855	2,885	2,740
TOWR	Positive	Oversold	Negative	Spec. Buy	715	700	685	730	745	670
UNTR	Positive	Oversold	Negative	Spec. Buy	22,450	22,400	22,200	22,650	22,700	21,875
UNVR	Negative	Overbought	Positive	Sell	3,135	2,990	2,825	3,300	3,445	2,785

OUR TEAM

Sukarno Alatas

Head of Equity Research

sukarno@kiwoom.co.id | 021 5010 5800**Abdul Azis Setyo Wibowo**

Equity Research Analyst

azis@kiwoom.co.id | 021 5010 5800**Miftahul Khaer**

Equity Research Analyst

khaer.miftahul@kiwoom.co.id | 021 5010 5800**Vicky Rosalinda**

Equity Research Analyst

vicky.rosalinda@kiwoom.co.id | 021 5010 5800**Wahyu Saputra**

Research Associate

wahyu.saputra@kiwoom.co.id | 021 5010 5800**OTHER DISCLOSURES**

All Kiwoom's research reports made available to clients are simultaneously available on our own website <http://www.kiwoom.co.id/>. Not all research content is redistributed, e-mailed or made available to third-party aggregators. For all research reports available on a particular stock, please contact your sales representative. Any data discrepancies in this report could be the result of different calculations and/or adjustments.

DISCLAIMER This report has been prepared and issued by PT Kiwoom Sekuritas Indonesia. Information has been obtained from sources believed to be reliable but Kiwoom Securities do not warrant its completeness or accuracy. Forward-looking information or statements in this report contain information that is based on forecast of future results, estimates of amounts not yet determinable, assumptions, and therefore involve known and unknown risks and uncertainties which may cause the actual results, performance or achievements of their subject matter to be materially different from current expectations.

To the fullest extent allowed by law, PT Kiwoom Sekuritas Indonesia shall not be liable for any direct, indirect or consequential losses, loss of profits, damages, costs or expenses incurred or suffered by any person or organization arising from reliance on or use of any information contained on this report. The information that we provide should not be construed in any manner whatsoever as, personalized advice.

No mention of a particular security in this report constitutes a recommendation to buy, sell or hold that or any security, or that any particular security, portfolio of securities, transaction or investment strategy is suitable for any specific person. This report is being supplied to you solely for your information and may not be reproduced by, further distributed to or published in whole or in part by, any other person.