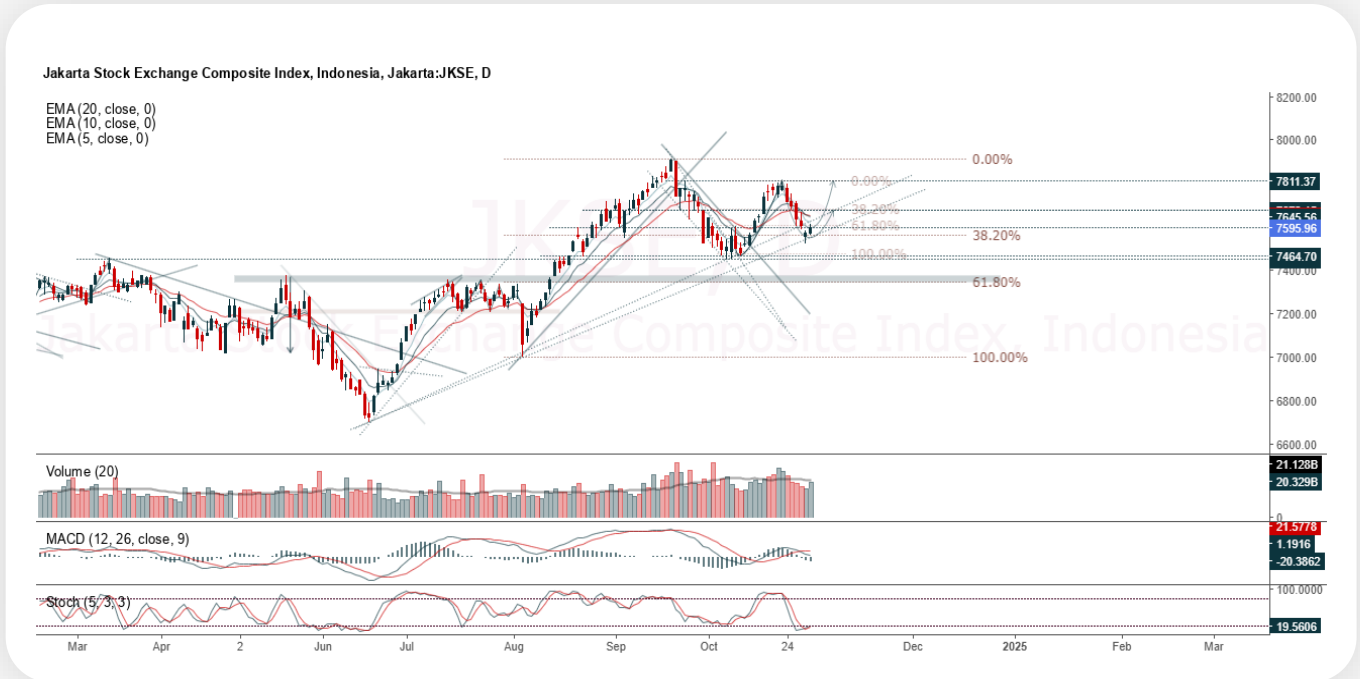




## JCI Range Today

**7,504 – 7,521 (Support), 7,617 – 7,634 (Resistance)**



**Jakarta Composite Index** closed positive with bullish candle. Indicator from stochastic is bullish, MACD histogram is moving bearish (line is sloping) and volume is increasing. Bearish scenario: If it moves bearish, JCI is expected to weaken to the support range 7,504 – 7,521. Bullish scenario: If JCI is able to move bullish, JCI has the opportunity strengthen to the resistance range 7,617 – 7,634.

## Stock Pick Today:



EMTK



HEAL



PGAS



TOWR



## EMTK

Elang Mahkota Teknologi Tbk.



**(EMTK).** Price closed higher and breakout resistance. Price has the opportunity strengthen to the next resistance. Stochastic is golden cross, MACD histogram is moving positive (line is bullish) and volume is increasing. Confirm buy if the next candle returns bullish or buy on support if it goes down first. Be careful if you fail to stay above the support level or become a support breakdown. **(Trading Buy)**

### **TRADING STRATEGY:**

#### **Target Price:**

The price has a bullish opportunity to test the resistance level 520. If it breaks level 520 then the price will go to level 530. We recommend to be careful if the price fails to break through or turn around the support area.

#### **Stop Loss:**

To minimize the risk of loss, we recommend placing a stop loss at level 494.

- Entry Buy : 500 – 510
- Target Price : 520 – 530
- Support : 496 – 500
- Cut loss : 494



## HEAL

Medikaloka Hermina Tbk.



**(HEAL).** Price closed higher and breakup trendline resistance. Price has the opportunity strengthen to the nearest resistance. Stochastic is still bullish, MACD histogram is moving positive direction (line is golden cross potential) and volume is increasing. Confirm buy if the next candle returns bullish or buy on support if it goes down first. Be careful if you fail to stay above the support level or become a support breakdown. **(Trading Buy)**

### **TRADING STRATEGY:**

#### **Target Price:**

The price has a bullish opportunity to test the resistance level 1,530. If it breaks level 1,530 then the price will go to level 1,555. We recommend to be careful if the price fails to break through or turn around the support area.

#### **Stop Loss:**

To minimize the risk of loss, we recommend placing a stop loss at level 1,460.

- Entry Buy : 1,475 – 1,500
- Target Price : 1,530 – 1,555
- Support : 1,465 – 1,475
- Cut loss : 1,460



## PGAS

Perusahaan Gas Negara Tbk.



**(PGAS).** Price closed higher and breakout resistance. Price has the opportunity strengthen to the next resistance. Stochastic is bullish, MACD histogram is moving positive direction (line is golden cross potential) and volume is increasing. Confirm buy if the next candle returns bullish or buy on support if it goes down first. Be careful if you fail to stay above the support level or become a support breakdown. **(Trading Buy)**

### **TRADING STRATEGY:**

#### **Target Price:**

The price has a bullish opportunity to test the resistance level 1,595. If it breaks level 1,595 then the price will go to level 1,620. We recommend to be careful if the price fails to break through or turn around the support area.

#### **Stop Loss:**

To minimize the risk of loss, we recommend placing a stop loss at level 1,520.

- Entry Buy : 1,535 – 1,565
- Target Price : 1,595 – 1,620
- Support : 1,525 – 1,535
- Cut loss : 1,520



## TOWR

Sarana Menara Nusantara Tbk.



**(TOWR).** Price closed higher and breakout resistance. Price has the opportunity strengthen to the next resistance. Stochastic is bullish, MACD histogram is moving positive direction (line is golden cross potential) and volume is decreasing. Confirm buy if the next candle returns bullish or buy on support if it goes down first. Be careful if you fail to stay above the support level or become a support breakdown. **(Trading Buy)**

### **TRADING STRATEGY:**

#### **Target Price:**

The price has a bullish opportunity to test the resistance level 815. If it breaks level 815 then the price will go to level 830. We recommend to be careful if the price fails to break through or turn around the support area.

#### **Stop Loss:**

To minimize the risk of loss, we recommend placing a stop loss at level 775.

Entry Buy : 785 – 800  
Target Price : 815 – 830  
Support : 780 – 785  
Cut loss : 775



## Forecast – Technical Analysis

Ticker	MA5	RSI Rec	MACD Trend	Recomm.	Pivot Point	Support 1	Support 2	Resistance 1	Resistance 2	Stop Loss Level
JCI	Positive	Trading	Negative	Hold	7,575	7,550	7,525	7,600	7,650	7,400
ACES	Positive	Trading	Negative	Hold	900	885	875	910	925	860
ADRO	Positive	Trading	Negative	Hold	3,640	3,600	3,580	3,660	3,700	3,525
AKRA	Positive	Oversold	Negative	Spec. Buy	1,375	1,350	1,325	1,400	1,425	1,305
AMMN	Negative	Trading	Positive	Hold	9,200	9,125	8,975	9,350	9,425	8,850
AMRT	Positive	Overbought	Positive	Hold	3,385	3,285	3,185	3,485	3,585	3,135
ANTM	Positive	Overbought	Negative	Sell	1,590	1,570	1,525	1,635	1,655	1,500
ARTO	Positive	Trading	Negative	Hold	2,845	2,800	2,745	2,900	2,945	2,705
ASII	Positive	Trading	Positive	Spec. Buy	5,200	5,100	5,000	5,300	5,400	4,925
BBCA	Positive	Trading	Negative	Hold	10,325	10,175	10,100	10,400	10,550	9,950
BBNI	Positive	Oversold	Negative	Spec. Buy	5,225	5,175	5,100	5,300	5,350	5,025
BBRI	Positive	Oversold	Negative	Spec. Buy	4,775	4,675	4,615	4,835	4,935	4,545
BBTN	Positive	Trading	Negative	Hold	1,415	1,380	1,360	1,435	1,470	1,340
BMRI	Positive	Oversold	Negative	Spec. Buy	6,750	6,675	6,625	6,800	6,875	6,525
BRIS	Positive	Trading	Negative	Hold	3,005	2,945	2,905	3,045	3,105	2,860
BRPT	Positive	Trading	Positive	Spec. Buy	1,000	985	975	1,010	1,025	960
BUKA	Positive	Trading	Negative	Hold	129	128	126	131	132	124
CPIN	Negative	Trading	Positive	Hold	5,150	5,050	4,895	5,325	5,425	4,820
ESSA	Positive	Trading	Negative	Hold	975	965	955	985	995	940
EXCL	Negative	Trading	Negative	Sell	2,260	2,240	2,230	2,270	2,290	2,195
GGRM	Positive	Strong Buy	Negative	Buy	14,100	14,000	13,925	14,175	14,275	13,725
GOTO	Positive	Overbought	Positive	Hold	69	68	65	72	73	64
HRUM	Positive	Oversold	Negative	Spec. Buy	1,210	1,190	1,180	1,220	1,240	1,160
ICBP	Negative	Trading	Negative	Sell	12,375	12,325	12,225	12,475	12,525	12,050
INCO	Positive	Oversold	Negative	Spec. Buy	3,815	3,740	3,675	3,880	3,955	3,620
INDF	Negative	Overbought	Positive	Sell	7,575	7,500	7,425	7,650	7,725	7,300
INKP	Negative	Trading	Negative	Sell	8,100	8,075	8,025	8,150	8,175	7,900
INTP	Positive	Trading	Negative	Hold	7,225	7,125	6,950	7,400	7,500	6,850
ISAT	Positive	Oversold	Negative	Spec. Buy	2,420	2,340	2,260	2,500	2,580	2,225
ITMG	Positive	Oversold	Negative	Spec. Buy	25,200	24,925	24,800	25,325	25,600	24,425
JSMR	Positive	Trading	Positive	Spec. Buy	4,840	4,820	4,790	4,870	4,890	4,720
KLBF	Positive	Oversold	Negative	Spec. Buy	1,610	1,590	1,570	1,630	1,650	1,545
MAPI	Positive	Trading	Negative	Hold	1,630	1,555	1,500	1,685	1,760	1,480
MBMA	Negative	Oversold	Negative	Spec. Buy	535	525	505	555	565	499
MDKA	Positive	Oversold	Negative	Spec. Buy	2,400	2,375	2,340	2,435	2,460	2,300
MEDC	Positive	Trading	Negative	Hold	1,280	1,265	1,240	1,305	1,320	1,220
MTEL	Negative	Trading	Positive	Hold	640	630	625	645	655	615
PGAS	Positive	Trading	Negative	Hold	1,535	1,510	1,475	1,570	1,595	1,455
PGEO	Positive	Oversold	Negative	Spec. Buy	1,095	1,085	1,080	1,100	1,110	1,060
PTBA	Positive	Oversold	Negative	Spec. Buy	2,905	2,845	2,785	2,965	3,025	2,740
SIDO	Positive	Oversold	Negative	Spec. Buy	610	605	600	615	620	590
SMGR	Positive	Oversold	Negative	Spec. Buy	3,935	3,840	3,755	4,020	4,115	3,700
TLKM	Positive	Trading	Negative	Hold	2,845	2,815	2,795	2,865	2,895	2,750
TOWR	Positive	Oversold	Negative	Spec. Buy	795	785	775	805	815	765
UNTR	Positive	Trading	Negative	Hold	27,200	26,900	26,475	27,625	27,925	26,075
UNVR	Positive	Oversold	Negative	Spec. Buy	1,970	1,950	1,945	1,975	1,995	1,915



## Kiwoom Research Team



### Sukarno Alatas

Head of Equity Research

[sukarno@kiwoom.co.id](mailto:sukarno@kiwoom.co.id) | 021 5010 5800



### Abdul Azis Setyo W.

Equity Research Analyst

[azis@kiwoom.co.id](mailto:azis@kiwoom.co.id) | 021 5010 5800



### Miftahul Khaer

Equity Research Analyst

[khaer.miftahul@kiwoom.co.id](mailto:khaer.miftahul@kiwoom.co.id) | 021 5010 5800



### HEAD OFFICE

Treasury Tower 27th Floor Unit A, District 8 Kawasan SCBD Lot 28,  
Jl.Jend.Sudirman Kav 52-53, Jakarta Selatan 12190

Tel : (021) 5010 5800

Fax : (021) 5010 5820

Email : [cs@kiwoom.co.id](mailto:cs@kiwoom.co.id)

Terdaftar dan  
diawasi oleh :  OJK  
OTORITAS  
JASRA  
KEUANGAN

### OTHER DISCLOSURES

All Kiwoom's research reports made available to clients are simultaneously available on our own website <http://www.kiwoom.co.id/>. Not all research content is redistributed, e-mailed or made available to third-party aggregators. For all research reports available on a particular stock, please contact your sales representative. Any data discrepancies in this report could be the result of different calculations and/or adjustments.

### DISCLAIMER

This report has been prepared and issued by PT Kiwoom Sekuritas Indonesia. Information has been obtained from sources believed to be reliable but Kiwoom Securities do not warrant its completeness or accuracy. Forward-looking information or statements in this report contain information that is based on forecast of future results, estimates of amounts not yet determinable, assumptions, and therefore involve known and unknown risks and uncertainties which may cause the actual results, performance or achievements of their subject matter to be materially different from current expectations. To the fullest extent allowed by law, PT Kiwoom Sekuritas Indonesia shall not be liable for any direct, indirect or consequential losses, loss of profits, damages, costs or expenses incurred or suffered by any person or organization arising from reliance on or use of any information contained on this report. The information that we provide should not be construed in any manner whatsoever as, personalized advice. No mention of a particular security in this report constitutes a recommendation to buy, sell or hold that or any security, or that any particular security, portfolio of securities, transaction or investment strategy is suitable for any specific person. This report is being supplied to you solely for your information and may not be reproduced by, further distributed to or published in whole or in part by, any other person.