



JCI Range Today

7,308 – 7,323 (Support), 7,420 – 7,435 (Resistance)



Jakarta Composite Index closed lower and breakdown support. Indicator from stochastic is death cross potential, MACD histogram is moving negative (line is bearish) and volume is increasing. Bearish scenario: If it moves bearish, JCI is expected to weaken to the support range 7,308 – 7,323. Bullish scenario: If JCI is able to move bullish, JCI has the opportunity strengthen to the resistance range 7,420 – 7,435.

Stock Pick Today:



AMMN



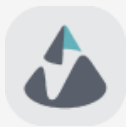
CPIN



FILM

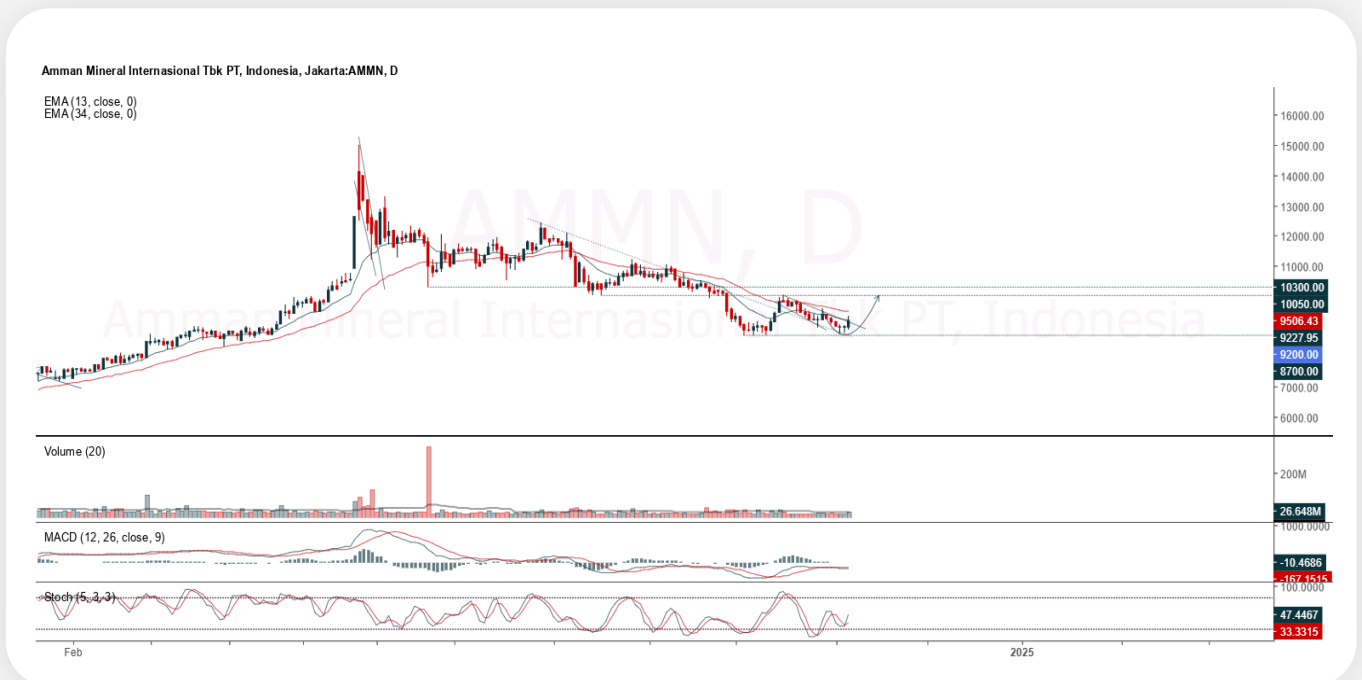


KPIG



AMMN

Amman Mineral Internasional Tbk.



(AMMN). Price closed higher and breakup trendline resistance. Price has the opportunity strengthen to the nearest resistance. Stochastic is golden cross, MACD histogram is moving positive direction (line is golden cross potential) and volume is increasing. Confirm buy if the next candle returns bullish or buy on support if it goes down first. Be careful if you fail to stay above the support level or become a support breakdown. **(Trading Buy)**

TRADING STRATEGY:

Target Price:

The price has a bullish opportunity to test the resistance level 9,400. If it breaks level 9,400 then the price will go to level 9,525. We recommend to be careful if the price fails to break through or turn around the support area.

Stop Loss:

To minimize the risk of loss, we recommend placing a stop loss at level 8,975.

Entry Buy	: 9,050 – 9,200
Target Price	: 9,400 – 9,525
Support	: 9,000 – 9,050
Cut loss	: 8,975



CPIN

Charoen Pokphand Indonesia Tbk.



(CPIN). Price closed higher and breakout resistance. Price has the opportunity strengthen to the next resistance. Stochastic is golden cross, MACD histogram is moving positive direction (line is flat) and volume is increasing. Confirm buy if the next candle returns bullish or buy on support if it goes down first. Be careful if you fail to stay above the support level or become a support breakdown. **(Trading Buy)**

TRADING STRATEGY:

Target Price:

The price has a bullish opportunity to test the resistance level 5,175. If it breaks level 5,175 then the price will go to level 5,275. We recommend to be careful if the price fails to break through or turn around the support area.

Stop Loss:

To minimize the risk of loss, we recommend placing a stop loss at level 4,940.

- Entry Buy : 4,980 – 5,075
- Target Price : 5,175 – 5,275
- Support : 4,950 – 4,980
- Cut loss : 4,940



FILM

MD Entertainment Tbk.



(FILM). Price closed higher and breakout resistance. Price has the opportunity strengthen to the next resistance. Stochastic is golden cross potential, MACD histogram is moving positive (line is bullish) and volume is increasing. Confirm buy if the next candle returns bullish or buy on support if it goes down first. Be careful if you fail to stay above the support level or become a support breakdown. **(Trading Buy)**

TRADING STRATEGY:

Target Price:

The price has a bullish opportunity to test the resistance level 3,620. If it breaks level 3,620 then the price will go to level 3,680. We recommend to be careful if the price fails to break through or turn around the support area.

Stop Loss:

To minimize the risk of loss, we recommend placing a stop loss at level 3,450.

Entry Buy : 3,490 – 3,550
 Target Price : 3,620 – 3,680
 Support : 3,460 – 3,490
 Cut loss : 3,450



KPIG

MNC Land Tbk.



(KPIG). Price closed higher and breakout resistance. Price has the opportunity strengthen to the next resistance. Stochastic is golden cross, MACD histogram is moving positive (line is golden cross) and volume is increasing significantly. Confirm buy if the next candle returns bullish or buy on support if it goes down first. Be careful if you fail to stay above the support level or become a support breakdown. **(Trading Buy)**

TRADING STRATEGY:

Target Price:

The price has a bullish opportunity to test the resistance level 187. If it breaks level 187 then the price will go to level 190. We recommend to be careful if the price fails to break through or turn around the support area.

Stop Loss:

To minimize the risk of loss, we recommend placing a stop loss at level 178.

Entry Buy : 180 – 183
Target Price : 187 – 190
Support : 179 – 180
Cut loss : 178



Forecast – Technical Analysis

Ticker	MA5	RSI Rec	MACD Trend	Recomm.	Pivot Point	Support 1	Support 2	Resistance 1	Resistance 2	Stop Loss Level
JCI	Positive	Oversold	Negative	Spec. Buy	7,425	7,375	7,300	7,500	7,575	7,175
ACES	Negative	Trading	Negative	Sell	880	850	805	925	955	795
ADMR	Positive	Trading	Negative	Hold	1,380	1,350	1,320	1,410	1,440	1,300
ADRO	Negative	Overbought	Positive	Sell	4,040	3,970	3,910	4,100	4,170	3,850
AKRA	Positive	Oversold	Negative	Spec. Buy	1,350	1,335	1,305	1,380	1,395	1,285
AMMN	Positive	Oversold	Negative	Spec. Buy	9,125	8,875	8,675	9,325	9,575	8,525
AMRT	Positive	Trading	Negative	Hold	3,210	3,110	3,000	3,320	3,420	2,955
ANTM	Positive	Trading	Negative	Hold	1,560	1,530	1,500	1,590	1,620	1,475
ARTO	Positive	Oversold	Negative	Spec. Buy	2,655	2,555	2,465	2,745	2,845	2,425
ASII	Positive	Trading	Negative	Hold	5,100	5,050	4,955	5,200	5,250	4,880
BBCA	Negative	Trading	Negative	Sell	10,450	10,400	10,325	10,525	10,575	10,175
BBNI	Negative	Trading	Negative	Sell	5,275	5,125	4,945	5,450	5,600	4,870
BBRI	Positive	Oversold	Negative	Spec. Buy	4,660	4,590	4,530	4,720	4,790	4,460
BBTN	Positive	Oversold	Negative	Spec. Buy	1,355	1,315	1,270	1,400	1,440	1,250
BMRI	Positive	Trading	Negative	Hold	6,750	6,550	6,375	6,925	7,125	6,275
BRIS	Positive	Trading	Negative	Hold	2,935	2,875	2,805	3,005	3,065	2,760
BRPT	Positive	Oversold	Negative	Spec. Buy	955	925	905	975	1,005	890
BUKA	Positive	Oversold	Negative	Spec. Buy	119	117	116	120	122	114
CPIN	Positive	Trading	Negative	Hold	4,995	4,890	4,785	5,100	5,200	4,710
ESSA	Positive	Trading	Negative	Hold	935	925	915	945	955	900
EXCL	Positive	Trading	Negative	Hold	2,240	2,215	2,200	2,255	2,280	2,165
GOTO	Positive	Trading	Negative	Hold	65	63	60	68	70	59
ICBP	Positive	Trading	Negative	Hold	12,300	12,100	11,850	12,550	12,750	11,675
INCO	Positive	Oversold	Negative	Spec. Buy	3,785	3,715	3,645	3,855	3,925	3,590
INDF	Negative	Overbought	Positive	Sell	7,850	7,700	7,575	7,975	8,125	7,450
INKP	Positive	Oversold	Negative	Spec. Buy	7,300	7,200	7,100	7,400	7,500	7,000
INTP	Positive	Oversold	Negative	Spec. Buy	6,925	6,775	6,675	7,025	7,175	6,575
ISAT	Negative	Trading	Positive	Hold	2,315	2,225	2,115	2,425	2,515	2,080
ITMG	Negative	Trading	Negative	Sell	25,350	25,200	24,975	25,575	25,725	24,600
JSMR	Positive	Oversold	Negative	Spec. Buy	4,715	4,690	4,645	4,760	4,785	4,575
KLBF	Positive	Oversold	Negative	Spec. Buy	1,600	1,590	1,570	1,620	1,630	1,550
MAPI	Positive	Oversold	Negative	Spec. Buy	1,505	1,445	1,370	1,580	1,640	1,350
MBMA	Negative	Trading	Positive	Hold	530	515	510	535	550	500
MDKA	Positive	Oversold	Negative	Spec. Buy	2,300	2,240	2,210	2,330	2,390	2,175
MEDC	Positive	Trading	Negative	Hold	1,235	1,200	1,160	1,275	1,310	1,145
MTEL	Positive	Oversold	Negative	Spec. Buy	605	600	595	610	615	585
PGAS	Negative	Trading	Negative	Sell	1,515	1,505	1,490	1,530	1,540	1,470
PGEO	Positive	Oversold	Negative	Spec. Buy	1,065	1,055	1,040	1,080	1,090	1,025
PTBA	Negative	Trading	Negative	Sell	2,875	2,850	2,815	2,910	2,935	2,775
SIDO	Positive	Oversold	Negative	Spec. Buy	585	575	570	590	600	560
SMGR	Positive	Oversold	Negative	Spec. Buy	3,660	3,590	3,560	3,690	3,760	3,505
SMRA	Positive	Oversold	Negative	Spec. Buy	615	590	560	645	670	555
TLKM	Positive	Oversold	Negative	Spec. Buy	2,765	2,730	2,705	2,790	2,825	2,665
TOWR	Positive	Oversold	Negative	Spec. Buy	775	770	755	790	795	745
UNTR	Negative	Trading	Positive	Hold	27,200	26,825	26,625	27,400	27,775	26,225
UNVR	Positive	Strong Buy	Negative	Buy	1,765	1,745	1,720	1,790	1,810	1,695



Kiwoom Research Team



Sukarno Alatas

Head of Equity Research

sukarno@kiwoom.co.id | 021 5010 5800



Abdul Azis Setyo W.

Equity Research Analyst

azis@kiwoom.co.id | 021 5010 5800



Miftahul Khaer

Equity Research Analyst

khaer.miftahul@kiwoom.co.id | 021 5010 5800



HEAD OFFICE

Treasury Tower 27th Floor Unit A, District 8 Kawasan SCBD Lot 28,
Jl.Jend.Sudirman Kav 52-53, Jakarta Selatan 12190

Tel : (021) 5010 5800

Fax : (021) 5010 5820

Email : cs@kiwoom.co.id

Terdaftar dan
diawasi oleh :  Otoritas
Jasa
Keuangan

OTHER DISCLOSURES

All Kiwoom's research reports made available to clients are simultaneously available on our own website <http://www.kiwoom.co.id/>. Not all research content is redistributed, e-mailed or made available to third-party aggregators. For all research reports available on a particular stock, please contact your sales representative. Any data discrepancies in this report could be the result of different calculations and/or adjustments.

DISCLAIMER

This report has been prepared and issued by PT Kiwoom Sekuritas Indonesia. Information has been obtained from sources believed to be reliable but Kiwoom Securities do not warrant its completeness or accuracy. Forward-looking information or statements in this report contain information that is based on forecast of future results, estimates of amounts not yet determinable, assumptions, and therefore involve known and unknown risks and uncertainties which may cause the actual results, performance or achievements of their subject matter to be materially different from current expectations. To the fullest extent allowed by law, PT Kiwoom Sekuritas Indonesia shall not be liable for any direct, indirect or consequential losses, loss of profits, damages, costs or expenses incurred or suffered by any person or organization arising from reliance on or use of any information contained on this report. The information that we provide should not be construed in any manner whatsoever as, personalized advice. No mention of a particular security in this report constitutes a recommendation to buy, sell or hold that or any security, or that any particular security, portfolio of securities, transaction or investment strategy is suitable for any specific person. This report is being supplied to you solely for your information and may not be reproduced by, further distributed to or published in whole or in part by, any other person.