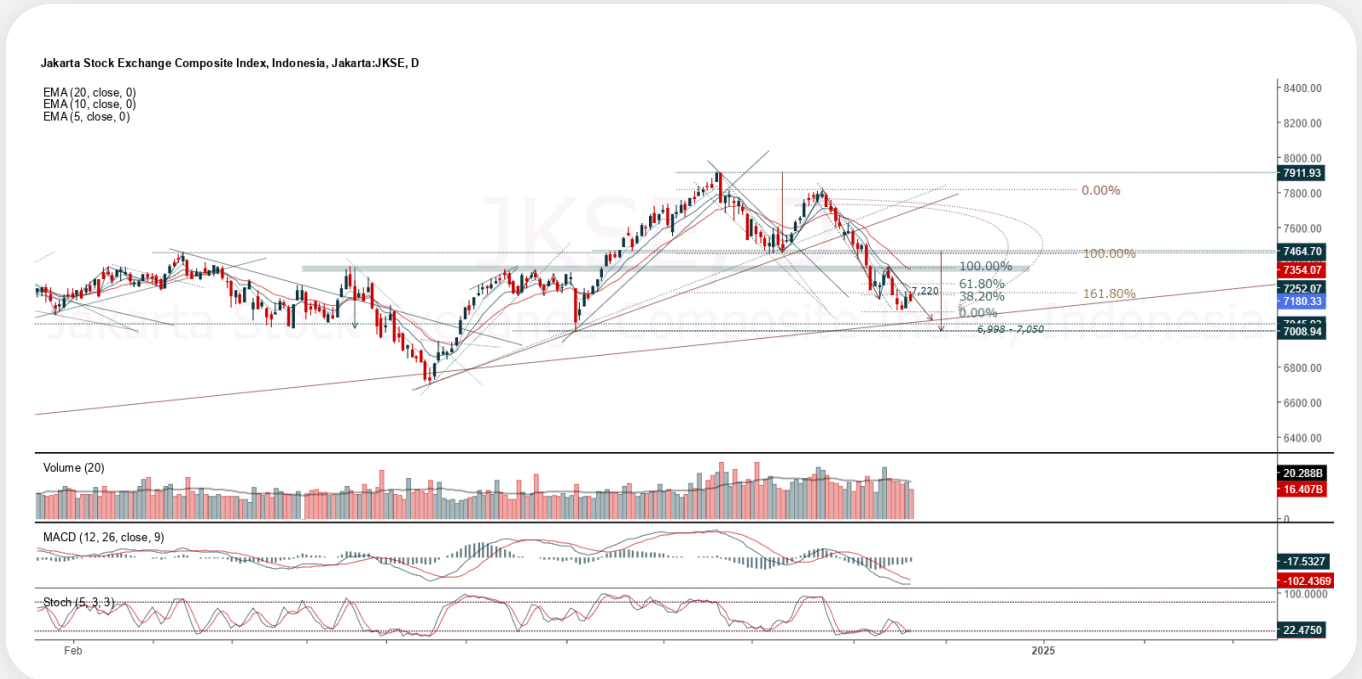




JCI Range Today 7,118 – 7,134 (Support), 7,214 – 7,229 (Resistance)



Jakarta Composite Index closed negative with bearish candle. Indicator from stochastic is golden cross, MACD histogram is moving positive direction (line is flat) and volume is decreasing. Bearish scenario: If it moves bearish, JCI is expected to weaken to the support range 7,118 – 7,134. Bullish scenario: If JCI is able to move bullish, JCI has the opportunity strengthen to the resistance range 7,214 – 7,229.

Stock Pick Today:



AMMN



KIJA



MEDC



PTRO



AMMN

Amman Mineral Internasional Tbk.



(AMMN). Price closed higher and breakout harmonic resistance (FR 100.00%). Price has the opportunity strengthen to the next resistance. Stochastic is bullish, MACD histogram is moving positive (line is bullish) and volume is increasing. Confirm buy if the next candle returns bullish or buy on support if it goes down first. Be careful if you fail to stay above the support level or become a support breakdown. **(Trading Buy)**

TRADING STRATEGY:

Target Price:

The price has a bullish opportunity to test the resistance level 9,850. If it breaks level 9,850 then the price will go to level 10,000. We recommend to be careful if the price fails to break through or turn around the support area.

Stop Loss:

To minimize the risk of loss, we recommend placing a stop loss at level 9,400.

Entry Buy	: 9,500 – 9,675
Target Price	: 9,850 – 10,000
Support	: 9,425 – 9,500
Cut loss	: 9,400



KIJA

Kawasan Industri Jababeka Tbk.



(KIJA). Price closed higher and back to rally. Price has the opportunity strengthen to the nearest resistance. Stochastic is still bullish, MACD histogram is moving positive direction (line is golden cross potential) and volume is increasing. Confirm buy if the next candle returns bullish or buy on support if it goes down first. Be careful if you fail to stay above the support level or become a support breakdown. **(Trading Buy)**

TRADING STRATEGY:

Target Price:

The price has a bullish opportunity to test the resistance level 196. If it breaks level 196 then the price will go to level 200. We recommend to be careful if the price fails to break through or turn around the support area.

Stop Loss:

To minimize the risk of loss, we recommend placing a stop loss at level 187.

Entry Buy	: 189 – 192
Target Price	: 196 – 200
Support	: 188 – 189
Cut loss	: 187



MEDC

Medco Energi Internasional Tbk.



(MEDC). Price closed higher and breakup dynamic resistance at EMA 5. Price has the opportunity strengthen to the nearest resistance. Stochastic is bullish, MACD histogram is moving positive direction (line is golden cross potential) and volume is decreasing. Confirm buy if the next candle returns bullish or buy on support if it goes down first. Be careful if you fail to stay above the support level or become a support breakdown. **(Trading Buy)**

TRADING STRATEGY:

Target Price:

The price has a bullish opportunity to test the resistance level 1,160. If it breaks level 1,160 then the price will go to level 1,180. We recommend to be careful if the price fails to break through or turn around the support area.

Stop Loss:

To minimize the risk of loss, we recommend placing a stop loss at level 1,110.

Entry Buy	: 1,120 – 1,140
Target Price	: 1,160 – 1,180
Support	: 1,115 – 1,120
Cut loss	: 1,110



PTRO

Petrosea Tbk.



(PTRO). Price closed higher and breakup dynamic resistance at EMA 5. Price has the opportunity strengthen to the nearest resistance. Stochastic is bullish, MACD histogram is moving positive direction (line is golden cross potential) and volume is decreasing. Confirm buy if the next candle returns bullish or buy on support if it goes down first. Be careful if you fail to stay above the support level or become a support breakdown. **(Trading Buy)**

TRADING STRATEGY:

Target Price:

The price has a bullish opportunity to test the resistance level 19,650. If it breaks level 19,650 then the price will go to level 20,000. We recommend to be careful if the price fails to break through or turn around the support area.

Stop Loss:

To minimize the risk of loss, we recommend placing a stop loss at level 18,725.

Entry Buy	: 18,850 – 19,250
Target Price	: 19,650 – 20,000
Support	: 18,750 – 18,850
Cut loss	: 18,725



Forecast – Technical Analysis

Ticker	MA5	RSI Rec	MACD Trend	Recomm.	Pivot Point	Support		Resistance		Stop Loss Level
						1	2	1	2	
JCI	Positive	Oversold	Negative	Spec. Buy	7,200	7,175	7,150	7,225	7,250	7,025
ACES	Positive	Oversold	Negative	Spec. Buy	820	815	800	835	840	790
ADMN	Positive	Oversold	Negative	Spec. Buy	1,310	1,270	1,250	1,330	1,370	1,230
ADRO	Positive	Trading	Negative	Hold	3,705	3,655	3,615	3,745	3,795	3,560
AKRA	Positive	Trading	Positive	Spec. Buy	1,325	1,310	1,295	1,340	1,355	1,275
AMMN	Positive	Trading	Positive	Spec. Buy	9,600	9,500	9,350	9,750	9,850	9,200
AMRT	Positive	Oversold	Negative	Spec. Buy	2,930	2,890	2,840	2,980	3,020	2,795
ANTM	Positive	Trading	Negative	Hold	1,485	1,455	1,435	1,505	1,535	1,410
ARTO	Positive	Trading	Negative	Hold	2,645	2,555	2,495	2,705	2,795	2,455
ASII	Positive	Trading	Negative	Hold	4,985	4,950	4,910	5,025	5,050	4,840
BBCA	Positive	Oversold	Negative	Spec. Buy	10,075	9,975	9,925	10,125	10,225	9,775
BBNI	Positive	Oversold	Negative	Spec. Buy	4,855	4,810	4,755	4,910	4,955	4,685
BBRI	Positive	Oversold	Negative	Spec. Buy	4,375	4,310	4,265	4,420	4,485	4,200
BBTN	Positive	Oversold	Negative	Spec. Buy	1,280	1,265	1,250	1,295	1,310	1,230
BMRI	Positive	Oversold	Negative	Spec. Buy	6,275	6,200	6,125	6,350	6,425	6,025
BRIS	Positive	Oversold	Negative	Spec. Buy	2,785	2,750	2,715	2,820	2,855	2,675
BRPT	Positive	Oversold	Negative	Spec. Buy	850	835	830	855	870	815
BUKA	Negative	Trading	Negative	Sell	122	121	119	124	125	117
CPIN	Positive	Trading	Negative	Hold	4,755	4,710	4,665	4,800	4,845	4,595
ESSA	Negative	Trading	Negative	Sell	845	830	805	870	885	795
EXCL	Negative	Trading	Negative	Sell	2,180	2,150	2,130	2,200	2,230	2,100
GOTO	Negative	Overbought	Positive	Sell	73	72	70	75	76	69
ICBP	Positive	Trading	Negative	Hold	11,825	11,725	11,550	12,000	12,100	11,375
INCO	Negative	Oversold	Negative	Spec. Buy	3,715	3,690	3,655	3,750	3,775	3,600
INDF	Negative	Overbought	Negative	Strong Sell	7,775	7,775	7,700	7,850	7,850	7,600
INKP	Positive	Oversold	Negative	Spec. Buy	7,150	7,100	7,050	7,200	7,250	6,950
INTP	Negative	Trading	Negative	Sell	6,950	6,850	6,775	7,025	7,125	6,675
ISAT	Negative	Trading	Positive	Hold	2,405	2,360	2,295	2,470	2,515	2,260
ITMG	Negative	Overbought	Positive	Sell	26,700	26,625	26,525	26,800	26,875	26,125
JSMR	Positive	Oversold	Negative	Spec. Buy	4,560	4,535	4,510	4,585	4,610	4,440
KLBF	Positive	Oversold	Negative	Spec. Buy	1,450	1,425	1,400	1,475	1,500	1,380
MAPI	Negative	Trading	Negative	Sell	1,590	1,560	1,520	1,630	1,660	1,500
MBMA	Positive	Trading	Negative	Hold	505	495	490	510	520	483
MDKA	Positive	Oversold	Negative	Spec. Buy	2,120	2,080	2,030	2,170	2,210	2,000
MEDC	Positive	Oversold	Negative	Spec. Buy	1,125	1,100	1,080	1,145	1,170	1,065
MTEL	Negative	Trading	Negative	Sell	580	570	565	585	595	555
PGAS	Positive	Trading	Negative	Hold	1,500	1,485	1,475	1,510	1,525	1,450
PGEO	Positive	Oversold	Negative	Spec. Buy	1,045	1,035	1,025	1,055	1,065	1,010
PTBA	Positive	Trading	Negative	Hold	2,755	2,725	2,695	2,785	2,815	2,650
SIDO	Positive	Oversold	Positive	Buy	585	575	575	585	595	565
SMGR	Positive	Trading	Negative	Hold	3,675	3,585	3,535	3,725	3,815	3,480
SMRA	Positive	Oversold	Negative	Spec. Buy	575	560	550	585	600	540
TLKM	Negative	Trading	Negative	Sell	2,705	2,655	2,595	2,765	2,815	2,555
TOWR	Positive	Oversold	Negative	Spec. Buy	720	715	705	730	735	695
UNTR	Positive	Trading	Negative	Hold	26,400	26,250	26,075	26,575	26,725	25,675
UNVR	Negative	Oversold	Positive	Spec. Buy	1,810	1,790	1,780	1,820	1,840	1,755



Kiwoom Research Team



Sukarno Alatas

Head of Equity Research

sukarno@kiwoom.co.id | 021 5010 5800



Abdul Azis Setyo W.

Equity Research Analyst

azis@kiwoom.co.id | 021 5010 5800



Miftahul Khaer

Equity Research Analyst

khaer.miftahul@kiwoom.co.id | 021 5010 5800



HEAD OFFICE

Treasury Tower 27th Floor Unit A, District 8 Kawasan SCBD Lot 28,
Jl.Jend.Sudirman Kav 52-53, Jakarta Selatan 12190

Tel : (021) 5010 5800

Fax : (021) 5010 5820

Email : cs@kiwoom.co.id

Terdaftar dan
diawasi oleh :  Otoritas
Jasa
Keuangan

OTHER DISCLOSURES

All Kiwoom's research reports made available to clients are simultaneously available on our own website <http://www.kiwoom.co.id/>. Not all research content is redistributed, e-mailed or made available to third-party aggregators. For all research reports available on a particular stock, please contact your sales representative. Any data discrepancies in this report could be the result of different calculations and/or adjustments.

DISCLAIMER

This report has been prepared and issued by PT Kiwoom Sekuritas Indonesia. Information has been obtained from sources believed to be reliable but Kiwoom Securities do not warrant its completeness or accuracy. Forward-looking information or statements in this report contain information that is based on forecast of future results, estimates of amounts not yet determinable, assumptions, and therefore involve known and unknown risks and uncertainties which may cause the actual results, performance or achievements of their subject matter to be materially different from current expectations. To the fullest extent allowed by law, PT Kiwoom Sekuritas Indonesia shall not be liable for any direct, indirect or consequential losses, loss of profits, damages, costs or expenses incurred or suffered by any person or organization arising from reliance on or use of any information contained on this report. The information that we provide should not be construed in any manner whatsoever as, personalized advice. No mention of a particular security in this report constitutes a recommendation to buy, sell or hold that or any security, or that any particular security, portfolio of securities, transaction or investment strategy is suitable for any specific person. This report is being supplied to you solely for your information and may not be reproduced by, further distributed to or published in whole or in part by, any other person.