



JCI Range Today

7,366 – 7,382 (Support), 7,480 – 7,496 (Resistance)



Jakarta Composite Index closed positive with bullish candle. Indicator from stochastic is death cross potential, MACD histogram is moving positive (line is bullish) and volume is increasing. Bearish scenario: If it moves bearish, JCI is expected to weaken to the support range 7,366 – 7,382. Bullish scenario: If JCI is able to move bullish again, JCI has the opportunity strengthen to the resistance range 7,480 – 7,496.

Stock Pick Today:



BBNI



RAJA



SRTG



UNTR



BBNI

Bank Negara Indonesia (Persero) Tbk.



(BBNI). Price closed higher and breakup trendline resistance. Price has the opportunity strengthen to the nearest resistance. Stochastic is still bullish, MACD histogram is moving positive (line is bullish) and volume is increasing. Confirm buy if the next candle returns bullish or buy on support if it goes down first. Be careful if you fail to stay above the support level or become a support breakdown. **(Trading Buy)**

TRADING STRATEGY:

Target Price:

The price has a bullish opportunity to test the resistance level 5,100. If it breaks level 5,100 then the price will go to level 5,175. We recommend to be careful if the price fails to break through or turn around the support area.

Stop Loss:

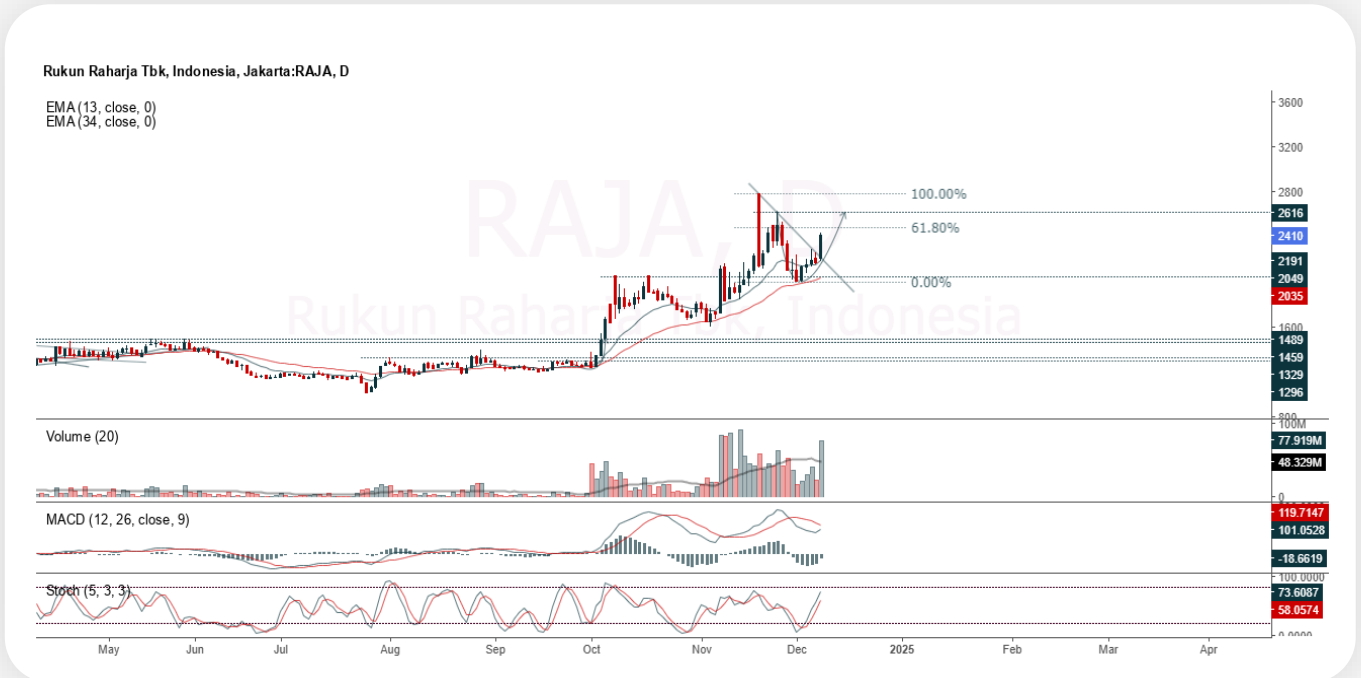
To minimize the risk of loss, we recommend placing a stop loss at level 4,860.

Entry Buy : 4,910 – 5,000
Target Price : 5,100 – 5,175
Support : 4,870 – 4,910
Cut loss : 4,860



RAJA

Rukun Raharja Tbk.



(RAJA). Price closed higher and breakup trendline resistance. Price has the opportunity strengthen to the nearest resistance. Stochastic is still bullish, MACD histogram is moving positive direction (line is golden cross potential) and volume is increasing significantly. Confirm buy if the next candle returns bullish or buy on support if it goes down first. Be careful if you fail to stay above the support level or become a support breakdown. **(Trading Buy)**

TRADING STRATEGY:

Target Price:

The price has a bullish opportunity to test the resistance level 2,460. If it breaks level 2,460 then the price will go to level 2,500. We recommend to be careful if the price fails to break through or turn around the support area.

Stop Loss:

To minimize the risk of loss, we recommend placing a stop loss at level 2,340.

- Entry Buy : 2,360 – 2,410
- Target Price : 2,460 – 2,500
- Support : 2,350 – 2,360
- Cut loss : 2,340



SRTG

Saratoga Investama Sedaya Tbk.



(SRTG). Price closed higher with swing low. Price has the opportunity strengthen to the nearest resistance. Stochastic is bearish, MACD histogram is moving positive (line is bullish) and volume is increasing. Confirm buy if the next candle returns bullish or buy on support if it goes down first. Be careful if you fail to stay above the support level or become a support breakdown. **(Trading Buy)**

TRADING STRATEGY:

Target Price:

The price has a bullish opportunity to test the resistance level 2,830. If it breaks level 2,830 then the price will go to level 2,880. We recommend to be careful if the price fails to break through or turn around the support area.

Stop Loss:

To minimize the risk of loss, we recommend placing a stop loss at level 2,700.

Entry Buy : 2,730 – 2,780
Target Price : 2,830 – 2,880
Support : 2,710 – 2,730
Cut loss : 2,700



UNTR

United Tractors Tbk.



(UNTR). Price closed higher and breakout resistance. Price has the opportunity strengthen to the next resistance. Stochastic is still bullish, MACD histogram is moving positive (line is bullish) and volume is increasing. Confirm buy if the next candle returns bullish or buy on support if it goes down first. Be careful if you fail to stay above the support level or become a support breakdown. **(Trading Buy)**

TRADING STRATEGY:

Target Price:

The price has a bullish opportunity to test the resistance level 29,000. If it breaks level 29,000 then the price will go to level 29,500. We recommend to be careful if the price fails to break through or turn around the support area.

Stop Loss:

To minimize the risk of loss, we recommend placing a stop loss at level 27,675.

- Entry Buy : 28,000 – 28,500
- Target Price : 29,000 – 29,500
- Support : 27,700 – 28,000
- Cut loss : 27,675



Forecast – Technical Analysis

Ticker	MA5	RSI Rec	MACD Trend	Recomm.	Pivot Point	Support		Resistance		Stop Loss Level
						1	2	1	2	
JCI	Negative	Trading	Positive	Hold	7,400	7,375	7,350	7,450	7,475	7,250
ACES	Negative	Oversold	Negative	Spec. Buy	770	765	755	780	785	745
ADMR	Negative	Trading	Positive	Hold	1,335	1,295	1,250	1,380	1,420	1,230
ADRO	Negative	Oversold	Negative	Spec. Buy	2,500	2,300	2,110	2,690	2,890	2,080
AKRA	Negative	Trading	Positive	Hold	1,330	1,315	1,295	1,350	1,365	1,275
AMMN	Negative	Trading	Positive	Hold	9,425	9,325	9,175	9,575	9,675	9,050
AMRT	Negative	Trading	Positive	Hold	2,990	2,940	2,890	3,040	3,090	2,845
ANTM	Negative	Trading	Positive	Hold	1,490	1,475	1,460	1,505	1,520	1,440
ARTO	Negative	Trading	Positive	Hold	2,695	2,660	2,625	2,730	2,765	2,585
ASII	Negative	Trading	Positive	Hold	5,175	5,125	5,050	5,250	5,300	4,975
BBCA	Negative	Trading	Positive	Hold	10,175	10,025	9,825	10,375	10,525	9,675
BBNI	Negative	Trading	Positive	Hold	4,955	4,860	4,785	5,025	5,125	4,715
BBRI	Negative	Trading	Positive	Hold	4,350	4,305	4,260	4,395	4,440	4,195
BBTN	Positive	Oversold	Negative	Spec. Buy	1,225	1,205	1,190	1,240	1,260	1,170
BMRI	Negative	Trading	Positive	Hold	6,275	6,175	6,075	6,375	6,475	5,975
BRIS	Negative	Trading	Positive	Hold	3,000	2,970	2,950	3,020	3,050	2,905
BRPT	Negative	Trading	Positive	Hold	945	930	915	960	975	900
BUKA	Negative	Trading	Positive	Hold	127	123	119	131	135	117
CPIN	Negative	Trading	Positive	Hold	4,930	4,880	4,860	4,950	5,000	4,785
ESSA	Positive	Trading	Positive	Spec. Buy	815	810	805	820	825	795
EXCL	Negative	Overbought	Positive	Sell	2,315	2,280	2,265	2,330	2,365	2,230
GOTO	Negative	Overbought	Positive	Sell	78	76	74	80	82	73
ICBP	Positive	Trading	Positive	Spec. Buy	11,775	11,750	11,675	11,850	11,875	11,500
INCO	Negative	Trading	Positive	Hold	3,635	3,605	3,575	3,665	3,695	3,520
INDF	Negative	Overbought	Positive	Sell	8,050	7,875	7,725	8,200	8,375	7,600
INKP	Positive	Oversold	Positive	Buy	7,150	7,075	7,025	7,200	7,275	6,925
INTP	Negative	Trading	Positive	Hold	6,975	6,850	6,800	7,025	7,150	6,675
ISAT	Negative	Trading	Positive	Hold	2,485	2,450	2,405	2,530	2,565	2,370
ITMG	Negative	Overbought	Positive	Sell	27,750	27,575	27,350	27,975	28,150	26,925
JSMR	Negative	Trading	Positive	Hold	4,555	4,515	4,485	4,585	4,625	4,415
KLBF	Negative	Trading	Positive	Hold	1,490	1,465	1,455	1,500	1,525	1,430
MAPI	Positive	Trading	Negative	Hold	1,405	1,375	1,355	1,425	1,455	1,335
MBMA	Negative	Trading	Positive	Hold	515	510	505	520	525	497
MDKA	Negative	Oversold	Negative	Spec. Buy	1,925	1,890	1,875	1,940	1,975	1,845
MEDC	Negative	Trading	Positive	Hold	1,140	1,125	1,110	1,155	1,170	1,095
MTEL	Negative	Overbought	Positive	Sell	670	665	655	680	685	645
PGAS	Negative	Overbought	Positive	Sell	1,645	1,625	1,605	1,665	1,685	1,580
PGEO	Negative	Oversold	Negative	Spec. Buy	980	970	960	990	1,000	945
PTBA	Negative	Trading	Positive	Hold	2,745	2,725	2,715	2,755	2,775	2,670
SIDO	Negative	Trading	Positive	Hold	585	580	580	585	590	570
SMGR	Positive	Oversold	Negative	Spec. Buy	3,300	3,270	3,240	3,330	3,360	3,190
SMRA	Negative	Oversold	Positive	Spec. Buy	535	525	510	550	560	505
TLKM	Negative	Trading	Positive	Hold	2,750	2,730	2,710	2,770	2,790	2,670
TOWR	Negative	Oversold	Positive	Spec. Buy	725	710	700	735	750	685
UNTR	Negative	Trading	Positive	Hold	28,250	28,000	27,725	28,525	28,775	27,300
UNVR	Negative	Trading	Positive	Hold	1,885	1,860	1,835	1,910	1,935	1,810



Kiwoom Research Team



Sukarno Alatas

Head of Equity Research

sukarno@kiwoom.co.id | 021 5010 5800



Abdul Azis Setyo W.

Equity Research Analyst

azis@kiwoom.co.id | 021 5010 5800



Miftahul Khaer

Equity Research Analyst

khaer.miftahul@kiwoom.co.id | 021 5010 5800



HEAD OFFICE

Treasury Tower 27th Floor Unit A, District 8 Kawasan SCBD Lot 28,
Jl.Jend.Sudirman Kav 52-53, Jakarta Selatan 12190

Tel : (021) 5010 5800

Fax : (021) 5010 5820

Email : cs@kiwoom.co.id

PT Kiwoom Sekuritas Indonesia is licensed and supervised by the Financial Services Authority (OJK)

OTHER DISCLOSURES

All Kiwoom's research reports made available to clients are simultaneously available on our own website <http://www.kiwoom.co.id/>. Not all research content is redistributed, e-mailed or made available to third-party aggregators. For all research reports available on a particular stock, please contact your sales representative. Any data discrepancies in this report could be the result of different calculations and/or adjustments.

DISCLAIMER

This report has been prepared and issued by PT Kiwoom Sekuritas Indonesia. Information has been obtained from sources believed to be reliable but Kiwoom Securities do not warrant its completeness or accuracy. Forward-looking information or statements in this report contain information that is based on forecast of future results, estimates of amounts not yet determinable, assumptions, and therefore involve known and unknown risks and uncertainties which may cause the actual results, performance or achievements of their subject matter to be materially different from current expectations. To the fullest extent allowed by law, PT Kiwoom Sekuritas Indonesia shall not be liable for any direct, indirect or consequential losses, loss of profits, damages, costs or expenses incurred or suffered by any person or organization arising from reliance on or use of any information contained on this report. The information that we provide should not be construed in any manner whatsoever as, personalized advice. No mention of a particular security in this report constitutes a recommendation to buy, sell or hold that or any security, or that any particular security, portfolio of securities, transaction or investment strategy is suitable for any specific person. This report is being supplied to you solely for your information and may not be reproduced by, further distributed to or published in whole or in part by, any other person.