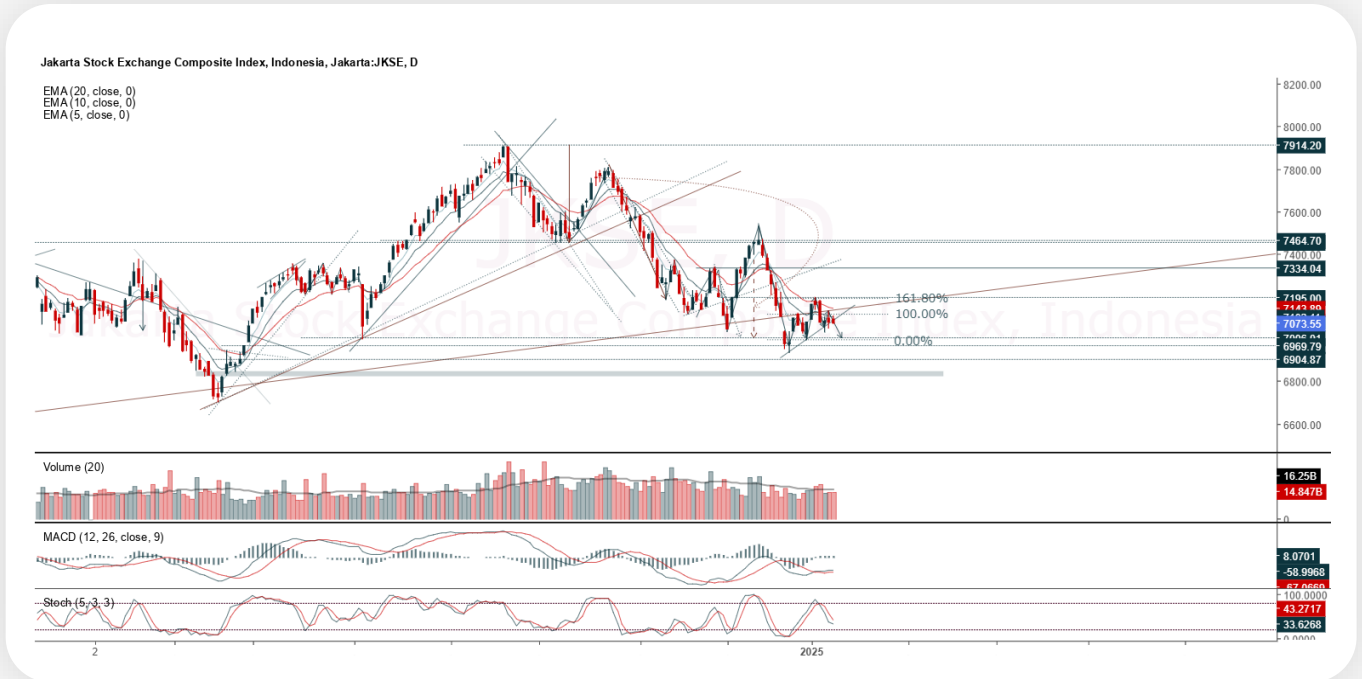




JCI Range Today 6,998 – 7,014 (Support), 7,106 – 7,122 (Resistance)



Jakarta Composite Index closed negative with bearish candle. Indicator from stochastic is still bearish, MACD histogram is moving positive (line is bullish) and volume is increasing. Bearish scenario: If it moves bearish, JCI is expected to weaken to the support range 6,998 – 7,014. Bullish scenario: If JCI is able to move bullish, JCI has the opportunity strengthen to the resistance range 7,106 – 7,122.

Stock Pick Today:



ASII



CLEO



JSMR



PANI



ASII

Astra International Tbk.



(ASII). Price closed higher and breakout resistance. Price has the opportunity strengthen to the next resistance. Stochastic is golden cross, MACD histogram is moving positive direction (line is golden cross potential) and volume is increasing. Confirm buy if the next candle returns bullish or buy on support if it goes down first. Be careful if you fail to stay above the support level or become a support breakdown.
(Trading Buy)

TRADING STRATEGY:

Target Price:

The price has a bullish opportunity to test the resistance level 5,025. If it breaks level 5,025 then the price will go to level 5,100. We recommend to be careful if the price fails to break through or turn around the support area.

Stop Loss:

To minimize the risk of loss, we recommend placing a stop loss at level 4,790.

Entry Buy	: 4,840 – 4,930
Target Price	: 5,025 – 5,100
Support	: 4,800 – 4,840
Cut loss	: 4,790



CLEO

Sariguna Primatirta Tbk.



(CLEO). Price closed higher and breakup dynamic resistance at EMA 5. Price has the opportunity strengthen to the nearest resistance. Stochastic is golden cross, MACD histogram is moving negative (line is death cross) and volume is increasing. Confirm buy if the next candle returns bullish or buy on support if it goes down first. Be careful if you fail to stay above the support level or become a support breakdown. **(Trading Buy)**

TRADING STRATEGY:

Target Price:

The price has a bullish opportunity to test the resistance level 1,540. If it breaks level 1,540 then the price will go to level 1,565. We recommend to be careful if the price fails to break through or turn around the support area.

Stop Loss:

To minimize the risk of loss, we recommend placing a stop loss at level 1,465.

Entry Buy	: 1,480 – 1,510
Target Price	: 1,540 – 1,565
Support	: 1,470 – 1,480
Cut loss	: 1,465



JSMR

Jasa Marga (Persero) Tbk.



(JSMR). Price closed higher and breakout resistance. Price has the opportunity strengthen to the next resistance. Stochastic is still bearish, MACD histogram is moving positive (line is bullish) and volume is decreasing. Confirm buy if the next candle returns bullish or buy on support if it goes down first. Be careful if you fail to stay above the support level or become a support breakdown. **(Trading Buy)**

TRADING STRATEGY:

Target Price:

The price has a bullish opportunity to test the resistance level 4,560. If it breaks level 4,560 then the price will go to level 4,640. We recommend to be careful if the price fails to break through or turn around the support area.

Stop Loss:

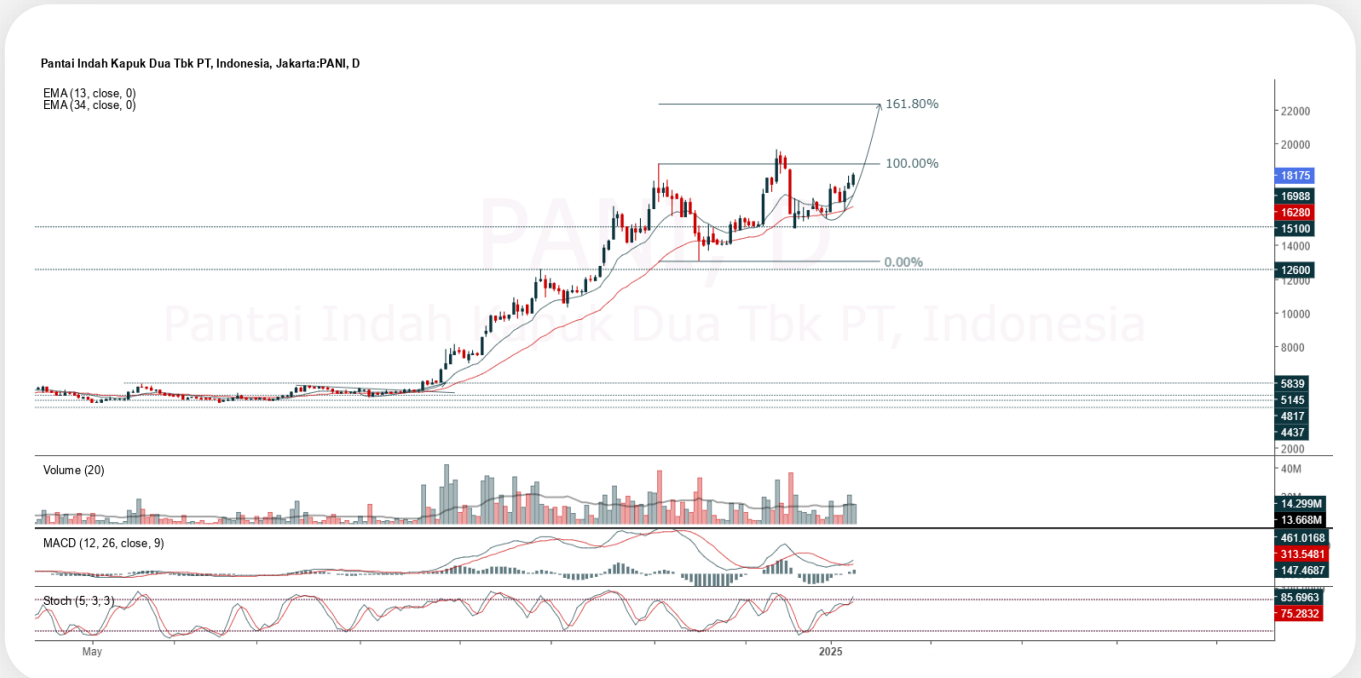
To minimize the risk of loss, we recommend placing a stop loss at level 4,350.

Entry Buy	: 4,400 – 4,480
Target Price	: 4,560 – 4,640
Support	: 4,360 – 4,400
Cut loss	: 4,350



PANI

Pantai Indah kapuk Dua Tbk.



(PANI). Price closed higher with bullish candle. Price has the opportunity strengthen to the nearest resistance. Stochastic is bullish, MACD histogram is moving positive (line is bullish) and volume is decreasing. Confirm buy if the next candle returns bullish or buy on support if it goes down first. Be careful if you fail to stay above the support level or become a support breakdown. **(Trading Buy)**

TRADING STRATEGY:

Target Price:

The price has a bullish opportunity to test the resistance level 18,500. If it breaks level 18,500 then the price will go to level 18,800. We recommend to be careful if the price fails to break through or turn around the support area.

Stop Loss:

To minimize the risk of loss, we recommend placing a stop loss at level 17,650.

Entry Buy : 17,850 – 18,175
Target Price : 18,500 – 18,800
Support : 17,675 – 17,850
Cut loss : 17,650



Forecast – Technical Analysis

Ticker	MA5	RSI Rec	MACD Trend	Recomm.	Pivot Point	Support 1	Support 2	Resistance 1	Resistance 2	Stop Loss Level
JCI	Positive	Trading	Positive	Spec. Buy	7,075	7,050	7,025	7,100	7,125	6,925
ACES	Positive	Oversold	Negative	Spec. Buy	715	700	685	730	745	675
ADMR	Positive	Oversold	Negative	Spec. Buy	1,040	1,020	1,000	1,060	1,080	985
ADRO	Positive	Oversold	Positive	Buy	2,385	2,335	2,295	2,425	2,475	2,260
AKRA	Positive	Trading	Negative	Hold	1,170	1,130	1,085	1,215	1,255	1,070
AMMN	Positive	Oversold	Negative	Spec. Buy	8,350	8,200	8,125	8,425	8,575	8,000
AMRT	Negative	Trading	Positive	Hold	2,840	2,775	2,710	2,905	2,970	2,665
ANTM	Positive	Trading	Negative	Hold	1,425	1,415	1,395	1,445	1,455	1,375
ARTO	Negative	Trading	Positive	Hold	2,580	2,520	2,480	2,620	2,680	2,445
ASII	Positive	Oversold	Negative	Spec. Buy	4,885	4,820	4,765	4,940	5,000	4,695
BBCA	Positive	Trading	Negative	Hold	9,800	9,725	9,650	9,875	9,950	9,500
BBNI	Positive	Oversold	Positive	Buy	4,375	4,340	4,315	4,400	4,435	4,250
BBRI	Positive	Trading	Positive	Spec. Buy	4,060	4,015	3,990	4,085	4,130	3,930
BBTN	Positive	Oversold	Positive	Buy	1,140	1,125	1,120	1,145	1,160	1,100
BMRI	Positive	Trading	Positive	Spec. Buy	5,750	5,700	5,675	5,775	5,825	5,575
BRIS	Positive	Oversold	Negative	Spec. Buy	2,685	2,655	2,635	2,705	2,735	2,595
BRPT	Negative	Overbought	Positive	Sell	980	965	950	995	1,010	935
BUKA	Positive	Oversold	Negative	Spec. Buy	118	111	105	124	131	103
CPIN	Negative	Trading	Positive	Hold	4,825	4,785	4,765	4,845	4,885	4,690
ESSA	Positive	Trading	Positive	Spec. Buy	805	785	770	820	840	755
EXCL	Positive	Trading	Negative	Hold	2,240	2,220	2,200	2,260	2,280	2,165
GOTO	Negative	Overbought	Positive	Sell	80	79	77	82	83	76
ICBP	Positive	Oversold	Negative	Spec. Buy	11,075	11,025	11,000	11,100	11,150	10,825
INCO	Positive	Oversold	Negative	Spec. Buy	3,420	3,395	3,380	3,435	3,460	3,325
INDF	Positive	Trading	Negative	Hold	7,475	7,400	7,275	7,600	7,675	7,175
INKP	Positive	Oversold	Negative	Spec. Buy	6,450	6,350	6,300	6,500	6,600	6,200
INTP	Positive	Oversold	Negative	Spec. Buy	6,475	6,375	6,300	6,550	6,650	6,200
ISAT	Positive	Trading	Negative	Hold	2,375	2,320	2,285	2,410	2,465	2,250
ITMG	Positive	Oversold	Negative	Spec. Buy	25,375	25,250	25,150	25,475	25,600	24,775
JSMR	Negative	Trading	Positive	Hold	4,455	4,350	4,275	4,530	4,635	4,210
KLBF	Positive	Oversold	Negative	Spec. Buy	1,270	1,260	1,240	1,290	1,300	1,225
MAPI	Negative	Trading	Positive	Hold	1,365	1,345	1,330	1,380	1,400	1,310
MBMA	Positive	Oversold	Negative	Spec. Buy	413	403	397	419	429	391
MDKA	Positive	Strong Buy	Negative	Buy	1,360	1,320	1,290	1,390	1,430	1,270
MEDC	Negative	Trading	Positive	Hold	1,130	1,115	1,100	1,145	1,160	1,085
MTEL	Positive	Overbought	Negative	Sell	675	670	665	680	685	655
PGAS	Negative	Trading	Positive	Hold	1,670	1,650	1,630	1,690	1,710	1,605
PGEO	Positive	Oversold	Negative	Spec. Buy	905	895	885	915	925	870
PTBA	Positive	Trading	Positive	Spec. Buy	2,630	2,615	2,600	2,645	2,660	2,560
SIDO	Negative	Trading	Positive	Hold	605	590	580	615	630	570
SMGR	Positive	Oversold	Negative	Spec. Buy	3,020	2,950	2,900	3,070	3,140	2,855
SMRA	Positive	Oversold	Positive	Buy	484	478	474	488	494	467
TLKM	Positive	Trading	Negative	Hold	2,660	2,615	2,580	2,695	2,740	2,540
TOWR	Negative	Trading	Positive	Hold	665	660	640	685	690	630
UNTR	Positive	Oversold	Negative	Spec. Buy	25,150	24,825	24,625	25,350	25,675	24,250
UNVR	Positive	Trading	Negative	Hold	1,715	1,680	1,660	1,735	1,770	1,635



Kiwoom Research Team



Sukarno Alatas

Head of Equity Research

sukarno@kiwoom.co.id | 021 5010 5800



Abdul Azis Setyo W.

Equity Research Analyst

azis@kiwoom.co.id | 021 5010 5800



Miftahul Khaer

Equity Research Analyst

khaer.miftahul@kiwoom.co.id | 021 5010 5800



HEAD OFFICE

Treasury Tower 27th Floor Unit A, District 8 Kawasan SCBD Lot 28,
Jl.Jend.Sudirman Kav 52-53, Jakarta Selatan 12190

Tel : (021) 5010 5800

Fax : (021) 5010 5820

Email : cs@kiwoom.co.id

PT Kiwoom Sekuritas Indonesia is licensed and supervised by the Financial Services Authority (OJK)

OTHER DISCLOSURES

All Kiwoom's research reports made available to clients are simultaneously available on our own website <http://www.kiwoom.co.id/>. Not all research content is redistributed, e-mailed or made available to third-party aggregators. For all research reports available on a particular stock, please contact your sales representative. Any data discrepancies in this report could be the result of different calculations and/or adjustments.

DISCLAIMER

This report has been prepared and issued by PT Kiwoom Sekuritas Indonesia. Information has been obtained from sources believed to be reliable but Kiwoom Securities do not warrant its completeness or accuracy. Forward-looking information or statements in this report contain information that is based on forecast of future results, estimates of amounts not yet determinable, assumptions, and therefore involve known and unknown risks and uncertainties which may cause the actual results, performance or achievements of their subject matter to be materially different from current expectations. To the fullest extent allowed by law, PT Kiwoom Sekuritas Indonesia shall not be liable for any direct, indirect or consequential losses, loss of profits, damages, costs or expenses incurred or suffered by any person or organization arising from reliance on or use of any information contained on this report. The information that we provide should not be construed in any manner whatsoever as, personalized advice. No mention of a particular security in this report constitutes a recommendation to buy, sell or hold that or any security, or that any particular security, portfolio of securities, transaction or investment strategy is suitable for any specific person. This report is being supplied to you solely for your information and may not be reproduced by, further distributed to or published in whole or in part by, any other person.