



JCI Range Today 7,016 – 7,036 (Support), 7,121 – 7,141 (Resistance)



Jakarta Composite Index closed higher and breakout resistance. Indicator from stochastic is golden cross, MACD histogram is moving positive (line is golden cross) and volume is increasing. Bearish scenario: If it moves bearish, JCI is expected to weaken to the support range 7,016 – 7,036. Bullish scenario: If JCI is able to move bullish, JCI has the opportunity strengthen to the resistance range 7,121 – 7,141.

Stock Pick Today:



ACES



ASII



BBRI



INDF



ACES

Aspirasi Hidup Indonesia Tbk.



(ACES). Price closed higher and breakup dynamic resistance at EMA 5 & 10. Price has the opportunity strengthen to the nearest resistance. Stochastic is still bullish, MACD histogram is moving positive direction (line is golden cross potential) and volume is increasing. Confirm buy if the next candle returns bullish or buy on support if it goes down first. Be careful if you fail to stay above the support level or become a support breakdown. **(Trading Buy)**

TRADING STRATEGY:

Target Price:

The price has a bullish opportunity to test the resistance level 765. If it breaks level 765 then the price will go to level 780. We recommend to be careful if the price fails to break through or turn around the support area.

Stop Loss:

To minimize the risk of loss, we recommend placing a stop loss at level 725.

Entry Buy	:	735 – 750
Target Price	:	765 – 780
Support	:	730 – 735
Cut loss	:	725



ASII

Astra International Tbk.



(ASII). Price closed higher and breakout resistance. Price has the opportunity strengthen to the next resistance. Stochastic is golden cross, MACD histogram is moving positive direction (line is golden cross potential) and volume is decreasing. Confirm buy if the next candle returns bullish or buy on support if it goes down first. Be careful if you fail to stay above the support level or become a support breakdown.
(Trading Buy)

TRADING STRATEGY:

Target Price:

The price has a bullish opportunity to test the resistance level 5,050. If it breaks level 5,050 then the price will go to level 5,150. We recommend to be careful if the price fails to break through or turn around the support area.

Stop Loss:

To minimize the risk of loss, we recommend placing a stop loss at level 4,790.

Entry Buy	: 4,850 – 4,940
Target Price	: 5,050 – 5,150
Support	: 4,800 – 4,850
Cut loss	: 4,790



BBRI

Bank Rakyat Indonesia (Persero) Tbk.



(BBRI). Price closed higher and testing resistance. Price is expected to test the nearest resistance and continue strengthening to the next resistance. Stochastic is golden cross, MACD histogram is moving positive direction (line is golden cross potential) and volume is increasing. Confirm buy if the next candle returns bullish or buy on support if it goes down first. Be careful if you fail to stay above the support level or become a support breakdown. **(Trading Buy)**

TRADING STRATEGY:

Target Price:

The price has a bullish opportunity to test the resistance level 4,170. If it breaks level 4,170 then the price will go to level 4,240. We recommend to be careful if the price fails to break through or turn around the support area.

Stop Loss:

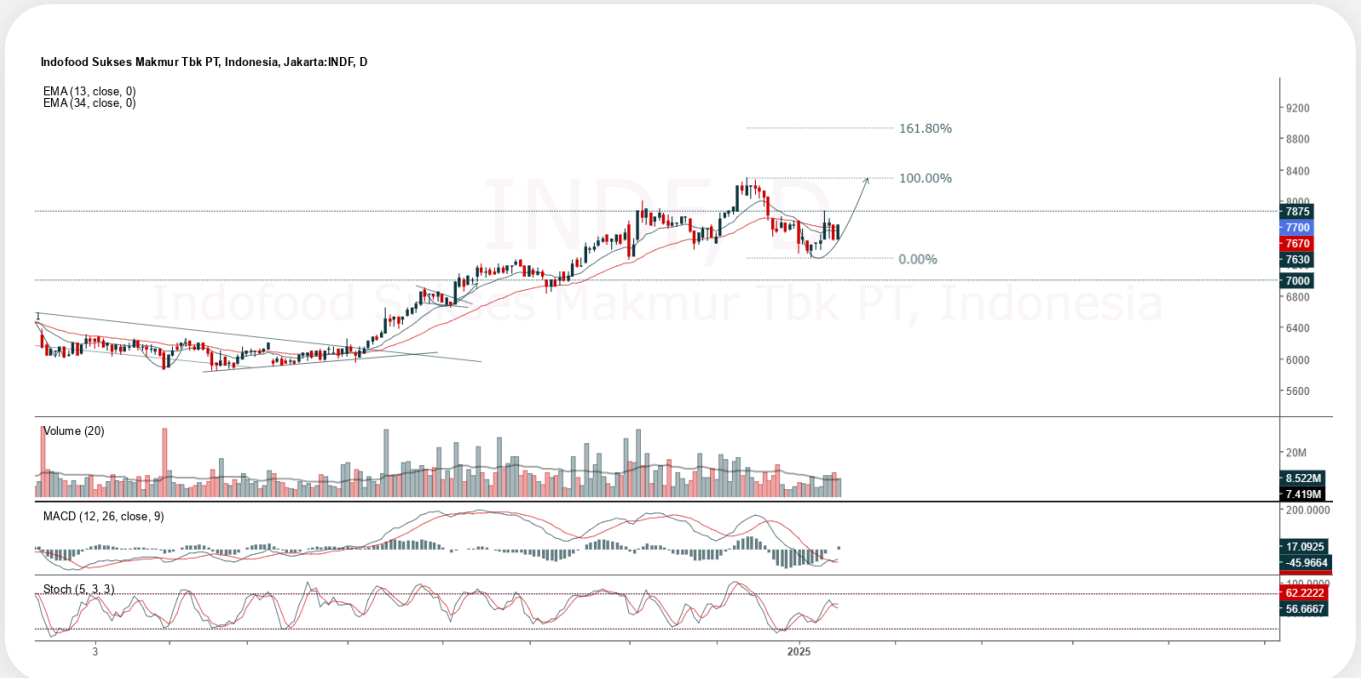
To minimize the risk of loss, we recommend placing a stop loss at level 3,980.

Entry Buy	: 4,030 – 4,090
Target Price	: 4,170 – 4,240
Support	: 3,990 – 4,030
Cut loss	: 3,980



INDF

Indofood Sukses Makmur Tbk.



(INDF). Price closed higher and breakup dynamic resistance at EMA 5 & 10. Price has the opportunity strengthen to the nearest resistance. Stochastic is bearish, MACD histogram is moving positive (line is golden cross) and volume is decreasing. Confirm buy if the next candle returns bullish or buy on support if it goes down first. Be careful if you fail to stay above the support level or become a support breakdown. **(Trading Buy)**

TRADING STRATEGY:

Target Price:

The price has a bullish opportunity to test the resistance level 7,850. If it breaks level 7,850 then the price will go to level 8,000. We recommend to be careful if the price fails to break through or turn around the support area.

Stop Loss:

To minimize the risk of loss, we recommend placing a stop loss at level 7,475.

Entry Buy : 7,575 – 7,700
Target Price : 7,850 – 8,000
Support : 7,500 – 7,575
Cut loss : 7,475



Forecast – Technical Analysis

Ticker	MA5	RSI Rec	MACD Trend	Recomm.	Pivot Point	Support 1	Support 2	Resistance 1	Resistance 2	Stop Loss Level
JCI	Positive	Trading	Positive	Spec. Buy	7,025	6,975	6,925	7,100	7,150	6,825
ACES	Negative	Oversold	Negative	Spec. Buy	745	735	725	755	765	715
ADMN	Positive	Oversold	Negative	Spec. Buy	1,040	1,030	1,015	1,055	1,065	1,000
ADRO	Positive	Oversold	Positive	Buy	2,395	2,355	2,325	2,425	2,465	2,290
AKRA	Negative	Trading	Positive	Hold	1,215	1,205	1,190	1,230	1,240	1,170
AMMN	Negative	Oversold	Negative	Spec. Buy	8,250	8,125	7,900	8,475	8,600	7,775
AMRT	Positive	Trading	Positive	Spec. Buy	2,835	2,795	2,765	2,865	2,905	2,720
ANTM	Negative	Trading	Positive	Hold	1,520	1,515	1,495	1,540	1,545	1,475
ARTO	Positive	Trading	Positive	Spec. Buy	2,500	2,445	2,400	2,545	2,600	2,360
ASII	Negative	Oversold	Negative	Spec. Buy	4,865	4,785	4,705	4,945	5,025	4,630
BBCA	Negative	Trading	Negative	Sell	9,675	9,575	9,425	9,825	9,925	9,300
BBNI	Positive	Oversold	Negative	Spec. Buy	4,285	4,140	4,005	4,420	4,565	3,945
BBRI	Positive	Oversold	Negative	Spec. Buy	3,965	3,840	3,715	4,090	4,215	3,660
BBTN	Positive	Oversold	Negative	Spec. Buy	1,075	1,045	1,020	1,100	1,130	1,005
BMRI	Positive	Oversold	Negative	Spec. Buy	5,625	5,425	5,250	5,800	6,000	5,175
BRIS	Negative	Trading	Negative	Sell	2,715	2,650	2,595	2,770	2,835	2,555
BRPT	Negative	Trading	Positive	Hold	965	935	910	990	1,020	895
BUKA	Negative	Trading	Negative	Sell	121	115	111	125	131	109
CPIN	Positive	Oversold	Negative	Spec. Buy	4,600	4,555	4,520	4,635	4,680	4,450
ESSA	Negative	Trading	Positive	Hold	870	855	845	880	895	830
EXCL	Negative	Trading	Negative	Sell	2,260	2,250	2,240	2,270	2,280	2,205
GOTO	Negative	Overbought	Positive	Sell	80	79	77	82	83	76
ICBP	Positive	Oversold	Negative	Spec. Buy	10,750	10,625	10,450	10,925	11,050	10,300
INCO	Negative	Trading	Positive	Hold	3,660	3,610	3,530	3,740	3,790	3,475
INDF	Negative	Trading	Negative	Sell	7,625	7,525	7,450	7,700	7,800	7,325
INKP	Negative	Oversold	Negative	Spec. Buy	6,525	6,400	6,325	6,600	6,725	6,225
INTP	Positive	Strong Buy	Negative	Buy	6,075	6,000	5,925	6,150	6,225	5,825
ISAT	Negative	Trading	Negative	Sell	2,370	2,350	2,330	2,390	2,410	2,295
ITMG	Negative	Oversold	Negative	Spec. Buy	25,575	25,400	25,225	25,750	25,925	24,850
JSMR	Positive	Trading	Positive	Spec. Buy	4,245	4,205	4,155	4,295	4,335	4,090
KLBF	Positive	Oversold	Negative	Spec. Buy	1,255	1,240	1,230	1,265	1,280	1,210
MAPI	Positive	Trading	Positive	Spec. Buy	1,360	1,330	1,310	1,380	1,410	1,290
MBMA	Negative	Trading	Negative	Sell	440	432	426	446	454	420
MDKA	Negative	Trading	Positive	Hold	1,625	1,600	1,575	1,650	1,675	1,550
MEDC	Negative	Overbought	Positive	Sell	1,185	1,175	1,150	1,210	1,220	1,130
MTEL	Positive	Trading	Negative	Hold	670	665	660	675	680	650
PGAS	Negative	Trading	Positive	Hold	1,660	1,645	1,635	1,670	1,685	1,610
PGEO	Negative	Oversold	Positive	Spec. Buy	920	905	890	935	950	875
PTBA	Negative	Trading	Positive	Hold	2,645	2,620	2,595	2,670	2,695	2,555
SIDO	Negative	Trading	Positive	Hold	590	585	580	595	600	570
SMGR	Positive	Oversold	Negative	Spec. Buy	2,845	2,775	2,725	2,895	2,965	2,680
SMRA	Positive	Oversold	Negative	Spec. Buy	457	446	435	468	479	428
TLKM	Positive	Trading	Negative	Hold	2,640	2,610	2,590	2,660	2,690	2,550
TOWR	Positive	Trading	Positive	Spec. Buy	660	645	625	680	695	615
UNTR	Negative	Trading	Negative	Sell	25,725	25,575	25,475	25,825	25,975	25,075
UNVR	Positive	Trading	Negative	Hold	1,745	1,725	1,715	1,755	1,775	1,690



Kiwoom Research Team



Sukarno Alatas

Head of Equity Research

sukarno@kiwoom.co.id | 021 5010 5800



Abdul Azis Setyo W.

Equity Research Analyst

azis@kiwoom.co.id | 021 5010 5800



Miftahul Khaer

Equity Research Analyst

khaer.miftahul@kiwoom.co.id | 021 5010 5800



HEAD OFFICE

Treasury Tower 27th Floor Unit A, District 8 Kawasan SCBD Lot 28,
Jl.Jend.Sudirman Kav 52-53, Jakarta Selatan 12190

Tel : (021) 5010 5800

Fax : (021) 5010 5820

Email : cs@kiwoom.co.id

PT Kiwoom Sekuritas Indonesia is licensed and supervised by the Financial Services Authority (OJK)

OTHER DISCLOSURES

All Kiwoom's research reports made available to clients are simultaneously available on our own website <http://www.kiwoom.co.id/>. Not all research content is redistributed, e-mailed or made available to third-party aggregators. For all research reports available on a particular stock, please contact your sales representative. Any data discrepancies in this report could be the result of different calculations and/or adjustments.

DISCLAIMER

This report has been prepared and issued by PT Kiwoom Sekuritas Indonesia. Information has been obtained from sources believed to be reliable but Kiwoom Securities do not warrant its completeness or accuracy. Forward-looking information or statements in this report contain information that is based on forecast of future results, estimates of amounts not yet determinable, assumptions, and therefore involve known and unknown risks and uncertainties which may cause the actual results, performance or achievements of their subject matter to be materially different from current expectations. To the fullest extent allowed by law, PT Kiwoom Sekuritas Indonesia shall not be liable for any direct, indirect or consequential losses, loss of profits, damages, costs or expenses incurred or suffered by any person or organization arising from reliance on or use of any information contained on this report. The information that we provide should not be construed in any manner whatsoever as, personalized advice. No mention of a particular security in this report constitutes a recommendation to buy, sell or hold that or any security, or that any particular security, portfolio of securities, transaction or investment strategy is suitable for any specific person. This report is being supplied to you solely for your information and may not be reproduced by, further distributed to or published in whole or in part by, any other person.