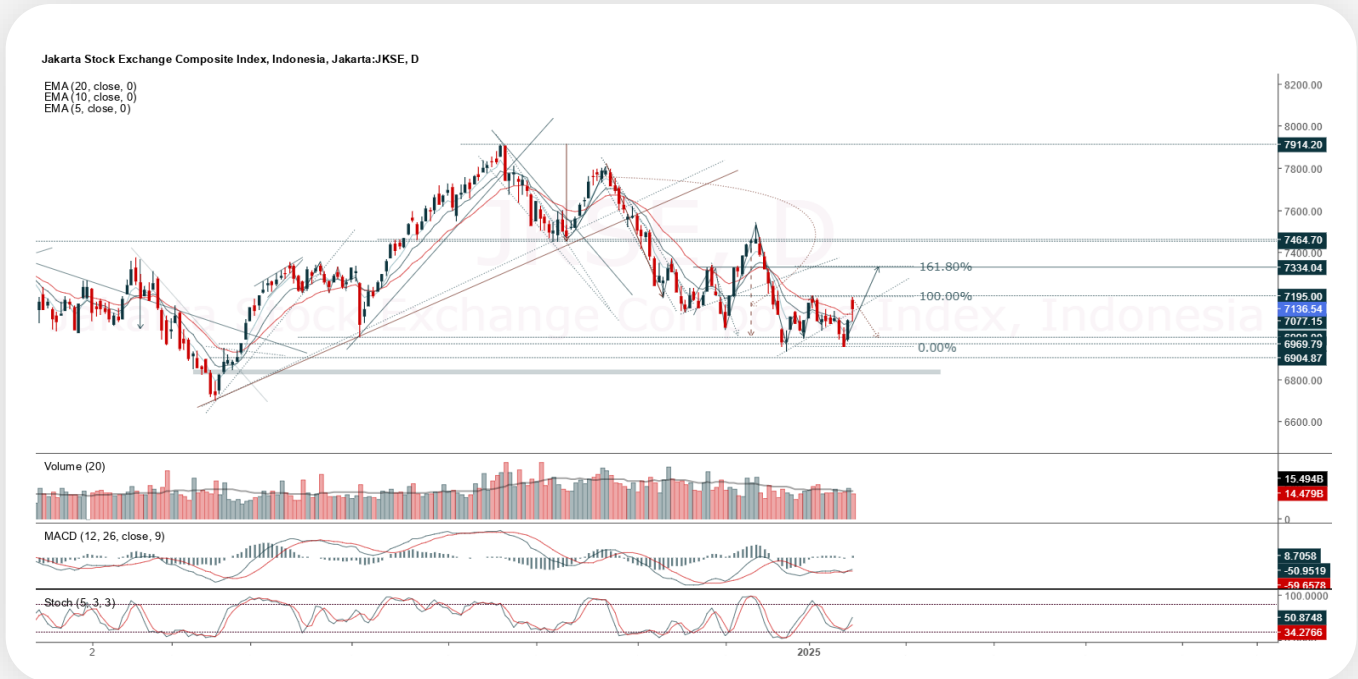




JCI Range Today

7,042 – 7,062 (Support), 7,141 – 7,161 (Resistance)



Jakarta Composite Index closed positive with bullish candle. Indicator from stochastic is bullish, MACD histogram is moving positive (line is bullish) and volume is decreasing. Bearish scenario: If it moves bearish, JCI is expected to weaken to the support range 7,042 – 7,062. Bullish scenario: If JCI is able to move bullish, JCI has the opportunity strengthen to the resistance range 7,141 – 7,161.

Stock Pick Today:



ASSA



DSSA



UNTR



UNVR



ASSA

Adi Sarana Armada Tbk.



(ASSA). Price closed higher and breakup dynamic resistance at EMA 5 & 10. Price has the opportunity strengthen to the nearest resistance. Stochastic is still bullish, MACD histogram is moving positive (line is bullish) and volume is increasing. Confirm buy if the next candle returns bullish or buy on support if it goes down first. Be careful if you fail to stay above the support level or become a support breakdown. **(Trading Buy)**

TRADING STRATEGY:

Target Price:

The price has a bullish opportunity to test the resistance level 695. If it breaks level 695 then the price will go to level 705. We recommend to be careful if the price fails to break through or turn around the support area.

Stop Loss:

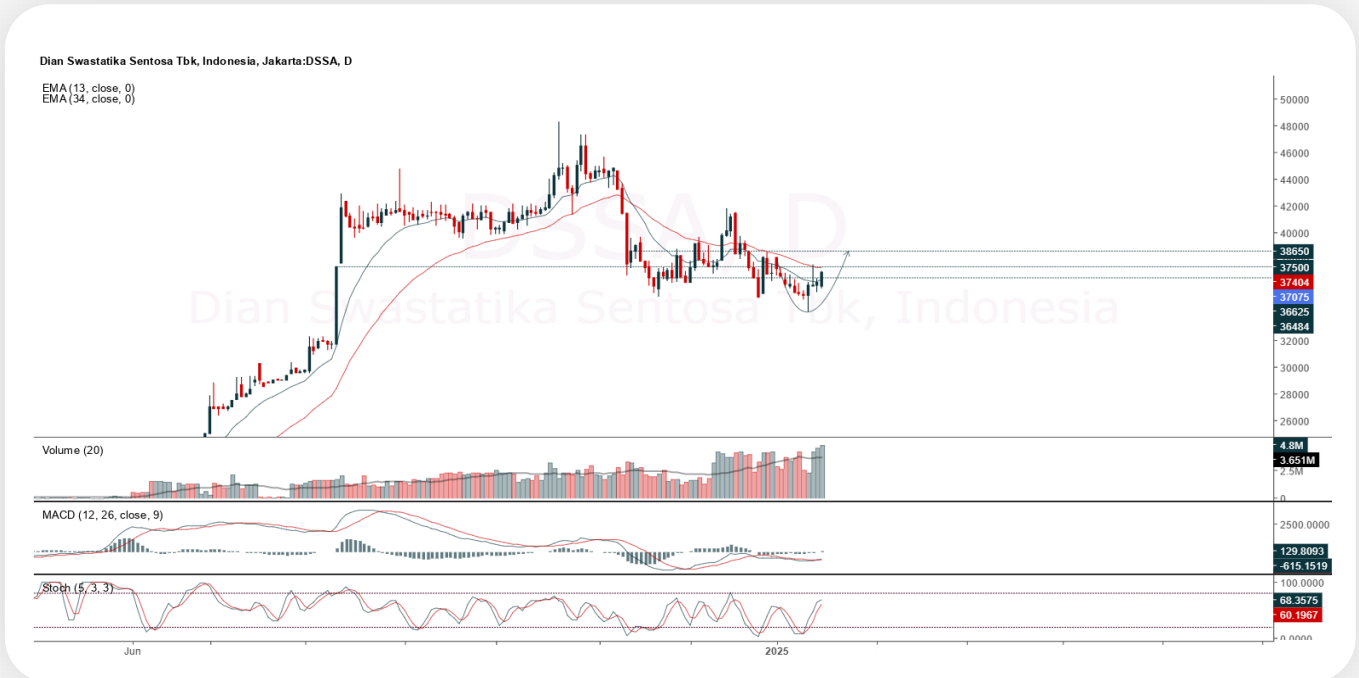
To minimize the risk of loss, we recommend placing a stop loss at level 660.

Entry Buy	: 670 – 680
Target Price	: 695 – 705
Support	: 665 – 670
Cut loss	: 660



DSSA

Dian Swastatika Sentosa Tbk.



(DSSA). Price closed higher and breakout resistance. Price has the opportunity strengthen to the next resistance. Stochastic is still bullish, MACD histogram is moving positive (line is bullish) and volume is increasing. Confirm buy if the next candle returns bullish or buy on support if it goes down first. Be careful if you fail to stay above the support level or become a support breakdown. **(Trading Buy)**

TRADING STRATEGY:

Target Price:

The price has a bullish opportunity to test the resistance level 37,750. If it breaks level 37,750 then the price will go to level 38,450. We recommend to be careful if the price fails to break through or turn around the support area.

Stop Loss:

To minimize the risk of loss, we recommend placing a stop loss at level 35,975.

- Entry Buy : 36,400 – 37,075
- Target Price : 37,750 – 38,450
- Support : 36,000 – 36,400
- Cut loss : 35,975



UNTR

United Tractors Tbk.



(UNTR). Price closed higher and breakout resistance. Price has the opportunity strengthen to the next resistance. Stochastic is still bullish, MACD histogram is moving positive (line is bullish) and volume is increasing. Confirm buy if the next candle returns bullish or buy on support if it goes down first. Be careful if you fail to stay above the support level or become a support breakdown. **(Trading Buy)**

TRADING STRATEGY:

Target Price:

The price has a bullish opportunity to test the resistance level 26,650. If it breaks level 26,650 then the price will go to level 27,100. We recommend to be careful if the price fails to break through or turn around the support area.

Stop Loss:

To minimize the risk of loss, we recommend placing a stop loss at level 25,425.

Entry Buy : 25,700 – 26,175
Target Price : 26,650 – 27,100
Support : 25,450 – 25,700
Cut loss : 25,425



UNVR

Unilever Indonesia Tbk.



(UNVR). Price closed higher and back to rally. Price has the opportunity strengthen to the nearest resistance. Stochastic is still bullish, MACD histogram is moving positive (line is golden cross) and volume is increasing. Confirm buy if the next candle returns bullish or buy on support if it goes down first. Be careful if you fail to stay above the support level or become a support breakdown. **(Trading Buy)**

TRADING STRATEGY:

Target Price:

The price has a bullish opportunity to test the resistance level 1,820. If it breaks level 1,820 then the price will go to level 1,850. We recommend to be careful if the price fails to break through or turn around the support area.

Stop Loss:

To minimize the risk of loss, we recommend placing a stop loss at level 1,735.

Entry Buy	: 1,755 – 1,785
Target Price	: 1,820 – 1,850
Support	: 1,740 – 1,755
Cut loss	: 1,735



Forecast – Technical Analysis

Ticker	MA5	RSI Rec	MACD Trend	Recomm.	Pivot Point	Support		Resistance		Stop Loss Level
						1	2	1	2	
JCI	Positive	Trading	Positive	Spec. Buy	7,125	7,075	7,025	7,200	7,250	6,900
ACES	Negative	Trading	Negative	Sell	750	740	735	755	765	725
ADMN	Negative	Oversold	Negative	Spec. Buy	1,055	1,025	1,015	1,065	1,095	995
ADRO	Negative	Trading	Positive	Hold	2,425	2,380	2,355	2,450	2,495	2,320
AKRA	Negative	Trading	Positive	Hold	1,215	1,200	1,185	1,230	1,245	1,165
AMMN	Negative	Trading	Negative	Sell	8,275	8,175	8,025	8,425	8,525	7,900
AMRT	Negative	Trading	Positive	Hold	2,810	2,745	2,680	2,875	2,940	2,635
ANTM	Negative	Trading	Positive	Hold	1,530	1,510	1,490	1,550	1,570	1,465
ARTO	Positive	Trading	Positive	Spec. Buy	2,560	2,515	2,480	2,595	2,640	2,440
ASII	Positive	Trading	Negative	Hold	4,955	4,880	4,810	5,025	5,100	4,735
BBCA	Positive	Trading	Positive	Spec. Buy	9,825	9,725	9,650	9,900	10,000	9,500
BBNI	Positive	Trading	Positive	Spec. Buy	4,545	4,490	4,425	4,610	4,665	4,360
BBRI	Positive	Trading	Negative	Hold	4,185	4,130	4,075	4,240	4,295	4,015
BBTN	Positive	Oversold	Negative	Spec. Buy	1,110	1,095	1,075	1,130	1,145	1,060
BMRI	Positive	Trading	Positive	Spec. Buy	6,000	5,800	5,650	6,150	6,350	5,575
BRIS	Negative	Trading	Positive	Hold	2,755	2,690	2,635	2,810	2,875	2,595
BRPT	Positive	Trading	Positive	Spec. Buy	960	930	915	975	1,005	900
BUKA	Positive	Trading	Negative	Hold	122	119	116	125	128	114
CPIN	Positive	Trading	Negative	Hold	4,585	4,495	4,445	4,635	4,725	4,375
ESSA	Negative	Trading	Positive	Hold	855	840	825	870	885	815
EXCL	Negative	Trading	Positive	Hold	2,270	2,260	2,240	2,290	2,300	2,205
GOTO	Negative	Overbought	Positive	Sell	81	80	79	82	83	78
ICBP	Positive	Oversold	Negative	Spec. Buy	10,875	10,725	10,600	11,000	11,150	10,450
INCO	Negative	Trading	Positive	Hold	3,605	3,580	3,555	3,630	3,655	3,500
INDF	Negative	Trading	Positive	Hold	7,675	7,525	7,450	7,750	7,900	7,325
INKP	Negative	Trading	Positive	Hold	6,625	6,500	6,425	6,700	6,825	6,325
INTP	Positive	Oversold	Negative	Spec. Buy	6,175	6,075	6,025	6,225	6,325	5,925
ISAT	Positive	Trading	Negative	Hold	2,365	2,345	2,325	2,385	2,405	2,290
ITMG	Negative	Trading	Negative	Sell	25,950	25,725	25,525	26,150	26,375	25,150
JSMR	Positive	Trading	Positive	Spec. Buy	4,290	4,215	4,160	4,345	4,420	4,095
KLBF	Positive	Oversold	Negative	Spec. Buy	1,250	1,235	1,220	1,265	1,280	1,200
MAPI	Positive	Trading	Positive	Spec. Buy	1,365	1,345	1,325	1,385	1,405	1,305
MBMA	Negative	Trading	Negative	Sell	430	420	410	440	450	404
MDKA	Negative	Trading	Positive	Hold	1,610	1,575	1,545	1,640	1,675	1,520
MEDC	Negative	Overbought	Positive	Sell	1,205	1,175	1,150	1,230	1,260	1,130
MTEL	Positive	Trading	Negative	Hold	665	660	650	675	680	640
PGAS	Negative	Trading	Positive	Hold	1,660	1,640	1,625	1,675	1,695	1,600
PGEO	Negative	Trading	Positive	Hold	930	920	905	945	955	890
PTBA	Negative	Trading	Positive	Hold	2,685	2,660	2,645	2,700	2,725	2,605
SIDO	Positive	Trading	Positive	Spec. Buy	595	585	585	595	605	575
SMGR	Positive	Oversold	Negative	Spec. Buy	2,885	2,830	2,795	2,920	2,975	2,755
SMRA	Positive	Oversold	Negative	Spec. Buy	468	459	452	475	484	445
TLKM	Negative	Trading	Negative	Sell	2,625	2,590	2,555	2,660	2,695	2,515
TOWR	Positive	Trading	Positive	Spec. Buy	685	675	655	705	715	645
UNTR	Negative	Trading	Positive	Hold	25,975	25,650	25,375	26,250	26,575	25,000
UNVR	Negative	Trading	Negative	Sell	1,770	1,745	1,725	1,790	1,815	1,695



Kiwoom Research Team



Sukarno Alatas

Head of Equity Research

sukarno@kiwoom.co.id | 021 5010 5800



Abdul Azis Setyo W.

Equity Research Analyst

azis@kiwoom.co.id | 021 5010 5800



Miftahul Khaer

Equity Research Analyst

khaer.miftahul@kiwoom.co.id | 021 5010 5800



HEAD OFFICE

Treasury Tower 27th Floor Unit A, District 8 Kawasan SCBD Lot 28,
Jl.Jend.Sudirman Kav 52-53, Jakarta Selatan 12190

Tel : (021) 5010 5800

Fax : (021) 5010 5820

Email : cs@kiwoom.co.id

PT Kiwoom Sekuritas Indonesia is licensed and supervised by the Financial Services Authority (OJK)

OTHER DISCLOSURES

All Kiwoom's research reports made available to clients are simultaneously available on our own website <http://www.kiwoom.co.id/>. Not all research content is redistributed, e-mailed or made available to third-party aggregators. For all research reports available on a particular stock, please contact your sales representative. Any data discrepancies in this report could be the result of different calculations and/or adjustments.

DISCLAIMER

This report has been prepared and issued by PT Kiwoom Sekuritas Indonesia. Information has been obtained from sources believed to be reliable but Kiwoom Securities do not warrant its completeness or accuracy. Forward-looking information or statements in this report contain information that is based on forecast of future results, estimates of amounts not yet determinable, assumptions, and therefore involve known and unknown risks and uncertainties which may cause the actual results, performance or achievements of their subject matter to be materially different from current expectations. To the fullest extent allowed by law, PT Kiwoom Sekuritas Indonesia shall not be liable for any direct, indirect or consequential losses, loss of profits, damages, costs or expenses incurred or suffered by any person or organization arising from reliance on or use of any information contained on this report. The information that we provide should not be construed in any manner whatsoever as, personalized advice. No mention of a particular security in this report constitutes a recommendation to buy, sell or hold that or any security, or that any particular security, portfolio of securities, transaction or investment strategy is suitable for any specific person. This report is being supplied to you solely for your information and may not be reproduced by, further distributed to or published in whole or in part by, any other person.