



JCI Range Today

6,966 – 6,986 (Support), 7,073 – 7,093 (Resistance)



Jakarta Composite Index closed lower and breakdown support. Indicator from stochastic is golden cross potential, MACD histogram is moving negative direction (line is death cross potential) and volume is increasing. Bearish scenario: If it moves bearish, JCI is expected to weaken to the support range 6,966 – 6,986. Bullish scenario: If JCI is able to move bullish, JCI has the opportunity strengthen to the resistance range 7,073 – 7,093.

Stock Pick Today:



BBRI



LSIP



MLPL

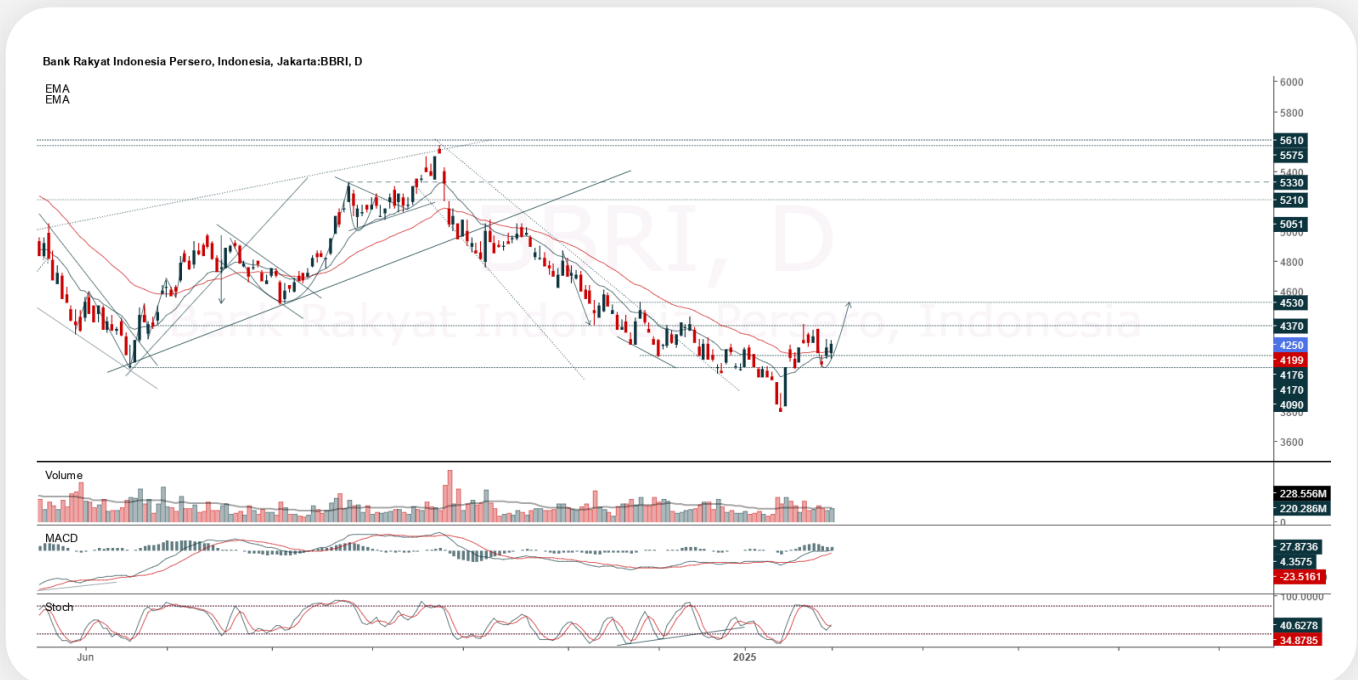


TPIA



BBRI

Bank Rakyat Indonesia (Persero) Tbk.



(BBRI). Price closed higher and breakup dynamic resistance at EMA 5. Price has the opportunity strengthen to the nearest resistance. Stochastic is golden cross, MACD histogram is moving positive (line is bullish) and volume is increasing. Confirm buy if the next candle returns bullish or buy on support if it goes down first. Be careful if you fail to stay above the support level or become a support breakdown. **(Trading Buy)**

TRADING STRATEGY:

Target Price:

The price has a bullish opportunity to test the resistance level 4,330. If it breaks level 4,330 then the price will go to level 4,400. We recommend to be careful if the price fails to break through or turn around the support area.

Stop Loss:

To minimize the risk of loss, we recommend placing a stop loss at level 4,120.

Entry Buy	: 4,170 – 4,250
Target Price	: 4,330 – 4,400
Support	: 4,130 – 4,170
Cut loss	: 4,120



LSIP

PP London Sumatra Indonesia Tbk.



(LSIP). Price closed higher and back to rally. Price has the opportunity strengthen to the nearest resistance. Stochastic is bullish, MACD histogram is moving positive (line is bullish) and volume is increasing. Confirm buy if the next candle returns bullish or buy on support if it goes down first. Be careful if you fail to stay above the support level or become a support breakdown. **(Trading Buy)**

TRADING STRATEGY:

Target Price:

The price has a bullish opportunity to test the resistance level 1,070. If it breaks level 1,070 then the price will go to level 1,090. We recommend to be careful if the price fails to break through or turn around the support area.

Stop Loss:

To minimize the risk of loss, we recommend placing a stop loss at level 1,020.

Entry Buy	: 1,030 – 1,050
Target Price	: 1,070 – 1,090
Support	: 1,025 – 1,030
Cut loss	: 1,020



MLPL

Multipolar Tbk.



(MLPL). Price closed higher and breakout resistance. Price has the opportunity strengthen to the next resistance. Stochastic is bullish, MACD histogram is moving positive (line is bullish) and volume is increasing. Confirm buy if the next candle returns bullish or buy on support if it goes down first. Be careful if you fail to stay above the support level or become a support breakdown. **(Trading Buy)**

TRADING STRATEGY:

Target Price:

The price has a bullish opportunity to test the resistance level 126. If it breaks level 126 then the price will go to level 128. We recommend to be careful if the price fails to break through or turn around the support area.

Stop Loss:

To minimize the risk of loss, we recommend placing a stop loss at level 119.

Entry Buy : 121 – 123

Target Price : 126 – 128

Support : 120 – 121

Cut loss : 119



TPIA

Chandra Asri Pacific Tbk.



(TPIA). Price closed higher and breakout resistance. Price has the opportunity strengthen to the next resistance. Stochastic is golden cross, MACD histogram is moving positive (line is bullish) and volume is decreasing. Confirm buy if the next candle returns bullish or buy on support if it goes down first. Be careful if you fail to stay above the support level or become a support breakdown. **(Trading Buy)**

TRADING STRATEGY:

Target Price:

The price has a bullish opportunity to test the resistance level 7,650. If it breaks level 7,650 then the price will go to level 7,775. We recommend to be careful if the price fails to break through or turn around the support area.

Stop Loss:

To minimize the risk of loss, we recommend placing a stop loss at level 7,275.

Entry Buy : 7,375 – 7,500
 Target Price : 7,650 – 7,775
 Support : 7,300 – 7,375
 Cut loss : 7,275



Forecast – Technical Analysis

Ticker	MA5	RSI Rec	MACD Trend	Recomm.	Pivot Point	Support 1	Support 2	Resistance 1	Resistance 2	Stop Loss Level
JCI	Positive	Trading	Positive	Spec. Buy	7,025	6,975	6,875	7,125	7,200	6,775
ACES	Positive	Trading	Positive	Spec. Buy	745	725	715	755	775	700
ADMN	Positive	Oversold	Positive	Buy	970	930	880	1,020	1,060	865
ADRO	Positive	Oversold	Positive	Buy	2,305	2,280	2,235	2,350	2,375	2,200
AKRA	Positive	Oversold	Negative	Spec. Buy	1,100	1,085	1,060	1,125	1,140	1,045
AMMN	Positive	Oversold	Negative	Spec. Buy	7,275	7,000	6,675	7,600	7,875	6,575
AMRT	Positive	Trading	Positive	Spec. Buy	2,865	2,845	2,805	2,905	2,925	2,760
ANTM	Positive	Oversold	Negative	Spec. Buy	1,385	1,365	1,335	1,415	1,435	1,315
ARTO	Positive	Oversold	Negative	Spec. Buy	2,230	2,190	2,150	2,270	2,310	2,120
ASII	Positive	Trading	Negative	Hold	4,775	4,750	4,715	4,810	4,835	4,645
BBCA	Positive	Trading	Negative	Hold	9,350	9,300	9,175	9,475	9,525	9,025
BBNI	Positive	Trading	Positive	Spec. Buy	4,750	4,695	4,590	4,855	4,910	4,520
BBRI	Positive	Trading	Positive	Spec. Buy	4,220	4,165	4,100	4,285	4,340	4,035
BBTN	Positive	Oversold	Negative	Spec. Buy	1,025	1,010	990	1,045	1,060	975
BMRI	Positive	Trading	Positive	Spec. Buy	5,875	5,750	5,575	6,050	6,175	5,475
BRIS	Negative	Overbought	Positive	Sell	2,910	2,875	2,830	2,955	2,990	2,785
BRPT	Positive	Trading	Negative	Hold	910	895	870	935	950	855
BUKA	Positive	Trading	Positive	Spec. Buy	4,665	4,645	4,605	4,705	4,725	4,535
CPIN	Negative	Trading	Positive	Hold	980	960	920	1,020	1,040	905
ESSA	Positive	Trading	Positive	Spec. Buy	830	805	775	860	885	760
EXCL	Negative	Trading	Positive	Hold	2,280	2,260	2,240	2,300	2,320	2,205
GOTO	Positive	Trading	Negative	Hold	80	79	77	82	83	76
ICBP	Negative	Trading	Positive	Hold	11,325	11,075	10,775	11,625	11,875	10,600
INCO	Positive	Oversold	Negative	Spec. Buy	2,920	2,820	2,710	3,030	3,130	2,670
INDF	Negative	Trading	Positive	Hold	7,725	7,575	7,400	7,900	8,050	7,275
INKP	Positive	Trading	Positive	Spec. Buy	6,725	6,650	6,500	6,875	6,950	6,400
INTP	Negative	Trading	Negative	Sell	2,270	2,225	2,170	2,325	2,370	2,135
ISAT	Positive	Trading	Positive	Spec. Buy	25,925	25,775	25,525	26,175	26,325	25,150
ITMG	Negative	Overbought	Positive	Sell	1,980	1,955	1,905	2,030	2,055	1,875
JSMR	Positive	Trading	Negative	Hold	4,150	4,070	3,960	4,260	4,340	3,900
KLBF	Positive	Trading	Positive	Spec. Buy	1,225	1,190	1,145	1,270	1,305	1,130
MAPI	Negative	Trading	Negative	Sell	960	930	905	985	1,015	890
MBMA	Positive	Oversold	Negative	Spec. Buy	1,290	1,265	1,250	1,305	1,330	1,230
MDKA	Positive	Oversold	Negative	Spec. Buy	382	371	360	393	404	354
MEDC	Positive	Trading	Positive	Spec. Buy	1,505	1,445	1,375	1,575	1,635	1,355
MTEL	Positive	Trading	Negative	Hold	1,070	1,060	1,035	1,095	1,105	1,020
PGAS	Negative	Trading	Negative	Sell	1,590	1,575	1,545	1,620	1,635	1,520
PGEO	Positive	Trading	Positive	Spec. Buy	940	910	890	960	990	875
PTBA	Positive	Trading	Positive	Spec. Buy	2,675	2,660	2,635	2,700	2,715	2,595
SIDO	Positive	Trading	Negative	Hold	575	565	550	590	600	540
SMGR	Positive	Oversold	Positive	Buy	2,775	2,735	2,675	2,835	2,875	2,630
SMRA	Positive	Oversold	Positive	Buy	453	445	435	463	471	428
TLKM	Positive	Trading	Positive	Spec. Buy	2,610	2,590	2,540	2,660	2,680	2,500
TOWR	Positive	Trading	Positive	Spec. Buy	630	620	605	645	655	595
UNTR	Positive	Trading	Negative	Hold	24,850	24,675	24,325	25,200	25,375	23,950
UNVR	Positive	Oversold	Negative	Spec. Buy	1,610	1,580	1,550	1,640	1,670	1,525



Kiwoom Research Team



Sukarno Alatas

Head of Equity Research

sukarno@kiwoom.co.id | 021 5010 5800



Abdul Azis Setyo W.

Equity Research Analyst

azis@kiwoom.co.id | 021 5010 5800



Miftahul Khaer

Equity Research Analyst

khaer.miftahul@kiwoom.co.id | 021 5010 5800



HEAD OFFICE

Treasury Tower 27th Floor Unit A, District 8 Kawasan SCBD Lot 28,
Jl.Jend.Sudirman Kav 52-53, Jakarta Selatan 12190

Tel : (021) 5010 5800

Fax : (021) 5010 5820

Email : cs@kiwoom.co.id

PT Kiwoom Sekuritas Indonesia is licensed and supervised by the Financial Services Authority (OJK)

OTHER DISCLOSURES

All Kiwoom's research reports made available to clients are simultaneously available on our own website <http://www.kiwoom.co.id/>. Not all research content is redistributed, e-mailed or made available to third-party aggregators. For all research reports available on a particular stock, please contact your sales representative. Any data discrepancies in this report could be the result of different calculations and/or adjustments.

DISCLAIMER

This report has been prepared and issued by PT Kiwoom Sekuritas Indonesia. Information has been obtained from sources believed to be reliable but Kiwoom Securities do not warrant its completeness or accuracy. Forward-looking information or statements in this report contain information that is based on forecast of future results, estimates of amounts not yet determinable, assumptions, and therefore involve known and unknown risks and uncertainties which may cause the actual results, performance or achievements of their subject matter to be materially different from current expectations. To the fullest extent allowed by law, PT Kiwoom Sekuritas Indonesia shall not be liable for any direct, indirect or consequential losses, loss of profits, damages, costs or expenses incurred or suffered by any person or organization arising from reliance on or use of any information contained on this report. The information that we provide should not be construed in any manner whatsoever as, personalized advice. No mention of a particular security in this report constitutes a recommendation to buy, sell or hold that or any security, or that any particular security, portfolio of securities, transaction or investment strategy is suitable for any specific person. This report is being supplied to you solely for your information and may not be reproduced by, further distributed to or published in whole or in part by, any other person.