



JCI Range Today

6,957 – 6,977 (Support), 7,064 – 7,084 (Resistance)



Jakarta Composite Index closed negative with bearish candle. Indicator from stochastic is bullish, MACD histogram is moving bearish (line is sloping) and volume is decreased slightly. Bearish scenario: If it moves bearish, JCI is expected to weaken to the support range 6,957 – 6,977. Bullish scenario: If JCI is able to move bullish, JCI has the opportunity strengthen to the resistance range 7,064 – 7,084.

Stock Pick Today:



AMRT



ANTM



EMTK



JPFA



AMRT

Sumber Alfaria Trijaya Tbk.



(AMRT). Price closed higher and breakout resistance. Price has the opportunity strengthen to the next resistance. Stochastic is still bullish, MACD histogram is moving positive (line is bullish) and volume is increasing. Confirm buy if the next candle returns bullish or buy on support if it goes down first. Be careful if you fail to stay above the support level or become a support breakdown. **(Trading Buy)**

TRADING STRATEGY:

Target Price:

The price has a bullish opportunity to test the resistance level 2,990. If it breaks level 2,990 then the price will go to level 3,040. We recommend to be careful if the price fails to break through or turn around the support area.

Stop Loss:

To minimize the risk of loss, we recommend placing a stop loss at level 2,850.

Entry Buy	: 2,880 – 2,930
Target Price	: 2,990 – 3,040
Support	: 2,860 – 2,880
Cut loss	: 2,850



ANTM

Aneka Tambang Tbk.



(ANTM). Price closed higher and breakout resistance. Price has the opportunity strengthen to the next resistance. Stochastic is bullish, MACD histogram is moving positive direction (line is golden cross potential) and volume is increasing. Confirm buy if the next candle returns bullish or buy on support if it goes down first. Be careful if you fail to stay above the support level or become a support breakdown. **(Trading Buy)**

TRADING STRATEGY:

Target Price:

The price has a bullish opportunity to test the resistance level 1,480. If it breaks level 1,480 then the price will go to level 1,510. We recommend to be careful if the price fails to break through or turn around the support area.

Stop Loss:

To minimize the risk of loss, we recommend placing a stop loss at level 1,405.

Entry Buy	: 1,420 – 1,450
Target Price	: 1,480 – 1,510
Support	: 1,410 – 1,420
Cut loss	: 1,405



EMTK

Elang Mahkota Teknologi Tbk.



(EMTK). Price closed higher and breakout resistance. Price has the opportunity strengthen to the next resistance. Stochastic is golden cross potential, MACD histogram is moving positive (line is bullish) and volume is increasing. Confirm buy if the next candle returns bullish or buy on support if it goes down first. Be careful if you fail to stay above the support level or become a support breakdown. **(Trading Buy)**

TRADING STRATEGY:

Target Price:

The price has a bullish opportunity to test the resistance level 585. If it breaks level 585 then the price will go to level 595. We recommend to be careful if the price fails to break through or turn around the support area.

Stop Loss:

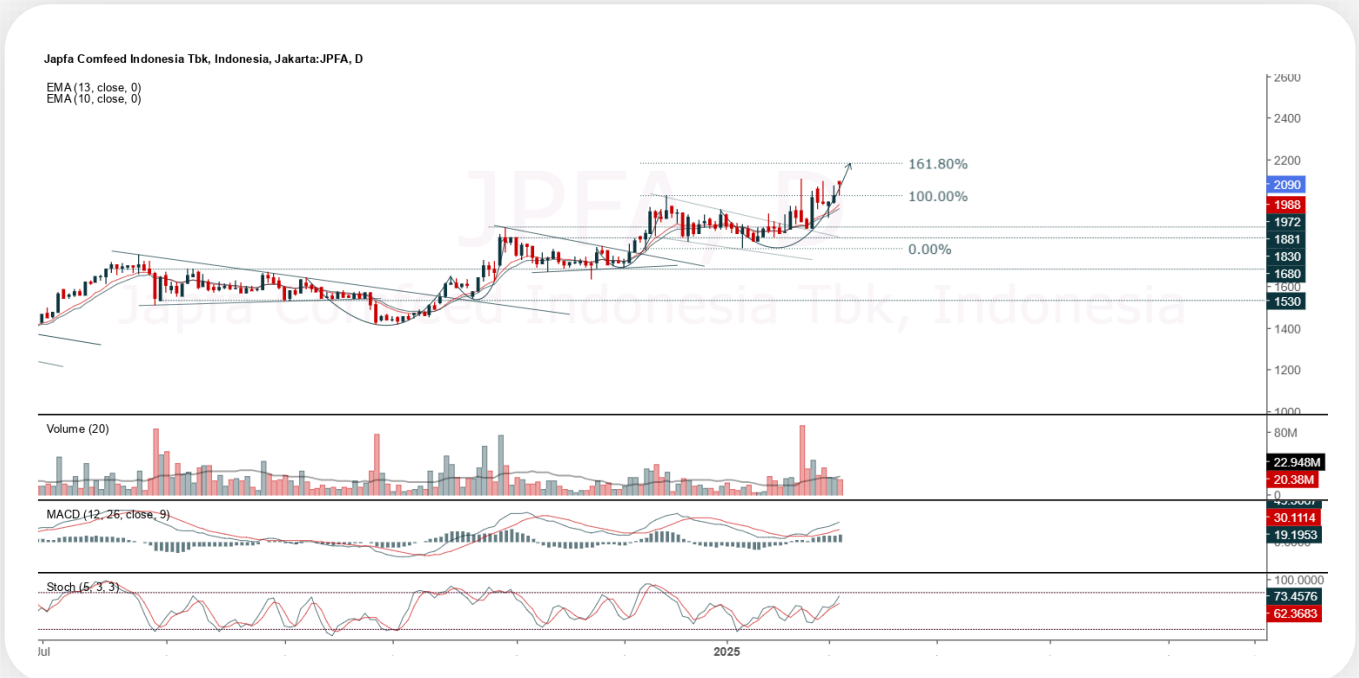
To minimize the risk of loss, we recommend placing a stop loss at level 550.

Entry Buy : 560 – 570
 Target Price : 585 – 595
 Support : 555 – 560
 Cut loss : 550



JPFA

Japfa Comfeed Indonesia Tbk.



(JPFA). Price closed negative with bearish candle. Price has the opportunity strengthen to the nearest resistance. Stochastic is still bullish, MACD histogram is moving positive (line is bullish) and volume is decreasing. Confirm buy if the next candle returns bullish or buy on support if it goes down first. Be careful if you fail to stay above the support level or become a support breakdown. **(Trading Buy)**

TRADING STRATEGY:

Target Price:

The price has a bullish opportunity to test the resistance level 2,130. If it breaks level 2,130 then the price will go to level 2,180. We recommend to be careful if the price fails to break through or turn around the support area.

Stop Loss:

To minimize the risk of loss, we recommend placing a stop loss at level 2,020.

Entry Buy	: 2,050 – 2,090
Target Price	: 2,130 – 2,180
Support	: 2,030 – 2,050
Cut loss	: 2,020



Forecast – Technical Analysis

Ticker	MA5	RSI Rec	MACD Trend	Recomm.	Pivot Point	Support 1	Support 2	Resistance 1	Resistance 2	Stop Loss Level
JCI	Positive	Trading	Negative	Hold	7,050	7,000	6,975	7,075	7,125	6,875
ACES	Positive	Trading	Positive	Spec. Buy	745	735	725	755	765	715
ADMN	Positive	Oversold	Negative	Spec. Buy	915	900	885	930	945	870
ADRO	Negative	Trading	Positive	Hold	2,365	2,340	2,295	2,410	2,435	2,260
AKRA	Positive	Oversold	Negative	Spec. Buy	1,135	1,120	1,090	1,165	1,180	1,075
AMMN	Positive	Oversold	Negative	Spec. Buy	7,125	6,950	6,775	7,300	7,475	6,650
AMRT	Negative	Trading	Positive	Hold	2,895	2,810	2,745	2,960	3,045	2,705
ANTM	Positive	Oversold	Negative	Spec. Buy	1,425	1,405	1,370	1,460	1,480	1,350
ARTO	Positive	Oversold	Negative	Spec. Buy	2,230	2,215	2,190	2,255	2,270	2,155
ASII	Positive	Trading	Negative	Hold	4,795	4,735	4,675	4,855	4,915	4,600
BBCA	Positive	Oversold	Negative	Spec. Buy	9,125	9,075	9,050	9,150	9,200	8,925
BBNI	Negative	Trading	Positive	Hold	4,580	4,475	4,380	4,675	4,780	4,310
BBRI	Negative	Trading	Positive	Hold	4,195	4,140	4,085	4,250	4,305	4,025
BBTN	Positive	Oversold	Negative	Spec. Buy	1,000	990	980	1,010	1,020	965
BMRI	Positive	Trading	Positive	Spec. Buy	5,550	5,500	5,425	5,625	5,675	5,350
BRIS	Negative	Overbought	Positive	Sell	2,960	2,935	2,900	2,995	3,020	2,855
BRPT	Negative	Trading	Negative	Sell	950	920	895	975	1,005	880
CPIN	Positive	Trading	Positive	Spec. Buy	4,695	4,655	4,615	4,735	4,775	4,545
CTRA	Positive	Trading	Positive	Spec. Buy	950	925	905	970	995	890
ESSA	Positive	Trading	Negative	Hold	820	810	800	830	840	785
EXCL	Positive	Trading	Positive	Spec. Buy	2,280	2,265	2,250	2,295	2,310	2,215
GOTO	Positive	Overbought	Negative	Sell	85	82	79	88	91	77
ICBP	Positive	Trading	Positive	Spec. Buy	11,000	10,825	10,625	11,200	11,375	10,475
INCO	Positive	Strong Buy	Negative	Buy	2,845	2,805	2,765	2,885	2,925	2,720
INDF	Negative	Trading	Positive	Hold	7,575	7,425	7,325	7,675	7,825	7,200
INKP	Positive	Trading	Positive	Spec. Buy	6,500	6,400	6,325	6,575	6,675	6,225
ISAT	Positive	Oversold	Negative	Spec. Buy	2,240	2,215	2,180	2,275	2,300	2,145
ITMG	Positive	Trading	Positive	Spec. Buy	26,225	25,950	25,575	26,600	26,875	25,200
JPFA	Negative	Overbought	Positive	Sell	2,080	2,060	2,010	2,130	2,150	1,980
JSMR	Positive	Oversold	Negative	Spec. Buy	4,155	4,140	4,095	4,200	4,215	4,035
KLBF	Negative	Trading	Positive	Hold	1,225	1,205	1,185	1,245	1,265	1,170
MAPA	Positive	Trading	Negative	Hold	920	900	860	960	980	850
MAPI	Positive	Oversold	Negative	Spec. Buy	1,215	1,170	1,110	1,275	1,320	1,095
MBMA	Positive	Oversold	Negative	Spec. Buy	384	378	374	388	394	368
MDKA	Positive	Oversold	Positive	Buy	1,500	1,460	1,435	1,525	1,565	1,415
MEDC	Positive	Oversold	Negative	Spec. Buy	1,055	1,045	1,020	1,080	1,090	1,005
PGAS	Positive	Trading	Negative	Hold	1,625	1,615	1,595	1,645	1,655	1,570
PGEO	Positive	Trading	Negative	Hold	930	905	890	945	970	875
PTBA	Positive	Trading	Positive	Spec. Buy	2,705	2,670	2,645	2,730	2,765	2,605
SIDO	Negative	Trading	Negative	Sell	575	565	560	580	590	550
SMGR	Positive	Trading	Positive	Spec. Buy	2,875	2,820	2,785	2,910	2,965	2,745
SMRA	Positive	Oversold	Positive	Buy	441	434	427	448	455	421
TLKM	Positive	Trading	Positive	Spec. Buy	2,615	2,585	2,565	2,635	2,665	2,525
TOWR	Positive	Oversold	Negative	Spec. Buy	625	620	605	640	645	595
UNTR	Positive	Trading	Negative	Hold	25,250	25,000	24,600	25,650	25,900	24,225
UNVR	Positive	Oversold	Negative	Spec. Buy	1,565	1,555	1,540	1,580	1,590	1,515



Kiwoom Research Team



Sukarno Alatas

Head of Equity Research

sukarno@kiwoom.co.id | 021 5010 5800



Abdul Azis Setyo W.

Equity Research Analyst

azis@kiwoom.co.id | 021 5010 5800



Miftahul Khaer

Equity Research Analyst

khaer.miftahul@kiwoom.co.id | 021 5010 5800



HEAD OFFICE

Treasury Tower 27th Floor Unit A, District 8 Kawasan SCBD Lot 28,
Jl.Jend.Sudirman Kav 52-53, Jakarta Selatan 12190

Tel : (021) 5010 5800

Fax : (021) 5010 5820

Email : cs@kiwoom.co.id

PT Kiwoom Sekuritas Indonesia is licensed and supervised by the Financial Services Authority (OJK)

OTHER DISCLOSURES

All Kiwoom's research reports made available to clients are simultaneously available on our own website <http://www.kiwoom.co.id/>. Not all research content is redistributed, e-mailed or made available to third-party aggregators. For all research reports available on a particular stock, please contact your sales representative. Any data discrepancies in this report could be the result of different calculations and/or adjustments.

DISCLAIMER

This report has been prepared and issued by PT Kiwoom Sekuritas Indonesia. Information has been obtained from sources believed to be reliable but Kiwoom Securities do not warrant its completeness or accuracy. Forward-looking information or statements in this report contain information that is based on forecast of future results, estimates of amounts not yet determinable, assumptions, and therefore involve known and unknown risks and uncertainties which may cause the actual results, performance or achievements of their subject matter to be materially different from current expectations. To the fullest extent allowed by law, PT Kiwoom Sekuritas Indonesia shall not be liable for any direct, indirect or consequential losses, loss of profits, damages, costs or expenses incurred or suffered by any person or organization arising from reliance on or use of any information contained on this report. The information that we provide should not be construed in any manner whatsoever as, personalized advice. No mention of a particular security in this report constitutes a recommendation to buy, sell or hold that or any security, or that any particular security, portfolio of securities, transaction or investment strategy is suitable for any specific person. This report is being supplied to you solely for your information and may not be reproduced by, further distributed to or published in whole or in part by, any other person.