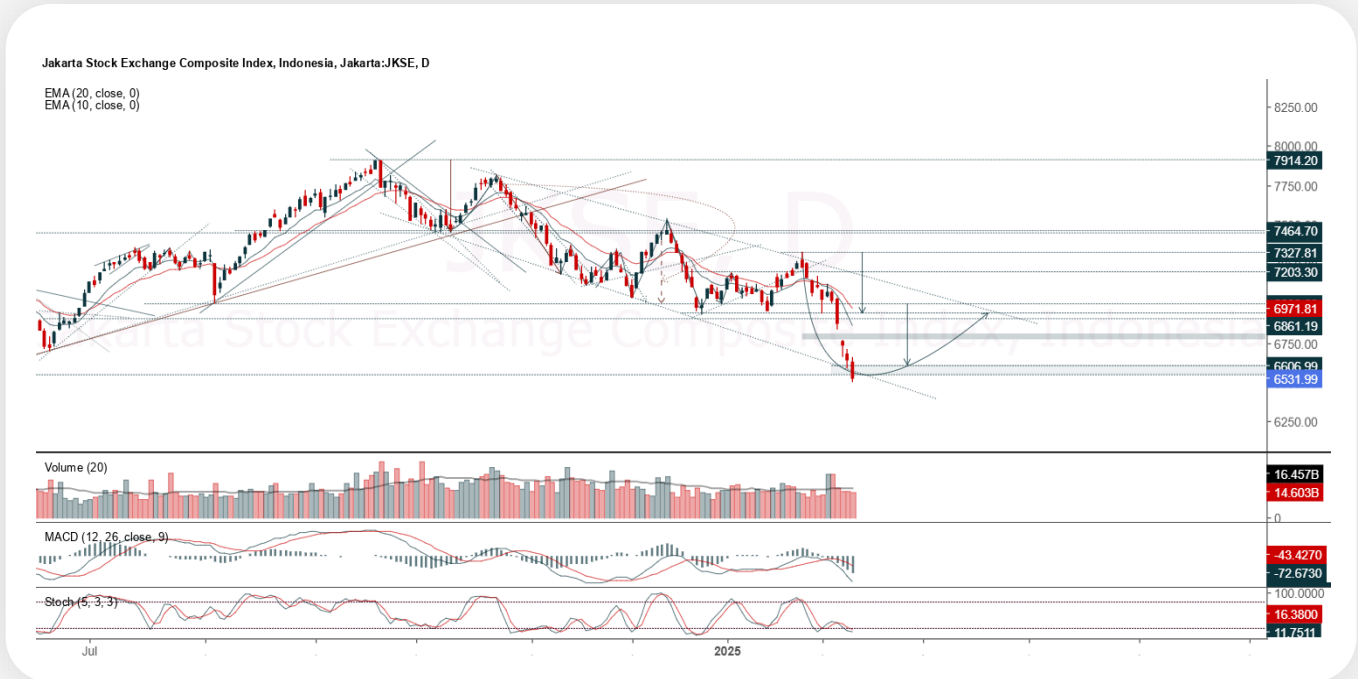




## JCI Range Today

**6,460 – 6,480 (Support), 6,565 – 6,585 (Resistance)**



**Jakarta Composite Index** closed lower and breakdown support. Indicator from stochastic is still bearish, MACD histogram is moving bearish (line is sloping) and volume is decreasing. Bearish scenario: If it moves bearish, JCI is expected to weaken to the support range 6,460 – 6,480. Bullish scenario: If JCI is able to move bullish, JCI has the opportunity strengthen to the resistance range 6,565 – 6,585.

## Stock Pick Today:



**ACES**



**BBRI**



**MBMA**



**PGAS**



## ACES

Aspirasi Hidup Indonesia Tbk.



**(ACES).** Price closed higher and back to rally. Price has the opportunity strengthen to the nearest resistance. Stochastic is still bullish, MACD histogram is moving positive (line is bullish) and volume is decreasing. Confirm buy if the next candle returns bullish or buy on support if it goes down first. Be careful if you fail to stay above the support level or become a support breakdown. **(Trading Buy)**

### **TRADING STRATEGY:**

#### **Target Price:**

The price has a bullish opportunity to test the resistance level 770. If it breaks level 770 then the price will go to level 785. We recommend to be careful if the price fails to break through or turn around the support area.

#### **Stop Loss:**

To minimize the risk of loss, we recommend placing a stop loss at level 735.

- Entry Buy : 745 – 755
- Target Price : 770 – 785
- Support : 740 – 745
- Cut loss : 735



## BBRI

Bank Rakyat Indonesia (Persero) Tbk.



**(BBRI).** Price closed higher and back to rally. Price has the opportunity strengthen to the nearest resistance. Stochastic is golden cross, MACD histogram is moving bearish (line is sloping) and volume is increasing. Confirm buy if the next candle returns bullish or buy on support if it goes down first. Be careful if you fail to stay above the support level or become a support breakdown. **(Trading Buy)**

### **TRADING STRATEGY:**

#### **Target Price:**

The price has a bullish opportunity to test the resistance level 4,080. If it breaks level 4,080 then the price will go to level 4,150. We recommend to be careful if the price fails to break through or turn around the support area.

#### **Stop Loss:**

To minimize the risk of loss, we recommend placing a stop loss at level 3,890.

Entry Buy	: 3,940 – 4,010
Target Price	: 4,080 – 4,150
Support	: 3,900 – 3,940
Cut loss	: 3,890



## MBMA

Merdeka Battery Materials Tbk.



**(MBMA).** Price closed higher and breakout resistance. Price has the opportunity strengthen to the next resistance. Stochastic is still bullish, MACD histogram is moving positive (line is golden cross) and volume is increasing. Confirm buy if the next candle returns bullish or buy on support if it goes down first. Be careful if you fail to stay above the support level or become a support breakdown. **(Trading Buy)**

### **TRADING STRATEGY:**

#### **Target Price:**

The price has a bullish opportunity to test the resistance level 394. If it breaks level 394 then the price will go to level 400. We recommend to be careful if the price fails to break through or turn around the support area.

#### **Stop Loss:**

To minimize the risk of loss, we recommend placing a stop loss at level 374.

- Entry Buy : 380 – 386
- Target Price : 394 – 400
- Support : 376 – 380
- Cut loss : 374



## PGAS

Perusahaan Gas Negara Tbk.



**(PGAS).** Price closed back to rally. Price has the opportunity strengthen to the nearest resistance. Stochastic is golden cross, MACD histogram is moving positive direction (line is golden cross potential) and volume is increasing. Confirm buy if the next candle returns bullish or buy on support if it goes down first. Be careful if you fail to stay above the support level or become a support breakdown. **(Trading Buy)**

### **TRADING STRATEGY:**

#### **Target Price:**

The price has a bullish opportunity to test the resistance level 1,660. If it breaks level 1,660 then the price will go to level 1,690. We recommend to be careful if the price fails to break through or turn around the support area.

#### **Stop Loss:**

To minimize the risk of loss, we recommend placing a stop loss at level 1,585.

Entry Buy	: 1,600 – 1,630
Target Price	: 1,660 – 1,690
Support	: 1,590 – 1,600
Cut loss	: 1,585



## Forecast – Technical Analysis

Ticker	MA5	RSI Rec	MACD Trend	Recomm.	Pivot Point	Support 1	Support 2	Resistance 1	Resistance 2	Stop Loss Level
JCI	Positive	Oversold	Negative	Spec. Buy	6,575	6,500	6,425	6,650	6,750	6,325
ACES	Negative	Trading	Positive	Hold	750	740	730	760	770	720
ADMR	Positive	Strong Buy	Negative	Buy	830	800	770	860	890	755
ADRO	Positive	Oversold	Positive	Buy	2,175	2,130	2,075	2,230	2,275	2,045
AKRA	Negative	Oversold	Negative	Spec. Buy	1,105	1,090	1,075	1,120	1,135	1,060
AMMN	Negative	Oversold	Negative	Spec. Buy	6,950	6,575	6,125	7,400	7,775	6,025
AMRT	Negative	Trading	Positive	Hold	3,020	2,955	2,910	3,065	3,130	2,865
ANTM	Negative	Trading	Negative	Sell	1,400	1,385	1,360	1,425	1,440	1,340
ARTO	Positive	Oversold	Negative	Spec. Buy	1,930	1,825	1,710	2,045	2,150	1,685
ASII	Positive	Oversold	Negative	Spec. Buy	4,605	4,560	4,525	4,640	4,685	4,455
BBCA	Positive	Trading	Negative	Hold	9,050	9,000	8,950	9,100	9,150	8,825
BBNI	Positive	Oversold	Negative	Spec. Buy	4,110	4,050	3,990	4,170	4,230	3,930
BBRI	Positive	Trading	Negative	Hold	3,980	3,920	3,840	4,060	4,120	3,780
BBTN	Positive	Oversold	Negative	Spec. Buy	930	905	880	955	980	865
BMRI	Positive	Oversold	Negative	Spec. Buy	4,835	4,715	4,635	4,915	5,025	4,565
BRIS	Negative	Overbought	Positive	Sell	3,030	2,970	2,920	3,080	3,140	2,875
BRPT	Positive	Oversold	Negative	Spec. Buy	810	790	765	835	855	755
CPIN	Positive	Trading	Negative	Hold	4,565	4,515	4,465	4,615	4,665	4,395
CTRA	Positive	Oversold	Negative	Spec. Buy	870	855	830	895	910	820
ESSA	Positive	Trading	Negative	Hold	815	805	795	825	835	785
EXCL	Positive	Trading	Positive	Spec. Buy	2,280	2,260	2,240	2,300	2,320	2,205
GOTO	Positive	Trading	Negative	Hold	82	81	79	84	85	78
ICBP	Negative	Trading	Positive	Hold	11,200	11,050	10,825	11,425	11,575	10,675
INCO	Negative	Oversold	Negative	Spec. Buy	2,780	2,690	2,620	2,850	2,940	2,580
INDF	Positive	Trading	Positive	Spec. Buy	7,725	7,675	7,575	7,825	7,875	7,475
INKP	Positive	Oversold	Negative	Spec. Buy	6,100	5,975	5,900	6,175	6,300	5,800
ISAT	Positive	Oversold	Negative	Spec. Buy	1,760	1,605	1,420	1,945	2,100	1,400
ITMG	Positive	Oversold	Negative	Spec. Buy	25,175	25,000	24,900	25,275	25,450	24,525
JPFA	Negative	Overbought	Positive	Sell	2,080	2,025	1,950	2,155	2,210	1,920
JSMR	Positive	Oversold	Negative	Spec. Buy	3,975	3,885	3,785	4,075	4,165	3,725
KLBF	Negative	Trading	Positive	Hold	1,285	1,250	1,210	1,325	1,360	1,195
MAPA	Positive	Oversold	Negative	Spec. Buy	855	825	780	900	930	770
MAPI	Negative	Trading	Negative	Sell	1,285	1,260	1,230	1,315	1,340	1,210
MBMA	Positive	Oversold	Negative	Spec. Buy	380	370	358	392	402	353
MDKA	Positive	Trading	Negative	Hold	1,495	1,430	1,385	1,540	1,605	1,365
MEDC	Positive	Trading	Negative	Hold	1,055	1,045	1,035	1,065	1,075	1,015
PGAS	Negative	Trading	Negative	Sell	1,625	1,595	1,575	1,645	1,675	1,550
PGEO	Positive	Oversold	Negative	Spec. Buy	850	820	795	875	905	780
PTBA	Positive	Trading	Negative	Hold	2,620	2,600	2,580	2,640	2,660	2,540
SIDO	Positive	Oversold	Negative	Spec. Buy	555	550	545	560	565	535
SMGR	Positive	Oversold	Negative	Spec. Buy	2,615	2,580	2,535	2,660	2,695	2,495
SMRA	Positive	Oversold	Negative	Spec. Buy	412	406	400	418	424	394
TLKM	Positive	Oversold	Negative	Spec. Buy	2,375	2,300	2,225	2,450	2,525	2,190
TOWR	Positive	Oversold	Negative	Spec. Buy	605	590	570	625	640	560
UNTR	Positive	Oversold	Negative	Spec. Buy	24,300	24,100	23,875	24,525	24,725	23,500
UNVR	Positive	Oversold	Negative	Spec. Buy	1,475	1,425	1,370	1,530	1,580	1,350



## Kiwoom Research Team



### Sukarno Alatas

Head of Equity Research

[sukarno@kiwoom.co.id](mailto:sukarno@kiwoom.co.id) | 021 5010 5800



### Abdul Azis Setyo W.

Equity Research Analyst

[azis@kiwoom.co.id](mailto:azis@kiwoom.co.id) | 021 5010 5800



### Miftahul Khaer

Equity Research Analyst

[khaer.miftahul@kiwoom.co.id](mailto:khaer.miftahul@kiwoom.co.id) | 021 5010 5800



### HEAD OFFICE

Treasury Tower 27th Floor Unit A, District 8 Kawasan SCBD Lot 28,  
Jl.Jend.Sudirman Kav 52-53, Jakarta Selatan 12190

Tel : (021) 5010 5800

Fax : (021) 5010 5820

Email : [cs@kiwoom.co.id](mailto:cs@kiwoom.co.id)

PT Kiwoom Sekuritas Indonesia is licensed and supervised by the Financial Services Authority (OJK)

### OTHER DISCLOSURES

All Kiwoom's research reports made available to clients are simultaneously available on our own website <http://www.kiwoom.co.id/>. Not all research content is redistributed, e-mailed or made available to third-party aggregators. For all research reports available on a particular stock, please contact your sales representative. Any data discrepancies in this report could be the result of different calculations and/or adjustments.

### DISCLAIMER

This report has been prepared and issued by PT Kiwoom Sekuritas Indonesia. Information has been obtained from sources believed to be reliable but Kiwoom Securities do not warrant its completeness or accuracy. Forward-looking information or statements in this report contain information that is based on forecast of future results, estimates of amounts not yet determinable, assumptions, and therefore involve known and unknown risks and uncertainties which may cause the actual results, performance or achievements of their subject matter to be materially different from current expectations. To the fullest extent allowed by law, PT Kiwoom Sekuritas Indonesia shall not be liable for any direct, indirect or consequential losses, loss of profits, damages, costs or expenses incurred or suffered by any person or organization arising from reliance on or use of any information contained on this report. The information that we provide should not be construed in any manner whatsoever as, personalized advice. No mention of a particular security in this report constitutes a recommendation to buy, sell or hold that or any security, or that any particular security, portfolio of securities, transaction or investment strategy is suitable for any specific person. This report is being supplied to you solely for your information and may not be reproduced by, further distributed to or published in whole or in part by, any other person.