



JCI Range Today 6,570 – 6,585 (Support), 6,698 – 6,713 (Resistance)



Jakarta Composite Index closed higher and breakout resistance. Indicator from stochastic is golden cross, MACD histogram is moving bearish (line is sloping) and volume is decreasing. Bearish scenario: If it moves bearish, JCI is expected to weaken to the support range 6,570 – 6,585. Bullish scenario: If JCI is able to move bullish, JCI has the opportunity strengthen to the resistance range 6,698 – 6,713.

Stock Pick Today:



EMTK



INDF



PSAB



TPIA



EMTK

Elang Mahkota Teknologi Tbk.



(EMTK). Price closed higher and breakout resistance. Price has the opportunity strengthen to the next resistance. Stochastic is still bearish, MACD histogram is moving positive (line is bullish) and volume is increasing. Confirm buy if the next candle returns bullish or buy on support if it goes down first. Be careful if you fail to stay above the support level or become a support breakdown. **(Trading Buy)**

TRADING STRATEGY:

Target Price:

The price has a bullish opportunity to test the resistance level 615. If it breaks level 615 then the price will go to level 625. We recommend to be careful if the price fails to break through or turn around the support area.

Stop Loss:

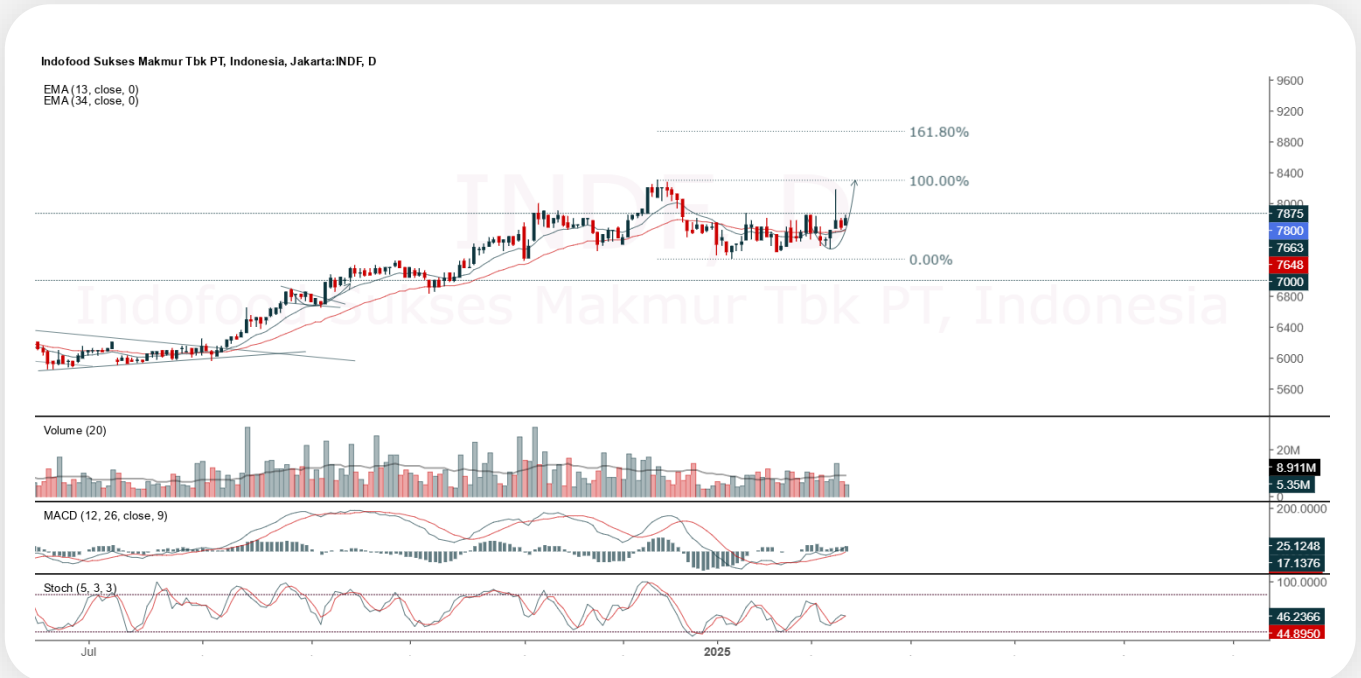
To minimize the risk of loss, we recommend placing a stop loss at level 580.

- Entry Buy : 590 – 600
- Target Price : 615 – 625
- Support : 585 – 590
- Cut loss : 580



INDF

Indofood Sukses Makmur Tbk.



(INDF). Price closed higher and back to rally. Price has the opportunity strengthen to the nearest resistance. Stochastic is death cross potential, MACD histogram is moving positive (line is bullish) and volume is decreasing. Confirm buy if the next candle returns bullish or buy on support if it goes down first. Be careful if you fail to stay above the support level or become a support breakdown. **(Trading Buy)**

TRADING STRATEGY:

Target Price:

The price has a bullish opportunity to test the resistance level 7,950. If it breaks level 7,950 then the price will go to level 8,075. We recommend to be careful if the price fails to break through or turn around the support area.

Stop Loss:

To minimize the risk of loss, we recommend placing a stop loss at level 7,575.

Entry Buy : 7,650 – 7,800
Target Price : 7,950 – 8,075
Support : 7,600 – 7,650
Cut loss : 7,575



PSAB

J Resources Asia Pasifik Tbk.



(PSAB). Price closed higher with bullish candle. Price has the opportunity strengthen to the nearest resistance. Stochastic is golden cross, MACD histogram is moving positive (line is bullish) and volume is increasing. Confirm buy if the next candle returns bullish or buy on support if it goes down first. Be careful if you fail to stay above the support level or become a support breakdown. **(Trading Buy)**

TRADING STRATEGY:

Target Price:

The price has a bullish opportunity to test the resistance level 284. If it breaks level 284 then the price will go to level 290. We recommend to be careful if the price fails to break through or turn around the support area.

Stop Loss:

To minimize the risk of loss, we recommend placing a stop loss at level 268.

Entry Buy	: 272 – 278
Target Price	: 284 – 290
Support	: 270 – 272
Cut loss	: 268



TPIA

Chandra Asri Pacific Tbk.



(TPIA). Price closed higher and breakout resistance. Price has the opportunity strengthen to the next resistance. Stochastic is golden cross, MACD histogram is moving positive direction (line is golden cross potential) and volume is increasing. Confirm buy if the next candle returns bullish or buy on support if it goes down first. Be careful if you fail to stay above the support level or become a support breakdown.
(Trading Buy)

TRADING STRATEGY:

Target Price:

The price has a bullish opportunity to test the resistance level 7,550. If it breaks level 7,550 then the price will go to level 7,675. We recommend to be careful if the price fails to break through or turn around the support area.

Stop Loss:

To minimize the risk of loss, we recommend placing a stop loss at level 7,175.

Entry Buy : 7,250 – 7,400
Target Price : 7,550 – 7,675
Support : 7,200 – 7,250
Cut loss : 7,175



Forecast – Technical Analysis

Ticker	MA5	RSI Rec	MACD Trend	Recomm.	Pivot Point	Support 1	Support 2	Resistance 1	Resistance 2	Stop Loss Level
JCI	Positive	Oversold	Negative	Spec. Buy	6,600	6,550	6,475	6,650	6,700	6,375
ACES	Negative	Trading	Positive	Hold	765	745	730	780	800	720
ADMR	Positive	Strong Buy	Negative	Buy	820	790	770	840	870	755
ADRO	Positive	Oversold	Positive	Buy	2,200	2,135	2,080	2,255	2,320	2,045
AKRA	Positive	Oversold	Negative	Spec. Buy	1,105	1,100	1,090	1,115	1,120	1,070
AMMN	Positive	Oversold	Negative	Spec. Buy	6,950	6,725	6,425	7,250	7,475	6,325
AMRT	Negative	Overbought	Positive	Sell	3,030	2,995	2,960	3,065	3,100	2,915
ANTM	Positive	Trading	Negative	Hold	1,395	1,390	1,370	1,415	1,420	1,350
ARTO	Positive	Strong Buy	Negative	Buy	1,855	1,805	1,760	1,900	1,950	1,735
ASII	Positive	Oversold	Negative	Spec. Buy	4,655	4,630	4,595	4,690	4,715	4,525
BBCA	Negative	Trading	Negative	Sell	9,050	8,950	8,850	9,150	9,250	8,725
BBNI	Positive	Oversold	Negative	Spec. Buy	4,210	4,115	4,010	4,315	4,410	3,945
BBRI	Positive	Trading	Negative	Hold	4,000	3,940	3,890	4,050	4,110	3,830
BBTN	Positive	Oversold	Negative	Spec. Buy	925	910	895	940	955	880
BMRI	Positive	Oversold	Negative	Spec. Buy	4,910	4,870	4,790	4,990	5,025	4,720
BRIS	Negative	Trading	Positive	Hold	2,985	2,965	2,915	3,035	3,055	2,870
BRPT	Positive	Oversold	Negative	Spec. Buy	815	805	795	825	835	785
CPIN	Positive	Trading	Negative	Hold	4,575	4,535	4,505	4,605	4,645	4,435
CTRA	Positive	Oversold	Negative	Spec. Buy	870	855	845	880	895	830
ESSA	Negative	Trading	Negative	Sell	815	810	795	830	835	785
EXCL	Negative	Trading	Negative	Sell	2,280	2,265	2,260	2,285	2,300	2,225
GOTO	Positive	Trading	Negative	Hold	82	81	80	83	84	79
ICBP	Negative	Trading	Positive	Hold	11,150	11,075	10,950	11,275	11,350	10,775
INCO	Positive	Oversold	Negative	Spec. Buy	2,725	2,670	2,645	2,750	2,805	2,605
INDF	Negative	Trading	Positive	Hold	7,775	7,700	7,650	7,825	7,900	7,525
INKP	Positive	Oversold	Negative	Spec. Buy	5,950	5,800	5,700	6,050	6,200	5,600
ISAT	Positive	Strong Buy	Negative	Buy	1,685	1,615	1,535	1,765	1,835	1,515
ITMG	Positive	Oversold	Negative	Spec. Buy	25,450	25,200	24,775	25,875	26,125	24,400
JPFA	Positive	Overbought	Positive	Hold	2,065	2,030	2,015	2,080	2,115	1,985
JSMR	Positive	Oversold	Negative	Spec. Buy	4,015	3,845	3,735	4,125	4,295	3,675
KLBF	Negative	Trading	Positive	Hold	1,270	1,255	1,235	1,290	1,305	1,220
MAPA	Positive	Oversold	Negative	Spec. Buy	840	820	800	860	880	790
MAPI	Negative	Trading	Negative	Sell	1,280	1,250	1,225	1,305	1,335	1,205
MBMA	Positive	Oversold	Positive	Buy	388	380	372	396	404	366
MDKA	Positive	Oversold	Negative	Spec. Buy	1,480	1,445	1,405	1,520	1,555	1,380
MEDC	Positive	Trading	Negative	Hold	1,050	1,035	1,025	1,060	1,075	1,010
PGAS	Positive	Trading	Negative	Hold	1,640	1,625	1,610	1,655	1,670	1,585
PGEO	Positive	Oversold	Negative	Spec. Buy	840	830	815	855	865	800
PTBA	Positive	Trading	Negative	Hold	2,625	2,605	2,575	2,655	2,675	2,535
SIDO	Positive	Oversold	Negative	Spec. Buy	570	545	530	585	610	520
SMGR	Positive	Oversold	Negative	Spec. Buy	2,575	2,515	2,465	2,625	2,685	2,425
SMRA	Positive	Oversold	Negative	Spec. Buy	410	404	398	416	422	392
TLKM	Positive	Oversold	Negative	Spec. Buy	2,420	2,355	2,290	2,485	2,550	2,255
TOWR	Positive	Oversold	Negative	Spec. Buy	600	595	580	615	620	575
UNTR	Positive	Trading	Negative	Hold	24,675	24,250	23,850	25,075	25,500	23,500
UNVR	Positive	Oversold	Negative	Spec. Buy	1,405	1,365	1,330	1,440	1,480	1,310



Kiwoom Research Team



Sukarno Alatas

Head of Equity Research

sukarno@kiwoom.co.id | 021 5010 5800



Abdul Azis Setyo W.

Equity Research Analyst

azis@kiwoom.co.id | 021 5010 5800



Miftahul Khaer

Equity Research Analyst

khaer.miftahul@kiwoom.co.id | 021 5010 5800



HEAD OFFICE

Treasury Tower 27th Floor Unit A, District 8 Kawasan SCBD Lot 28,
Jl.Jend.Sudirman Kav 52-53, Jakarta Selatan 12190

Tel : (021) 5010 5800

Fax : (021) 5010 5820

Email : cs@kiwoom.co.id

PT Kiwoom Sekuritas Indonesia is licensed and supervised by the Financial Services Authority (OJK)

OTHER DISCLOSURES

All Kiwoom's research reports made available to clients are simultaneously available on our own website <http://www.kiwoom.co.id/>. Not all research content is redistributed, e-mailed or made available to third-party aggregators. For all research reports available on a particular stock, please contact your sales representative. Any data discrepancies in this report could be the result of different calculations and/or adjustments.

DISCLAIMER

This report has been prepared and issued by PT Kiwoom Sekuritas Indonesia. Information has been obtained from sources believed to be reliable but Kiwoom Securities do not warrant its completeness or accuracy. Forward-looking information or statements in this report contain information that is based on forecast of future results, estimates of amounts not yet determinable, assumptions, and therefore involve known and unknown risks and uncertainties which may cause the actual results, performance or achievements of their subject matter to be materially different from current expectations. To the fullest extent allowed by law, PT Kiwoom Sekuritas Indonesia shall not be liable for any direct, indirect or consequential losses, loss of profits, damages, costs or expenses incurred or suffered by any person or organization arising from reliance on or use of any information contained on this report. The information that we provide should not be construed in any manner whatsoever as, personalized advice. No mention of a particular security in this report constitutes a recommendation to buy, sell or hold that or any security, or that any particular security, portfolio of securities, transaction or investment strategy is suitable for any specific person. This report is being supplied to you solely for your information and may not be reproduced by, further distributed to or published in whole or in part by, any other person.