



JCI Range Today

6,565 – 6,585 (Support), 6,648 – 6,668 (Resistance)



Jakarta Composite Index closed negative with bearish candle. Indicator from stochastic is bullish, MACD histogram is moving bearish (line is sloping) and volume is decreasing. Bearish scenario: If it moves bearish, JCI is expected to weaken to the support range 6,565 – 6,585. Bullish scenario: If JCI is able to move bullish, JCI has the opportunity strengthen to the resistance range 6,648 – 6,668.

Stock Pick Today:



ACES



ANTM



CLEO



JPFA



ACES

Aspirasi Hidup Indonesia Tbk.



(ACES). Price closed higher and breakout resistance. Price has the opportunity strengthen to the next resistance. Stochastic is still bullish, MACD histogram is moving positive (line is bullish) and volume is increasing. Confirm buy if the next candle returns bullish or buy on support if it goes down first. Be careful if you fail to stay above the support level or become a support breakdown. **(Trading Buy)**

TRADING STRATEGY:

Target Price:

The price has a bullish opportunity to test the resistance level 815. If it breaks level 815 then the price will go to level 830. We recommend to be careful if the price fails to break through or turn around the support area.

Stop Loss:

To minimize the risk of loss, we recommend placing a stop loss at level 775.

Entry Buy	: 785 – 800
Target Price	: 815 – 830
Support	: 780 – 785
Cut loss	: 775



ANTM

Aneka Tambang Tbk.



(ANTM). Price closed higher and breakout resistance. Price has the opportunity strengthen to the next resistance. Stochastic is golden cross, MACD histogram is moving positive (line is golden cross) and volume is increasing. Confirm buy if the next candle returns bullish or buy on support if it goes down first. Be careful if you fail to stay above the support level or become a support breakdown. **(Trading Buy)**

TRADING STRATEGY:

Target Price:

The price has a bullish opportunity to test the resistance level 1,500. If it breaks level 1,500 then the price will go to level 1,525. We recommend to be careful if the price fails to break through or turn around the support area.

Stop Loss:

To minimize the risk of loss, we recommend placing a stop loss at level 1,430.

- Entry Buy : 1,445 – 1,470
- Target Price : 1,500 – 1,525
- Support : 1,435 – 1,445
- Cut loss : 1,430



CLEO

Sariguna Primatirta Tbk.



(CLEO). Price closed higher and breakout resistance. Price has the opportunity strengthen to the next resistance. Stochastic is neutral, MACD histogram is moving positive (line is golden cross) and volume is decreasing. Confirm buy if the next candle returns bullish or buy on support if it goes down first. Be careful if you fail to stay above the support level or become a support breakdown. **(Trading Buy)**

TRADING STRATEGY:

Target Price:

The price has a bullish opportunity to test the resistance level 1,670. If it breaks level 1,670 then the price will go to level 1,700. We recommend to be careful if the price fails to break through or turn around the support area.

Stop Loss:

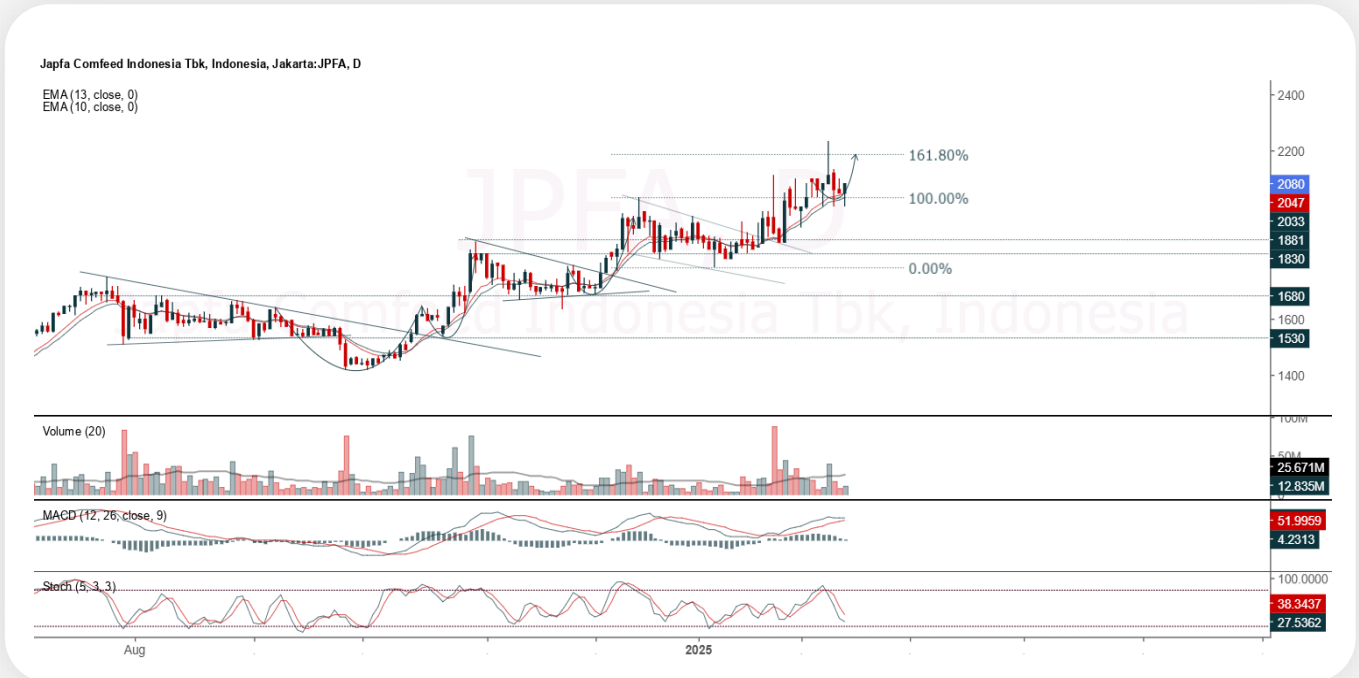
To minimize the risk of loss, we recommend placing a stop loss at level 1,570.

Entry Buy	: 1,590 – 1,625
Target Price	: 1,670 – 1,700
Support	: 1,575 – 1,590
Cut loss	: 1,570



JPFA

Japfa Comfeed Indonesia Tbk.



(JPFA). Price closed higher and breakup dynamic resistance at EMA 5. Price has the opportunity strengthen to the nearest resistance. Stochastic is still bearish, MACD histogram is moving positive (line is flat) and volume is increasing. Confirm buy if the next candle returns bullish or buy on support if it goes down first. Be careful if you fail to stay above the support level or become a support breakdown. **(Trading Buy)**

TRADING STRATEGY:

Target Price:

The price has a bullish opportunity to test the resistance level 2,130. If it breaks level 2,130 then the price will go to level 2,170. We recommend to be careful if the price fails to break through or turn around the support area.

Stop Loss:

To minimize the risk of loss, we recommend placing a stop loss at level 2,010.

Entry Buy : 2,030 – 2,080
Target Price : 2,130 – 2,170
Support : 2,020 – 2,030
Cut loss : 2,010



Forecast – Technical Analysis

Ticker	MA5	RSI Rec	MACD Trend	Recomm.	Pivot Point	Support		Resistance		Stop Loss Level
						1	2	1	2	
JCI	Positive	Oversold	Negative	Spec. Buy	6,625	6,575	6,525	6,675	6,700	6,425
ACES	Negative	Trading	Positive	Hold	785	770	750	805	820	740
ADMR	Positive	Oversold	Negative	Spec. Buy	815	800	775	840	855	765
ADRO	Positive	Oversold	Positive	Buy	2,225	2,195	2,165	2,255	2,285	2,130
AKRA	Positive	Oversold	Negative	Spec. Buy	1,110	1,100	1,095	1,115	1,125	1,075
AMMN	Positive	Oversold	Negative	Spec. Buy	6,975	6,725	6,475	7,225	7,475	6,375
AMRT	Negative	Overbought	Positive	Sell	2,935	2,855	2,795	2,995	3,075	2,750
ANTM	Negative	Trading	Negative	Sell	1,435	1,395	1,360	1,470	1,510	1,335
ARTO	Positive	Oversold	Negative	Spec. Buy	1,850	1,820	1,785	1,885	1,915	1,755
ASII	Negative	Trading	Negative	Sell	4,640	4,605	4,550	4,695	4,730	4,480
BBCA	Negative	Trading	Negative	Sell	9,075	8,975	8,925	9,125	9,225	8,775
BBNI	Positive	Trading	Negative	Hold	4,260	4,220	4,170	4,310	4,350	4,105
BBRI	Negative	Trading	Negative	Sell	3,995	3,960	3,925	4,030	4,065	3,865
BBTN	Positive	Oversold	Negative	Spec. Buy	935	920	910	945	960	895
BMRI	Positive	Oversold	Negative	Spec. Buy	4,985	4,895	4,810	5,075	5,150	4,740
BRIS	Negative	Trading	Positive	Hold	3,000	2,980	2,960	3,020	3,040	2,915
BRPT	Positive	Oversold	Negative	Spec. Buy	815	800	785	830	845	770
CPIN	Positive	Trading	Negative	Hold	4,570	4,490	4,450	4,610	4,690	4,385
CTRA	Negative	Oversold	Negative	Spec. Buy	865	855	835	885	895	825
ESSA	Negative	Trading	Negative	Sell	810	800	790	820	830	780
EXCL	Positive	Trading	Negative	Hold	2,285	2,265	2,255	2,295	2,315	2,220
GOTO	Positive	Trading	Negative	Hold	82	81	79	84	85	78
ICBP	Negative	Trading	Positive	Hold	11,200	11,000	10,800	11,400	11,600	10,625
INCO	Positive	Oversold	Negative	Spec. Buy	2,760	2,720	2,680	2,800	2,840	2,640
INDF	Negative	Trading	Positive	Hold	7,825	7,675	7,575	7,925	8,075	7,450
INKP	Positive	Oversold	Negative	Spec. Buy	6,050	5,800	5,600	6,250	6,500	5,525
ISAT	Positive	Oversold	Negative	Spec. Buy	1,730	1,705	1,655	1,780	1,805	1,630
ITMG	Positive	Trading	Negative	Hold	25,325	25,225	25,000	25,550	25,650	24,625
JPFA	Negative	Trading	Positive	Hold	2,055	2,025	1,975	2,105	2,135	1,945
JSMR	Positive	Trading	Negative	Hold	4,050	4,015	3,990	4,075	4,110	3,930
KLBF	Positive	Trading	Positive	Spec. Buy	1,290	1,270	1,255	1,305	1,325	1,235
MAPA	Positive	Oversold	Negative	Spec. Buy	835	820	805	850	865	795
MAPI	Negative	Trading	Positive	Hold	1,285	1,265	1,235	1,315	1,335	1,220
MBMA	Negative	Oversold	Positive	Spec. Buy	395	381	371	405	419	365
MDKA	Negative	Trading	Positive	Hold	1,585	1,480	1,365	1,700	1,805	1,345
MEDC	Negative	Trading	Negative	Sell	1,040	1,025	1,015	1,050	1,065	1,000
PGAS	Negative	Trading	Negative	Sell	1,630	1,610	1,580	1,660	1,680	1,560
PGEO	Positive	Oversold	Negative	Spec. Buy	860	810	760	910	960	745
PTBA	Positive	Trading	Negative	Hold	2,670	2,605	2,550	2,725	2,790	2,510
SIDO	Negative	Trading	Negative	Sell	605	590	575	620	635	565
SMGR	Positive	Oversold	Negative	Spec. Buy	2,610	2,460	2,330	2,740	2,890	2,295
SMRA	Positive	Oversold	Negative	Spec. Buy	413	407	399	421	427	393
TLKM	Positive	Trading	Negative	Hold	2,380	2,340	2,270	2,450	2,490	2,235
TOWR	Positive	Oversold	Negative	Spec. Buy	610	600	595	615	625	585
UNTR	Negative	Trading	Negative	Sell	24,650	24,375	24,000	25,025	25,300	23,625
UNVR	Positive	Oversold	Negative	Spec. Buy	1,375	1,330	1,245	1,460	1,505	1,225



Kiwoom Research Team



Sukarno Alatas

Head of Equity Research

sukarno@kiwoom.co.id | 021 5010 5800



Abdul Azis Setyo W.

Equity Research Analyst

azis@kiwoom.co.id | 021 5010 5800



Miftahul Khaer

Equity Research Analyst

khaer.miftahul@kiwoom.co.id | 021 5010 5800



HEAD OFFICE

Treasury Tower 27th Floor Unit A, District 8 Kawasan SCBD Lot 28,
Jl.Jend.Sudirman Kav 52-53, Jakarta Selatan 12190

Tel : (021) 5010 5800

Fax : (021) 5010 5820

Email : cs@kiwoom.co.id

PT Kiwoom Sekuritas Indonesia is licensed and supervised by the Financial Services Authority (OJK)

OTHER DISCLOSURES

All Kiwoom's research reports made available to clients are simultaneously available on our own website <http://www.kiwoom.co.id/>. Not all research content is redistributed, e-mailed or made available to third-party aggregators. For all research reports available on a particular stock, please contact your sales representative. Any data discrepancies in this report could be the result of different calculations and/or adjustments.

DISCLAIMER

This report has been prepared and issued by PT Kiwoom Sekuritas Indonesia. Information has been obtained from sources believed to be reliable but Kiwoom Securities do not warrant its completeness or accuracy. Forward-looking information or statements in this report contain information that is based on forecast of future results, estimates of amounts not yet determinable, assumptions, and therefore involve known and unknown risks and uncertainties which may cause the actual results, performance or achievements of their subject matter to be materially different from current expectations. To the fullest extent allowed by law, PT Kiwoom Sekuritas Indonesia shall not be liable for any direct, indirect or consequential losses, loss of profits, damages, costs or expenses incurred or suffered by any person or organization arising from reliance on or use of any information contained on this report. The information that we provide should not be construed in any manner whatsoever as, personalized advice. No mention of a particular security in this report constitutes a recommendation to buy, sell or hold that or any security, or that any particular security, portfolio of securities, transaction or investment strategy is suitable for any specific person. This report is being supplied to you solely for your information and may not be reproduced by, further distributed to or published in whole or in part by, any other person.