



## JCI Range Today

**6,565 – 6,585 (Support), 6,679 – 6,699 (Resistance)**



**Jakarta Composite Index** closed positive with bullish candle. Indicator from stochastic is still bullish, MACD histogram is moving bearish (line is sloping) and volume is decreasing. Bearish scenario: If it moves bearish, JCI is expected to weaken to the support range 6,565 – 6,585. Bullish scenario: If JCI is able to move bullish, JCI has the opportunity strengthen to the resistance range 6,679 – 6,699.

## Stock Pick Today:



**BRMS**



**ICBP**



**RAJA**



**UNTR**



## BRMS

Bumi Resources Minerals Tbk.



**(BRMS).** Price closed higher and breakout resistance. Price has the opportunity strengthen to the next resistance. Stochastic is bullish, MACD histogram is moving positive direction (line is golden cross potential) and volume is increasing. Confirm buy if the next candle returns bullish or buy on support if it goes down first. Be careful if you fail to stay above the support level or become a support breakdown. **(Trading Buy)**

### **TRADING STRATEGY:**

#### **Target Price:**

The price has a bullish opportunity to test the resistance level 372. If it breaks level 372 then the price will go to level 380. We recommend to be careful if the price fails to break through or turn around the support area.

#### **Stop Loss:**

To minimize the risk of loss, we recommend placing a stop loss at level 352.

Entry Buy	: 356 – 364
Target Price	: 372 – 380
Support	: 354 – 356
Cut loss	: 352



## ICBP

Indofood CBP Sukses Makmur Tbk.



**(ICBP).** Price closed higher and breakout harmonic resistance (FR 38.20%). Price has the opportunity strengthen to the next resistance. Stochastic is golden cross, MACD histogram is moving positive (line is bullish) and volume is increasing. Confirm buy if the next candle returns bullish or buy on support if it goes down first. Be careful if you fail to stay above the support level or become a support breakdown. **(Trading Buy)**

### **TRADING STRATEGY:**

#### **Target Price:**

The price has a bullish opportunity to test the resistance level 11,750. If it breaks level 11,750 then the price will go to level 11,925. We recommend to be careful if the price fails to break through or turn around the support area.

#### **Stop Loss:**

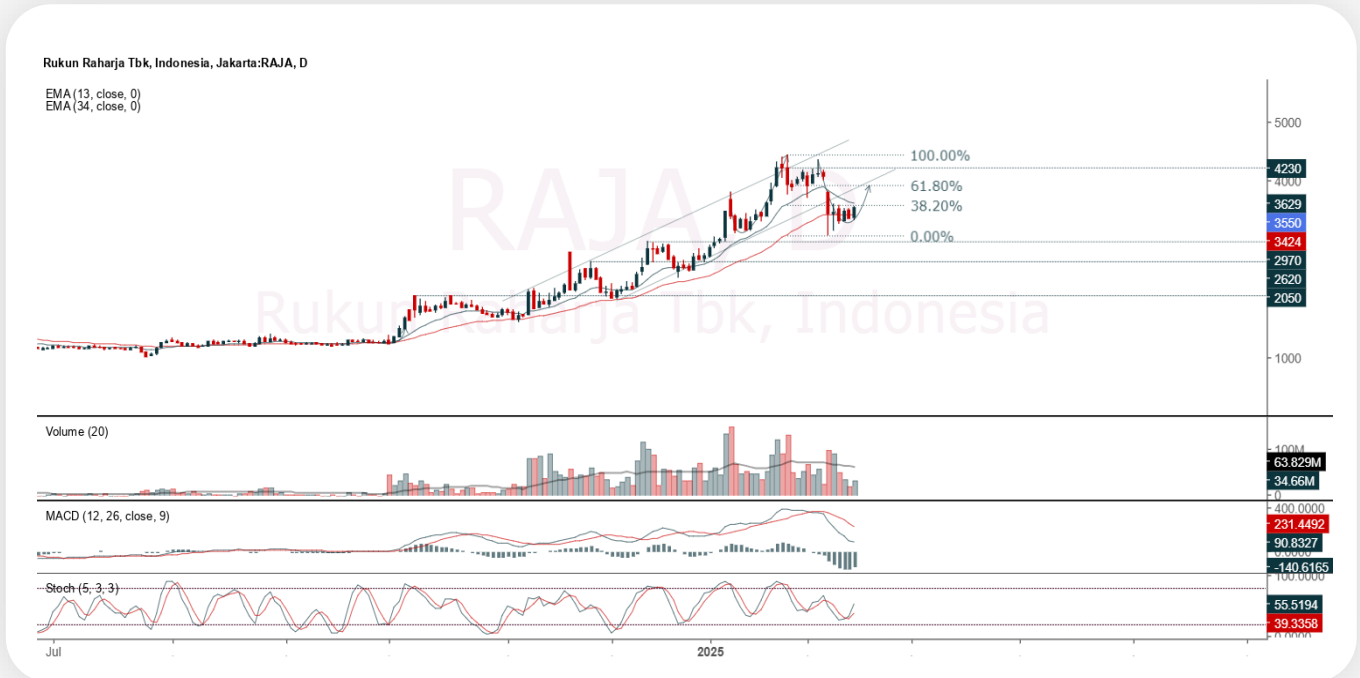
To minimize the risk of loss, we recommend placing a stop loss at level 11,200.

Entry Buy	: 11,325 – 11,525
Target Price	: 11,750 – 11,925
Support	: 11,225 – 11,325
Cut loss	: 11,200



## RAJA

Rukun Raharja Tbk.



**(RAJA).** Price closed higher and back to rally. Price has the opportunity strengthen to the nearest resistance. Stochastic is bullish, MACD histogram is moving bearish (line is sloping) and volume is increasing. Confirm buy if the next candle returns bullish or buy on support if it goes down first. Be careful if you fail to stay above the support level or become a support breakdown. **(Trading Buy)**

### **TRADING STRATEGY:**

#### **Target Price:**

The price has a bullish opportunity to test the resistance level 3,620. If it breaks level 3,620 then the price will go to level 3,680. We recommend to be careful if the price fails to break through or turn around the support area.

#### **Stop Loss:**

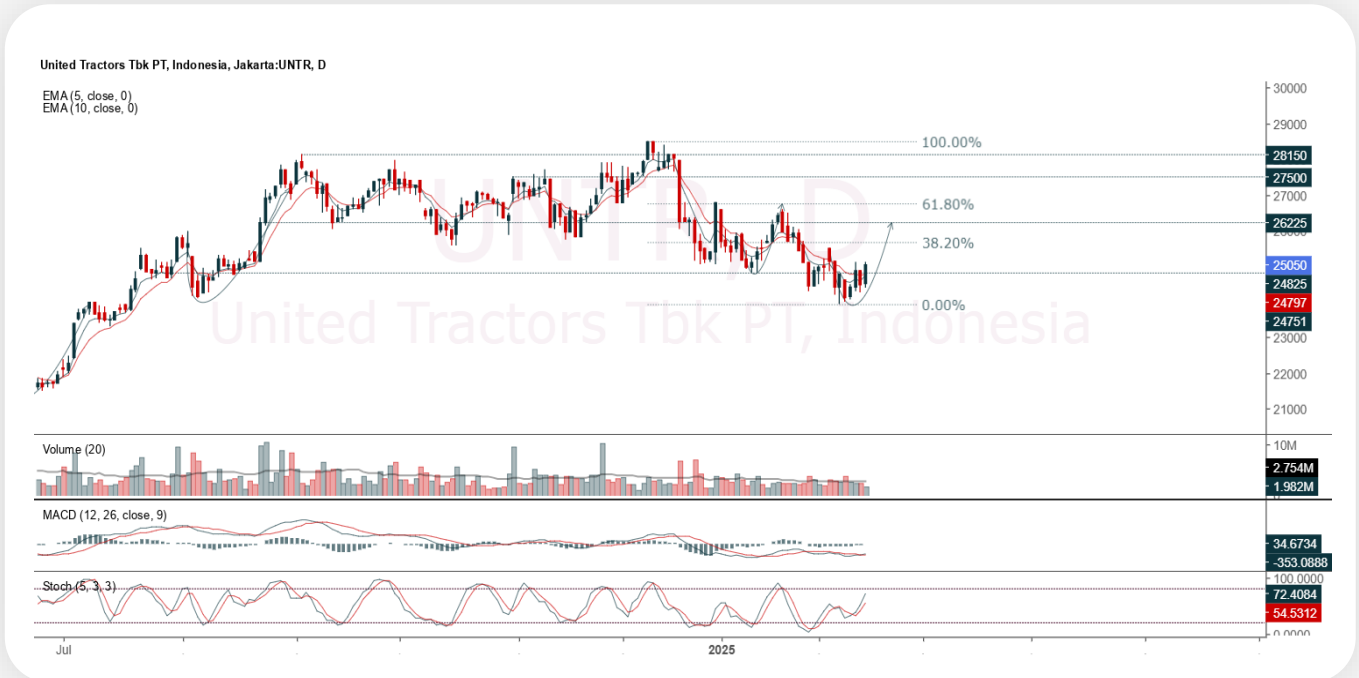
To minimize the risk of loss, we recommend placing a stop loss at level 3,450.

Entry Buy : 3,490 – 3,550  
Target Price : 3,620 – 3,680  
Support : 3,460 – 3,490  
Cut loss : 3,450



## UNTR

United Tractors Tbk.



**(UNTR).** Price closed higher and breakout resistance. Price has the opportunity strengthen to the next resistance. Stochastic is still bullish, MACD histogram is moving positive (line is golden cross) and volume is decreasing. Confirm buy if the next candle returns bullish or buy on support if it goes down first. Be careful if you fail to stay above the support level or become a support breakdown. **(Trading Buy)**

### **TRADING STRATEGY:**

#### **Target Price:**

The price has a bullish opportunity to test the resistance level 25,500. If it breaks level 25,500 then the price will go to level 25,925. We recommend to be careful if the price fails to break through or turn around the support area.

#### **Stop Loss:**

To minimize the risk of loss, we recommend placing a stop loss at level 24,375.

Entry Buy : 24,600 – 25,050  
Target Price : 25,500 – 25,925  
Support : 24,400 – 24,600  
Cut loss : 24,375



## Forecast – Technical Analysis

Ticker	MA5	RSI Rec	MACD Trend	Recomm.	Pivot Point	Support 1	Support 2	Resistance 1	Resistance 2	Stop Loss Level
JCI	Positive	Oversold	Negative	Spec. Buy	6,650	6,600	6,575	6,675	6,700	6,475
ACES	Negative	Overbought	Positive	Sell	805	790	780	815	830	765
ADMR	Positive	Oversold	Negative	Spec. Buy	825	805	795	835	855	780
ADRO	Positive	Trading	Positive	Spec. Buy	2,225	2,210	2,185	2,250	2,265	2,150
AKRA	Positive	Trading	Negative	Hold	1,105	1,100	1,085	1,120	1,125	1,065
AMMN	Negative	Oversold	Negative	Spec. Buy	6,825	6,750	6,650	6,925	7,000	6,550
AMRT	Negative	Trading	Positive	Hold	2,855	2,810	2,775	2,890	2,935	2,735
ANTM	Negative	Trading	Positive	Hold	1,505	1,475	1,445	1,535	1,565	1,420
ARTO	Positive	Oversold	Negative	Spec. Buy	1,885	1,825	1,775	1,935	1,995	1,745
ASII	Positive	Trading	Negative	Hold	4,680	4,625	4,590	4,715	4,770	4,520
BBCA	Positive	Oversold	Negative	Spec. Buy	9,000	8,925	8,875	9,050	9,125	8,750
BBNI	Positive	Trading	Negative	Hold	4,345	4,295	4,255	4,385	4,435	4,190
BBRI	Positive	Oversold	Negative	Spec. Buy	3,930	3,850	3,770	4,010	4,090	3,715
BBTN	Positive	Oversold	Negative	Spec. Buy	960	935	910	985	1,010	895
BMRI	Positive	Oversold	Negative	Spec. Buy	5,100	5,000	4,870	5,225	5,325	4,795
BRIS	Positive	Trading	Positive	Spec. Buy	2,995	2,965	2,945	3,015	3,045	2,900
BRPT	Positive	Oversold	Negative	Spec. Buy	810	800	795	815	825	785
CPIN	Positive	Trading	Negative	Hold	4,565	4,530	4,505	4,590	4,625	4,435
CTRA	Positive	Trading	Negative	Hold	880	875	865	890	895	850
ESSA	Positive	Trading	Negative	Hold	815	795	790	820	840	775
EXCL	Positive	Trading	Negative	Hold	2,285	2,275	2,265	2,295	2,305	2,230
GOTO	Positive	Trading	Negative	Hold	81	81	79	83	83	78
ICBP	Positive	Trading	Positive	Spec. Buy	11,425	11,150	10,950	11,625	11,900	10,775
INCO	Positive	Oversold	Negative	Spec. Buy	2,800	2,760	2,740	2,820	2,860	2,700
INDF	Negative	Trading	Positive	Hold	7,800	7,700	7,650	7,850	7,950	7,525
INKP	Positive	Oversold	Negative	Spec. Buy	6,100	5,950	5,825	6,225	6,375	5,750
ISAT	Positive	Oversold	Negative	Spec. Buy	1,725	1,700	1,675	1,750	1,775	1,650
ITMG	Positive	Trading	Negative	Hold	25,500	25,375	25,275	25,600	25,725	24,875
JPFA	Positive	Trading	Negative	Hold	2,035	1,970	1,910	2,095	2,160	1,880
JSMR	Positive	Trading	Negative	Hold	4,060	4,020	3,970	4,110	4,150	3,910
KLBF	Negative	Trading	Positive	Hold	1,290	1,280	1,270	1,300	1,310	1,250
MAPA	Positive	Oversold	Negative	Spec. Buy	835	810	770	875	900	755
MAPI	Positive	Oversold	Negative	Spec. Buy	1,255	1,200	1,145	1,310	1,365	1,130
MBMA	Negative	Oversold	Positive	Spec. Buy	393	383	375	401	411	369
MDKA	Negative	Trading	Positive	Hold	1,670	1,615	1,575	1,710	1,765	1,550
MEDC	Negative	Trading	Negative	Sell	1,060	1,045	1,035	1,070	1,085	1,015
PGAS	Negative	Trading	Positive	Hold	1,640	1,620	1,605	1,655	1,675	1,580
PGEO	Positive	Trading	Negative	Hold	880	865	835	910	925	820
PTBA	Positive	Trading	Positive	Spec. Buy	2,700	2,655	2,620	2,735	2,780	2,580
SIDO	Negative	Overbought	Positive	Sell	615	610	595	630	635	585
SMGR	Positive	Trading	Positive	Spec. Buy	2,715	2,635	2,545	2,805	2,885	2,505
SMRA	Positive	Oversold	Negative	Spec. Buy	419	413	409	423	429	402
TLKM	Positive	Trading	Negative	Hold	2,490	2,450	2,400	2,540	2,580	2,365
TOWR	Positive	Oversold	Negative	Spec. Buy	615	600	595	620	635	585
UNTR	Positive	Trading	Positive	Spec. Buy	24,775	24,425	24,050	25,150	25,500	23,700
UNVR	Negative	Oversold	Negative	Spec. Buy	1,450	1,405	1,370	1,485	1,530	1,350



## Kiwoom Research Team



### Sukarno Alatas

Head of Equity Research

[sukarno@kiwoom.co.id](mailto:sukarno@kiwoom.co.id) | 021 5010 5800



### Abdul Azis Setyo W.

Equity Research Analyst

[azis@kiwoom.co.id](mailto:azis@kiwoom.co.id) | 021 5010 5800



### Miftahul Khaer

Equity Research Analyst

[khaer.miftahul@kiwoom.co.id](mailto:khaer.miftahul@kiwoom.co.id) | 021 5010 5800



#### HEAD OFFICE

Treasury Tower 27th Floor Unit A, District 8 Kawasan SCBD Lot 28,  
Jl.Jend.Sudirman Kav 52-53, Jakarta Selatan 12190

Tel : (021) 5010 5800

Fax : (021) 5010 5820

Email : [cs@kiwoom.co.id](mailto:cs@kiwoom.co.id)

PT Kiwoom Sekuritas Indonesia is licensed and supervised by the Financial Services Authority (OJK)

#### OTHER DISCLOSURES

All Kiwoom's research reports made available to clients are simultaneously available on our own website <http://www.kiwoom.co.id/>. Not all research content is redistributed, e-mailed or made available to third-party aggregators. For all research reports available on a particular stock, please contact your sales representative. Any data discrepancies in this report could be the result of different calculations and/or adjustments.

#### DISCLAIMER

This report has been prepared and issued by PT Kiwoom Sekuritas Indonesia. Information has been obtained from sources believed to be reliable but Kiwoom Securities do not warrant its completeness or accuracy. Forward-looking information or statements in this report contain information that is based on forecast of future results, estimates of amounts not yet determinable, assumptions, and therefore involve known and unknown risks and uncertainties which may cause the actual results, performance or achievements of their subject matter to be materially different from current expectations. To the fullest extent allowed by law, PT Kiwoom Sekuritas Indonesia shall not be liable for any direct, indirect or consequential losses, loss of profits, damages, costs or expenses incurred or suffered by any person or organization arising from reliance on or use of any information contained on this report. The information that we provide should not be construed in any manner whatsoever as, personalized advice. No mention of a particular security in this report constitutes a recommendation to buy, sell or hold that or any security, or that any particular security, portfolio of securities, transaction or investment strategy is suitable for any specific person. This report is being supplied to you solely for your information and may not be reproduced by, further distributed to or published in whole or in part by, any other person.