



JCI Range Today

6,742 – 6,762 (Support), 6,875 – 6,895 (Resistance)



Jakarta Composite Index closed higher and breakout resistance. Indicator from stochastic is still bullish, MACD histogram is moving positive direction (line is golden cross potential) and volume is increasing. Bearish scenario: If it moves bearish, JCI is expected to weaken to the support range 6,742 – 6,762. Bullish scenario: If JCI is able to move bullish, JCI has the opportunity strengthen to the resistance range 6,875 – 6,895.

Stock Pick Today:



BTPN



PTRO



SMRA



TOBA



BTPS

Bank BTPN Syariah Tbk.



(BTPS). Price closed higher and breakout resistance. Price has the opportunity strengthen to the next resistance. Stochastic is still bullish, MACD histogram is moving positive (line is bullish) and volume is increasing significantly. Confirm buy if the next candle returns bullish or buy on support if it goes down first. Be careful if you fail to stay above the support level or become a support breakdown. **(Trading Buy)**

TRADING STRATEGY:

Target Price:

The price has a bullish opportunity to test the resistance level 1,010. If it breaks level 1,010 then the price will go to level 1,030. We recommend to be careful if the price fails to break through or turn around the support area.

Stop Loss:

To minimize the risk of loss, we recommend placing a stop loss at level 960.

Entry Buy : 970 – 990

Target Price : 1,010 – 1,030

Support : 965 – 970

Cut loss : 960



PTRO

Petrosea Tbk.



(PTRO). Price closed higher and breakout resistance. Price has the opportunity strengthen to the next resistance. Stochastic is still bullish, MACD histogram is moving positive direction (line is sloping) and volume is increasing. Confirm buy if the next candle returns bullish or buy on support if it goes down first. Be careful if you fail to stay above the support level or become a support breakdown. **(Trading Buy)**

TRADING STRATEGY:

Target Price:

The price has a bullish opportunity to test the resistance level 3,820. If it breaks level 3,820 then the price will go to level 3,880. We recommend to be careful if the price fails to break through or turn around the support area.

Stop Loss:

To minimize the risk of loss, we recommend placing a stop loss at level 3,650.

- Entry Buy : 3,690 – 3,750
- Target Price : 3,820 – 3,880
- Support : 3,660 – 3,690
- Cut loss : 3,650



SMRA

Summarecon Agung Tbk.



(SMRA). Price closed higher and back to rally. Price has the opportunity strengthen to the nearest resistance. Stochastic is still bullish, MACD histogram is moving positive (line is golden cross) and volume is increasing. Confirm buy if the next candle returns bullish or buy on support if it goes down first. Be careful if you fail to stay above the support level or become a support breakdown. **(Trading Buy)**

TRADING STRATEGY:

Target Price:

The price has a bullish opportunity to test the resistance level 436. If it breaks level 436 then the price will go to level 444. We recommend to be careful if the price fails to break through or turn around the support area.

Stop Loss:

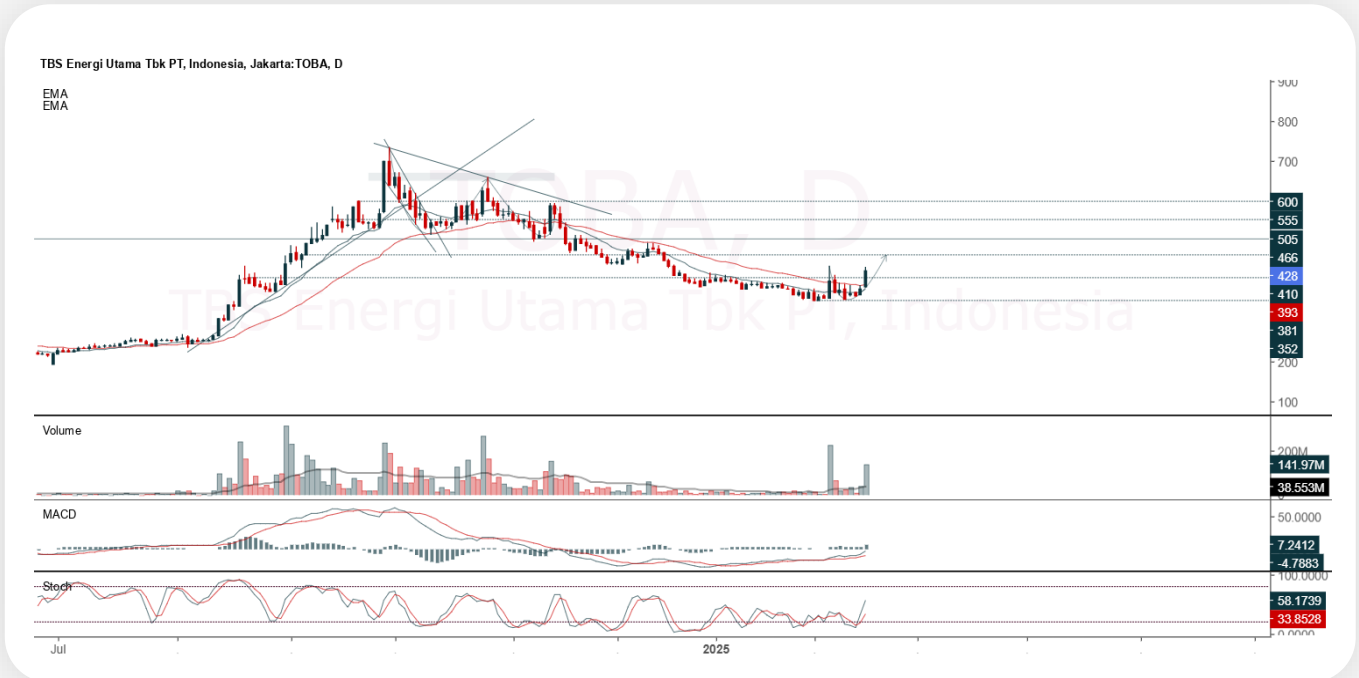
To minimize the risk of loss, we recommend placing a stop loss at level 416.

Entry Buy : 420 – 428
 Target Price : 436 – 444
 Support : 418 – 420
 Cut loss : 416



TOBA

TBS Energi Utama Tbk.



(TOBA). Price closed higher and breakout resistance. Price has the opportunity strengthen to the next resistance. Stochastic is bullish, MACD histogram is moving positive (line is bullish) and volume is increasing. Confirm buy if the next candle returns bullish or buy on support if it goes down first. Be careful if you fail to stay above the support level or become a support breakdown. **(Trading Buy)**

TRADING STRATEGY:

Target Price:

The price has a bullish opportunity to test the resistance level 438. If it breaks level 438 then the price will go to level 448. We recommend to be careful if the price fails to break through or turn around the support area.

Stop Loss:

To minimize the risk of loss, we recommend placing a stop loss at level 412.

Entry Buy : 418 – 428
 Target Price : 438 – 448
 Support : 414 – 418
 Cut loss : 412



Forecast – Technical Analysis

Ticker	MA5	RSI Rec	MACD Trend	Recomm.	Pivot Point	Support 1	Support 2	Resistance 1	Resistance 2	Stop Loss Level
JCI	Negative	Oversold	Negative	Spec. Buy	6,750	6,650	6,575	6,825	6,925	6,475
ACES	Negative	Overbought	Positive	Sell	800	790	775	815	825	765
ADMN	Positive	Oversold	Negative	Spec. Buy	840	830	810	860	870	800
ADRO	Negative	Trading	Positive	Hold	2,260	2,215	2,170	2,305	2,350	2,135
AKRA	Negative	Trading	Negative	Sell	1,110	1,095	1,085	1,120	1,135	1,070
AMMN	Positive	Oversold	Negative	Spec. Buy	6,950	6,775	6,650	7,075	7,250	6,550
AMRT	Positive	Trading	Positive	Spec. Buy	2,800	2,735	2,680	2,855	2,920	2,635
ANTM	Negative	Trading	Positive	Hold	1,540	1,520	1,495	1,565	1,585	1,475
ARTO	Positive	Oversold	Negative	Spec. Buy	1,965	1,920	1,880	2,005	2,050	1,850
ASII	Negative	Trading	Negative	Sell	4,720	4,655	4,610	4,765	4,830	4,540
BBCA	Positive	Oversold	Negative	Spec. Buy	9,150	8,975	8,800	9,325	9,500	8,675
BBNI	Negative	Trading	Negative	Sell	4,470	4,350	4,230	4,590	4,710	4,165
BBRI	Negative	Oversold	Negative	Spec. Buy	3,950	3,870	3,790	4,030	4,110	3,735
BBTN	Negative	Oversold	Negative	Spec. Buy	980	965	940	1,005	1,020	925
BMRI	Negative	Oversold	Negative	Spec. Buy	5,325	5,175	5,025	5,475	5,625	4,945
BRIS	Positive	Trading	Positive	Spec. Buy	3,005	2,955	2,895	3,065	3,115	2,850
BRPT	Negative	Oversold	Negative	Spec. Buy	845	815	790	870	900	775
CPIN	Positive	Trading	Negative	Hold	4,585	4,565	4,525	4,625	4,645	4,455
CTRA	Positive	Trading	Negative	Hold	905	880	860	925	950	850
ESSA	Negative	Trading	Negative	Sell	810	800	790	820	830	780
EXCL	Positive	Trading	Negative	Hold	2,280	2,265	2,260	2,285	2,300	2,225
GOTO	Positive	Trading	Negative	Hold	82	81	79	84	85	78
ICBP	Negative	Trading	Positive	Hold	11,525	11,425	11,325	11,625	11,725	11,150
INCO	Positive	Oversold	Negative	Spec. Buy	2,900	2,795	2,710	2,985	3,090	2,665
INDF	Negative	Trading	Positive	Hold	7,825	7,700	7,650	7,875	8,000	7,525
INKP	Positive	Oversold	Negative	Spec. Buy	6,225	6,025	5,825	6,425	6,625	5,750
ISAT	Positive	Oversold	Negative	Spec. Buy	1,725	1,685	1,655	1,755	1,795	1,630
ITMG	Negative	Trading	Negative	Sell	25,600	25,500	25,250	25,850	25,950	24,875
JPFA	Positive	Trading	Negative	Hold	1,975	1,955	1,930	2,000	2,020	1,900
JSMR	Positive	Trading	Negative	Hold	4,085	4,000	3,935	4,150	4,235	3,875
KLBF	Positive	Trading	Positive	Spec. Buy	1,285	1,280	1,265	1,300	1,305	1,245
MAPA	Positive	Oversold	Negative	Spec. Buy	845	830	815	860	875	805
MAPI	Positive	Oversold	Negative	Spec. Buy	1,210	1,185	1,160	1,235	1,260	1,140
MBMA	Negative	Oversold	Positive	Spec. Buy	387	375	369	393	405	363
MDKA	Negative	Trading	Positive	Hold	1,725	1,610	1,490	1,845	1,960	1,470
MEDC	Positive	Trading	Negative	Hold	1,080	1,060	1,040	1,100	1,120	1,025
PGAS	Negative	Trading	Positive	Hold	1,665	1,640	1,610	1,695	1,720	1,585
PGEO	Positive	Trading	Negative	Hold	885	870	860	895	910	845
PTBA	Negative	Trading	Positive	Hold	2,705	2,695	2,675	2,725	2,735	2,630
SIDO	Negative	Overbought	Positive	Sell	615	610	600	625	630	590
SMGR	Negative	Trading	Positive	Hold	2,785	2,735	2,675	2,845	2,895	2,630
SMRA	Negative	Oversold	Negative	Spec. Buy	425	415	409	431	441	402
TLKM	Negative	Trading	Negative	Sell	2,600	2,550	2,480	2,670	2,720	2,445
TOWR	Positive	Oversold	Negative	Spec. Buy	620	610	600	630	640	590
UNTR	Negative	Trading	Positive	Hold	24,850	24,675	24,325	25,200	25,375	23,975
UNVR	Positive	Oversold	Negative	Spec. Buy	1,460	1,420	1,385	1,495	1,535	1,365



Kiwoom Research Team



Sukarno Alatas

Head of Equity Research

sukarno@kiwoom.co.id | 021 5010 5800



Abdul Azis Setyo W.

Equity Research Analyst

azis@kiwoom.co.id | 021 5010 5800



Miftahul Khaer

Equity Research Analyst

khaer.miftahul@kiwoom.co.id | 021 5010 5800



HEAD OFFICE

Treasury Tower 27th Floor Unit A, District 8 Kawasan SCBD Lot 28,
Jl.Jend.Sudirman Kav 52-53, Jakarta Selatan 12190

Tel : (021) 5010 5800

Fax : (021) 5010 5820

Email : cs@kiwoom.co.id

PT Kiwoom Sekuritas Indonesia is licensed and supervised by the Financial Services Authority (OJK)

OTHER DISCLOSURES

All Kiwoom's research reports made available to clients are simultaneously available on our own website <http://www.kiwoom.co.id/>. Not all research content is redistributed, e-mailed or made available to third-party aggregators. For all research reports available on a particular stock, please contact your sales representative. Any data discrepancies in this report could be the result of different calculations and/or adjustments.

DISCLAIMER

This report has been prepared and issued by PT Kiwoom Sekuritas Indonesia. Information has been obtained from sources believed to be reliable but Kiwoom Securities do not warrant its completeness or accuracy. Forward-looking information or statements in this report contain information that is based on forecast of future results, estimates of amounts not yet determinable, assumptions, and therefore involve known and unknown risks and uncertainties which may cause the actual results, performance or achievements of their subject matter to be materially different from current expectations. To the fullest extent allowed by law, PT Kiwoom Sekuritas Indonesia shall not be liable for any direct, indirect or consequential losses, loss of profits, damages, costs or expenses incurred or suffered by any person or organization arising from reliance on or use of any information contained on this report. The information that we provide should not be construed in any manner whatsoever as, personalized advice. No mention of a particular security in this report constitutes a recommendation to buy, sell or hold that or any security, or that any particular security, portfolio of securities, transaction or investment strategy is suitable for any specific person. This report is being supplied to you solely for your information and may not be reproduced by, further distributed to or published in whole or in part by, any other person.