



JCI Range Today

6,423 – 6,443 (Support), 6,527 – 6,547 (Resistance)



Jakarta Composite Index closed lower and breakdown support. Indicator from stochastic is still bearish, MACD histogram is moving bearish (line is sloping) and volume is increasing. Bearish scenario: If it moves bearish, JCI is expected to weaken to the support range 6,423 – 6,443. Bullish scenario: If JCI is able to move bullish, JCI has the opportunity strengthen to the resistance range 6,527 – 6,547.

Stock Pick Today:



ADMR



AKRA



AMMN



EMTK



ADMR

Adaro Minerals Indonesia Tbk.



(ADMR). Price closed higher with bullish candle. Price has the opportunity strengthen to the nearest resistance. Stochastic is golden cross, MACD histogram is moving positive (line is bullish) and volume is increasing. Confirm buy if the next candle returns bullish or buy on support if it goes down first. Be careful if you fail to stay above the support level or become a support breakdown. **(Trading Buy)**

TRADING STRATEGY:

Target Price:

The price has a bullish opportunity to test the resistance level 835. If it breaks level 835 then the price will go to level 850. We recommend to be careful if the price fails to break through or turn around the support area.

Stop Loss:

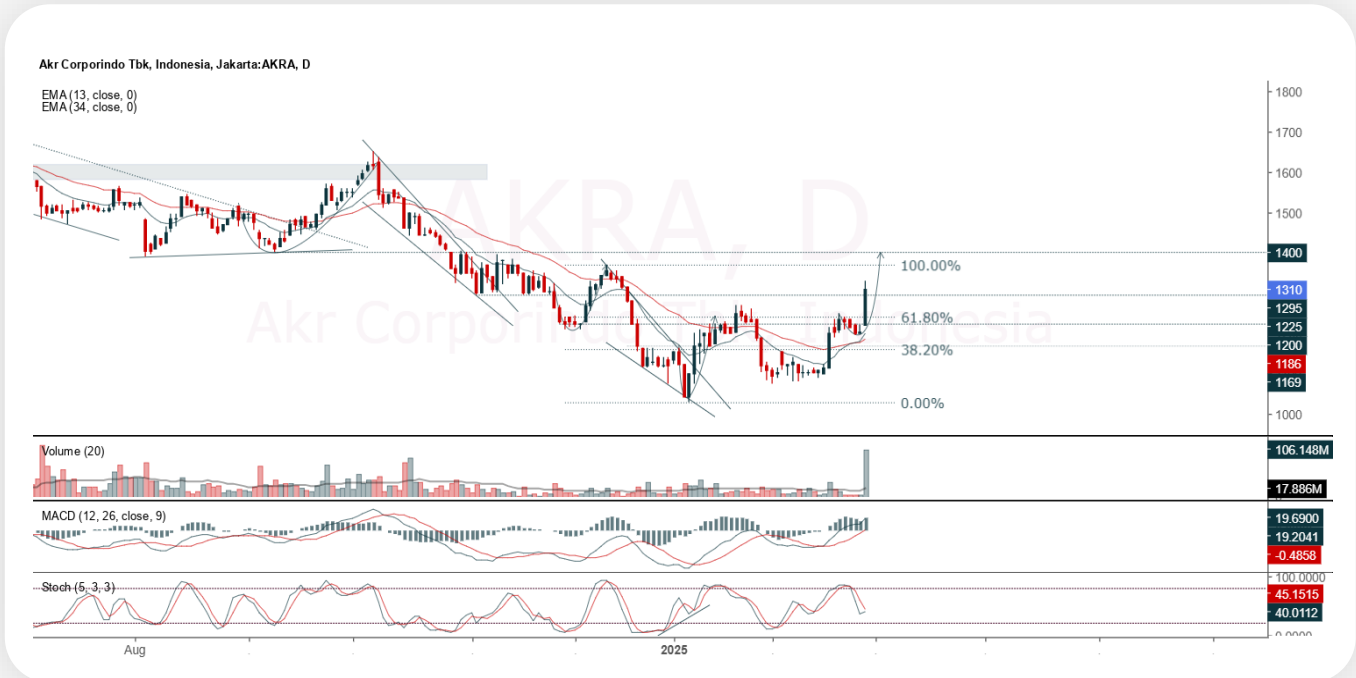
To minimize the risk of loss, we recommend placing a stop loss at level 795.

Entry Buy	: 805 – 820
Target Price	: 835 – 850
Support	: 800 – 805
Cut loss	: 795



AKRA

AKR Corporindo Tbk.



(AKRA). Price closed higher and breakout resistance. Price has the opportunity strengthen to the next resistance. Stochastic is golden cross, MACD histogram is moving positive (line is bullish) and volume is increasing significantly. Confirm buy if the next candle returns bullish or buy on support if it goes down first. Be careful if you fail to stay above the support level or become a support breakdown. **(Trading Buy)**

TRADING STRATEGY:

Target Price:

The price has a bullish opportunity to test the resistance level 1,340. If it breaks level 1,340 then the price will go to level 1,370. We recommend to be careful if the price fails to break through or turn around the support area.

Stop Loss:

To minimize the risk of loss, we recommend placing a stop loss at level 1,265.

Entry Buy : 1,280 – 1,310
 Target Price : 1,340 – 1,370
 Support : 1,270 – 1,280
 Cut loss : 1,265



AMMN

Amman Mineral Internasional Tbk.



(AMMN). Price closed higher and breakout resistance. Price has the opportunity strengthen to the next resistance. Stochastic is golden cross potential, MACD histogram is moving positive (line is bullish) and volume is increasing. Confirm buy if the next candle returns bullish or buy on support if it goes down first. Be careful if you fail to stay above the support level or become a support breakdown. **(Trading Buy)**

TRADING STRATEGY:

Target Price:

The price has a bullish opportunity to test the resistance level 7,025. If it breaks level 7,025 then the price will go to level 7,175. We recommend to be careful if the price fails to break through or turn around the support area.

Stop Loss:

To minimize the risk of loss, we recommend placing a stop loss at level 6,700.

Entry Buy	: 6,775 – 6,900
Target Price	: 7,025 – 7,175
Support	: 6,725 – 6,775
Cut loss	: 6,700



EMTK

Elang Mahkota Teknologi Tbk.



(EMTK). Price closed higher and breakout resistance. Price has the opportunity strengthen to the next resistance. Stochastic is still bearish, MACD histogram is moving bearish (line is sloping) and volume is decreasing. Confirm buy if the next candle returns bullish or buy on support if it goes down first. Be careful if you fail to stay above the support level or become a support breakdown. **(Trading Buy)**

TRADING STRATEGY:

Target Price:

The price has a bullish opportunity to test the resistance level 575. If it breaks level 575 then the price will go to level 590. We recommend to be careful if the price fails to break through or turn around the support area.

Stop Loss:

To minimize the risk of loss, we recommend placing a stop loss at level 545.

Entry Buy	: 555 – 565
Target Price	: 575 – 590
Support	: 550 – 555
Cut loss	: 545



Forecast – Technical Analysis

Ticker	MA5	RSI Rec	MACD Trend	Recomm.	Pivot Point	Support 1	Support 2	Resistance 1	Resistance 2	Stop Loss Level
JCI	Positive	Oversold	Negative	Spec. Buy	6,550	6,450	6,350	6,650	6,725	6,275
ACES	Positive	Oversold	Negative	Spec. Buy	700	690	680	710	720	670
ADMR	Positive	Oversold	Positive	Buy	820	795	775	840	865	765
ADRO	Positive	Oversold	Negative	Spec. Buy	2,100	2,050	2,000	2,150	2,200	1,970
AKRA	Positive	Trading	Positive	Spec. Buy	1,270	1,210	1,160	1,320	1,380	1,145
AMMN	Positive	Oversold	Positive	Buy	6,725	6,525	6,325	6,925	7,125	6,225
AMRT	Positive	Oversold	Negative	Spec. Buy	2,210	2,170	2,130	2,250	2,290	2,100
ANTM	Positive	Overbought	Positive	Hold	1,630	1,610	1,590	1,650	1,670	1,565
ARTO	Positive	Oversold	Positive	Buy	1,890	1,855	1,795	1,950	1,985	1,770
ASII	Positive	Oversold	Negative	Spec. Buy	4,555	4,515	4,445	4,625	4,665	4,375
BBCA	Positive	Oversold	Negative	Spec. Buy	8,650	8,525	8,350	8,825	8,950	8,225
BBNI	Positive	Trading	Negative	Hold	4,315	4,260	4,145	4,430	4,485	4,085
BBRI	Positive	Trading	Negative	Hold	3,710	3,615	3,520	3,805	3,900	3,465
BBTN	Positive	Oversold	Positive	Buy	900	880	865	915	935	850
BMRI	Positive	Oversold	Negative	Spec. Buy	4,800	4,650	4,510	4,940	5,100	4,440
BRIS	Positive	Trading	Negative	Hold	2,755	2,610	2,475	2,890	3,035	2,440
BRPT	Positive	Trading	Negative	Hold	815	800	785	830	845	770
CPIN	Positive	Trading	Negative	Hold	4,460	4,410	4,340	4,530	4,580	4,275
CTRA	Positive	Oversold	Negative	Spec. Buy	820	800	785	835	855	775
ESSA	Positive	Oversold	Negative	Spec. Buy	730	715	685	760	775	675
EXCL	Positive	Trading	Negative	Hold	2,250	2,215	2,200	2,265	2,300	2,165
GOTO	Positive	Trading	Negative	Hold	76	74	70	80	82	69
ICBP	Positive	Oversold	Negative	Spec. Buy	10,425	10,275	10,050	10,650	10,800	9,900
INCO	Positive	Trading	Positive	Spec. Buy	2,940	2,850	2,790	3,000	3,090	2,750
INDF	Positive	Trading	Positive	Spec. Buy	7,625	7,550	7,425	7,750	7,825	7,325
INKP	Positive	Oversold	Negative	Spec. Buy	5,650	5,425	5,325	5,750	5,975	5,225
ISAT	Positive	Oversold	Negative	Spec. Buy	1,610	1,575	1,535	1,650	1,685	1,510
ITMG	Positive	Oversold	Negative	Spec. Buy	24,925	24,350	24,100	25,175	25,750	23,725
JPFA	Positive	Trading	Negative	Hold	1,910	1,870	1,825	1,955	1,995	1,795
JSMR	Positive	Oversold	Negative	Spec. Buy	3,770	3,715	3,650	3,835	3,890	3,595
KLBF	Positive	Trading	Negative	Hold	1,170	1,125	1,085	1,210	1,255	1,065
MAPA	Negative	Oversold	Negative	Spec. Buy	850	835	825	860	875	810
MAPI	Negative	Overbought	Positive	Sell	1,475	1,430	1,400	1,505	1,550	1,380
MBMA	Positive	Oversold	Positive	Buy	347	334	323	358	371	318
MDKA	Positive	Trading	Positive	Spec. Buy	1,530	1,450	1,375	1,605	1,685	1,355
MEDC	Positive	Trading	Positive	Spec. Buy	1,035	1,020	995	1,060	1,075	980
PGAS	Positive	Trading	Negative	Hold	1,560	1,510	1,450	1,620	1,670	1,430
PGEO	Positive	Trading	Positive	Spec. Buy	920	900	885	935	955	870
PTBA	Positive	Trading	Negative	Hold	2,625	2,595	2,585	2,635	2,665	2,545
SIDO	Negative	Trading	Positive	Hold	590	580	555	615	625	545
SMGR	Positive	Oversold	Positive	Buy	2,645	2,575	2,525	2,695	2,765	2,485
SMRA	Positive	Oversold	Positive	Buy	393	386	379	400	407	373
TLKM	Positive	Trading	Positive	Spec. Buy	2,500	2,440	2,370	2,570	2,630	2,335
TOWR	Positive	Oversold	Negative	Spec. Buy	560	555	540	575	580	535
UNTR	Positive	Oversold	Negative	Spec. Buy	23,475	23,000	22,650	23,825	24,300	22,300
UNVR	Positive	Oversold	Negative	Spec. Buy	1,215	1,170	1,135	1,250	1,295	1,120



Kiwoom Research Team



Sukarno Alatas

Head of Equity Research

sukarno@kiwoom.co.id | 021 5010 5800



Abdul Azis Setyo W.

Equity Research Analyst

azis@kiwoom.co.id | 021 5010 5800



Miftahul Khaer

Equity Research Analyst

khaer.miftahul@kiwoom.co.id | 021 5010 5800



HEAD OFFICE

Treasury Tower 27th Floor Unit A, District 8 Kawasan SCBD Lot 28,
Jl.Jend.Sudirman Kav 52-53, Jakarta Selatan 12190

Tel : (021) 5010 5800

Fax : (021) 5010 5820

Email : cs@kiwoom.co.id

PT Kiwoom Sekuritas Indonesia is licensed and supervised by the Financial Services Authority (OJK)

OTHER DISCLOSURES

All Kiwoom's research reports made available to clients are simultaneously available on our own website <http://www.kiwoom.co.id/>. Not all research content is redistributed, e-mailed or made available to third-party aggregators. For all research reports available on a particular stock, please contact your sales representative. Any data discrepancies in this report could be the result of different calculations and/or adjustments.

DISCLAIMER

This report has been prepared and issued by PT Kiwoom Sekuritas Indonesia. Information has been obtained from sources believed to be reliable but Kiwoom Securities do not warrant its completeness or accuracy. Forward-looking information or statements in this report contain information that is based on forecast of future results, estimates of amounts not yet determinable, assumptions, and therefore involve known and unknown risks and uncertainties which may cause the actual results, performance or achievements of their subject matter to be materially different from current expectations. To the fullest extent allowed by law, PT Kiwoom Sekuritas Indonesia shall not be liable for any direct, indirect or consequential losses, loss of profits, damages, costs or expenses incurred or suffered by any person or organization arising from reliance on or use of any information contained on this report. The information that we provide should not be construed in any manner whatsoever as, personalized advice. No mention of a particular security in this report constitutes a recommendation to buy, sell or hold that or any security, or that any particular security, portfolio of securities, transaction or investment strategy is suitable for any specific person. This report is being supplied to you solely for your information and may not be reproduced by, further distributed to or published in whole or in part by, any other person.