

Weekly Report

ED: 10 – 14 March 2025

**Market Optimism: US, China Economic
Data in the Spotlight, Indonesia
Remains Confident**



Market Data

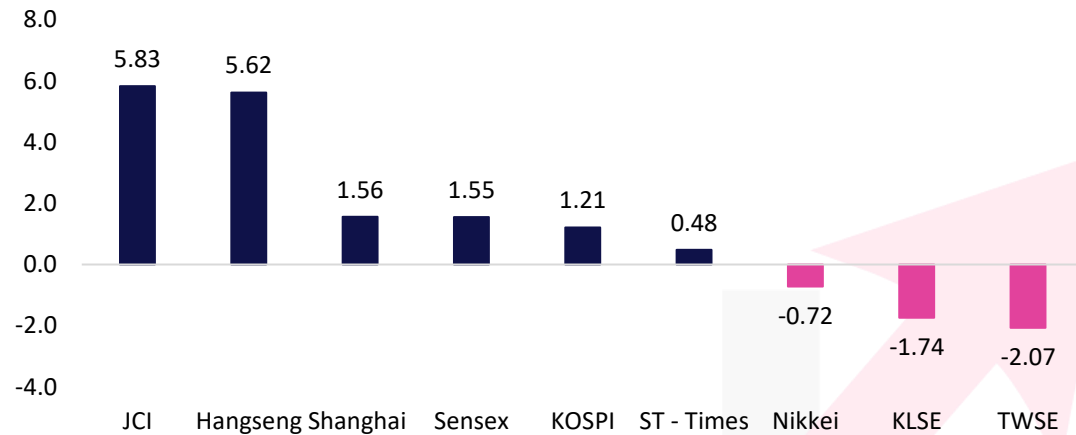
During last week, JCI closed 6,636.00 (+5.83%). Foreign investors net buy 144 billion (regular market) or 451 billion net sell (all markets). The stocks that became foreign net buyers during the week were: BBCA (525.5B), ASII (250.8B), JPFA (117.4B), TPIA (101.2B), & BBRI (84.7B). The stocks becoming Foreign net sellers during the week were: BMRI (495.4B), BRIS (209.8B), PTRO (170.8B), MDKA (161.7B), INKP (136.8B). The rebound of big caps stocks such as banking is the driver of the JCI strengthening, on the other hand during last week USD/IDR also experienced a strengthening of 1.81%. On the other hand Prabowo also held a meeting with businessmen in Indonesia which was also responded positively by investors.

Over the next week from the US there will be the release of JOLTs Job Opening data which is expected to increase to 7.71M (Prev. 7.6M), in addition there will also be the release of Inflation data which is expected to be 2.9% YoY (Prev. 3% YoY), Core Inflation is expected to be 3.2% YoY (Prev. 3.3% YoY) and there will also be the release of PPI and Michigan Consumer data. On the other hand, China recorded Deflation of -0.7% YoY (Prev. 0.5% YoY) which indicates that consumption in China is still low. On the other hand, there will also be data releases such as New Yuan Loans, M2 Money Supply, and Outstanding Loan Growth from China.

While from Indonesia there will be the release of Car Sales which is expected to still decline to -7% YoY which is better than the previous recorded decline of -11.3% YoY. On the other hand, there will be Retail Sales and Consumer Confidence data which is expected to remain at an optimistic level and increase to 127.5 (Prev. 127.2).

Asia Pacific	Country	P/E	PBV	YTD%
KOSPI	Korea	12.1	0.9	6.83
JCI	Indonesia	15.4	1.8	-6.27
Shanghai	China	16.3	1.4	0.62
TWSE	Taiwan	17.2	2.6	-1.99
KLSE	Malaysia	14.5	1.4	-5.79
ST - Times	Singapore	12.7	1.3	3.35
Sensex	India	21.8	3.4	-4.87
Hangseng	Hongkong	12.1	1.3	20.79
Nikkei	Japan	18.9	1.9	-7.54

The Growth of the Reference Stock Price Index by 1 Week%

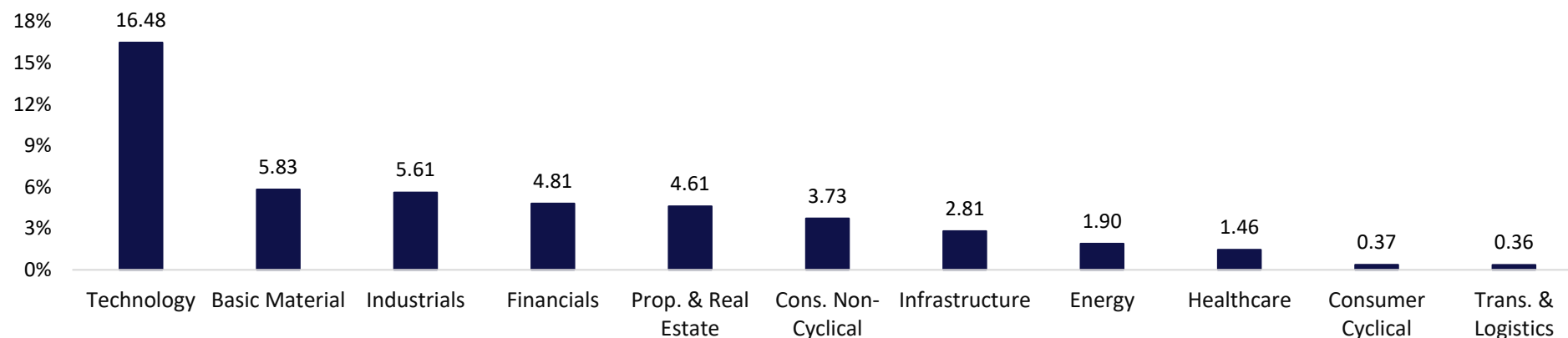


Market Data

Terdaftar dan diawasi oleh :



Sectoral Index (1W%)



LQ45 Stock Ranking

Top Gainers	Last	Chg%	YTD%	MC (T)
UNVR	1,200	18.23	-36.34	45.78
INKP	5,400	14.89	-20.59	29.54
ADMR	890	14.84	-25.83	36.39

Top Loser	Last	Chg%	YTD%	MC (T)
ESSA	670	-8.22	-17.28	11.54
MBMA	310	-5.49	-32.31	33.48
PGEO	840	-4.00	-10.16	34.87

Sectors	5D%	YTD%
Basic Material	5.83	-11.00
Consumer Cyclical	0.37	-7.42
Energy	1.9	-8.84
Financials	4.81	-2.95
Healthcare	1.46	-8.03
Industrials	5.61	-5.89
Infrastructure	2.81	-13.18
Cons. Non-Cyclical	3.73	-9.44
Prop. & Real Estate	4.61	-3.20
Technology	16.48	81.83
Trans. & Logistics	0.36	-10.64



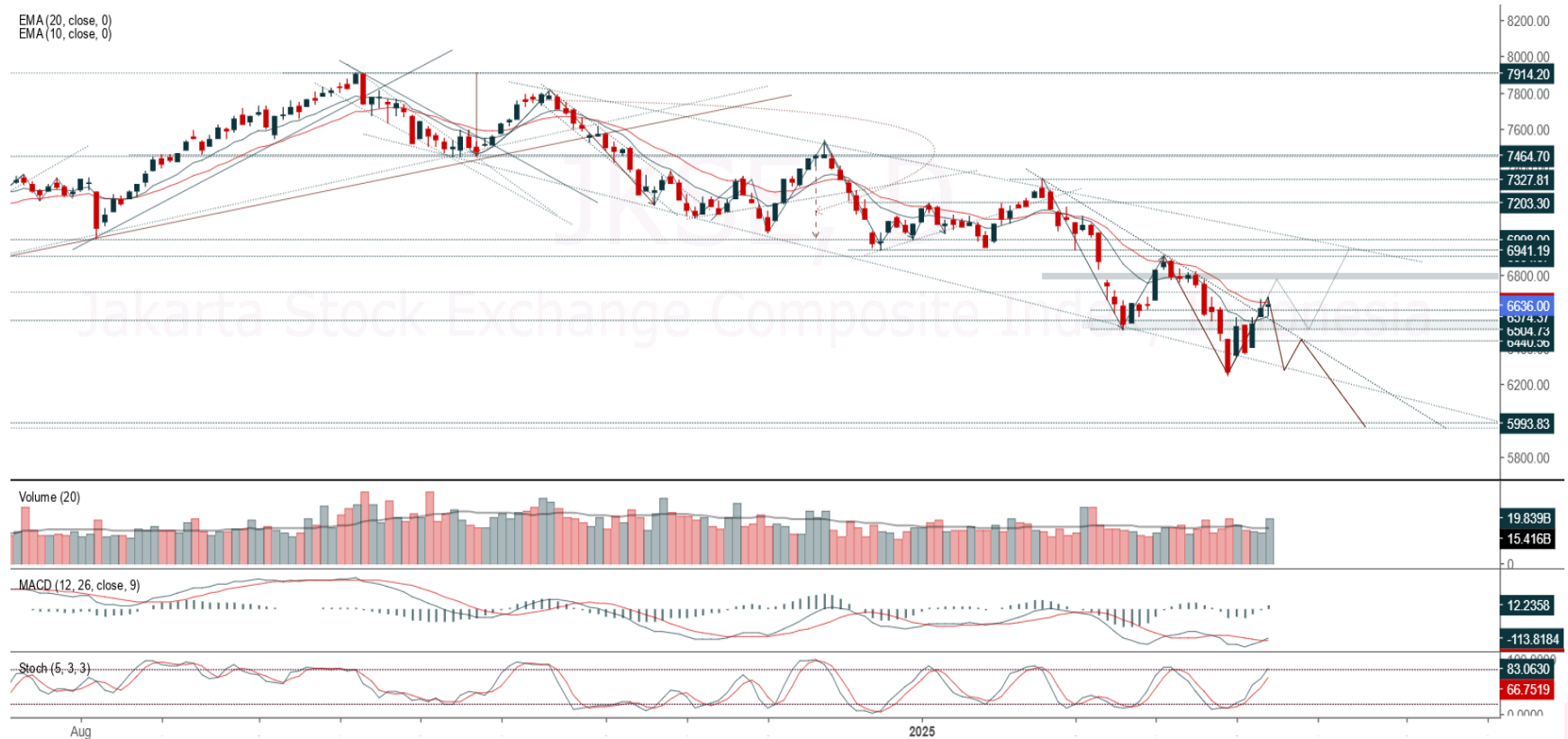
Ticker: JCI Index

Terdaftar dan
diawasi oleh :



Jakarta Stock Exchange Composite Index, Indonesia, Jakarta:JKSE, D

EMA (20, close, 0)
EMA (10, close, 0)



JCI closed positive with bullish candle. Indicator from stochastic is still bullish, MACD histogram is moving positive (line is golden cross) and volume is increasing. Bearish scenario: If it moves bearish, JCI is expected to weaken to the support range 6,485 – 6,505. Bullish scenario: If JCI is able to move bullish, JCI has the opportunity strengthen to the resistance range 6,752 – 6,772.

Support Flow 6,485 – 6,505, Resistance Flow 6,752 – 6,772



Ticker : INCO



(INCO) Price closed higher and breakout resistance. Price has the opportunity strengthen to the next resistance. Stochastic is golden cross, MACD histogram is moving positive (line is bullish) and volume is increasing. If the price falls first, use a buy on weakness strategy in the support area. Confirmation to buy again if the candle is bullish, with the first target at level 3,210, next at 3,280. We recommend being careful if there is a bearish candle and a breakdown of the nearest support level in the range 2,990 – 3,020. **(Trading Buy)**

Entry Buy : 3,020 – 3,100
Target Price : 3,210 – 3,280
Support : 2,990 – 3,020
Cut loss : 2,980

Ticker : LSIP

Perusahaan Perkebunan London Sumatra Indonesia Tbk PT, Indonesia, Jakarta:LSIP, D

EMA (13, close, 0)
EMA (34, close, 0)



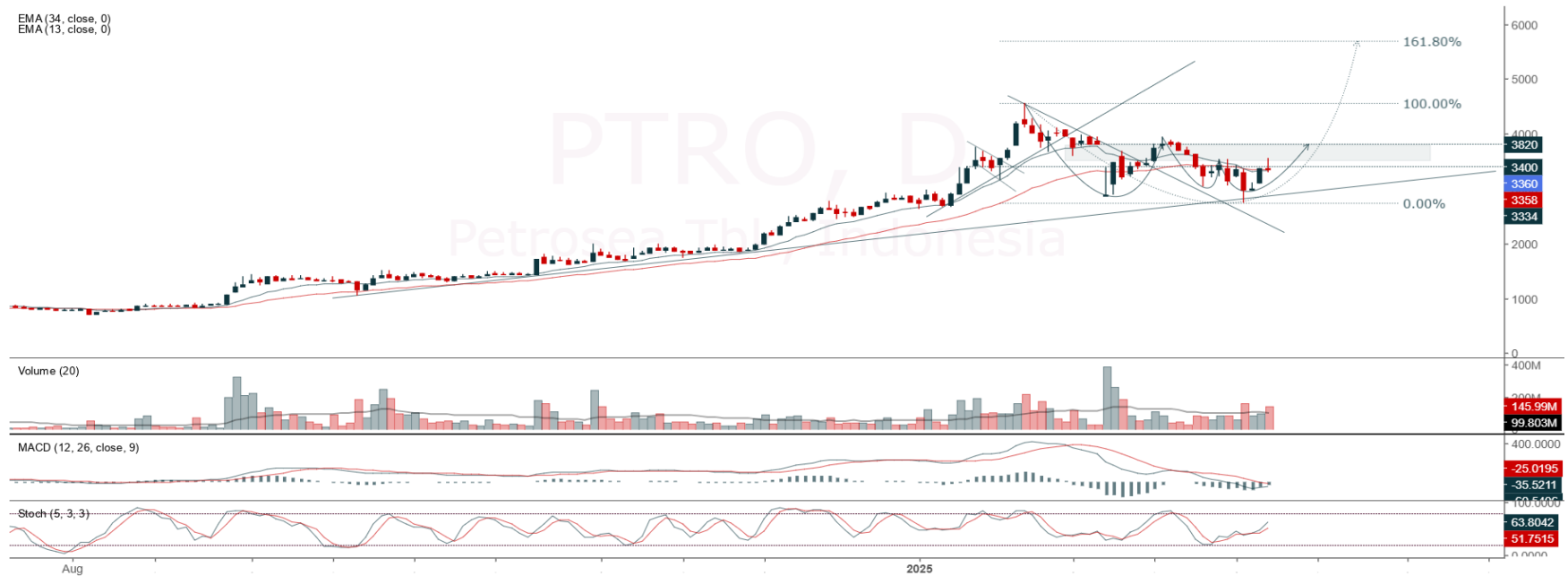
(LSIP) Price closed higher and breakout harmonic resistance (FR 61.80%). Price has the opportunity strengthen to the next resistance. Stochastic is bullish, MACD histogram is moving positive (line is bullish) and volume is increasing. If the price falls first, use a buy on weakness strategy in the support area. Confirmation to buy again if the candle is bullish, with the first target at level 1,145, next at 1,170. We recommend being careful if there is a bearish candle and a breakdown of the nearest support level in the range 1,070 – 1,080. **(Trading Buy)**

Entry Buy : 1,080 – 1,105
Target Price : 1,145 – 1,170
Support : 1,070 – 1,080
Cut loss : 1,065

Ticker : PTRO

Petrosea Tbk, Indonesia, Jakarta:PTRO, D

EMA (34, close, 0)
EMA (13, close, 0)



(PTRO) Price closed negative with bearish candle. Price has the opportunity strengthen to the nearest resistance. Stochastic is still bullish, MACD histogram is moving positive direction (line is golden cross potential) and volume is increasing. If the price falls first, use a buy on weakness strategy in the support area. Confirmation to buy again if the candle is bullish, with the first target at level 3,480, next at 3,550. We recommend being careful if there is a bearish candle and a breakdown of the nearest support level in the range 3,240 – 3,270. **(Buy On Weakness)**

Entry Buy : 3,270 – 3,360
Target Price : 3,480 – 3,550
Support : 3,240 – 3,270
Cut loss : 3,230



Review Stock Recommendation last Week

GGRM : The price closed at 10,525 (-0.24%) and highest at 10,900 (+3.32%). Prices still have the opportunity to strengthen as long as the support level holds. Last price closed with bearish candle. Beware if the price breaks below the support.

ITMA : The price closed at 895 (-5.79%) and breakdown support, if successful cut loss at 915 is only -3.83%. Prices still have the opportunity to strengthen if price back to above support level. Last price closed with bullish candle. Beware if the price breaks below new support at 875.

SSMS : The price closed at 1,600 (-4.48%) and breakdown support. Prices still have the opportunity to strengthen if price back to above support level. Last price closed with doji candle. Beware if the price breaks below new support at 1,560.

ECONOMIC CALENDAR

Terdaftar dan
diawasi oleh :



Date	Event	Prev	Frcst
Monday March 10 2025			
6:50 AM	JP <u>Current Account JAN</u>	¥1077.3B	¥-70.0B
2:00 PM	DE <u>Balance of Trade JAN</u>	€20.7B	€25.1B
2:00 PM	DE <u>Exports MoM JAN</u>	2.9%	-
2:00 PM	DE <u>Industrial Production MoM JAN</u>	-2.4%	1.5%
10:00 PM	US <u>Consumer Inflation Expectations FEB</u>	3%	3.2%
Tuesday March 11 2025			
10:00 AM	ID <u>Consumer Confidence FEB</u>	127.2	127.5
6:30 AM	JP <u>Household Spending YoY JAN</u>	2.7%	3.6%
6:50 AM	JP <u>GDP Growth Rate QoQ Final Q4</u>	0.3%	0.7%
7:01 AM	GB <u>BRC Retail Sales Monitor YoY FEB</u>	2.5%	2.3%
9:00 PM	US <u>JOLTs Job Openings JAN</u>	7.6M	7.5M
Wednesday March 12 2025			
10:15 AM	ID <u>Retail Sales YoY JAN</u>	1.8%	0.4%
7:30 PM	US <u>Core Inflation Rate MoM FEB</u>	0.4%	0.3%
7:30 PM	US <u>Core Inflation Rate YoY FEB</u>	3.3%	3.1%
7:30 PM	US <u>Inflation Rate MoM FEB</u>	0.5%	0.3%
7:30 PM	US <u>Inflation Rate YoY FEB</u>	3%	2.9%
Thursday March 13 2025			
1:00 AM	US <u>Monthly Budget Statement FEB</u>	\$-129B	\$-90.0B
6:00 AM	KR <u>Unemployment Rate FEB</u>	2.9%	3.0%
7:30 PM	US <u>PPI MoM FEB</u>	0.4%	0.3%
7:30 PM	US <u>Core PPI MoM FEB</u>	0.3%	0.2%
7:30 PM	US <u>Initial Jobless Claims MAR/08</u>	221K	230.0K
Friday March 14 2025			
2:00 PM	DE <u>Inflation Rate YoY Final FEB</u>	2.3%	2.3%
2:00 PM	GB <u>GDP MoM JAN</u>	0.4%	0.1%
2:00 PM	GB <u>Goods Trade Balance JAN</u>	£-17.45B	£-18.6B
2:45 PM	FR <u>Inflation Rate YoY Final FEB</u>	1.7%	0.8%
9:00 PM	US <u>Michigan Consumer Sentiment Prel MAR</u>	64.7	63.2

Source: Bloomberg LP



Our Team

Liza Camelia Suryanata
Head of Equity Research
liza.camelia@kiwoom.co.id | 021 5010 5800

Sukarno Alatas
Equity Research Analyst
sukarno@kiwoom.co.id | 021 5010 5800

Abdul Azis Setyo Wibowo
Equity Research Analyst
azis@kiwoom.co.id | 021 5010 5800

Miftahul Khaer
Equity Research Analyst
khaer.miftahul@kiwoom.co.id | 021 5010 5800

OTHER DISCLOSURES

All Kiwoom's research reports made available to clients are simultaneously available on our own website <http://www.kiwoom.co.id/>. Not all research content is redistributed, e-mailed or made available to third-party aggregators. For all research reports available on a particular stock, please contact your sales representative. Any data discrepancies in this report could be the result of different calculations and/or adjustments.

DISCLAIMER This report has been prepared and issued by PT Kiwoom Sekuritas Indonesia. Information has been obtained from sources believed to be reliable but Kiwoom Securities do not warrant its completeness or accuracy. Forward-looking information or statements in this report contain information that is based on forecast of future results, estimates of amounts not yet determinable, assumptions, and therefore involve known and unknown risks and uncertainties which may cause the actual results, performance or achievements of their subject matter to be materially different from current expectations.

To the fullest extent allowed by law, PT Kiwoom Sekuritas Indonesia shall not be liable for any direct, indirect or consequential losses, loss of profits, damages, costs or expenses incurred or suffered by any person or organization arising from reliance on or use of any information contained on this report. The information that we provide should not be construed in any manner whatsoever as, personalized advice.

No mention of a particular security in this report constitutes a recommendation to buy, sell or hold that or any security, or that any particular security, portfolio of securities, transaction or investment strategy is suitable for any specific person. This report is being supplied to you solely for your information and may not be reproduced by, further distributed to or published in whole or in part by, any other person.

Terdaftar dan
diawasi oleh :

