



JCI Range Today

6,520 – 6,500 (Support), 6,685 – 6,880 (Resistance)



Jakarta Composite Index closed negative with bearish candle. Indicator from stochastic is death cross, MACD histogram is moving positive (line is bullish) and volume is decreasing. Bearish scenario: If it moves bearish, JCI is expected to weaken to the support range 6,520 – 6,500. Bullish scenario: If JCI is able to move bullish, JCI has the opportunity strengthen to the resistance range 6,685 – 6,880.

Stock Pick Today:



AMMN



ANTM



MDKA



MEDC



AMMN

Amman Mineral Internasional Tbk.



(AMMN). The price closed lower and is approaching the support area, presenting a potential technical rebound opportunity. The strengthening potential is supported by the MACD line moving toward the positive direction, and if a technical rebound occurs after touching the support, it could form a double bottom pattern.

ADVICE: Gradual buy accumulation or buy on weakness in the support area if the price opens in negative territory.

Entry Buy : 5,950 – 6,175
Target Price : 6,575 – 6,800
Support : 5,900 – 5,950
Cut loss : 5,800



ANTM

Aneka Tambang Tbk.



(ANTM). The price closed without breaking down below the previous day's low and has the potential to strengthen towards the nearest resistance.

ADVICE: Gradual buy accumulation or buy on weakness in the support area if the price opens in negative territory.

Entry Buy : 1,480 – 1,520
Target Price : 1,570 – 1,600
Support : 1,465 – 1,480
Cut loss : 1,455



MDKA

Merdeka Copper Gold Tbk.



(MDKA). The price closed lower and is testing the support level, with a potential opportunity if a breakout fails. The strengthening potential is supported by the MACD histogram moving into the positive area and increasing volume trends.

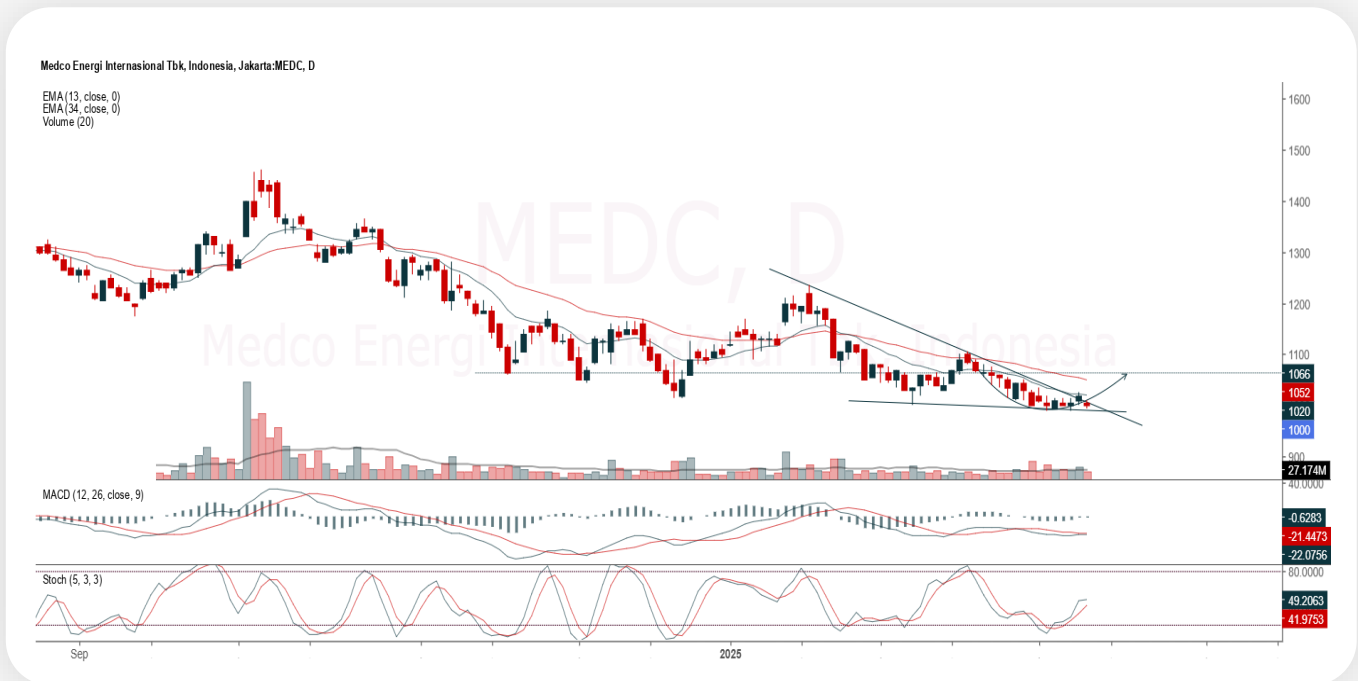
ADVICE: Buy on weakness, or if the price manages to rise above the 1,330 level, you can enter a buy trade directly.

Entry Buy : 1,230 – 1,310
Target Price : 1,375 – 1,400
Support : 1,220 – 1,230
Cut loss : 1,210



MEDC

Medco Energi Internasional Tbk.



(MEDC). The price is moving in the support area and is testing the trendline resistance. The potential for strengthening is supported by a bullish stochastic and the MACD line/histogram moving into a golden cross/positive area.

ADVICE: You can trade by buying, or you can wait for the next movement. Be cautious if a breakdown occurs at the 990 level.

Entry Buy : 990 – 1,000
Target Price : 1,035 – 1,050
Support : 980 – 990
Cut loss : 970



Forecast – Technical Analysis

Ticker	MA5	RSI Rec	MACD Trend	Recomm.	Pivot Point	Support 1	Support 2	Resistance 1	Resistance 2	Stop Loss Level
JCI	Negative	Trading	Positive	Hold	6,525	6,500	6,475	6,575	6,600	6,375
ACES	Negative	Oversold	Negative	Spec. Buy	670	660	650	680	690	640
ADMR	Negative	Trading	Positive	Hold	860	830	805	885	915	795
ADRO	Negative	Oversold	Negative	Spec. Buy	1,875	1,840	1,790	1,925	1,960	1,760
AKRA	Negative	Trading	Positive	Hold	1,285	1,265	1,250	1,300	1,320	1,230
AMMN	Negative	Oversold	Positive	Spec. Buy	6,275	6,150	6,075	6,350	6,475	5,975
AMRT	Positive	Oversold	Positive	Buy	2,365	2,315	2,275	2,405	2,455	2,240
ANTM	Negative	Trading	Negative	Sell	1,500	1,475	1,440	1,535	1,560	1,420
ARTO	Negative	Oversold	Positive	Spec. Buy	1,850	1,800	1,745	1,905	1,955	1,720
ASII	Negative	Trading	Positive	Hold	4,755	4,710	4,655	4,810	4,855	4,585
BBCA	Negative	Trading	Positive	Hold	8,950	8,850	8,775	9,025	9,125	8,650
BBNI	Negative	Trading	Positive	Hold	4,415	4,365	4,315	4,465	4,515	4,250
BBRI	Negative	Trading	Positive	Hold	3,735	3,680	3,605	3,810	3,865	3,550
BBTN	Negative	Oversold	Positive	Spec. Buy	845	835	825	855	865	815
BMRI	Positive	Oversold	Positive	Buy	4,705	4,625	4,565	4,765	4,845	4,495
BRIS	Negative	Oversold	Negative	Spec. Buy	2,515	2,490	2,455	2,550	2,575	2,420
BRPT	Negative	Trading	Positive	Hold	800	790	780	810	820	770
CPIN	Negative	Trading	Negative	Sell	4,375	4,275	4,215	4,435	4,535	4,150
CTRA	Negative	Trading	Positive	Hold	845	835	820	860	870	805
ESSA	Positive	Oversold	Negative	Spec. Buy	620	600	580	640	660	570
EXCL	Negative	Trading	Positive	Hold	2,270	2,245	2,230	2,285	2,310	2,195
GOTO	Negative	Trading	Positive	Hold	82	80	79	83	85	77
ICBP	Positive	Oversold	Negative	Spec. Buy	10,425	10,300	10,175	10,550	10,675	10,025
INCO	Negative	Oversold	Positive	Spec. Buy	2,680	2,580	2,460	2,800	2,900	2,425
INDF	Negative	Trading	Negative	Sell	7,375	7,275	7,175	7,475	7,575	7,075
INKP	Negative	Oversold	Negative	Spec. Buy	4,955	4,815	4,685	5,075	5,225	4,615
ISAT	Positive	Oversold	Positive	Buy	1,535	1,510	1,480	1,565	1,590	1,460
ITMG	Negative	Oversold	Negative	Spec. Buy	23,650	23,375	22,850	24,175	24,450	22,500
JPFA	Negative	Trading	Positive	Hold	2,120	2,065	2,030	2,155	2,210	1,995
JSMR	Negative	Trading	Positive	Hold	3,775	3,745	3,725	3,795	3,825	3,665
KLBF	Positive	Oversold	Negative	Spec. Buy	1,060	1,050	1,040	1,070	1,080	1,025
MAPA	Negative	Trading	Positive	Hold	820	795	775	840	865	760
MAPI	Negative	Trading	Positive	Hold	1,465	1,435	1,390	1,510	1,540	1,370
MBMA	Positive	Oversold	Negative	Spec. Buy	288	281	270	299	306	265
MDKA	Positive	Oversold	Negative	Spec. Buy	1,330	1,285	1,240	1,375	1,420	1,220
MEDC	Negative	Oversold	Negative	Spec. Buy	1,005	995	990	1,010	1,020	975
PGAS	Positive	Oversold	Negative	Spec. Buy	1,465	1,445	1,425	1,485	1,505	1,405
PGEO	Positive	Oversold	Negative	Spec. Buy	820	810	800	830	840	790
PTBA	Negative	Oversold	Negative	Spec. Buy	2,500	2,475	2,460	2,515	2,540	2,420
SIDO	Negative	Trading	Negative	Sell	565	555	550	570	580	540
SMGR	Negative	Oversold	Negative	Spec. Buy	2,355	2,305	2,255	2,405	2,455	2,220
SMRA	Negative	Oversold	Positive	Spec. Buy	381	376	371	386	391	365
TLKM	Negative	Trading	Negative	Sell	2,375	2,355	2,335	2,395	2,415	2,300
TOWR	Positive	Oversold	Negative	Spec. Buy	515	510	499	525	530	491
UNTR	Negative	Trading	Positive	Hold	23,675	23,375	23,050	24,000	24,300	22,700
UNVR	Negative	Trading	Positive	Hold	1,175	1,155	1,120	1,210	1,230	1,105



Kiwoom Research Team



Liza Camelia Suryanata

Head of Equity Research
liza.camelia@kiwoom.co.id | 021 5010 5800



Sukarno Alatas

Equity Research Analyst
sukarno@kiwoom.co.id | 021 5010 5800



Abdul Azis Setyo W.

Equity Research Analyst
azis@kiwoom.co.id | 021 5010 5800



Miftahul Khaer

Equity Research Analyst
khaer.miftahul@kiwoom.co.id | 021 5010 5800



HEAD OFFICE

Treasury Tower 27th Floor Unit A, District 8 Kawasan SCBD Lot 28,
Jl.Jend.Sudirman Kav 52-53, Jakarta Selatan 12190

Tel : (021) 5010 5800
Fax : (021) 5010 5820
Email : cs@kiwoom.co.id

PT Kiwoom Sekuritas Indonesia is licensed and supervised by the Financial Services Authority (OJK)

OTHER DISCLOSURES

All Kiwoom's research reports made available to clients are simultaneously available on our own website <http://www.kiwoom.co.id/>. Not all research content is redistributed, e-mailed or made available to third-party aggregators. For all research reports available on a particular stock, please contact your sales representative. Any data discrepancies in this report could be the result of different calculations and/or adjustments.

DISCLAIMER

This report has been prepared and issued by PT Kiwoom Sekuritas Indonesia. Information has been obtained from sources believed to be reliable but Kiwoom Securities do not warrant its completeness or accuracy. Forward-looking information or statements in this report contain information that is based on forecast of future results, estimates of amounts not yet determinable, assumptions, and therefore involve known and unknown risks and uncertainties which may cause the actual results, performance or achievements of their subject matter to be materially different from current expectations. To the fullest extent allowed by law, PT Kiwoom Sekuritas Indonesia shall not be liable for any direct, indirect or consequential losses, loss of profits, damages, costs or expenses incurred or suffered by any person or organization arising from reliance on or use of any information contained on this report. The information that we provide should not be construed in any manner whatsoever as, personalized advice. No mention of a particular security in this report constitutes a recommendation to buy, sell or hold that or any security, or that any particular security, portfolio of securities, transaction or investment strategy is suitable for any specific person. This report is being supplied to you solely for your information and may not be reproduced by, further distributed to or published in whole or in part by, any other person.