



KSI Research

KIWOOM
SEKURITAS INDONESIA

Technical Recommendation

Jakarta Composite Index Range Today

6,700 – 6,525

Support

6,900 – 7,000

Resistance

Published on 06 May 2025



Jakarta Composite Index

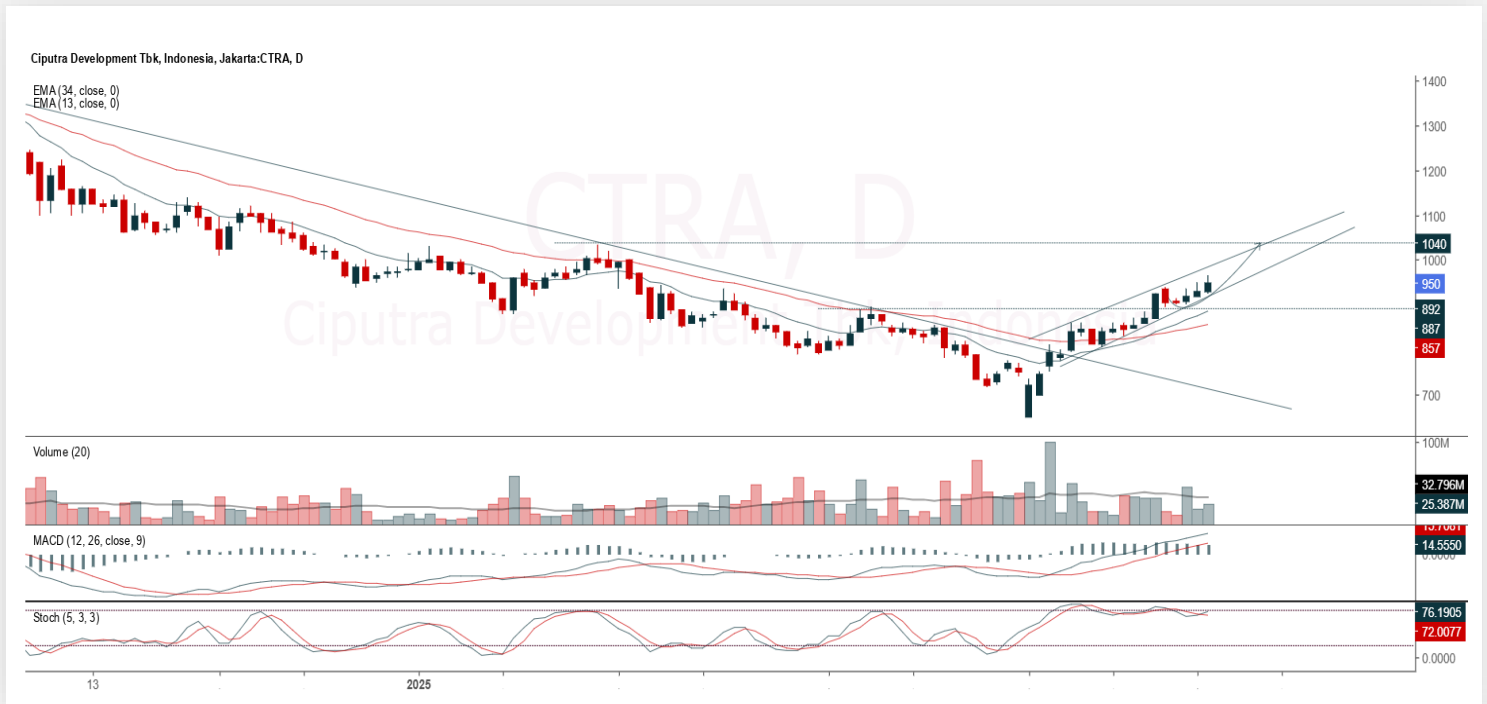
JCI managed to record a gain of 16.22pts / +0.24% to the level of 6,831.95 supported by modest foreign spending of IDR 83.87 billion. **KIWOOM RESEARCH** notes that it is not impossible for JCI to stay steady toward the nearest TARGET in the 6,900 – 7,000 area. However, bearish reversal candles have begun to appear in the Resistance area (yesterday looked like a Shooting Star, the day before was similar to a Hanging Man), which inevitably forces us to start applying a Trailing Stop, just in case JCI's strength reverses into a healthy pullback to the nearest Support: MA10 / 6,700.

ADVICE: Set your *TRAILING STOP*.



CTRA

Ciputra Development Tbk.



(CTRA). Price closed with another rally and continues to move within its trend. The uptrend is supported by a renewed golden cross in the Stochastic, a bullish MACD line with a positive histogram, and increasing volume.

ADVICE: Trading buy or averaging up.

Entry Buy	Target Price	Support	Cut Loss
920 – 950	990 – 1,030	895 – 920	885



HRUM

Harum Energy Tbk.



(HRUM). Price successfully rebounded after touching the demand/support area and shows potential to form a cup and handle pattern. The uptrend is supported by a renewed golden cross in the Stochastic, a bullish MACD line with a positive histogram, and increasing volume.

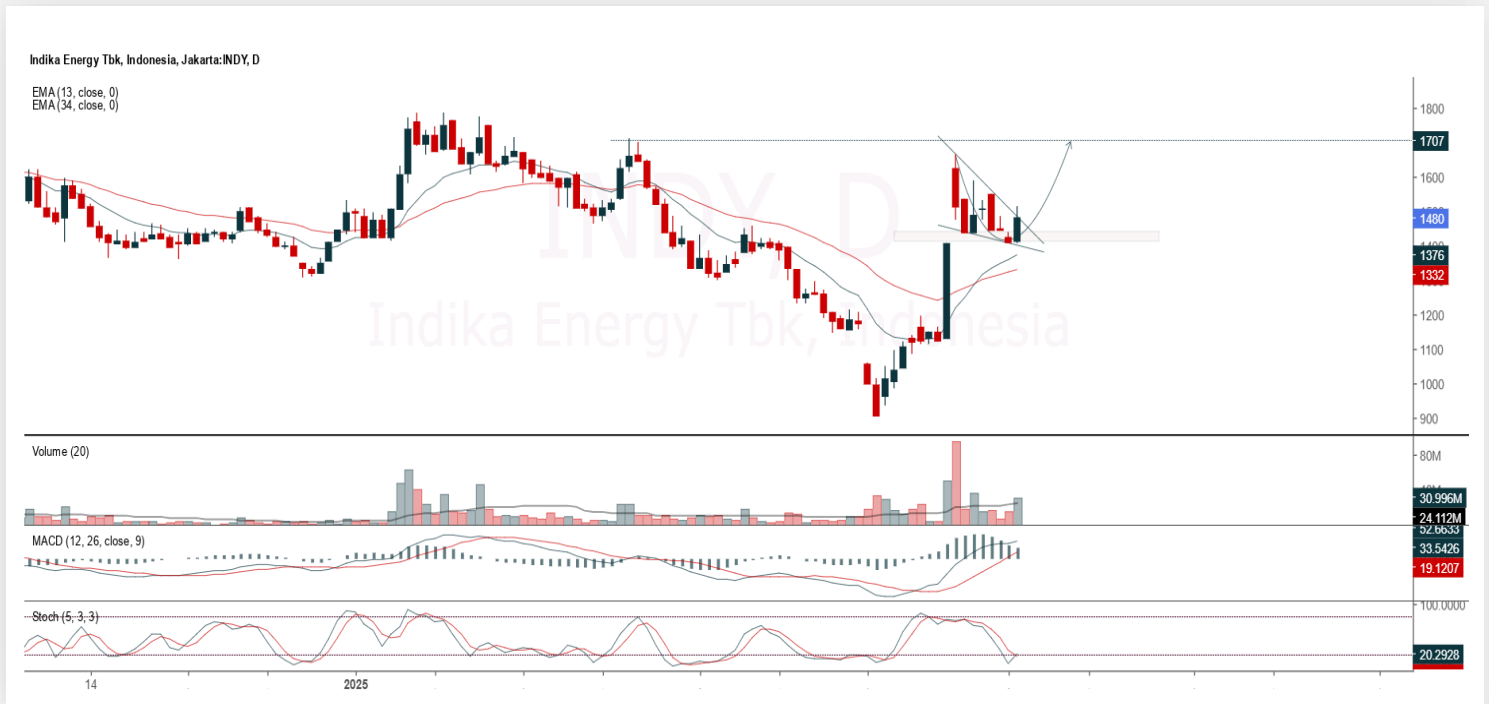
ADVICE: Trading buy or accumulation buy.

Entry Buy	Target Price	Support	Cut Loss
770 – 795	830 – 865	750 – 770	740



INDY

Indika Energy Tbk.



(INDY). Price successfully rebounded after closing a gap area and has the potential to break a bullish flag pattern. The uptrend is supported by a renewed golden cross in the Stochastic, a bullish MACD line with a positive histogram, and increasing volume.

ADVICE: Trading buy or averaging up.

Entry Buy	Target Price	Support	Cut Loss
1,430 – 1,480	1,540 – 1,600	1,405 – 1,430	1,395



SMRA

Summarecon Agung Tbk.



(SMRA). Price has formed a new swing low with potential to continue the uptrend. The uptrend is supported by a potential golden cross in the Stochastic, a bullish MACD line with a positive histogram, and strong enough volume.

ADVICE: Trading buy or averaging up.

Entry Buy	Target Price	Support	Cut Loss
414 – 430	448 – 466	408 – 414	404



Forecast – Technical Analysis

Ticker	MA5	RSI Rec	MACD Trend	Recomm,	Pivot Point	Support 1	2	Resistance 1	2	Stop Loss Level
JCI	Negative	Overbought	Positive	Sell	6,850	6,800	6,800	6,875	6,900	6,700
ACES	Negative	Trading	Positive	Hold	525	515	505	535	545	496
ADMR	Positive	Trading	Negative	Hold	905	890	870	925	940	860
ADRO	Negative	Trading	Positive	Hold	1,875	1,850	1,830	1,895	1,920	1,800
AKRA	Negative	Overbought	Positive	Sell	1,270	1,235	1,220	1,285	1,320	1,200
AMMN	Negative	Overbought	Positive	Sell	7,025	6,925	6,825	7,125	7,225	6,700
AMRT	Negative	Trading	Positive	Hold	2,175	2,080	2,015	2,240	2,335	1,985
ANTM	Negative	Overbought	Positive	Sell	2,305	2,265	2,235	2,335	2,375	2,200
ARTO	Positive	Overbought	Positive	Hold	1,915	1,895	1,875	1,935	1,955	1,850
ASII	Positive	Trading	Negative	Hold	4,790	4,770	4,750	4,810	4,830	4,680
BBCA	Negative	Trading	Positive	Hold	9,000	8,950	8,925	9,025	9,075	8,800
BBNI	Positive	Trading	Positive	Spec. Buy	4,220	4,160	4,120	4,260	4,320	4,060
BBRI	Negative	Trading	Positive	Hold	3,885	3,850	3,825	3,910	3,945	3,770
BBTN	Negative	Overbought	Positive	Sell	1,055	1,040	1,020	1,075	1,090	1,005
BMRI	Negative	Trading	Positive	Hold	5,000	4,915	4,870	5,050	5,150	4,795
BRIS	Negative	Overbought	Positive	Sell	2,870	2,840	2,810	2,900	2,930	2,770
BRPT	Negative	Trading	Positive	Hold	775	745	735	785	815	720
CPIN	Negative	Trading	Positive	Hold	4,710	4,620	4,560	4,770	4,860	4,490
CTRA	Negative	Overbought	Positive	Sell	945	920	905	960	985	890
ESSA	Positive	Trading	Positive	Spec. Buy	605	595	580	620	630	575
EXCL	Negative	Trading	Positive	Hold	2,210	2,185	2,160	2,235	2,260	2,125
GOTO	Positive	Trading	Positive	Spec. Buy	83	82	80	85	86	79
ICBP	Negative	Trading	Positive	Hold	11,150	11,000	10,875	11,275	11,425	10,725
INCO	Positive	Trading	Positive	Spec. Buy	2,505	2,470	2,455	2,520	2,555	2,420
INDF	Negative	Trading	Positive	Hold	7,675	7,600	7,525	7,750	7,825	7,400
INKP	Negative	Overbought	Positive	Sell	5,625	5,375	5,125	5,875	6,125	5,025
ISAT	Negative	Overbought	Positive	Sell	1,915	1,860	1,805	1,970	2,025	1,780
ITMG	Positive	Trading	Negative	Hold	22,000	21,950	21,850	22,100	22,150	21,525
JPFA	Negative	Oversold	Negative	Spec. Buy	1,750	1,730	1,710	1,770	1,790	1,680
JSMR	Positive	Trading	Positive	Spec. Buy	4,280	4,240	4,210	4,310	4,350	4,145
KLBF	Negative	Overbought	Positive	Sell	1,365	1,305	1,265	1,405	1,465	1,245
MAPA	Negative	Trading	Positive	Hold	680	660	645	695	715	635
MAPI	Negative	Trading	Positive	Hold	1,345	1,330	1,315	1,360	1,375	1,295
MBMA	Negative	Overbought	Positive	Sell	332	312	294	350	370	290
MDKA	Negative	Trading	Positive	Hold	1,675	1,650	1,615	1,710	1,735	1,590
MEDC	Positive	Trading	Negative	Hold	1,035	1,025	1,005	1,055	1,065	990
PGAS	Positive	Trading	Negative	Hold	1,640	1,625	1,620	1,645	1,660	1,595
PGEO	Positive	Trading	Positive	Spec. Buy	915	910	895	930	935	885
PTBA	Positive	Trading	Negative	Hold	2,715	2,695	2,665	2,745	2,765	2,625
SIDO	Positive	Trading	Positive	Spec. Buy	545	535	515	565	575	510
SMGR	Positive	Trading	Positive	Spec. Buy	2,550	2,485	2,420	2,615	2,680	2,380
SMRA	Positive	Overbought	Positive	Hold	425	417	411	431	439	404
TLKM	Negative	Overbought	Positive	Sell	2,700	2,685	2,660	2,725	2,740	2,620
TOWR	Negative	Overbought	Positive	Sell	580	575	565	590	595	555
UNTR	Positive	Trading	Positive	Spec. Buy	22,825	22,725	22,650	22,900	23,000	22,325
UNVR	Positive	Overbought	Positive	Hold	1,785	1,715	1,685	1,815	1,885	1,655



Technical Recommendation

Published on 06 May 2025

KIWOOM
SEKURITAS INDONESIA

Kiwoom Research Team



HEAD OFFICE

Treasury Tower 27th Floor Unit A, District 8 Kawasan SCBD Lot 28,
Jl.Jend.Sudirman Kav 52-53, Jakarta Selatan 12190

Tel : (021) 5010 5800
Fax : (021) 5010 5820
Email : cs@kiwoom.co.id

PT Kiwoom Sekuritas Indonesia is licensed and supervised by the Financial Services Authority (OJK)

OTHER DISCLOSURES

All Kiwoom's research reports made available to clients are simultaneously available on our own website <http://www.kiwoom.co.id/>. Not all research content is redistributed, e-mailed or made available to third-party aggregators. For all research reports available on a particular stock, please contact your sales representative. Any data discrepancies in this report could be the result of different calculations and/or adjustments.

DISCLAIMER

This report has been prepared and issued by PT Kiwoom Sekuritas Indonesia. Information has been obtained from sources believed to be reliable but Kiwoom Securities do not warrant its completeness or accuracy. Forward-looking information or statements in this report contain information that is based on forecast of future results, estimates of amounts not yet determinable, assumptions, and therefore involve known and unknown risks and uncertainties which may cause the actual results, performance or achievements of their subject matter to be materially different from current expectations. To the fullest extent allowed by law, PT Kiwoom Sekuritas Indonesia shall not be liable for any direct, indirect or consequential losses, loss of profits, damages, costs or expenses incurred or suffered by any person or organization arising from reliance on or use of any information contained on this report. The information that we provide should not be construed in any manner whatsoever as, personalized advice. No mention of a particular security in this report constitutes a recommendation to buy, sell or hold that or any security, or that any particular security, portfolio of securities, transaction or investment strategy is suitable for any specific person. This report is being supplied to you solely for your information and may not be reproduced by, further distributed to or published in whole or in part by, any other person.