



KSI Research

KIWOOM
SEKURITAS INDONESIA

Technical Recommendation

Jakarta Composite Index Range Today

7,000 / 6,900 – 6,750

Support

7,150 / 7,200 – 7,250

Resistance

Published on 19 May 2025



Jakarta Composite Index

Booked nearly a 1% gain last Friday, up 66.36pts to the 7,106.53 level; posting a 4.01% weekly increase, forming a sort of Hanging Man candle that appeared above the psychological Resistance height of 7,000. The RSI has entered the Overbought territory (70), serving as a reminder that a reversal could occur at any time. **KIWOOM RESEARCH** estimates a reasonable pullback should test the nearest Support: the round number 7,000 up to MA10 / 6,900. However, if bullish momentum continues, considering that foreigners were net buyers last week with IDR 3.65 trillion (a consistent inflow not seen in a while), then JCI may chase a TARGET of 7,200 – 7,250 before entering the second semester.

ADVICE: set your *TRAILING STOP*.



ADMR

Adaro Minerals Indonesia Tbk.



(ADMR). Price breaks out again from the trendline resistance with a potential transition into an uptrend. Strengthening is supported by the stochastic indicator starting a golden cross, MACD line potentially forming a golden cross, and the histogram moving into positive territory, along with a significant increase in volume.

ADVICE: Trading buy or accumulation buy.

Entry Buy	Target Price	Support	Cut Loss
915 – 950	990 – 1,030	900 – 915	890



BMRI

Bank Mandiri (Persero) Tbk.



(BMRI). Price rallies again and is testing the nearest resistance. Strengthening is supported by a bullish stochastic indicator, bullish MACD line, and a positive histogram.

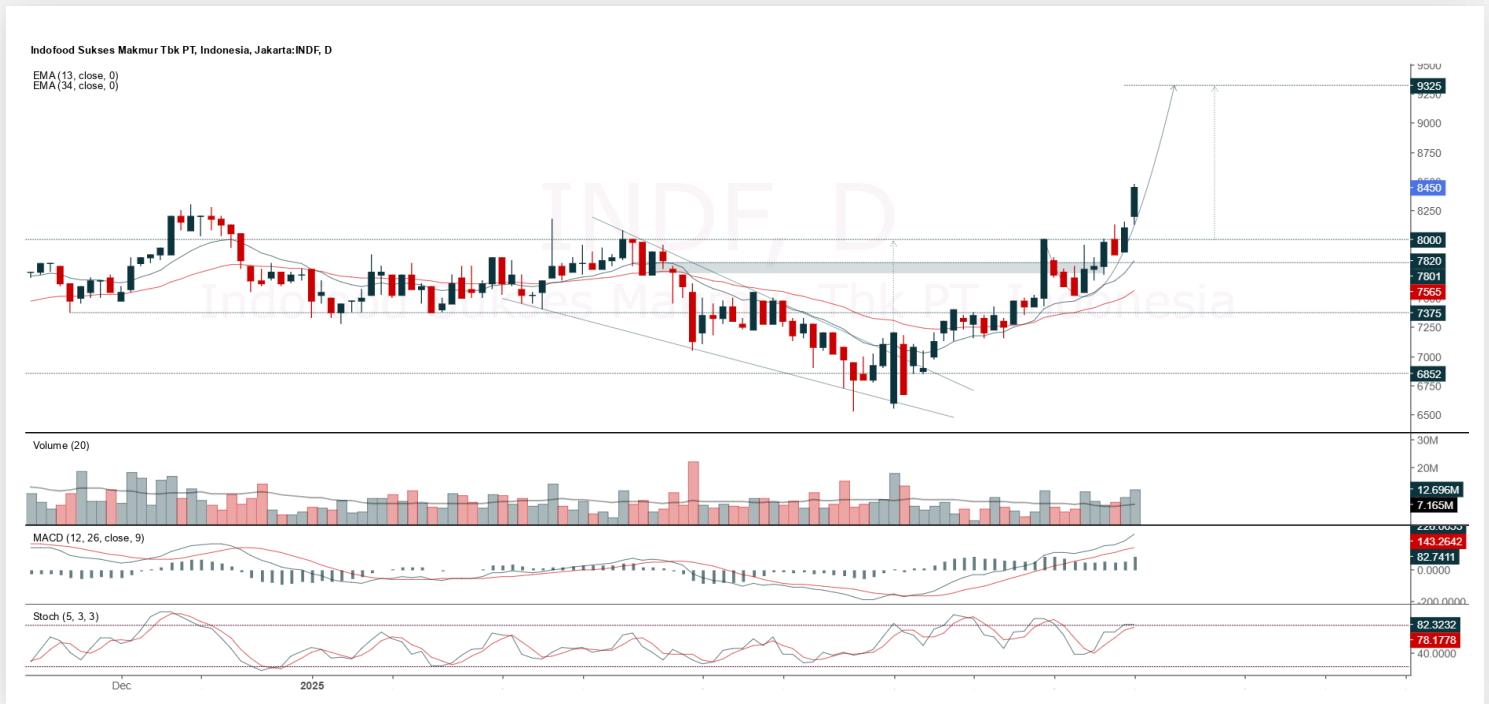
ADVICE: Trading buy or accumulation buy.

Entry Buy	Target Price	Support	Cut Loss
5,300 – 5,475	5,700 – 5,925	5,200 – 5,300	5,150



INDF

Indofood Sukses Makmur Tbk.



(INDF). Price successfully breaks the 8,300 level and still has the potential to continue the uptrend. Strengthening is supported by a bullish stochastic indicator, bullish MACD line, a positive histogram, and an increasing volume trend.

ADVICE: Trading buy or accumulation buy.

Entry Buy	Target Price	Support	Cut Loss
8,150 – 8,450	8,800 – 9,150	8,000 – 8,150	7,950



TLKM

Telkom Indonesia (Persero) Tbk.



(TLKM). Price closed rallying again and is testing the nearest resistance. Strengthening is supported by a bullish stochastic indicator, MACD line in the positive area, and relatively strong volume.

ADVICE: Trading buy or buy on break 2,750.

Entry Buy	Target Price	Support	Cut Loss
2,650 – 2,740	2,850 – 2,960	2,600 – 2,650	2,580



Forecast – Technical Analysis

Ticker	MA5	RSI Rec	MACD Trend	Recomm,	Pivot Point	Support 1	2	Resistance 1	2	Stop Loss Level
JCI	Negative	Overbought	Positive	Sell	7,075	7,050	6,975	7,150	7,175	6,875
ACES	Positive	Trading	Positive	Spec. Buy	520	498	476	545	565	469
ADMR	Negative	Trading	Negative	Sell	930	895	860	965	1,000	845
ADRO	Negative	Overbought	Positive	Sell	2,055	1,910	1,775	2,190	2,335	1,745
AKRA	Positive	Overbought	Positive	Hold	1,270	1,250	1,230	1,290	1,310	1,210
AMMN	Positive	Trading	Negative	Hold	7,075	6,975	6,875	7,175	7,275	6,775
AMRT	Negative	Overbought	Positive	Sell	2,460	2,420	2,370	2,510	2,550	2,335
ANTM	Positive	Overbought	Positive	Hold	2,645	2,615	2,575	2,685	2,715	2,535
ARTO	Negative	Overbought	Positive	Sell	1,950	1,925	1,905	1,970	1,995	1,875
ASII	Positive	Trading	Positive	Spec. Buy	4,855	4,825	4,785	4,895	4,925	4,710
BBCA	Negative	Overbought	Positive	Sell	9,300	9,250	9,200	9,350	9,400	9,050
BBNI	Negative	Overbought	Positive	Sell	4,480	4,430	4,310	4,600	4,650	4,245
BBRI	Negative	Overbought	Positive	Sell	4,265	4,195	4,095	4,365	4,435	4,030
BBTN	Negative	Overbought	Positive	Sell	1,245	1,230	1,205	1,270	1,285	1,185
BMRI	Negative	Overbought	Positive	Sell	5,400	5,325	5,125	5,600	5,675	5,050
BRIS	Positive	Trading	Positive	Spec. Buy	2,895	2,850	2,805	2,940	2,985	2,765
BRPT	Negative	Overbought	Positive	Sell	875	860	850	885	900	835
CPIN	Negative	Overbought	Positive	Sell	4,915	4,890	4,825	4,980	5,000	4,755
CTRA	Negative	Overbought	Positive	Sell	1,015	1,005	985	1,035	1,045	970
ESSA	Positive	Trading	Negative	Hold	580	560	550	590	610	540
EXCL	Positive	Trading	Positive	Spec. Buy	2,170	2,150	2,130	2,190	2,210	2,100
GOTO	Positive	Oversold	Negative	Spec. Buy	74	72	70	76	78	69
ICBP	Negative	Trading	Positive	Hold	11,100	11,000	10,800	11,300	11,400	10,625
INCO	Negative	Overbought	Positive	Sell	2,955	2,825	2,755	3,025	3,155	2,710
INDF	Negative	Overbought	Positive	Sell	8,325	8,150	7,975	8,500	8,675	7,850
INKP	Negative	Overbought	Positive	Sell	5,925	5,825	5,700	6,050	6,150	5,625
ISAT	Positive	Overbought	Positive	Hold	1,985	1,945	1,885	2,045	2,085	1,855
ITMG	Negative	Trading	Positive	Hold	22,600	22,450	22,250	22,800	22,950	21,900
JPFA	Positive	Trading	Positive	Spec. Buy	1,820	1,795	1,760	1,855	1,880	1,735
JSMR	Positive	Trading	Negative	Hold	4,085	4,055	4,035	4,105	4,135	3,970
KLBF	Negative	Overbought	Positive	Sell	1,525	1,495	1,460	1,560	1,590	1,435
MAPA	Positive	Trading	Positive	Spec. Buy	755	735	715	775	795	700
MAPI	Positive	Trading	Negative	Hold	1,330	1,300	1,260	1,370	1,400	1,240
MBMA	Negative	Overbought	Positive	Sell	363	353	347	369	379	341
MDKA	Positive	Overbought	Positive	Hold	1,915	1,870	1,830	1,955	2,000	1,800
MEDC	Negative	Overbought	Positive	Sell	1,135	1,125	1,115	1,145	1,155	1,100
PGAS	Negative	Trading	Negative	Sell	1,680	1,655	1,620	1,715	1,740	1,595
PGEO	Negative	Strong Sell	Positive	Sell	1,205	1,085	990	1,300	1,420	975
PTBA	Negative	Overbought	Positive	Sell	2,825	2,770	2,715	2,880	2,935	2,675
SIDO	Positive	Trading	Negative	Hold	530	530	525	535	535	515
SMGR	Negative	Trading	Negative	Sell	2,555	2,540	2,505	2,590	2,605	2,465
SMRA	Positive	Trading	Positive	Spec. Buy	436	429	424	441	448	417
TLKM	Negative	Overbought	Positive	Sell	2,720	2,690	2,650	2,760	2,790	2,610
TOWR	Negative	Overbought	Positive	Sell	615	600	590	625	640	580
UNTR	Positive	Trading	Negative	Hold	21,850	21,775	21,550	22,075	22,150	21,225
UNVR	Positive	Overbought	Positive	Hold	1,790	1,760	1,725	1,825	1,855	1,700

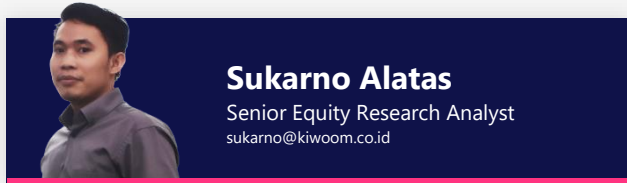


Technical Recommendation

Published on 19 May 2025

KIWOOM
SEKURITAS INDONESIA

Kiwoom Research Team



HEAD OFFICE

Treasury Tower 27th Floor Unit A, District 8 Kawasan SCBD Lot 28,
Jl.Jend.Sudirman Kav 52-53, Jakarta Selatan 12190

Tel : (021) 5010 5800
Fax : (021) 5010 5820
Email : cs@kiwoom.co.id

PT Kiwoom Sekuritas Indonesia is licensed and supervised by the Financial Services Authority (OJK)

OTHER DISCLOSURES

All Kiwoom's research reports made available to clients are simultaneously available on our own website <http://www.kiwoom.co.id/>. Not all research content is redistributed, e-mailed or made available to third-party aggregators. For all research reports available on a particular stock, please contact your sales representative. Any data discrepancies in this report could be the result of different calculations and/or adjustments.

DISCLAIMER

This report has been prepared and issued by PT Kiwoom Sekuritas Indonesia. Information has been obtained from sources believed to be reliable but Kiwoom Securities do not warrant its completeness or accuracy. Forward-looking information or statements in this report contain information that is based on forecast of future results, estimates of amounts not yet determinable, assumptions, and therefore involve known and unknown risks and uncertainties which may cause the actual results, performance or achievements of their subject matter to be materially different from current expectations. To the fullest extent allowed by law, PT Kiwoom Sekuritas Indonesia shall not be liable for any direct, indirect or consequential losses, loss of profits, damages, costs or expenses incurred or suffered by any person or organization arising from reliance on or use of any information contained on this report. The information that we provide should not be construed in any manner whatsoever as, personalized advice. No mention of a particular security in this report constitutes a recommendation to buy, sell or hold that or any security, or that any particular security, portfolio of securities, transaction or investment strategy is suitable for any specific person. This report is being supplied to you solely for your information and may not be reproduced by, further distributed to or published in whole or in part by, any other person.