



KSI Research

KIWOOM
SEKURITAS INDONESIA

Technical Recommendation

Jakarta Composite Index Range Today

7,000 – 6,970 / 6,800 **7,200 – 7,250**
Support Resistance

Published on 21 May 2025



Jakarta Composite Index

JCI formed a candle similar to a Bearish Engulfing, after successfully touching the intraday High level of 7,202.82, also when the RSI entered the Overbought territory. As previously anticipated, a healthy pullback is reasonably occurring in these recent days. In percentage terms, JCI has booked a gain of 3.83% over one weeks. Even if JCI has to consolidate down to the psychological Support of 7,000, it will not disrupt the current short-term uptrend; instead, investors can use this weakening momentum as an opportunity to **BUY ON WEAKNESS**.

ADVICE: set your **TRAILING STOP**.



LSIP

PP London Sumatra Indonesia Tbk.



(LSIP). Price closed breaking short-term trendline. Strengthening is supported by stochastic indicator returning to golden cross, bullish MACD line, and slightly increasing volume.

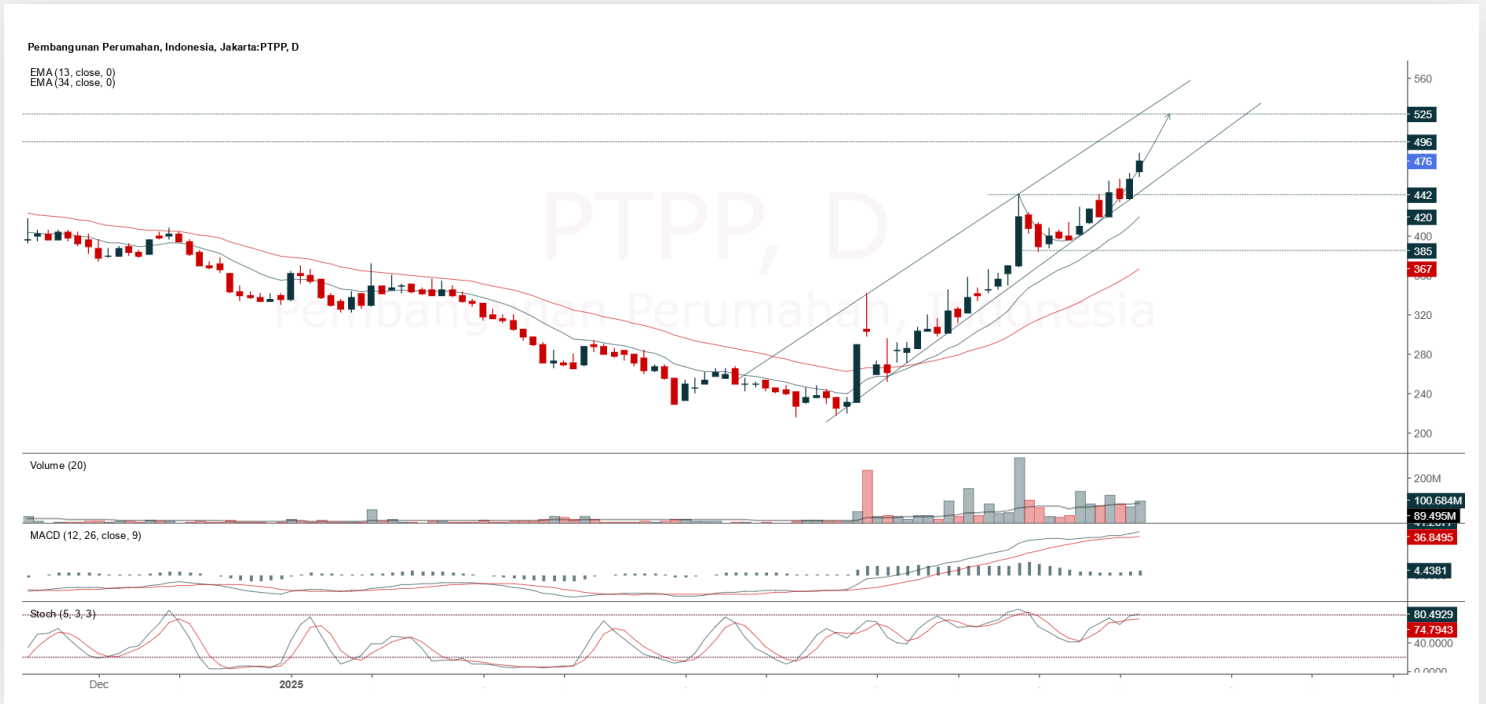
ADVICE: Trading buy or averaging up.

Entry Buy	Target Price	Support	Cut Loss
1,180 – 1,225	1,275 – 1,325	1,160 – 1,180	1,150



PTPP

PP (Persero) Tbk.



(PTPP). Price closed rally again and is still in an uptrend condition. Strengthening is supported by bullish stochastic indicator, bullish MACD line and positive histogram, as well as increasing volume.

ADVICE: Trading buy or averaging up.

Entry Buy	Target Price	Support	Cut Loss
460 – 476	496 – 515	450 – 460	446



TOWR

Sarana Menara Nusantara Tbk.



(TOWR). Price managed to close positively after touching the dynamic support area. Strengthening is supported by MACD line that remains bullish and positive histogram, as well as increasing volume.

ADVICE: Trading buy or averaging up.

Entry Buy	Target Price	Support	Cut Loss
590 – 610	635 – 660	580 – 590	570



TPIA

Chandra Asri Pacific Tbk.



(TPIA). Price closed breaking the nearest resistance. Strengthening is supported by bullish stochastic indicator, bullish MACD line and positive histogram, as well as increasing volume.

ADVICE: Trading buy or averaging up.

Entry Buy	Target Price	Support	Cut Loss
9,250 – 9,575	9,975 – 10,375	9,000 – 9,250	8,950

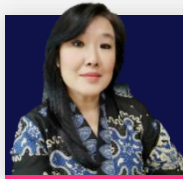


Forecast – Technical Analysis

Ticker	MA5	RSI Rec	MACD Trend	Recomm,	Pivot Point	Support 1	Support 2	Resistance 1	Resistance 2	Stop Loss Level
JCI	Negative	Overbought	Positive	Sell	7,150	7,075	7,025	7,175	7,250	6,925
ACES	Negative	Trading	Positive	Hold	530	515	500	545	560	493
ADMR	Negative	Overbought	Positive	Sell	1,005	980	965	1,020	1,045	950
ADRO	Negative	Overbought	Positive	Sell	2,300	2,170	2,080	2,390	2,520	2,050
AKRA	Negative	Overbought	Positive	Sell	1,275	1,255	1,240	1,290	1,310	1,225
AMMN	Positive	Trading	Negative	Hold	6,775	6,650	6,475	6,950	7,075	6,375
AMRT	Negative	Overbought	Positive	Sell	2,520	2,455	2,420	2,555	2,620	2,380
ANTM	Positive	Overbought	Positive	Hold	2,715	2,685	2,635	2,765	2,795	2,595
ARTO	Negative	Overbought	Positive	Sell	2,060	2,030	1,990	2,100	2,130	1,960
ASII	Negative	Trading	Positive	Hold	4,910	4,860	4,810	4,960	5,000	4,740
BBCA	Negative	Overbought	Positive	Sell	9,525	9,400	9,325	9,600	9,725	9,200
BBNI	Negative	Trading	Positive	Hold	4,475	4,380	4,325	4,530	4,625	4,260
BBRI	Negative	Overbought	Positive	Sell	4,225	4,165	4,115	4,275	4,335	4,050
BBTN	Negative	Overbought	Positive	Sell	1,245	1,205	1,180	1,270	1,310	1,165
BMRI	Negative	Overbought	Positive	Sell	5,450	5,350	5,250	5,550	5,650	5,175
BRIS	Negative	Trading	Negative	Sell	2,900	2,825	2,790	2,935	3,010	2,745
BRPT	Negative	Overbought	Positive	Sell	915	885	855	945	975	845
CPIN	Negative	Trading	Positive	Hold	4,860	4,790	4,750	4,900	4,970	4,680
CTRA	Negative	Overbought	Positive	Sell	1,015	985	950	1,050	1,080	935
ESSA	Negative	Trading	Positive	Hold	635	605	580	660	690	570
EXCL	Negative	Trading	Positive	Hold	2,195	2,170	2,145	2,220	2,245	2,115
GOTO	Positive	Oversold	Negative	Spec. Buy	72	70	69	73	75	67
ICBP	Positive	Trading	Negative	Hold	10,900	10,750	10,575	11,075	11,225	10,425
INCO	Negative	Overbought	Positive	Sell	2,970	2,925	2,890	3,005	3,050	2,845
INDF	Negative	Trading	Positive	Hold	8,075	7,850	7,625	8,300	8,525	7,525
INKP	Negative	Overbought	Positive	Sell	6,225	6,075	5,975	6,325	6,475	5,900
ISAT	Negative	Overbought	Positive	Sell	2,085	2,005	1,925	2,165	2,245	1,895
ITMG	Negative	Trading	Positive	Hold	22,600	22,300	22,000	22,900	23,200	21,675
JPFA	Negative	Trading	Positive	Hold	1,800	1,790	1,770	1,820	1,830	1,745
JSMR	Negative	Trading	Negative	Sell	4,035	3,980	3,945	4,070	4,125	3,885
KLBF	Negative	Overbought	Positive	Sell	1,500	1,465	1,440	1,525	1,560	1,420
MAPA	Positive	Trading	Positive	Spec. Buy	680	660	635	705	725	625
MAPI	Negative	Trading	Negative	Sell	1,310	1,295	1,275	1,330	1,345	1,255
MBMA	Negative	Trading	Positive	Hold	361	351	341	371	381	335
MDKA	Negative	Overbought	Positive	Sell	2,060	1,955	1,865	2,150	2,255	1,840
MEDC	Negative	Trading	Positive	Hold	1,140	1,115	1,085	1,170	1,195	1,070
PGAS	Negative	Overbought	Positive	Sell	1,745	1,715	1,695	1,765	1,795	1,670
PGEO	Negative	Strong Sell	Positive	Sell	1,305	1,210	1,160	1,355	1,450	1,145
PTBA	Negative	Trading	Positive	Hold	2,870	2,805	2,740	2,935	3,000	2,695
SIDO	Negative	Trading	Negative	Sell	530	525	520	535	540	510
SMGR	Negative	Trading	Positive	Hold	2,625	2,510	2,385	2,750	2,865	2,350
SMRA	Positive	Trading	Negative	Hold	438	424	416	446	460	410
TLKM	Negative	Overbought	Positive	Sell	2,790	2,735	2,690	2,835	2,890	2,645
TOWR	Negative	Overbought	Positive	Sell	605	595	585	615	625	575
UNTR	Negative	Trading	Negative	Sell	22,025	21,625	21,300	22,350	22,750	20,975
UNVR	Positive	Trading	Negative	Hold	1,740	1,705	1,665	1,780	1,815	1,640



Kiwoom Research Team



Liza Camelia Suryanata

Head of Equity Research
liza.camelia@kiwoom.co.id



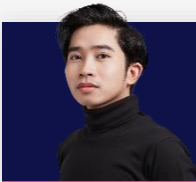
Sukarno Alatas

Senior Equity Research Analyst
sukarno@kiwoom.co.id



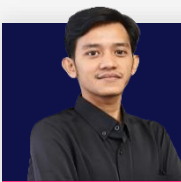
Abdul Azis Setyo W.

Equity Research Analyst
azis@kiwoom.co.id



Miftahul Khaer

Equity Research Analyst
khaer.miftahul@kiwoom.co.id



Wahyu Saputra

Equity Research Associate
wahyu.saputra@kiwoom.co.id



HEAD OFFICE

Treasury Tower 27th Floor Unit A, District 8 Kawasan SCBD Lot 28,
Jl.Jend.Sudirman Kav 52-53, Jakarta Selatan 12190

Tel : (021) 5010 5800
Fax : (021) 5010 5820
Email : cs@kiwoom.co.id

PT Kiwoom Sekuritas Indonesia is licensed and supervised by the Financial Services Authority (OJK)

OTHER DISCLOSURES

All Kiwoom's research reports made available to clients are simultaneously available on our own website <http://www.kiwoom.co.id/>. Not all research content is redistributed, e-mailed or made available to third-party aggregators. For all research reports available on a particular stock, please contact your sales representative. Any data discrepancies in this report could be the result of different calculations and/or adjustments.

DISCLAIMER

This report has been prepared and issued by PT Kiwoom Sekuritas Indonesia. Information has been obtained from sources believed to be reliable but Kiwoom Securities do not warrant its completeness or accuracy. Forward-looking information or statements in this report contain information that is based on forecast of future results, estimates of amounts not yet determinable, assumptions, and therefore involve known and unknown risks and uncertainties which may cause the actual results, performance or achievements of their subject matter to be materially different from current expectations. To the fullest extent allowed by law, PT Kiwoom Sekuritas Indonesia shall not be liable for any direct, indirect or consequential losses, loss of profits, damages, costs or expenses incurred or suffered by any person or organization arising from reliance on or use of any information contained on this report. The information that we provide should not be construed in any manner whatsoever as, personalized advice. No mention of a particular security in this report constitutes a recommendation to buy, sell or hold that or any security, or that any particular security, portfolio of securities, transaction or investment strategy is suitable for any specific person. This report is being supplied to you solely for your information and may not be reproduced by, further distributed to or published in whole or in part by, any other person.