



KSI Research

**KIWOOM**  
SEKURITAS INDONESIA

# Technical Recommendation

Jakarta Composite Index Range Today

**7,130 / 7,025 – 7,000**      **7,190 – 7,240**  
Support                                  Resistance

Published on 23 May 2025



## Jakarta Composite Index

JCI closed up 24 points or 0.34% at the level of 7,166.98, reaching its highest point in the last 3 months. JCI, which is about to reach the medium-term trendline resistance at 7,240, is starting to show signs of a reasonable pullback with the appearance of a Doji candle; also as the RSI enters the Overbought territory. The advice to not forget to apply a TRAILING STOP is most appropriately implemented at this time with the nearest Moving Average Support: 7,025 (up to the round number 7,000 as a psychological level) as a support for the short-term Uptrend.

**ADVICE:** set your TRAILING STOP.



## ACES

Aspirasi Hidup Indonesia Tbk.



**(ACES).** Price successfully broke the 565 resistance and has the potential to transition into an uptrend. Strengthening is supported by a bullish stochastic indicator, bullish MACD line, positive histogram, and significantly increasing volume.

**ADVICE:** Trading buy or if correction occurs (pullback), buy on weakness at the support area.

Entry Buy	Target Price	Support	Cut Loss
575 – 595	620 – 645	565 – 575	555



## BRMS

Bumi Resources Minerals Tbk.



**(BRMS).** Price closed again at the swing low and has the potential to return to the sideways resistance area. Strengthening is supported by a bullish stochastic indicator, a MACD line with a golden cross opportunity, a histogram moving toward positive territory, and significantly increasing volume.

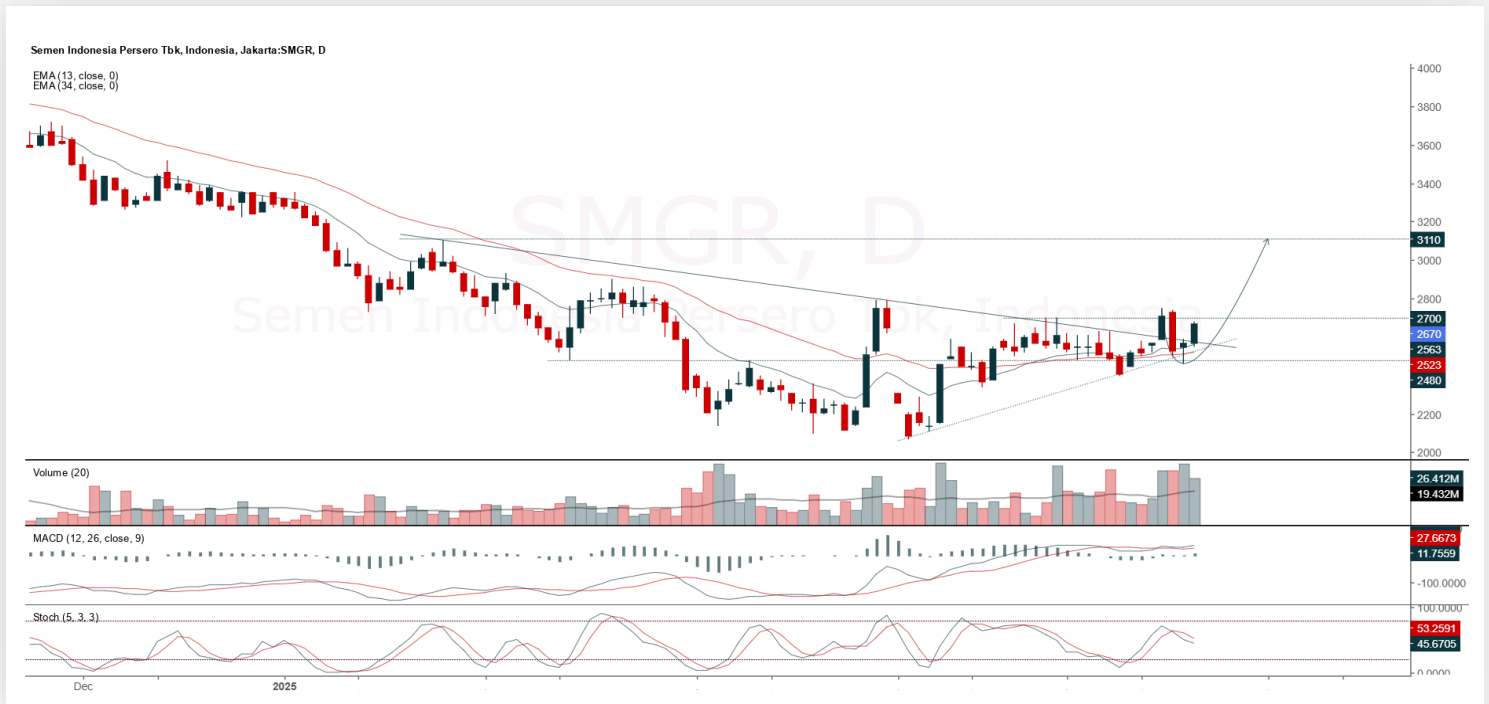
**ADVICE:** Trading buy or accumulation buy.

Entry Buy	Target Price	Support	Cut Loss
368 – 382	398 – 414	360 – 368	356



## SMGR

Semen Indonesia (Persero) Tbk.



**(SMGR).** Price rallied again and has the potential to test the nearest resistance. Strengthening is supported by a bullish MACD line, positive histogram, and increasing volume trend.

**ADVICE:** Accumulation buy and buy on break 2,700.

Entry Buy	Target Price	Support	Cut Loss
2,580 – 2,670	2,790 – 2,900	2,530 – 2,580	2,510



## TINS

Timah Tbk.



**(TINS).** Price closed again at the swing low and has the potential to return to the sideways resistance area. Strengthening is supported by a bullish stochastic indicator and an increasing volume trend.

**ADVICE:** Trading buy or accumulation buy.

Entry Buy	Target Price	Support	Cut Loss
1,150 – 1,190	1,235 – 1,280	1,125 – 1,150	1,115





## Forecast – Technical Analysis

Ticker	MA5	RSI Rec	MACD Trend	Recomm,	Pivot Point	Support 1	2	Resistance 1	2	Stop Loss Level
JCI	Negative	Overbought	Positive	Sell	7,175	7,150	7,100	7,200	7,225	7,000
ACES	Negative	Overbought	Positive	Sell	565	520	479	605	650	472
ADMR	Negative	Overbought	Positive	Sell	1,095	1,065	1,040	1,120	1,150	1,020
ADRO	Negative	Overbought	Positive	Sell	2,155	2,130	2,105	2,180	2,205	2,075
AKRA	Negative	Overbought	Positive	Sell	1,335	1,290	1,200	1,425	1,470	1,180
AMMN	Positive	Trading	Negative	Hold	6,900	6,825	6,750	6,975	7,050	6,625
AMRT	Negative	Overbought	Positive	Sell	2,585	2,560	2,495	2,650	2,675	2,460
ANTM	Negative	Overbought	Positive	Sell	2,990	2,900	2,840	3,050	3,140	2,795
ARTO	Negative	Overbought	Positive	Sell	2,025	2,000	1,960	2,065	2,090	1,930
ASII	Positive	Trading	Negative	Hold	4,665	4,615	4,585	4,695	4,745	4,515
BBCA	Negative	Overbought	Positive	Sell	9,725	9,650	9,575	9,800	9,875	9,425
BBNI	Positive	Trading	Positive	Spec. Buy	4,500	4,460	4,430	4,530	4,570	4,365
BBRI	Positive	Overbought	Positive	Hold	4,285	4,255	4,215	4,325	4,355	4,150
BBTN	Negative	Overbought	Positive	Sell	1,290	1,260	1,245	1,305	1,335	1,225
BMRI	Negative	Overbought	Positive	Sell	5,450	5,400	5,350	5,500	5,550	5,275
BRIS	Negative	Overbought	Negative	Strong Sell	2,930	2,910	2,890	2,950	2,970	2,845
BRPT	Negative	Strong Sell	Positive	Sell	1,035	985	940	1,080	1,130	925
CPIN	Positive	Overbought	Positive	Hold	4,875	4,850	4,805	4,920	4,945	4,735
CTRA	Positive	Trading	Negative	Hold	985	970	945	1,010	1,025	930
ESSA	Negative	Trading	Positive	Hold	630	615	600	645	660	590
EXCL	Negative	Trading	Positive	Hold	2,175	2,150	2,115	2,210	2,235	2,085
GOTO	Positive	Oversold	Negative	Spec. Buy	71	71	69	73	73	68
ICBP	Positive	Trading	Negative	Hold	10,850	10,675	10,575	10,950	11,125	10,400
INCO	Negative	Overbought	Positive	Sell	3,370	3,300	3,240	3,430	3,500	3,190
INDF	Positive	Trading	Positive	Spec. Buy	7,975	7,825	7,725	8,075	8,225	7,625
INKP	Negative	Overbought	Positive	Sell	6,225	6,100	5,975	6,350	6,475	5,875
ISAT	Negative	Overbought	Positive	Sell	2,100	2,070	2,040	2,130	2,160	2,010
ITMG	Negative	Trading	Positive	Hold	22,575	22,500	22,350	22,725	22,800	22,000
JPFA	Positive	Oversold	Positive	Buy	1,740	1,705	1,670	1,775	1,810	1,640
JSMR	Positive	Trading	Negative	Hold	4,035	3,995	3,955	4,075	4,115	3,895
KLBF	Positive	Trading	Positive	Spec. Buy	1,480	1,440	1,395	1,525	1,565	1,375
MAPA	Positive	Trading	Negative	Hold	675	640	600	715	750	590
MAPI	Negative	Trading	Negative	Sell	1,330	1,300	1,275	1,355	1,385	1,255
MBMA	Positive	Trading	Positive	Spec. Buy	354	349	346	357	362	340
MDKA	Negative	Overbought	Positive	Sell	2,060	2,005	1,950	2,115	2,170	1,920
MEDC	Negative	Overbought	Positive	Sell	1,190	1,140	1,085	1,245	1,295	1,070
PGAS	Negative	Overbought	Positive	Sell	1,775	1,735	1,695	1,815	1,855	1,670
PGEO	Negative	Strong Sell	Positive	Sell	1,390	1,360	1,330	1,420	1,450	1,310
PTBA	Negative	Trading	Negative	Sell	2,810	2,785	2,770	2,825	2,850	2,725
SIDO	Negative	Trading	Negative	Sell	540	525	515	550	565	505
SMGR	Negative	Trading	Positive	Hold	2,620	2,555	2,490	2,685	2,750	2,450
SMRA	Negative	Trading	Negative	Sell	445	437	431	451	459	424
TLKM	Negative	Overbought	Positive	Sell	2,790	2,725	2,690	2,825	2,890	2,645
TOWR	Positive	Trading	Positive	Spec. Buy	605	600	590	615	620	580
UNTR	Negative	Trading	Negative	Sell	21,875	21,675	21,525	22,025	22,225	21,200
UNVR	Positive	Overbought	Negative	Sell	1,790	1,730	1,670	1,850	1,910	1,645

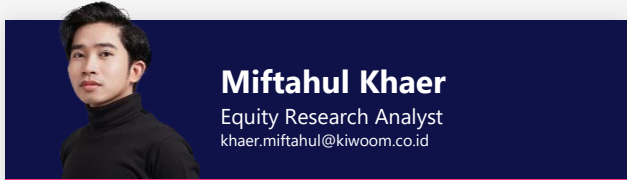
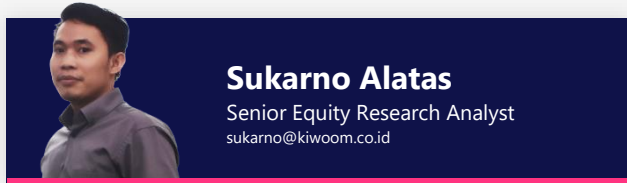


# Technical Recommendation

Published on 23 May 2025

**KIWOOM**  
SEKURITAS INDONESIA

## Kiwoom Research Team



### HEAD OFFICE

Treasury Tower 27th Floor Unit A, District 8 Kawasan SCBD Lot 28,  
Jl.Jend.Sudirman Kav 52-53, Jakarta Selatan 12190

Tel : (021) 5010 5800  
Fax : (021) 5010 5820  
Email : [cs@kiwoom.co.id](mailto:cs@kiwoom.co.id)

PT Kiwoom Sekuritas Indonesia is licensed and supervised by the Financial Services Authority (OJK)

### OTHER DISCLOSURES

All Kiwoom's research reports made available to clients are simultaneously available on our own website <http://www.kiwoom.co.id/>. Not all research content is redistributed, e-mailed or made available to third-party aggregators. For all research reports available on a particular stock, please contact your sales representative. Any data discrepancies in this report could be the result of different calculations and/or adjustments.

### DISCLAIMER

This report has been prepared and issued by PT Kiwoom Sekuritas Indonesia. Information has been obtained from sources believed to be reliable but Kiwoom Securities do not warrant its completeness or accuracy. Forward-looking information or statements in this report contain information that is based on forecast of future results, estimates of amounts not yet determinable, assumptions, and therefore involve known and unknown risks and uncertainties which may cause the actual results, performance or achievements of their subject matter to be materially different from current expectations. To the fullest extent allowed by law, PT Kiwoom Sekuritas Indonesia shall not be liable for any direct, indirect or consequential losses, loss of profits, damages, costs or expenses incurred or suffered by any person or organization arising from reliance on or use of any information contained on this report. The information that we provide should not be construed in any manner whatsoever as, personalized advice. No mention of a particular security in this report constitutes a recommendation to buy, sell or hold that or any security, or that any particular security, portfolio of securities, transaction or investment strategy is suitable for any specific person. This report is being supplied to you solely for your information and may not be reproduced by, further distributed to or published in whole or in part by, any other person.