



KSI Research

**KIWOOM**  
SEKURITAS INDONESIA

# Technical Recommendation

Jakarta Composite Index Range Today

**7,090 / 7,000 – 6,940**      **7,240 / 7,300 – 7,330**  
Support                                      Resistance

Published on 27 May 2025



## Jakarta Composite Index

JCI turned red right after touching the Resistance / Target (medium-term) at the 7,240 level, with a red candle resembling a Hanging Man and RSI ready to plunge from the Overbought area. Further weakening of JCI is reasonably directed to the 7,090 level as MA10 acts as the nearest Support, followed by 7,000 – 6,940 where MA20 is located. **KIWOOM RESEARCH** suggests investors / traders to apply a tight *TRAILING STOP*, if not yet *SELL ON STRENGTH*. Example of TS: if JCI closes below the previous day's Closing level, then start to gradually reduce positions.

***ADVICE:*** *SELL ON STRENGTH; set your TRAILING STOP.*



## INDY

Indika Energy Tbk.



**(INDY).** Price has started to break the minor trendline and is currently testing the 1,525 level. Strengthening is supported by the stochastic indicator moving bullish, MACD line with the potential to golden cross again and histogram heading positive, as well as increasing volume.

**ADVICE:** Trading buy or buy on break 1,525.

Entry Buy	Target Price	Support	Cut Loss
1,455 – 1,505	1,575 – 1,645	1,420 – 1,455	1,410



## PGAS

Perusahaan Gas Negara Tbk.



**(PGAS).** Price has successfully closed back above the 1,795 level with the potential to continue the uptrend. Strengthening is supported by the stochastic indicator moving back into a golden cross, MACD line bullish and positive histogram, as well as increasing volume trend.

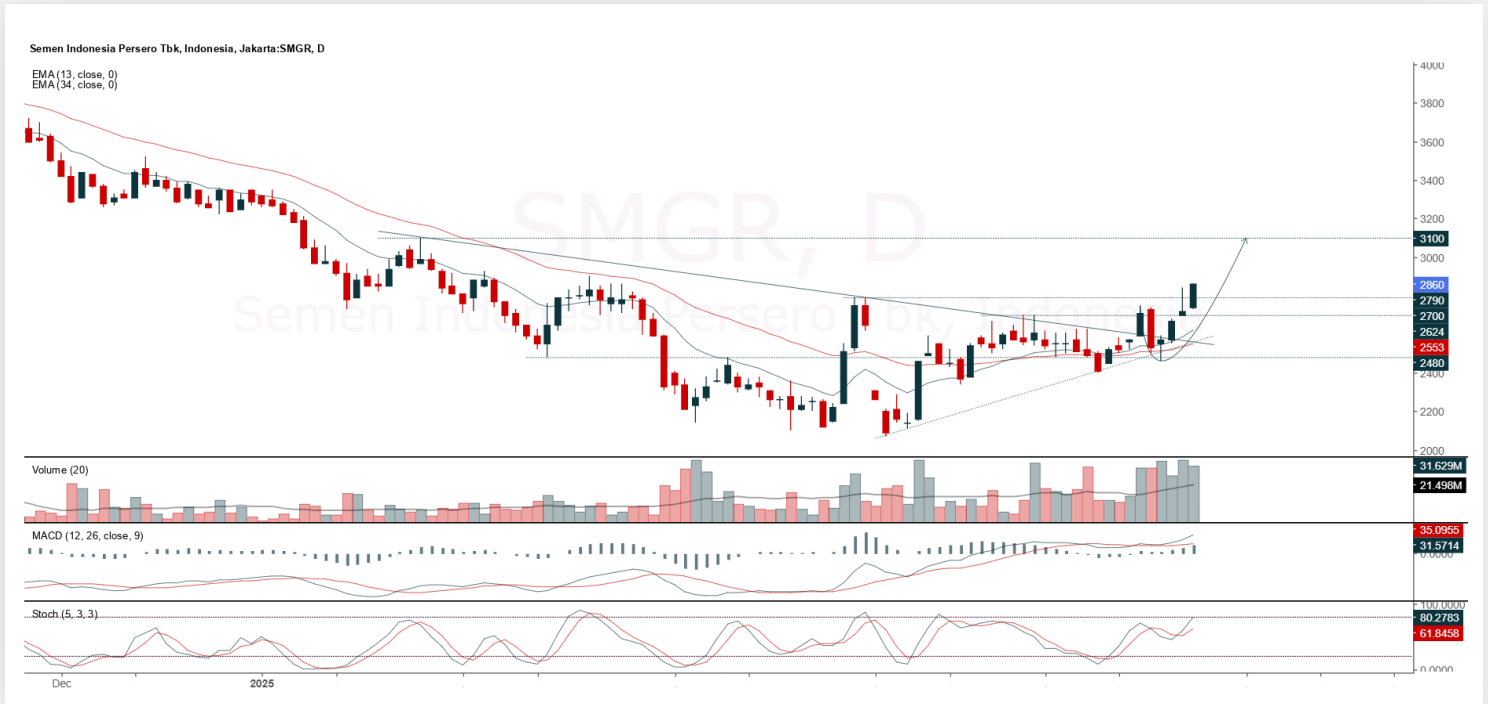
**ADVICE:** Trading buy or averaging up.

Entry Buy	Target Price	Support	Cut Loss
1,750 – 1,815	1,890 – 1,965	1,715 – 1,750	1,705



## SMGR

Semen Indonesia (Persero) Tbk.



**(SMGR).** Price has successfully broken the resistance on the inverted head and shoulder pattern and has the potential to transition into an uptrend. Strengthening is supported by the stochastic indicator moving bullish, MACD line bullish and positive histogram, as well as increasing volume trend.

**ADVICE:** Trading buy or averaging up.

Entry Buy	Target Price	Support	Cut Loss
2,760 – 2,860	2,980 – 3,100	2,700 – 2,760	2,680



## TOBA

TBS Energi Utama Tbk.



**(TOBA).** Price has formed a new swing low and is currently in an uptrend condition. Strengthening is supported by the stochastic indicator with a potential golden cross, MACD line moving bullish and positive histogram, as well as increasing volume.

**ADVICE:** Trading buy or buy on weakness during a pullback (worst-case scenario completing ABC correction pattern).

Entry Buy	Target Price	Support	Cut Loss
450 – 466	486 – 505	442 – 450	438

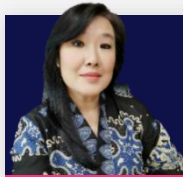


## Forecast – Technical Analysis

Ticker	MA5	RSI Rec	MACD Trend	Recomm,	Pivot Point	Support 1	Support 2	Resistance 1	Resistance 2	Stop Loss Level
JCI	Negative	Overbought	Positive	Sell	7,200	7,150	7,075	7,275	7,300	6,975
ACES	Negative	Trading	Positive	Hold	580	570	555	595	605	545
ADMR	Negative	Overbought	Positive	Sell	1,070	1,055	1,025	1,100	1,115	1,010
ADRO	Positive	Trading	Positive	Spec. Buy	2,115	2,065	2,025	2,155	2,205	1,990
AKRA	Negative	Trading	Positive	Hold	1,300	1,285	1,255	1,330	1,345	1,235
AMMN	Positive	Trading	Negative	Hold	6,875	6,750	6,625	7,000	7,125	6,525
AMRT	Negative	Overbought	Positive	Sell	2,600	2,580	2,560	2,620	2,640	2,520
ANTM	Negative	Overbought	Positive	Sell	3,150	3,015	2,900	3,265	3,400	2,855
ARTO	Positive	Trading	Negative	Hold	1,955	1,875	1,805	2,025	2,105	1,775
ASII	Positive	Trading	Negative	Hold	4,745	4,705	4,655	4,795	4,835	4,585
BBCA	Negative	Overbought	Positive	Sell	9,600	9,550	9,450	9,700	9,750	9,300
BBNI	Negative	Overbought	Positive	Sell	4,490	4,455	4,390	4,555	4,590	4,320
BBRI	Negative	Overbought	Positive	Sell	4,320	4,290	4,230	4,380	4,410	4,165
BBTN	Negative	Overbought	Positive	Sell	1,265	1,255	1,235	1,285	1,295	1,220
BMRI	Positive	Overbought	Positive	Hold	5,425	5,375	5,250	5,550	5,600	5,175
BRIS	Negative	Overbought	Negative	Strong Sell	2,970	2,905	2,880	2,995	3,060	2,835
BRPT	Negative	Strong Sell	Positive	Sell	1,220	1,130	1,075	1,275	1,365	1,060
CPIN	Positive	Trading	Negative	Hold	4,850	4,790	4,710	4,930	4,990	4,640
CTRA	Positive	Overbought	Negative	Sell	980	975	950	1,005	1,010	935
ESSA	Negative	Trading	Positive	Hold	610	605	590	625	630	580
EXCL	Positive	Trading	Positive	Spec. Buy	2,175	2,155	2,145	2,185	2,205	2,110
GOTO	Positive	Oversold	Negative	Spec. Buy	69	66	61	74	77	60
ICBP	Positive	Trading	Negative	Hold	10,925	10,825	10,700	11,050	11,150	10,550
INCO	Negative	Overbought	Positive	Sell	3,610	3,465	3,400	3,675	3,820	3,345
INDF	Positive	Trading	Negative	Hold	7,850	7,825	7,775	7,900	7,925	7,675
INKP	Negative	Overbought	Positive	Sell	6,200	6,150	6,050	6,300	6,350	5,950
ISAT	Positive	Overbought	Positive	Hold	2,110	2,085	2,070	2,125	2,150	2,035
ITMG	Positive	Trading	Positive	Spec. Buy	22,450	22,250	22,050	22,650	22,850	21,725
JPFA	Positive	Oversold	Negative	Spec. Buy	1,640	1,610	1,575	1,675	1,705	1,550
JSMR	Positive	Oversold	Negative	Spec. Buy	3,920	3,815	3,720	4,015	4,120	3,660
KLBF	Negative	Overbought	Negative	Strong Sell	1,500	1,465	1,435	1,530	1,565	1,415
MAPA	Positive	Trading	Negative	Hold	690	665	655	700	725	645
MAPI	Positive	Trading	Negative	Hold	1,325	1,300	1,275	1,350	1,375	1,255
MBMA	Positive	Trading	Positive	Spec. Buy	365	355	351	369	379	345
MDKA	Positive	Overbought	Positive	Hold	2,080	2,030	1,980	2,130	2,180	1,950
MEDC	Negative	Overbought	Positive	Sell	1,240	1,200	1,170	1,270	1,310	1,150
PGAS	Negative	Overbought	Positive	Sell	1,795	1,775	1,745	1,825	1,845	1,720
PGEO	Negative	Overbought	Positive	Sell	1,320	1,295	1,230	1,385	1,410	1,215
PTBA	Positive	Trading	Negative	Hold	2,840	2,820	2,790	2,870	2,890	2,750
SIDO	Negative	Trading	Negative	Sell	535	525	520	540	550	510
SMGR	Positive	Overbought	Positive	Hold	2,800	2,735	2,670	2,865	2,930	2,625
SMRA	Positive	Trading	Negative	Hold	426	416	406	436	446	400
TLKM	Positive	Overbought	Positive	Hold	2,760	2,700	2,640	2,820	2,880	2,600
TOWR	Positive	Trading	Negative	Hold	595	575	565	605	625	555
UNTR	Positive	Trading	Positive	Spec. Buy	21,950	21,650	21,400	22,200	22,500	21,075
UNVR	Negative	Overbought	Negative	Strong Sell	1,780	1,755	1,735	1,800	1,825	1,710



## Kiwoom Research Team



**Liza Camelia Suryanata**

Head of Equity Research  
liza.camelia@kiwoom.co.id



**Sukarno Alatas**

Senior Equity Research Analyst  
sukarno@kiwoom.co.id



**Abdul Azis Setyo W.**

Equity Research Analyst  
azis@kiwoom.co.id



**Miftahul Khaer**

Equity Research Analyst  
khaer.miftahul@kiwoom.co.id



**Wahyu Saputra**

Equity Research Associate  
wahyu.saputra@kiwoom.co.id



### HEAD OFFICE

Treasury Tower 27th Floor Unit A, District 8 Kawasan SCBD Lot 28,  
Jl.Jend.Sudirman Kav 52-53, Jakarta Selatan 12190

Tel : (021) 5010 5800  
Fax : (021) 5010 5820  
Email : [cs@kiwoom.co.id](mailto:cs@kiwoom.co.id)

PT Kiwoom Sekuritas Indonesia is licensed and supervised by the Financial Services Authority (OJK)

### OTHER DISCLOSURES

All Kiwoom's research reports made available to clients are simultaneously available on our own website <http://www.kiwoom.co.id/>. Not all research content is redistributed, e-mailed or made available to third-party aggregators. For all research reports available on a particular stock, please contact your sales representative. Any data discrepancies in this report could be the result of different calculations and/or adjustments.

### DISCLAIMER

This report has been prepared and issued by PT Kiwoom Sekuritas Indonesia. Information has been obtained from sources believed to be reliable but Kiwoom Securities do not warrant its completeness or accuracy. Forward-looking information or statements in this report contain information that is based on forecast of future results, estimates of amounts not yet determinable, assumptions, and therefore involve known and unknown risks and uncertainties which may cause the actual results, performance or achievements of their subject matter to be materially different from current expectations. To the fullest extent allowed by law, PT Kiwoom Sekuritas Indonesia shall not be liable for any direct, indirect or consequential losses, loss of profits, damages, costs or expenses incurred or suffered by any person or organization arising from reliance on or use of any information contained on this report. The information that we provide should not be construed in any manner whatsoever as, personalized advice. No mention of a particular security in this report constitutes a recommendation to buy, sell or hold that or any security, or that any particular security, portfolio of securities, transaction or investment strategy is suitable for any specific person. This report is being supplied to you solely for your information and may not be reproduced by, further distributed to or published in whole or in part by, any other person.