





## LSIP

PP London Sumatra Indonesia Tbk.



**(LSIP).** Price closed stronger and is testing the nearest resistance. Strengthening is supported by the stochastic indicator turning golden cross again, MACD histogram moving towards the positive area, and an increasing volume trend.

**ADVICE:** Trading buy or buy on break 1,245.

Entry Buy	Target Price	Support	Cut Loss
1,200 – 1,240	1,295 – 1,350	1,180 – 1,200	1,170



## MAPA

MAP Aktif Adiperkasa Tbk.



**(MAPA).** Price rallied again and confirmed the transition back to an uptrend. Strengthening is supported by a bullish stochastic indicator, MACD line continuing bullish with a positive histogram, and slightly increasing volume.

**ADVICE:** Trading buy or buy on break 770.

Entry Buy	Target Price	Support	Cut Loss
725 – 750	780 – 810	715 – 725	705



## MDKA

Merdeka Copper Gold Tbk.



**(MDKA).** Price broke out of the bullish flag pattern and has the potential to continue the uptrend. Strengthening is supported by the stochastic indicator turning golden cross again, MACD line continuing bullish with a positive histogram, and increasing volume.

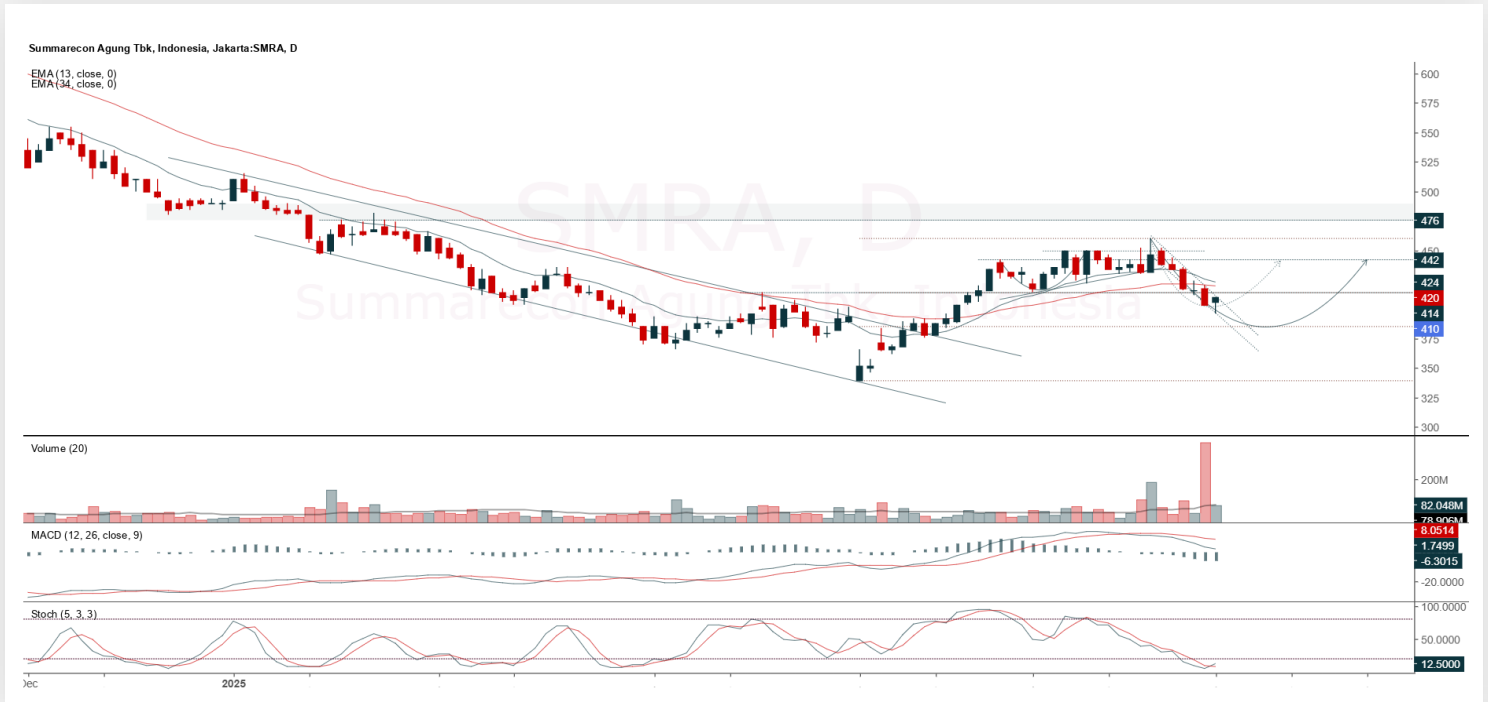
**ADVICE:** Trading buy or buy on break 2,130 – 2,170.

Entry Buy	Target Price	Support	Cut Loss
2,040 – 2,120	2,210 – 2,300	2,000 – 2,040	1,990



## SMRA

Summarecon Agung Tbk.



**(SMRA).** Price closed with a hammer candle as an indication of a reversal signal. Strengthening is supported by the stochastic indicator turning golden cross again and declining volume as an indication that previous selling pressure has eased.

**ADVICE:** Buy on weakness or accumulate buy.

Entry Buy	Target Price	Support	Cut Loss
396 – 410	428 – 446	388 – 396	384



## Forecast – Technical Analysis

Ticker	MA5	RSI Rec	MACD Trend	Recomm,	Pivot Point	Support 1	Support 2	Resistance 1	Resistance 2	Stop Loss Level
JCI	Positive	Trading	Negative	Hold	7,100	7,050	6,975	7,150	7,225	6,875
ACES	Positive	Trading	Positive	Spec. Buy	560	545	525	580	595	515
ADMR	Positive	Overbought	Positive	Hold	1,040	1,010	990	1,060	1,090	975
ADRO	Negative	Trading	Positive	Hold	2,165	2,115	2,065	2,215	2,265	2,030
AKRA	Positive	Trading	Negative	Hold	1,250	1,220	1,175	1,295	1,325	1,155
AMMN	Negative	Trading	Negative	Sell	6,875	6,800	6,625	7,050	7,125	6,525
AMRT	Positive	Trading	Positive	Spec. Buy	2,490	2,410	2,350	2,550	2,630	2,315
ANTM	Negative	Overbought	Positive	Sell	3,245	3,160	3,075	3,330	3,415	3,030
ARTO	Positive	Trading	Negative	Hold	1,845	1,795	1,765	1,875	1,925	1,735
ASII	Negative	Trading	Negative	Sell	4,775	4,745	4,705	4,815	4,845	4,630
BBCA	Positive	Trading	Negative	Hold	9,075	9,000	8,925	9,150	9,225	8,800
BBNI	Positive	Trading	Positive	Spec. Buy	4,410	4,335	4,230	4,515	4,590	4,165
BBRI	Negative	Trading	Positive	Hold	4,290	4,185	4,100	4,375	4,480	4,035
BBTN	Positive	Trading	Negative	Hold	1,230	1,195	1,165	1,260	1,295	1,145
BMRI	Positive	Trading	Negative	Hold	5,150	5,025	4,915	5,250	5,375	4,840
BRIS	Positive	Trading	Negative	Hold	2,895	2,785	2,675	3,005	3,115	2,630
BRPT	Negative	Overbought	Positive	Sell	1,250	1,220	1,165	1,305	1,335	1,150
CPIN	Positive	Overbought	Negative	Sell	4,895	4,785	4,735	4,945	5,050	4,660
CTRA	Negative	Trading	Negative	Sell	980	960	945	995	1,015	930
ESSA	Positive	Trading	Negative	Hold	580	575	560	595	600	550
EXCL	Negative	Trading	Positive	Hold	2,180	2,160	2,130	2,210	2,230	2,100
GOTO	Positive	Oversold	Negative	Spec. Buy	64	62	59	67	69	58
ICBP	Negative	Trading	Negative	Sell	10,775	10,650	10,425	11,000	11,125	10,250
INCO	Negative	Overbought	Positive	Sell	3,510	3,480	3,420	3,570	3,600	3,370
INDF	Positive	Trading	Negative	Hold	7,800	7,650	7,500	7,950	8,100	7,400
INKP	Negative	Overbought	Positive	Sell	6,325	6,225	6,100	6,450	6,550	6,000
ISAT	Negative	Trading	Negative	Sell	2,070	2,030	1,970	2,130	2,170	1,940
ITMG	Positive	Trading	Positive	Spec. Buy	22,350	22,125	21,775	22,700	22,925	21,450
JPFA	Positive	Oversold	Negative	Spec. Buy	1,590	1,575	1,555	1,610	1,625	1,535
JSMR	Positive	Oversold	Negative	Spec. Buy	3,825	3,805	3,775	3,855	3,875	3,715
KLBF	Negative	Overbought	Negative	Strong Sell	1,520	1,475	1,430	1,565	1,610	1,410
MAPA	Negative	Trading	Positive	Hold	735	695	670	760	800	655
MAPI	Positive	Trading	Negative	Hold	1,295	1,265	1,230	1,330	1,360	1,215
MBMA	Negative	Trading	Negative	Sell	361	353	345	369	377	339
MDKA	Negative	Overbought	Positive	Sell	2,065	1,990	1,890	2,165	2,240	1,860
MEDC	Negative	Overbought	Positive	Sell	1,215	1,185	1,135	1,265	1,295	1,120
PGAS	Negative	Overbought	Positive	Sell	1,825	1,810	1,795	1,840	1,855	1,770
PGEO	Positive	Overbought	Positive	Hold	1,325	1,300	1,265	1,360	1,385	1,245
PTBA	Negative	Trading	Positive	Hold	2,875	2,850	2,815	2,910	2,935	2,775
SIDO	Positive	Trading	Negative	Hold	520	515	510	525	530	500
SMGR	Negative	Trading	Positive	Hold	2,785	2,740	2,685	2,840	2,885	2,645
SMRA	Positive	Trading	Negative	Hold	406	401	392	415	420	386
TLKM	Positive	Trading	Positive	Spec. Buy	2,785	2,745	2,715	2,815	2,855	2,670
TOWR	Positive	Trading	Negative	Hold	585	565	545	605	625	535
UNTR	Negative	Trading	Positive	Hold	22,100	21,850	21,550	22,400	22,650	21,225
UNVR	Positive	Trading	Negative	Hold	1,735	1,705	1,680	1,760	1,790	1,655



# Technical Recommendation

Published on 03 June 2025

**KIWOOM**  
SEKURITAS INDONESIA

## Kiwoom Research Team



### HEAD OFFICE

Treasury Tower 27th Floor Unit A, District 8 Kawasan SCBD Lot 28,  
Jl.Jend.Sudirman Kav 52-53, Jakarta Selatan 12190

Tel : (021) 5010 5800

Fax : (021) 5010 5820

Email : [cs@kiwoom.co.id](mailto:cs@kiwoom.co.id)

PT Kiwoom Sekuritas Indonesia is licensed and supervised by the Financial Services Authority (OJK)

### OTHER DISCLOSURES

All Kiwoom's research reports made available to clients are simultaneously available on our own website <http://www.kiwoom.co.id/>. Not all research content is redistributed, e-mailed or made available to third-party aggregators. For all research reports available on a particular stock, please contact your sales representative. Any data discrepancies in this report could be the result of different calculations and/or adjustments.

### DISCLAIMER

This report has been prepared and issued by PT Kiwoom Sekuritas Indonesia. Information has been obtained from sources believed to be reliable but Kiwoom Securities do not warrant its completeness or accuracy. Forward-looking information or statements in this report contain information that is based on forecast of future results, estimates of amounts not yet determinable, assumptions, and therefore involve known and unknown risks and uncertainties which may cause the actual results, performance or achievements of their subject matter to be materially different from current expectations. To the fullest extent allowed by law, PT Kiwoom Sekuritas Indonesia shall not be liable for any direct, indirect or consequential losses, loss of profits, damages, costs or expenses incurred or suffered by any person or organization arising from reliance on or use of any information contained on this report. The information that we provide should not be construed in any manner whatsoever as, personalized advice. No mention of a particular security in this report constitutes a recommendation to buy, sell or hold that or any security, or that any particular security, portfolio of securities, transaction or investment strategy is suitable for any specific person. This report is being supplied to you solely for your information and may not be reproduced by, further distributed to or published in whole or in part by, any other person.