



KSI Research



Technical Recommendation

Jakarta Composite Index Range Today

7,020 – 7,000

Support

7,140 – 7,200

Resistance

Published on 04 June 2025



Jakarta Composite Index

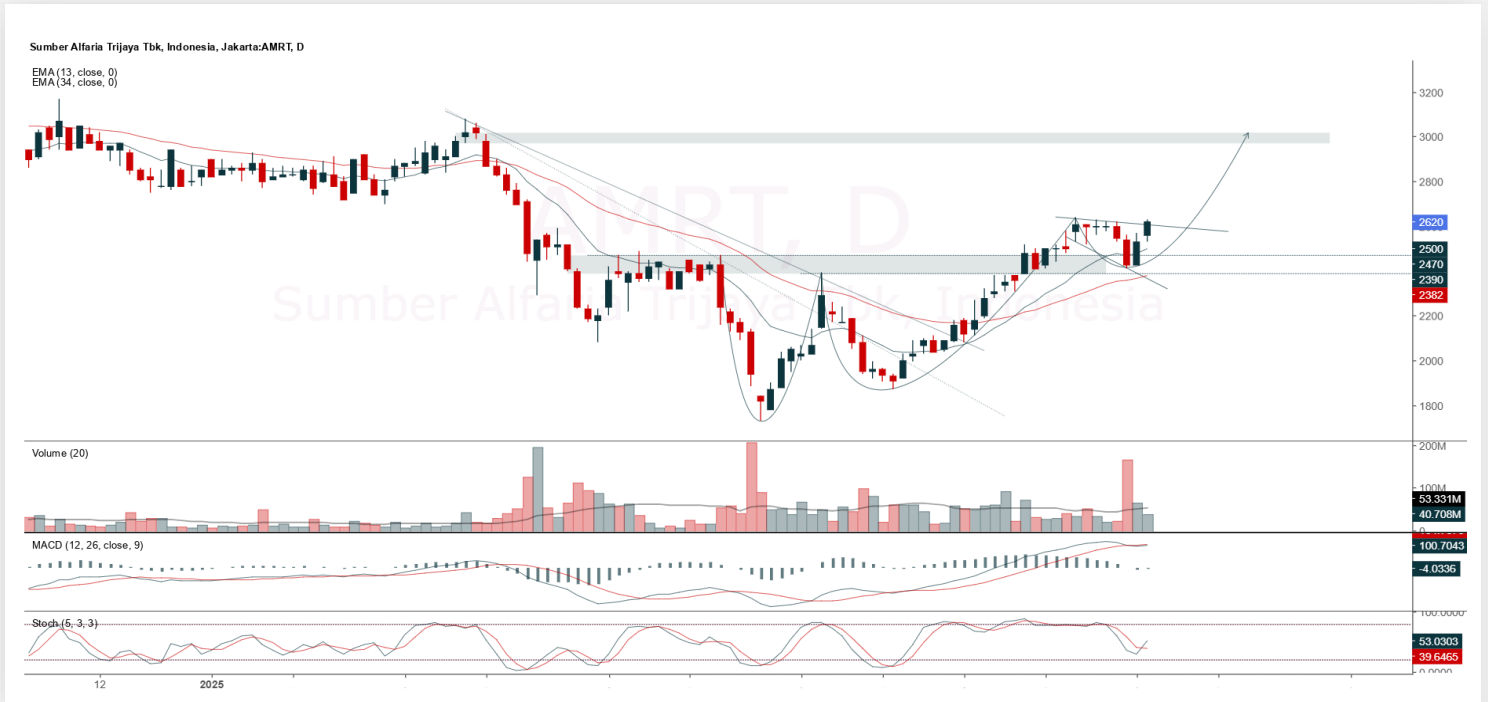
JCI Corrected Again by 20.25pts / -0.29% to the level of 7,044.82, briefly tested the Low point at 6,994; triggered by foreign net sell of IDR 736 billion (ALL market). The fact that JCI is held above the psychological level of 7,000 indicates that this upward trend is not yet over. However, **KIWOOM RESEARCH** again reminds investors/traders to strictly monitor the Trailing Stop level = here you can use MA20 / 7,020 as the second trigger to start reducing positions again, as MA10 as the first trigger was already broken 2 days ago.

ADVICE: set your *TRAILING STOP*, sell more if MA20 breached.



AMRT

Sumber Alfaria Trijaya Tbk.



(AMRT). Price rallied again and has the potential to test the nearest resistance to continue the uptrend. Strengthening is supported by a stochastic golden cross indicator and the MACD line remains bullish.

ADVICE: Trading buy or buy on break 2,640.

Entry Buy	Target Price	Support	Cut Loss
2,530 – 2,620	2,730 – 2,840	2,480 – 2,530	2,460



DSNG

Dharma Satya Nusantara Tbk.



(DSNG). Price rallied again and has the potential to test the nearest resistance to transition into an uptrend. Strengthening is supported by a bullish stochastic indicator, the MACD line remains bullish, the histogram turns positive again, and volume slightly increases.

ADVICE: Trading buy or accumulate buy.

Entry Buy	Target Price	Support	Cut Loss
790 – 820	855 – 890	780 – 790	770



RAJA

Rukun Raharja Tbk.



(RAJA). Price formed a swing low again after touching the trendline support. Strengthening is supported by a bullish MACD line, positive histogram, and increasing volume.

ADVICE: Trading buy or buy on weakness if a correction occurs first.

Entry Buy	Target Price	Support	Cut Loss
2,590 – 2,680	2,800 – 2,920	2,530 – 2,590	2,510



WIFI

Solusi Sinergi Digital Tbk.



(WIFI). Price broke out of a symmetrical triangle pattern and has the potential to continue the uptrend. Strengthening is supported by a bullish stochastic indicator, MACD line golden cross, positive histogram, and significantly increased volume.

ADVICE: Trading buy or accumulate buy.

Entry Buy	Target Price	Support	Cut Loss
2,150 – 2,230	2,330 – 2,430	2,110 – 2,150	2,090



Forecast – Technical Analysis

Ticker	MA5	RSI Rec	MACD Trend	Recomm,	Pivot Point	Support 1	Support 2	Resistance 1	Resistance 2	Stop Loss Level
JCI	Positive	Trading	Negative	Hold	7,050	7,000	6,950	7,100	7,150	6,850
ACES	Positive	Trading	Positive	Spec. Buy	550	540	530	560	570	520
ADMR	Positive	Trading	Positive	Spec. Buy	1,025	1,010	985	1,050	1,065	970
ADRO	Negative	Trading	Positive	Hold	2,130	2,085	2,050	2,165	2,210	2,015
AKRA	Positive	Trading	Negative	Hold	1,250	1,230	1,200	1,280	1,300	1,180
AMMN	Positive	Trading	Negative	Hold	6,950	6,850	6,800	7,000	7,100	6,675
AMRT	Positive	Overbought	Positive	Hold	2,585	2,540	2,485	2,640	2,685	2,450
ANTM	Negative	Strong Sell	Positive	Sell	3,340	3,290	3,210	3,420	3,470	3,160
ARTO	Positive	Oversold	Negative	Spec. Buy	1,800	1,735	1,680	1,855	1,920	1,650
ASII	Negative	Trading	Negative	Sell	4,715	4,670	4,605	4,780	4,825	4,535
BBCA	Positive	Trading	Negative	Hold	9,050	8,975	8,875	9,150	9,225	8,725
BBNI	Positive	Trading	Negative	Hold	4,340	4,300	4,220	4,420	4,460	4,155
BBRI	Positive	Trading	Positive	Spec. Buy	4,190	4,150	4,080	4,260	4,300	4,020
BBTN	Positive	Trading	Negative	Hold	1,195	1,175	1,150	1,220	1,240	1,135
BMRI	Positive	Trading	Negative	Hold	5,050	4,990	4,880	5,175	5,225	4,810
BRIS	Positive	Trading	Negative	Hold	2,795	2,720	2,655	2,860	2,935	2,615
BRPT	Negative	Overbought	Positive	Sell	1,275	1,240	1,205	1,310	1,345	1,185
CPIN	Positive	Trading	Negative	Hold	4,800	4,770	4,730	4,840	4,870	4,660
CTRA	Positive	Trading	Negative	Hold	970	965	945	990	995	930
ESSA	Positive	Oversold	Negative	Spec. Buy	575	565	550	590	600	540
EXCL	Negative	Trading	Positive	Hold	2,165	2,155	2,145	2,175	2,185	2,110
GOTO	Positive	Oversold	Negative	Spec. Buy	62	61	59	64	65	58
ICBP	Negative	Trading	Negative	Sell	10,725	10,600	10,475	10,850	10,975	10,300
INCO	Negative	Overbought	Positive	Sell	3,580	3,520	3,480	3,620	3,680	3,430
INDF	Positive	Trading	Negative	Hold	7,750	7,650	7,525	7,875	7,975	7,425
INKP	Negative	Overbought	Positive	Sell	6,200	6,125	5,975	6,350	6,425	5,875
ISAT	Positive	Trading	Negative	Hold	2,055	2,025	1,985	2,095	2,125	1,955
ITMG	Positive	Trading	Positive	Spec. Buy	22,250	22,150	21,975	22,425	22,525	21,650
JPFA	Positive	Oversold	Negative	Spec. Buy	1,580	1,555	1,530	1,605	1,630	1,510
JSMR	Positive	Oversold	Negative	Spec. Buy	3,810	3,765	3,710	3,865	3,910	3,650
KLBF	Negative	Overbought	Negative	Strong Sell	1,555	1,530	1,500	1,585	1,610	1,480
MAPA	Negative	Trading	Positive	Hold	735	720	700	755	770	690
MAPI	Positive	Trading	Negative	Hold	1,290	1,270	1,245	1,315	1,335	1,225
MBMA	Positive	Trading	Negative	Hold	359	355	349	365	369	343
MDKA	Negative	Overbought	Positive	Sell	2,115	2,060	2,015	2,160	2,215	1,985
MEDC	Negative	Overbought	Positive	Sell	1,255	1,225	1,195	1,285	1,315	1,175
PGAS	Negative	Overbought	Positive	Sell	1,840	1,820	1,785	1,875	1,895	1,760
PGEO	Positive	Overbought	Positive	Hold	1,320	1,280	1,265	1,335	1,375	1,245
PTBA	Negative	Trading	Negative	Sell	2,865	2,845	2,825	2,885	2,905	2,780
SIDO	Positive	Oversold	Negative	Spec. Buy	515	510	505	520	525	497
SMGR	Negative	Overbought	Positive	Sell	2,785	2,730	2,655	2,860	2,915	2,615
SMRA	Positive	Trading	Negative	Hold	407	402	395	414	419	389
TLKM	Negative	Trading	Positive	Hold	2,785	2,740	2,685	2,840	2,885	2,645
TOWR	Positive	Trading	Negative	Hold	560	550	540	570	580	530
UNTR	Positive	Trading	Positive	Spec. Buy	21,675	21,375	21,125	21,925	22,225	20,800
UNVR	Positive	Trading	Negative	Hold	1,715	1,665	1,635	1,745	1,795	1,610



Kiwoom Research Team



Liza Camelia Suryanata

Head of Equity Research
liza.camelia@kiwoom.co.id



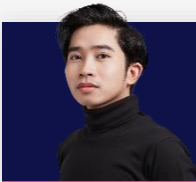
Sukarno Alatas

Senior Equity Research Analyst
sukarno@kiwoom.co.id



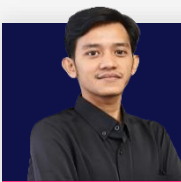
Abdul Azis Setyo W.

Equity Research Analyst
azis@kiwoom.co.id



Miftahul Khaer

Equity Research Analyst
khaer.miftahul@kiwoom.co.id



Wahyu Saputra

Equity Research Associate
wahyu.saputra@kiwoom.co.id



HEAD OFFICE

Treasury Tower 27th Floor Unit A, District 8 Kawasan SCBD Lot 28,
Jl.Jend.Sudirman Kav 52-53, Jakarta Selatan 12190

Tel : (021) 5010 5800
Fax : (021) 5010 5820
Email : cs@kiwoom.co.id

PT Kiwoom Sekuritas Indonesia is licensed and supervised by the Financial Services Authority (OJK)

OTHER DISCLOSURES

All Kiwoom's research reports made available to clients are simultaneously available on our own website <http://www.kiwoom.co.id/>. Not all research content is redistributed, e-mailed or made available to third-party aggregators. For all research reports available on a particular stock, please contact your sales representative. Any data discrepancies in this report could be the result of different calculations and/or adjustments.

DISCLAIMER

This report has been prepared and issued by PT Kiwoom Sekuritas Indonesia. Information has been obtained from sources believed to be reliable but Kiwoom Securities do not warrant its completeness or accuracy. Forward-looking information or statements in this report contain information that is based on forecast of future results, estimates of amounts not yet determinable, assumptions, and therefore involve known and unknown risks and uncertainties which may cause the actual results, performance or achievements of their subject matter to be materially different from current expectations. To the fullest extent allowed by law, PT Kiwoom Sekuritas Indonesia shall not be liable for any direct, indirect or consequential losses, loss of profits, damages, costs or expenses incurred or suffered by any person or organization arising from reliance on or use of any information contained on this report. The information that we provide should not be construed in any manner whatsoever as, personalized advice. No mention of a particular security in this report constitutes a recommendation to buy, sell or hold that or any security, or that any particular security, portfolio of securities, transaction or investment strategy is suitable for any specific person. This report is being supplied to you solely for your information and may not be reproduced by, further distributed to or published in whole or in part by, any other person.