



Technical Recommendation

Jakarta Composite Index Range Today

7,050 – 7,000 **7,140**
Support Resistance

Published on 10 June 2025



Jakarta Composite Index

JCI is about to make a decision to determine its breakout direction, whether it will break through the MA10 Resistance / 7,140; or break the MA20 Support / 7,050 (final tolerance level for Trailing Stop: psychological Support at 7,000). Investors/traders are advised to *WAIT & SEE* before making any further decisions regarding their respective portfolios.

ADVICE: *HOLD; WAIT & SEE.*



AMMN

Amman Mineral Internasional Tbk.



(AMMN). Price successfully broke out of resistance and has the potential to continue the uptrend. Strengthening is supported by a still bullish stochastic indicator and MACD line golden cross (histogram moving positive) as well as a strong volume trend.

ADVICE: Trading buy.

Entry Buy	Target Price	Support	Cut Loss
7,625 – 7,900	8,225 – 8,550	7,475 – 7,625	7,425



BRMS

Bumi Resources Minerals Tbk.



(BRMS). Price is starting to uptrend and has the potential to test the nearest resistance. Strengthening is supported by a stochastic golden cross and MACD line moving bullish (histogram moving positive) as well as increasing volume trend.

ADVICE: Trading buy or buy on break level 424.

Entry Buy	Target Price	Support	Cut Loss
402 – 416	434 – 452	394 – 402	390



SSIA

Surya Semesta Internusa Tbk.



(SSIA). Price successfully broke out of a bullish flag pattern and has the potential to continue the uptrend. Strengthening is supported by a stochastic golden cross and MACD line still bullish (histogram moving positive) as well as increasing volume.

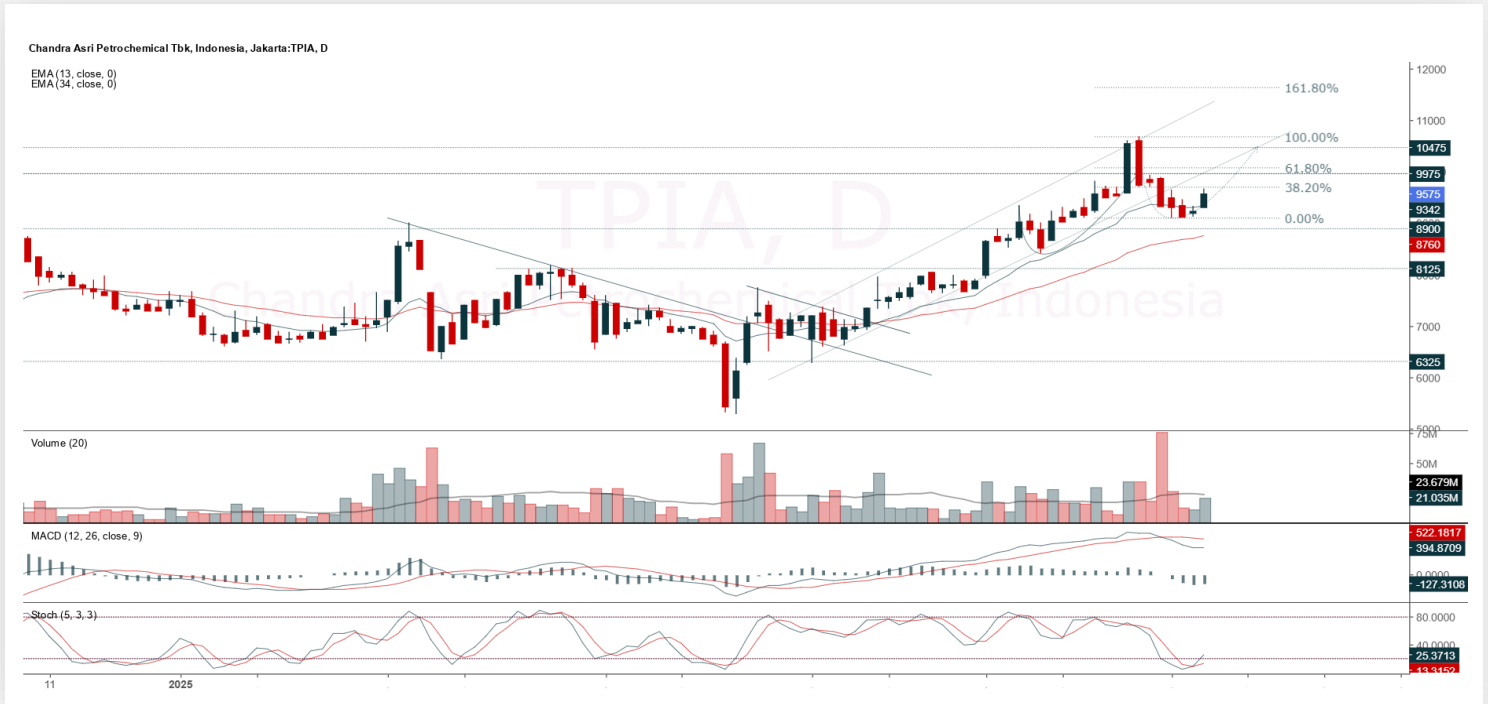
ADVICE: Trading buy or buy on break 1,055.

Entry Buy	Target Price	Support	Cut Loss
1,000 – 1,035	1,080 – 1,125	980 – 1,000	970



TPIA

Chandra Asri Pacific Tbk.



(TPIA). Price formed another swing low and has the potential to strengthen again towards the nearest resistance. Strengthening is supported by a renewed stochastic golden cross and increasing volume.

ADVICE: Trading buy.

Entry Buy	Target Price	Support	Cut Loss
9,250 – 9,575	9,975 – 10,375	9,100 – 9,250	9,050



Forecast – Technical Analysis

Ticker	MA5	RSI Rec	MACD Trend	Recomm,	Pivot Point	Support 1	Support 2	Resistance 1	Resistance 2	Stop Loss Level
JCI	Positive	Overbought	Negative	Sell	7,100	7,075	7,050	7,125	7,150	6,950
ACES	Positive	Trading	Negative	Hold	540	535	525	550	555	520
ADMR	Positive	Trading	Negative	Hold	1,050	1,030	1,005	1,075	1,095	990
ADRO	Positive	Trading	Negative	Hold	2,120	2,095	2,070	2,145	2,170	2,035
AKRA	Positive	Trading	Negative	Hold	1,220	1,205	1,185	1,240	1,255	1,165
AMMN	Negative	Overbought	Positive	Sell	7,675	7,300	6,875	8,100	8,475	6,775
AMRT	Positive	Trading	Negative	Hold	2,555	2,525	2,505	2,575	2,605	2,465
ANTM	Negative	Overbought	Positive	Sell	3,525	3,425	3,335	3,615	3,715	3,285
ARTO	Positive	Oversold	Negative	Spec. Buy	1,675	1,620	1,595	1,700	1,755	1,570
ASII	Positive	Trading	Negative	Hold	4,635	4,595	4,575	4,655	4,695	4,505
BBCA	Positive	Trading	Negative	Hold	8,975	8,900	8,825	9,050	9,125	8,675
BBNI	Positive	Trading	Negative	Hold	4,365	4,310	4,255	4,420	4,475	4,190
BBRI	Positive	Trading	Negative	Hold	4,100	4,060	4,010	4,150	4,190	3,950
BBTN	Positive	Trading	Negative	Hold	1,165	1,145	1,115	1,195	1,215	1,100
BMRI	Positive	Trading	Negative	Hold	5,050	5,025	4,975	5,100	5,125	4,900
BRIS	Positive	Oversold	Negative	Spec. Buy	2,555	2,505	2,415	2,645	2,695	2,375
BRPT	Negative	Strong Sell	Positive	Sell	1,410	1,295	1,180	1,525	1,640	1,165
CPIN	Negative	Trading	Negative	Sell	4,890	4,835	4,760	4,965	5,025	4,685
CTRA	Positive	Overbought	Negative	Sell	975	970	950	995	1,000	935
ESSA	Positive	Trading	Negative	Hold	600	590	580	610	620	570
EXCL	Negative	Trading	Positive	Hold	2,190	2,160	2,140	2,210	2,240	2,110
GOTO	Positive	Oversold	Negative	Spec. Buy	62	61	60	63	64	59
ICBP	Positive	Trading	Negative	Hold	10,725	10,650	10,525	10,850	10,925	10,375
INCO	Negative	Overbought	Positive	Sell	3,795	3,685	3,575	3,905	4,015	3,520
INDF	Negative	Trading	Negative	Sell	8,175	8,100	8,000	8,275	8,350	7,875
INKP	Negative	Overbought	Positive	Sell	6,550	6,425	6,250	6,725	6,850	6,150
ISAT	Positive	Trading	Negative	Hold	2,070	2,045	2,010	2,105	2,130	1,975
ITMG	Positive	Trading	Positive	Spec. Buy	22,275	22,150	22,050	22,375	22,500	21,725
JPFA	Positive	Oversold	Negative	Spec. Buy	1,560	1,525	1,505	1,580	1,615	1,480
JSMR	Positive	Oversold	Negative	Spec. Buy	3,760	3,710	3,670	3,800	3,850	3,615
KLBF	Negative	Overbought	Positive	Sell	1,585	1,570	1,530	1,625	1,640	1,505
MAPA	Positive	Trading	Positive	Spec. Buy	710	695	680	725	740	665
MAPI	Positive	Trading	Negative	Hold	1,265	1,250	1,225	1,290	1,305	1,205
MBMA	Negative	Overbought	Positive	Sell	477	419	384	510	570	378
MDKA	Negative	Overbought	Positive	Sell	2,220	2,145	2,080	2,285	2,360	2,045
MEDC	Positive	Overbought	Positive	Hold	1,245	1,230	1,210	1,265	1,280	1,190
PGAS	Negative	Overbought	Positive	Sell	1,840	1,825	1,810	1,855	1,870	1,780
PGEO	Positive	Overbought	Negative	Sell	1,325	1,300	1,275	1,350	1,375	1,255
PTBA	Negative	Overbought	Negative	Strong Sell	2,865	2,835	2,815	2,885	2,915	2,770
SIDO	Positive	Trading	Negative	Hold	515	515	510	520	520	500
SMGR	Positive	Trading	Positive	Spec. Buy	2,730	2,680	2,650	2,760	2,810	2,610
SMRA	Positive	Trading	Negative	Hold	410	405	402	413	418	395
TLKM	Positive	Overbought	Positive	Hold	2,840	2,830	2,810	2,860	2,870	2,770
TOWR	Positive	Oversold	Negative	Spec. Buy	540	530	520	550	560	510
UNTR	Positive	Trading	Negative	Hold	21,500	21,375	21,275	21,600	21,725	20,950
UNVR	Positive	Trading	Negative	Hold	1,635	1,615	1,585	1,665	1,685	1,560



Kiwoom Research Team



HEAD OFFICE

Treasury Tower 27th Floor Unit A, District 8 Kawasan SCBD Lot 28,
Jl.Jend.Sudirman Kav 52-53, Jakarta Selatan 12190

Tel : (021) 5010 5800
Fax : (021) 5010 5820
Email : cs@kiwoom.co.id

PT Kiwoom Sekuritas Indonesia is licensed and supervised by the Financial Services Authority (OJK)

OTHER DISCLOSURES

All Kiwoom's research reports made available to clients are simultaneously available on our own website <http://www.kiwoom.co.id/>. Not all research content is redistributed, e-mailed or made available to third-party aggregators. For all research reports available on a particular stock, please contact your sales representative. Any data discrepancies in this report could be the result of different calculations and/or adjustments.

DISCLAIMER

This report has been prepared and issued by PT Kiwoom Sekuritas Indonesia. Information has been obtained from sources believed to be reliable but Kiwoom Securities do not warrant its completeness or accuracy. Forward-looking information or statements in this report contain information that is based on forecast of future results, estimates of amounts not yet determinable, assumptions, and therefore involve known and unknown risks and uncertainties which may cause the actual results, performance or achievements of their subject matter to be materially different from current expectations. To the fullest extent allowed by law, PT Kiwoom Sekuritas Indonesia shall not be liable for any direct, indirect or consequential losses, loss of profits, damages, costs or expenses incurred or suffered by any person or organization arising from reliance on or use of any information contained on this report. The information that we provide should not be construed in any manner whatsoever as, personalized advice. No mention of a particular security in this report constitutes a recommendation to buy, sell or hold that or any security, or that any particular security, portfolio of securities, transaction or investment strategy is suitable for any specific person. This report is being supplied to you solely for your information and may not be reproduced by, further distributed to or published in whole or in part by, any other person.