



KSI Research

KIWOOM
SEKURITAS INDONESIA

Technical Recommendation

Jakarta Composite Index Range Today

7,140 – 7,070

Support

7,240 – 7,320

Resistance

Published on 11 June 2025



Jakarta Composite Index

JCI decided to break the MA10 Resistance and closed Tuesday's trading with a surge of 117.32pts / +1.65% to the level of 7,230.75, just one step away from reaching the previous High of 7,240. There is a slight suspicion of a trend reversal ahead based on the RSI position (negative divergence), but that can only be confirmed if JCI breaks the first Support level down to 7,140 again. Although Sell on Strength (partial) is not wrong to do, it is actually not yet urgent for massive profit-taking as yesterday's increase was supported by a Foreign Net Buy of IDR 1.03 trillion (all market). Rupiah exchange rate remains stable at around 16,270 / USD. **KIWOOM RESEARCH** still recommends to *HOLD*, don't forget to set your *TRAILING STOP*; with the addition of MA20 / 7,070 as the second Support level to start gradually liquidating the portfolio.

ADVICE: *HOLD*; set your *TRAILING STOP*.



BBRI

Bank Rakyat Indonesia (Persero) Tbk.



(BBRI). Price is starting to form a swing low after touching the classic support. Strengthening is supported by the stochastic indicator being in the oversold area and a potential golden cross.

ADVICE: Trading buy and accumulation buy.

Entry Buy	Target Price	Support	Cut Loss
4,000 – 4,150	4,330 – 4,510	3,930 – 4,000	3,910



EMTK

Elang Mahkota Teknologi Tbk.



(EMTK). Price is rallying again with the potential to test resistance. Strengthening is supported by the stochastic indicator showing a golden cross again, MACD line golden cross (histogram moving positively), and increasing volume.

ADVICE: Trading buy or buy on break 585.

Entry Buy	Target Price	Support	Cut Loss
560 – 580	605 – 630	550 – 560	540



JSMR

Jasa Marga (Persero) Tbk.



(JSMR). Price is starting to form a swing low and a price pattern – stochastic forming a bullish divergence. Strengthening is supported by the bullish stochastic indicator and the MACD line's potential golden cross (histogram moving in a positive direction) along with significantly increasing volume.

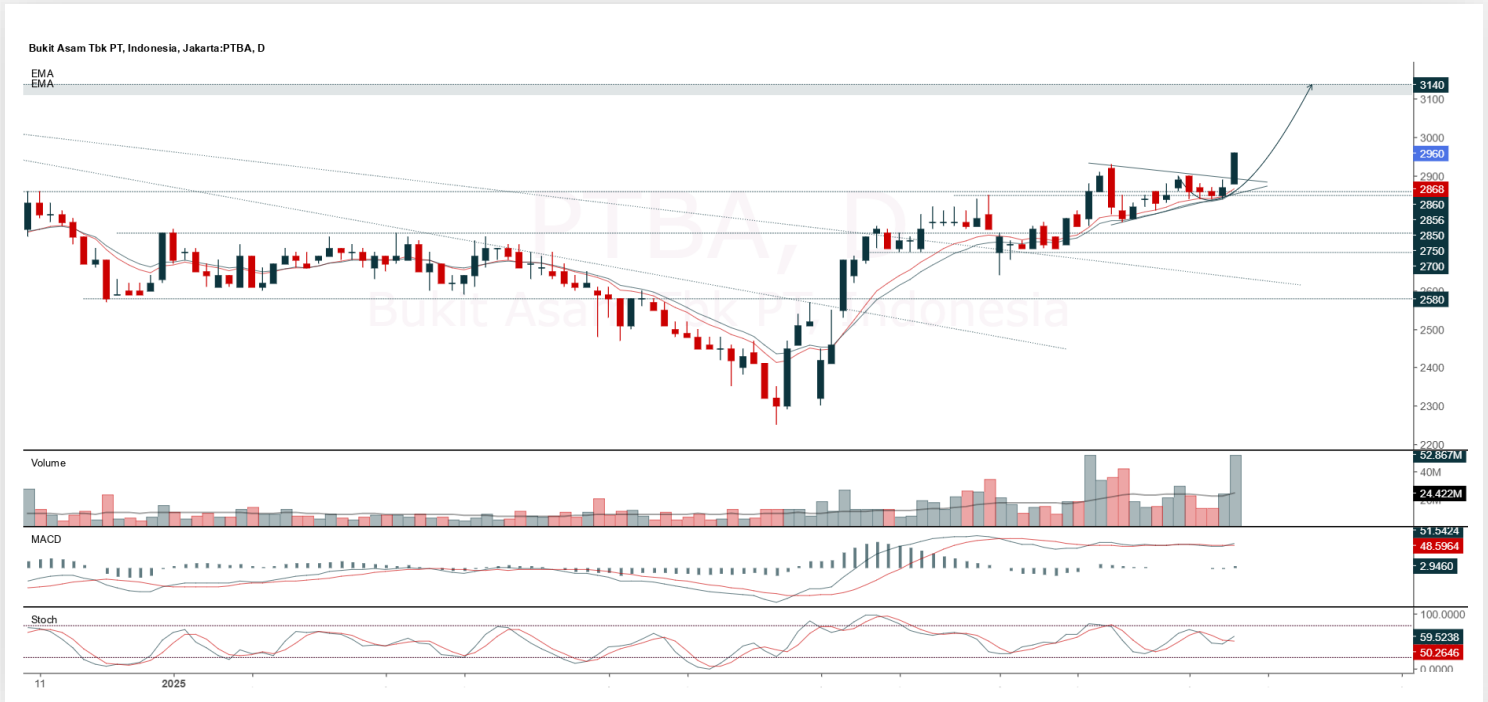
ADVICE: Trading buy and accumulation buy.

Entry Buy	Target Price	Support	Cut Loss
3,690 – 3,820	3,980 – 4,140	3,630 – 3,690	3,610



PTBA

Bukit Asam Tbk.



(PTBA). Price has successfully broken out of resistance and has the potential to continue the uptrend. Strengthening is supported by the stochastic indicator showing a golden cross again, MACD line golden cross (histogram moving positively again), and increasing volume.

ADVICE: Trading buy.

Entry Buy	Target Price	Support	Cut Loss
2,860 – 2,960	3,080 – 3,200	2,800 – 2,860	2,780

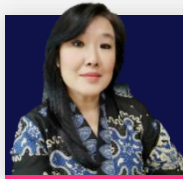


Forecast – Technical Analysis

Ticker	MA5	RSI Rec	MACD Trend	Recomm,	Pivot Point	Support 1	Support 2	Resistance 1	Resistance 2	Stop Loss Level
JCI	Positive	Overbought	Negative	Sell	7,175	7,125	7,075	7,225	7,275	6,975
ACES	Positive	Trading	Negative	Hold	540	535	525	550	555	520
ADMR	Positive	Trading	Negative	Hold	1,020	1,005	990	1,035	1,050	975
ADRO	Positive	Trading	Negative	Hold	2,115	2,085	2,055	2,145	2,175	2,020
AKRA	Positive	Trading	Negative	Hold	1,220	1,190	1,165	1,245	1,275	1,150
AMMN	Negative	Overbought	Positive	Sell	7,925	7,775	7,625	8,075	8,225	7,500
AMRT	Negative	Trading	Negative	Sell	2,525	2,495	2,465	2,555	2,585	2,425
ANTM	Negative	Overbought	Positive	Sell	3,315	3,210	3,125	3,400	3,505	3,080
ARTO	Positive	Trading	Negative	Hold	1,735	1,655	1,595	1,795	1,875	1,570
ASII	Positive	Trading	Negative	Hold	4,635	4,600	4,565	4,670	4,705	4,495
BBCA	Positive	Trading	Negative	Hold	9,025	8,975	8,875	9,125	9,175	8,750
BBNI	Positive	Trading	Negative	Hold	4,490	4,460	4,420	4,530	4,560	4,355
BBRI	Positive	Trading	Negative	Hold	4,130	4,095	4,070	4,155	4,190	4,005
BBTN	Positive	Trading	Negative	Hold	1,175	1,145	1,125	1,195	1,225	1,105
BMRI	Positive	Trading	Negative	Hold	5,175	5,075	4,990	5,250	5,350	4,915
BRIS	Positive	Oversold	Negative	Spec. Buy	2,580	2,525	2,480	2,625	2,680	2,440
BRPT	Negative	Strong Sell	Positive	Sell	1,540	1,465	1,430	1,575	1,650	1,405
CPIN	Negative	Trading	Negative	Sell	4,835	4,790	4,725	4,900	4,945	4,655
CTRA	Positive	Overbought	Negative	Sell	995	975	965	1,005	1,025	950
ESSA	Positive	Trading	Negative	Hold	590	580	570	600	610	560
EXCL	Positive	Trading	Positive	Spec. Buy	2,190	2,170	2,150	2,210	2,230	2,120
GOTO	Positive	Oversold	Negative	Spec. Buy	64	62	59	67	69	58
ICBP	Positive	Trading	Negative	Hold	10,650	10,550	10,400	10,800	10,900	10,250
INCO	Negative	Overbought	Positive	Sell	3,585	3,440	3,255	3,770	3,915	3,205
INDF	Negative	Trading	Positive	Hold	8,175	8,125	8,050	8,250	8,300	7,925
INKP	Negative	Overbought	Positive	Sell	6,500	6,350	6,250	6,600	6,750	6,150
ISAT	Positive	Overbought	Negative	Sell	2,100	2,070	2,050	2,120	2,150	2,020
ITMG	Positive	Trading	Positive	Spec. Buy	22,325	22,175	22,025	22,475	22,625	21,675
JPFA	Positive	Oversold	Negative	Spec. Buy	1,585	1,555	1,535	1,605	1,635	1,510
JSMR	Positive	Trading	Negative	Hold	3,805	3,735	3,695	3,845	3,915	3,635
KLBF	Negative	Overbought	Negative	Strong Sell	1,580	1,565	1,535	1,610	1,625	1,510
MAPA	Negative	Trading	Negative	Sell	690	680	660	710	720	650
MAPI	Positive	Trading	Negative	Hold	1,270	1,250	1,230	1,290	1,310	1,210
MBMA	Negative	Overbought	Positive	Sell	436	404	380	460	492	374
MDKA	Negative	Overbought	Positive	Sell	2,145	2,100	2,045	2,200	2,245	2,015
MEDC	Negative	Overbought	Positive	Sell	1,275	1,235	1,210	1,300	1,340	1,190
PGAS	Negative	Overbought	Positive	Sell	1,865	1,835	1,810	1,890	1,920	1,780
PGEO	Positive	Overbought	Negative	Sell	1,375	1,315	1,295	1,395	1,455	1,275
PTBA	Negative	Overbought	Positive	Sell	2,915	2,870	2,825	2,960	3,005	2,785
SIDO	Positive	Trading	Negative	Hold	515	510	505	520	525	497
SMGR	Negative	Overbought	Positive	Sell	2,830	2,705	2,620	2,915	3,040	2,580
SMRA	Negative	Trading	Negative	Sell	416	407	400	423	432	394
TLKM	Negative	Overbought	Positive	Sell	2,910	2,895	2,870	2,935	2,950	2,825
TOWR	Positive	Oversold	Negative	Spec. Buy	530	520	510	540	550	500
UNTR	Positive	Trading	Negative	Hold	21,550	21,450	21,300	21,700	21,800	20,975
UNVR	Positive	Trading	Negative	Hold	1,630	1,595	1,575	1,650	1,685	1,550



Kiwoom Research Team



Liza Camelia Suryanata

Head of Equity Research
liza.camelia@kiwoom.co.id



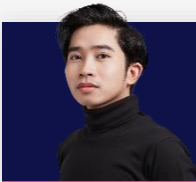
Sukarno Alatas

Senior Equity Research Analyst
sukarno@kiwoom.co.id



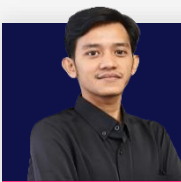
Abdul Azis Setyo W.

Equity Research Analyst
azis@kiwoom.co.id



Miftahul Khaer

Equity Research Analyst
khaer.miftahul@kiwoom.co.id



Wahyu Saputra

Equity Research Associate
wahyu.saputra@kiwoom.co.id



HEAD OFFICE

Treasury Tower 27th Floor Unit A, District 8 Kawasan SCBD Lot 28,
Jl.Jend.Sudirman Kav 52-53, Jakarta Selatan 12190

Tel : (021) 5010 5800
Fax : (021) 5010 5820
Email : cs@kiwoom.co.id

PT Kiwoom Sekuritas Indonesia is licensed and supervised by the Financial Services Authority (OJK)

OTHER DISCLOSURES

All Kiwoom's research reports made available to clients are simultaneously available on our own website <http://www.kiwoom.co.id/>. Not all research content is redistributed, e-mailed or made available to third-party aggregators. For all research reports available on a particular stock, please contact your sales representative. Any data discrepancies in this report could be the result of different calculations and/or adjustments.

DISCLAIMER

This report has been prepared and issued by PT Kiwoom Sekuritas Indonesia. Information has been obtained from sources believed to be reliable but Kiwoom Securities do not warrant its completeness or accuracy. Forward-looking information or statements in this report contain information that is based on forecast of future results, estimates of amounts not yet determinable, assumptions, and therefore involve known and unknown risks and uncertainties which may cause the actual results, performance or achievements of their subject matter to be materially different from current expectations. To the fullest extent allowed by law, PT Kiwoom Sekuritas Indonesia shall not be liable for any direct, indirect or consequential losses, loss of profits, damages, costs or expenses incurred or suffered by any person or organization arising from reliance on or use of any information contained on this report. The information that we provide should not be construed in any manner whatsoever as, personalized advice. No mention of a particular security in this report constitutes a recommendation to buy, sell or hold that or any security, or that any particular security, portfolio of securities, transaction or investment strategy is suitable for any specific person. This report is being supplied to you solely for your information and may not be reproduced by, further distributed to or published in whole or in part by, any other person.